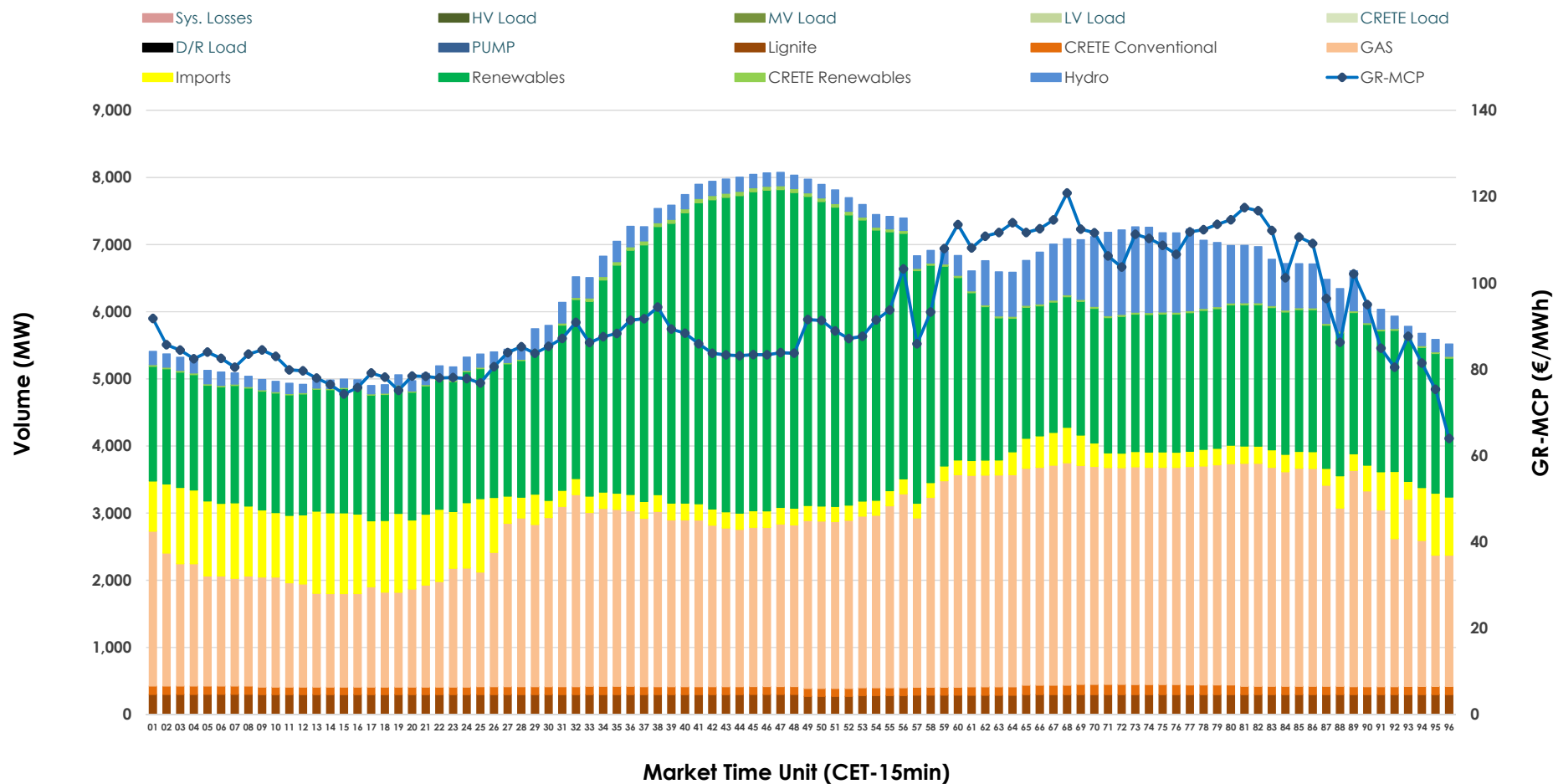


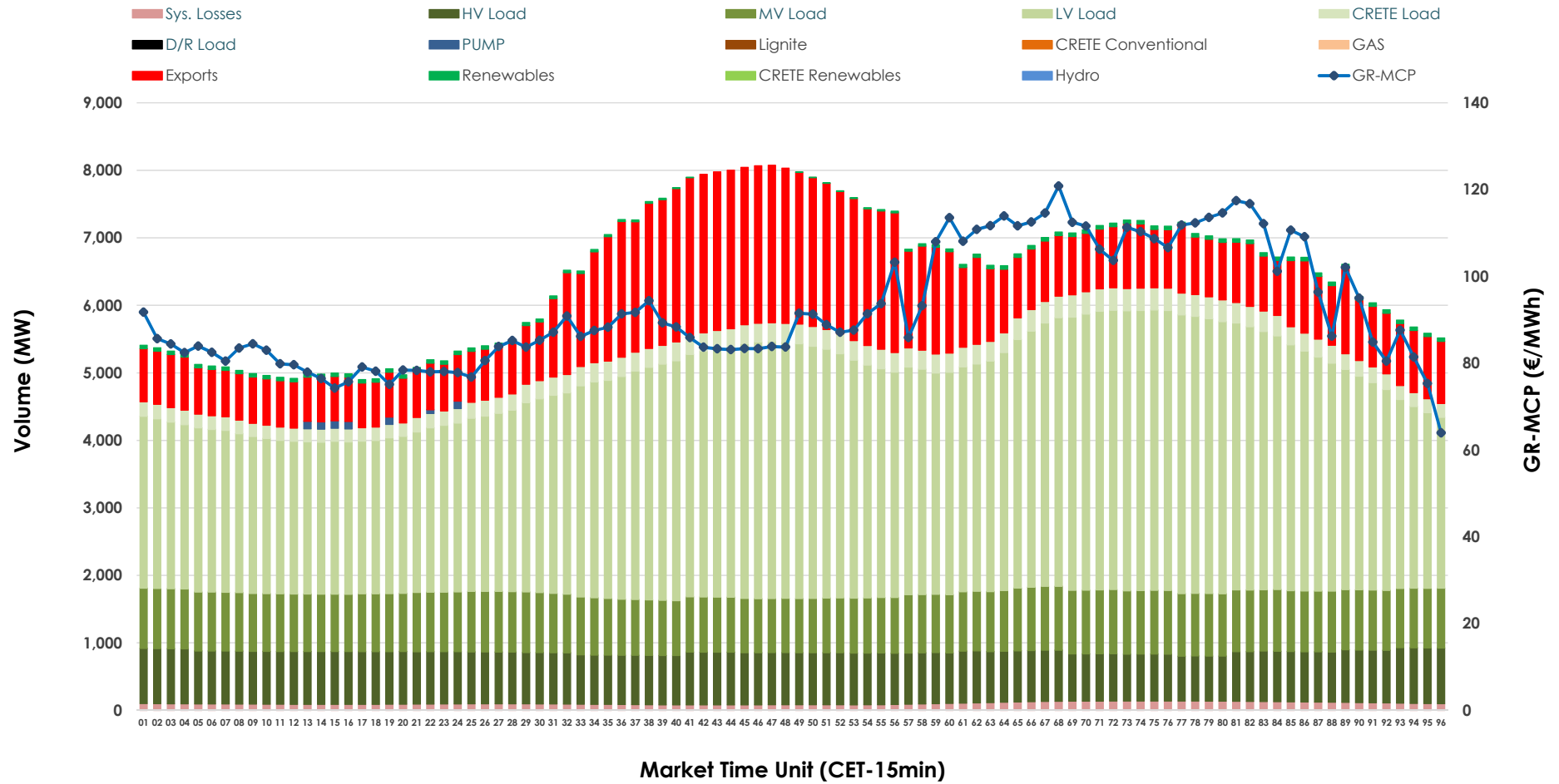


Day-Ahead Market Outlook

07.12.2025 Day-Ahead Market - Sell



07.12.2025 Day-Ahead Market - Buy



GR Bidding Zone Weekly Figures

Delivery Day	01.12	02.12	03.12	04.12	05.12	06.12	07.12
	↑ 39%	↓ -7%	↑ 18%	↓ -20%	↑ 6%	↓ -19%	↓ -9%
Avg.MCP (€/MWh)	133.81	124.38	147.20	118.02	125.14	101.30	92.44
Max.MCP (€/MWh)	269.66	220.96	281.94	160.00	171.61	131.70	120.83
Min.MCP (€/MWh)	0.01	74.57	97.38	87.19	72.35	70.51	63.96
	↑ 8%	→ 0%	↑ 2%	↑ 2%	→ -1%	↓ -10%	→ 0%
Tot.Vol(GWh)	332.18	333.15	340.23	347.06	345.15	309.54	309.78

Trades by Order Type

Delivery Day		01.12	02.12	03.12	04.12	05.12	06.12	07.12	
Ord Price Type		Sell & Buy Trades in (GWh) per Price Type							(%)
PPT	(S)	47.665	56.816	57.711	63.523	48.855	47.984	55.537	35.86%
HBD	(S)	59.256	50.929	55.475	53.686	58.591	47.848	54.266	35.04%
BLK	(S)	52.010	52.153	53.414	53.348	60.833	48.441	39.887	25.75%
CPL	(S)	7.158	6.675	3.517	2.976	4.295	10.498	5.201	3.36%
PPT	(B)	14.259	13.692	14.363	15.062	16.546	13.331	13.368	8.63%
HBD	(B)	131.836	140.603	141.927	142.637	143.672	130.388	122.185	78.88%
BLK	(B)	0.000	0.000	0.000	0.000	0.000	0.000	0.000	0.00%
CPL	(B)	19.994	12.278	13.827	15.834	12.357	11.052	19.337	12.48%
		Sell & Buy Orders Traded per Price Type							(%)
PPT	(S)	1811	1866	1830	1740	1672	1670	1787	40.86%
HBD	(S)	2547	2481	2721	2565	2746	2623	2571	58.78%
BLK	(S)	23	16	18	15	21	20	16	0.37%
PPT	(B)	2291	2252	2268	2305	2316	2233	2271	35.67%
HBD	(B)	4054	4134	4167	4323	4156	4091	4095	64.33%
BLK	(B)	0	0	0	0	0	0	0	0.00%

MCP	Market Clearing Price (€/MWh)
PPT	Priority Price-Taking
HBD	Hybrid
BLK	Block
CPL	Market Coupling Flow

Trade's Volume Mix

		Sell - MWh	Buy - MWh	
Lignite	(4.6%)	7,080	0	(0.0%)
Crete Conv.	(1.9%)	2,958	0	(0.0%)
Gas	(38.7%)	59,962	0	(0.0%)
Hydro	(6.2%)	9,603	0	(0.0%)
Imports	(7.9%)	12,304		
RES	(40.1%)	62,181	963	(0.6%)
Crete RES	(0.5%)	803	0	(0.0%)
HV Load	(0.0%)	0	18,229	(11.8%)
MV Load	(0.0%)	0	20,992	(13.6%)
LV Load	(0.0%)	0	76,994	(49.7%)
Crete Load	(0.0%)	0	6,313	(4.1%)
Pumping	(0.0%)	0	178	(0.1%)
Exports			28,731	(18.5%)
Sys.Losses	(0.0%)	0	2,490	(1.6%)
D/R Load	(0.0%)	0	0	(0.0%)

