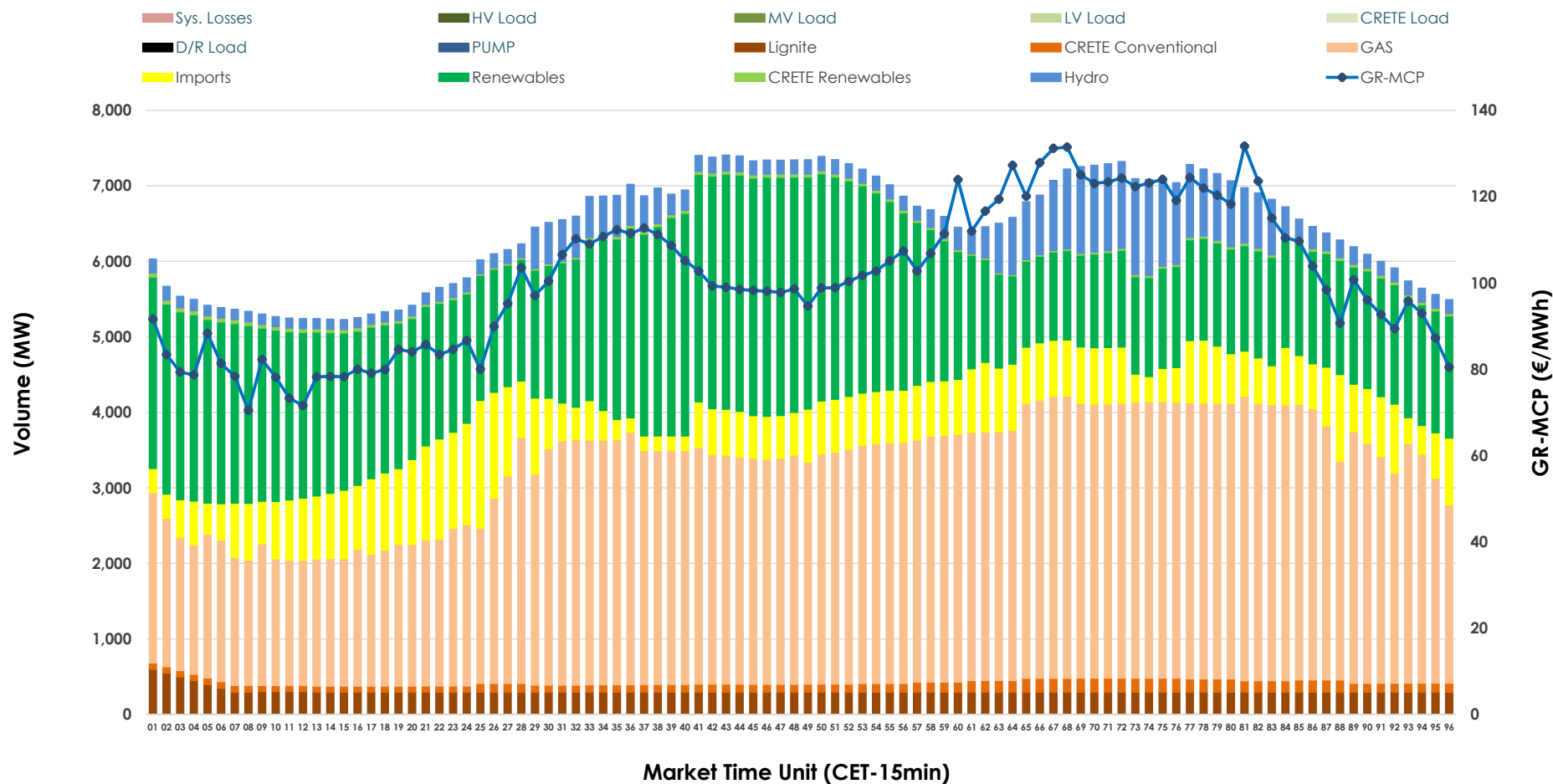


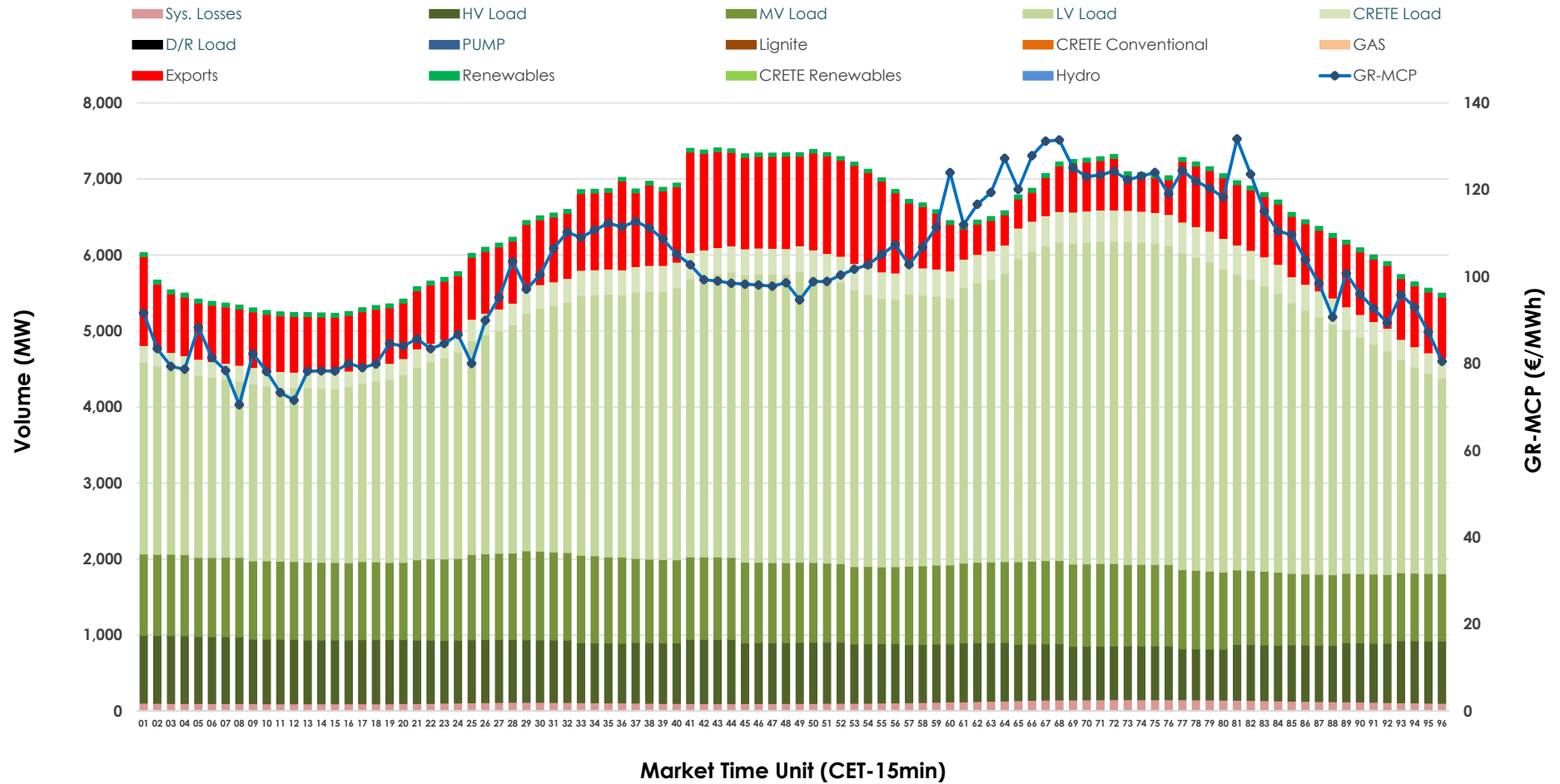


## Day-Ahead Market Outlook

06.12.2025 Day-Ahead Market - Sell



## 06.12.2025 Day-Ahead Market - Buy



### GR Bidding Zone Weekly Figures

Delivery Day	30.11	01.12	02.12	03.12	04.12	05.12	06.12
	📉 -13%	📈 39%	📉 -7%	📈 18%	📉 -20%	📈 6%	📉 -19%
Avg.MCP (€/MWh)	96.32	133.81	124.38	147.20	118.02	125.14	101.30
Max.MCP (€/MWh)	135.68	269.66	220.96	281.94	160.00	171.61	131.70
Min.MCP (€/MWh)	5.75	0.01	74.57	97.38	87.19	72.35	70.51
	📉 -1%	📈 8%	➡️ 0%	📈 2%	📈 2%	➡️ -1%	📉 -10%
Tot.Vol(GWh)	306.78	332.18	333.15	340.23	347.06	345.15	309.54

### Trades by Order Type

Delivery Day		30.11	01.12	02.12	03.12	04.12	05.12	06.12	
Ord Price Type		Sell & Buy Trades in (GWh) per Price Type							(%)
PPT	(S)	52.633	47.665	56.816	57.711	63.523	48.855	47.984	31.00%
HBD	(S)	55.196	59.256	50.929	55.475	53.686	58.591	47.848	30.92%
BLK	(S)	33.808	52.010	52.153	53.414	53.348	60.833	48.441	31.30%
CPL	(S)	11.754	7.158	6.675	3.517	2.976	4.295	10.498	6.78%
PPT	(B)	13.301	14.259	13.692	14.363	15.062	16.546	13.331	8.61%
HBD	(B)	121.715	131.836	140.603	141.927	142.637	143.672	130.388	84.25%
BLK	(B)	0.000	0.000	0.000	0.000	0.000	0.000	0.000	0.00%
CPL	(B)	18.373	19.994	12.278	13.827	15.834	12.357	11.052	7.14%
		Sell & Buy Orders Traded per Price Type							(%)
PPT	(S)	1698	1811	1866	1830	1740	1672	1670	38.72%
HBD	(S)	2448	2547	2481	2721	2565	2746	2623	60.82%
BLK	(S)	13	23	16	18	15	21	20	0.46%
PPT	(B)	2268	2291	2252	2268	2305	2316	2233	35.31%
HBD	(B)	4149	4054	4134	4167	4323	4156	4091	64.69%
BLK	(B)	0	0	0	0	0	0	0	0.00%

<b>MCP</b>	Market Clearing Price (€/MWh)
<b>PPT</b>	Priority Price-Taking
<b>HBD</b>	Hybrid
<b>BLK</b>	Block
<b>CPL</b>	Market Coupling Flow

### Trade's Volume Mix

		Sell - MWh	Buy - MWh	
Lignite	(4.8%)	7,400	0	(0.0%)
Crete Conv.	(1.9%)	2,877	0	(0.0%)
Gas	(44.9%)	69,518	0	(0.0%)
Hydro	(6.1%)	9,486	0	(0.0%)
Imports	(11.0%)	16,956		
RES	(30.8%)	47,709	1,191	(0.8%)
Crete RES	(0.5%)	825	0	(0.0%)
HV Load	(0.0%)	0	19,013	(12.3%)
MV Load	(0.0%)	0	25,062	(16.2%)
LV Load	(0.0%)	0	79,152	(51.1%)
Crete Load	(0.0%)	0	7,623	(4.9%)
Pumping	(0.0%)	0	0	(0.0%)
Exports			19,936	(12.9%)
Sys.Losses	(0.0%)	0	2,794	(1.8%)
D/R Load	(0.0%)	0	0	(0.0%)

