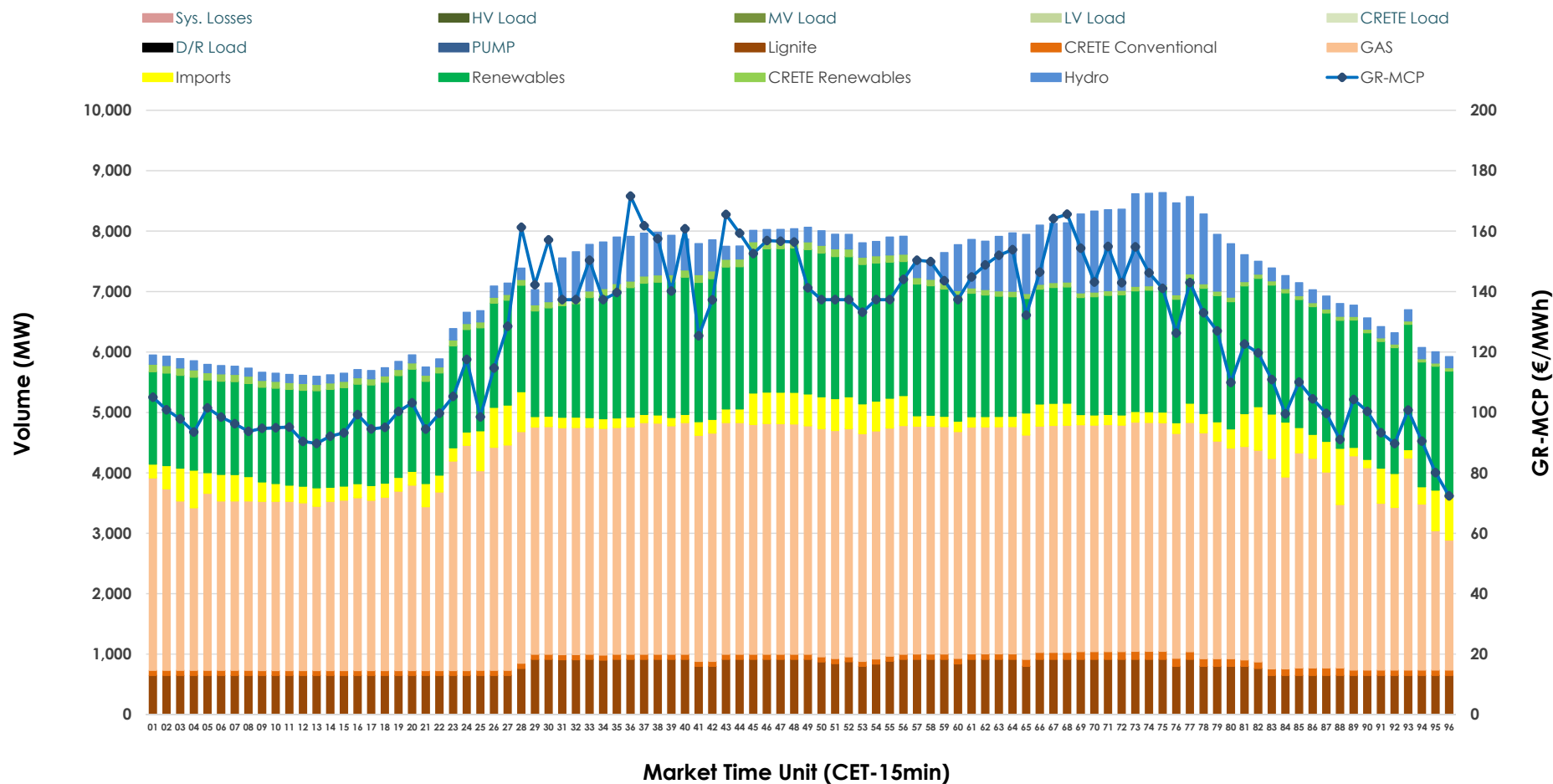


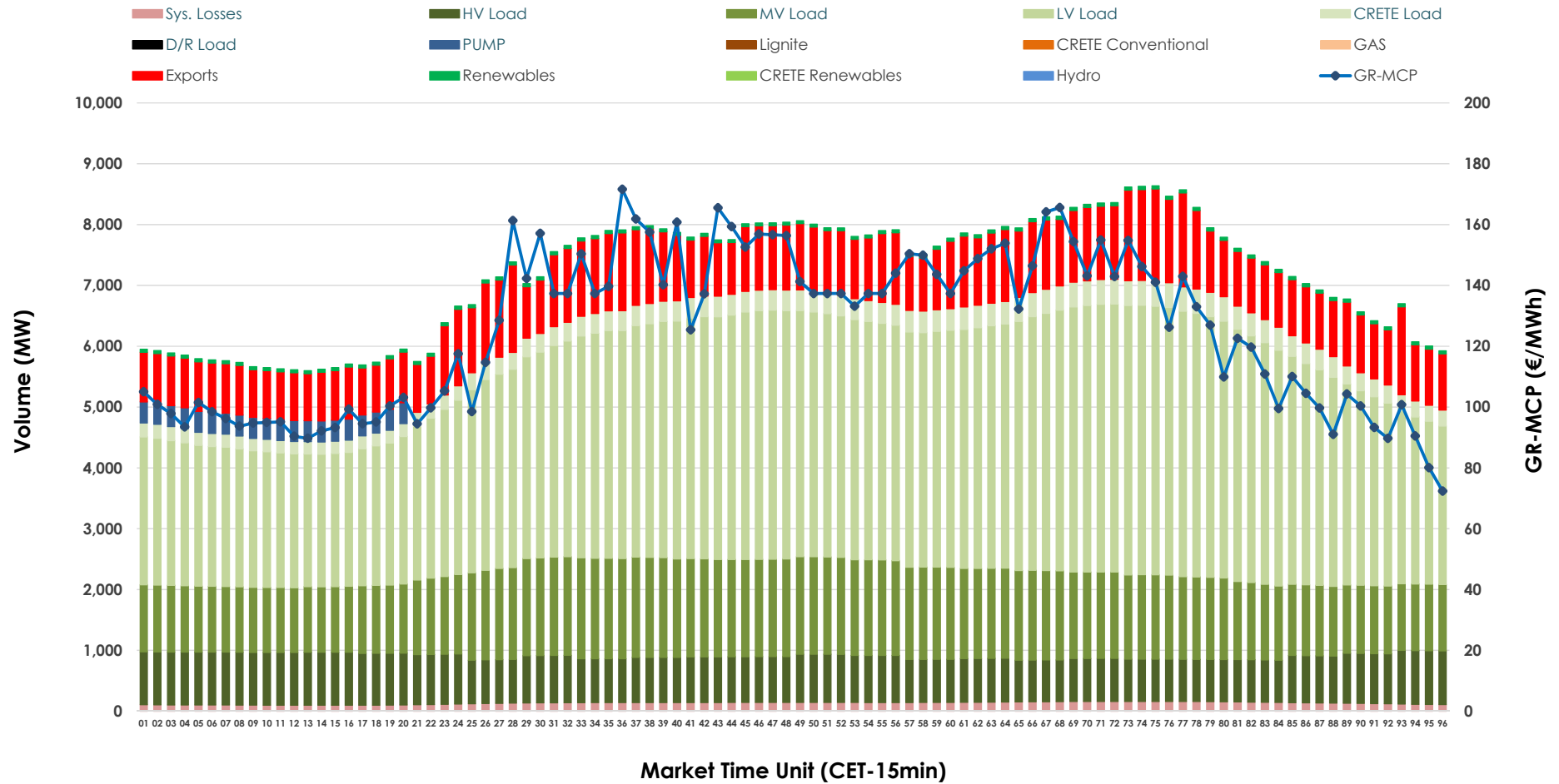


Day-Ahead Market Outlook

05.12.2025 Day-Ahead Market - Sell



05.12.2025 Day-Ahead Market - Buy



GR Bidding Zone Weekly Figures

Delivery Day	29.11	30.11	01.12	02.12	03.12	04.12	05.12
	↗ 7%	↘ -13%	↗ 39%	↘ -7%	↗ 18%	↘ -20%	↗ 6%
Avg.MCP (€/MWh)	110.88	96.32	133.81	124.38	147.20	118.02	125.14
Max.MCP (€/MWh)	149.30	135.68	269.66	220.96	281.94	160.00	171.61
Min.MCP (€/MWh)	83.71	5.75	0.01	74.57	97.38	87.19	72.35
	↘ -8%	↘ -1%	↗ 8%	→ 0%	↗ 2%	↗ 2%	→ -1%
Tot.Vol(GWh)	310.78	306.78	332.18	333.15	340.23	347.06	345.15

Trades by Order Type

Delivery Day		29.11	30.11	01.12	02.12	03.12	04.12	05.12	
Ord Price Type		Sell & Buy Trades in (GWh) per Price Type							(%)
PPT	(S)	49.819	52.633	47.665	56.816	57.711	63.523	48.855	28.31%
HBD	(S)	54.805	55.196	59.256	50.929	55.475	53.686	58.591	33.95%
BLK	(S)	34.196	33.808	52.010	52.153	53.414	53.348	60.833	35.25%
CPL	(S)	16.572	11.754	7.158	6.675	3.517	2.976	4.295	2.49%
PPT	(B)	12.650	13.301	14.259	13.692	14.363	15.062	16.546	9.59%
HBD	(B)	129.330	121.715	131.836	140.603	141.927	142.637	143.672	83.25%
BLK	(B)	0.000	0.000	0.000	0.000	0.000	0.000	0.000	0.00%
CPL	(B)	13.411	18.373	19.994	12.278	13.827	15.834	12.357	7.16%
		Sell & Buy Orders Traded per Price Type							(%)
PPT	(S)	1745	1698	1811	1866	1830	1740	1672	37.67%
HBD	(S)	2686	2448	2547	2481	2721	2565	2746	61.86%
BLK	(S)	16	13	23	16	18	15	21	0.47%
PPT	(B)	2223	2268	2291	2252	2268	2305	2316	35.78%
HBD	(B)	4141	4149	4054	4134	4167	4323	4156	64.22%
BLK	(B)	0	0	0	0	0	0	0	0.00%

MCP	Market Clearing Price (€/MWh)
PPT	Priority Price-Taking
HBD	Hybrid
BLK	Block
CPL	Market Coupling Flow

Trade's Volume Mix

		Sell - MWh	Buy - MWh	
Lignite	(10.9%)	18,760	0	(0.0%)
Crete Conv.	(1.3%)	2,265	0	(0.0%)
Gas	(47.8%)	82,538	0	(0.0%)
Hydro	(6.4%)	11,081	0	(0.0%)
Imports	(4.8%)	8,289		
RES	(27.4%)	47,291	1,203	(0.7%)
Crete RES	(1.4%)	2,351	0	(0.0%)
HV Load	(0.0%)	0	18,577	(10.8%)
MV Load	(0.0%)	0	32,731	(19.0%)
LV Load	(0.0%)	0	82,866	(48.0%)
Crete Load	(0.0%)	0	7,523	(4.4%)
Pumping	(0.0%)	0	1,725	(1.0%)
Exports			24,779	(14.4%)
Sys.Losses	(0.0%)	0	3,172	(1.8%)
D/R Load	(0.0%)	0	0	(0.0%)

