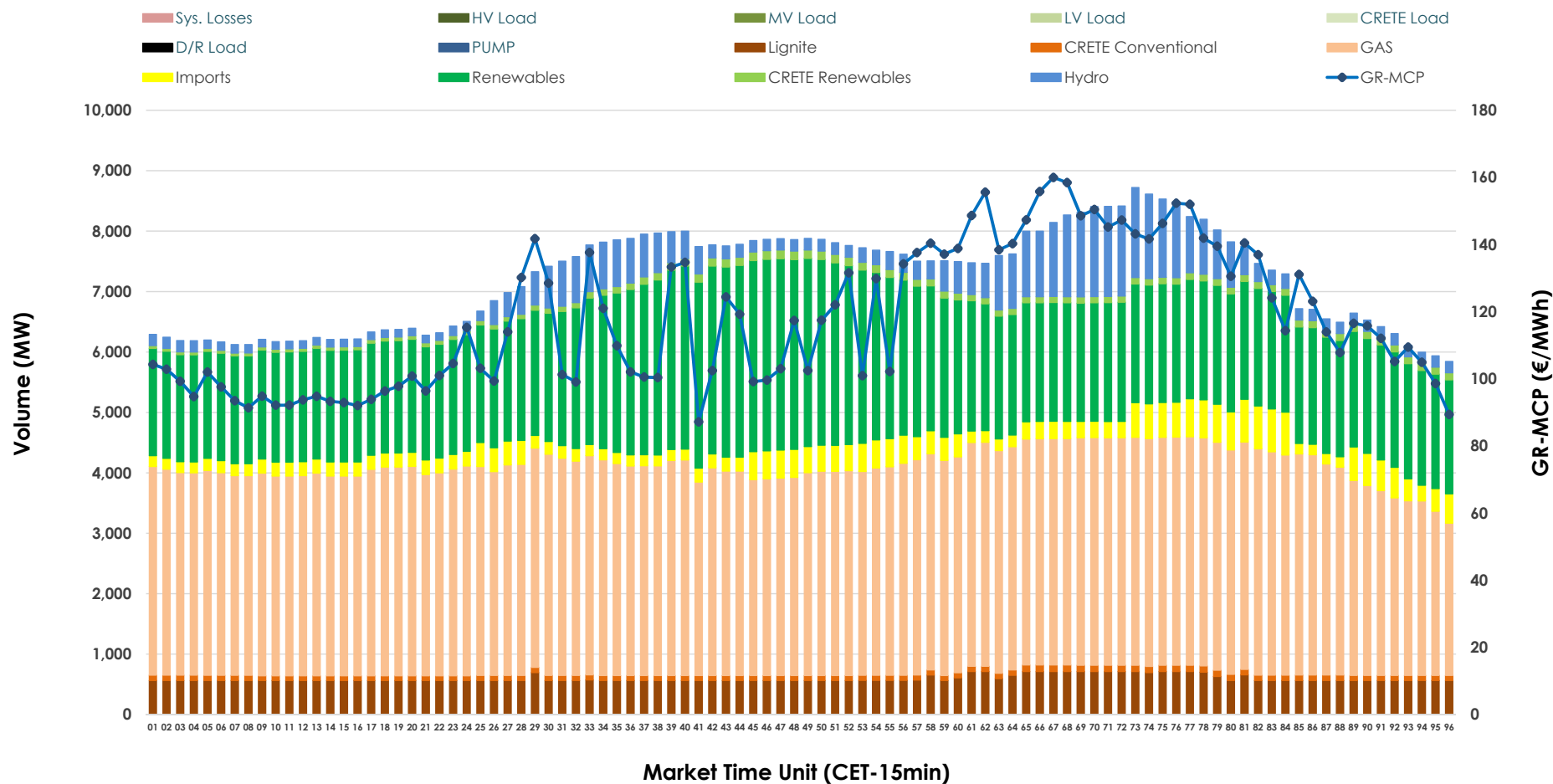


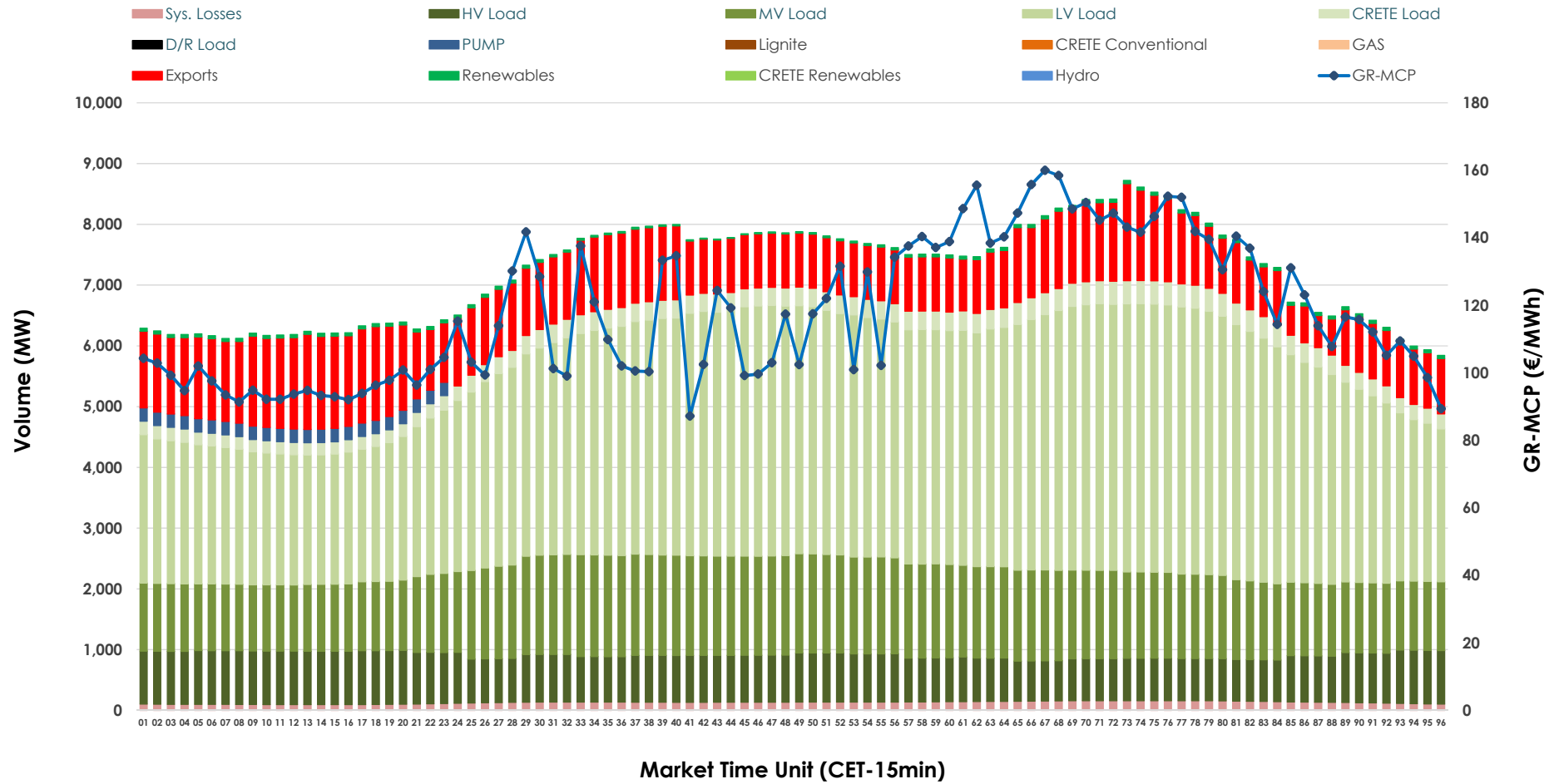


Day-Ahead Market Outlook

04.12.2025 Day-Ahead Market - Sell



04.12.2025 Day-Ahead Market - Buy



GR Bidding Zone Weekly Figures

Delivery Day	28.11	29.11	30.11	01.12	02.12	03.12	04.12
	↗ 1%	↗ 7%	↘ -13%	↗ 39%	↘ -7%	↗ 18%	↘ -20%
Avg.MCP (€/MWh)	103.26	110.88	96.32	133.81	124.38	147.20	118.02
Max.MCP (€/MWh)	163.48	149.30	135.68	269.66	220.96	281.94	160.00
Min.MCP (€/MWh)	61.47	83.71	5.75	0.01	74.57	97.38	87.19
	↘ -6%	↘ -8%	↘ -1%	↗ 8%	→ 0%	↗ 2%	↗ 2%
Tot.Vol(GWh)	338.12	310.78	306.78	332.18	333.15	340.23	347.06

Trades by Order Type

Delivery Day		28.11	29.11	30.11	01.12	02.12	03.12	04.12	
Ord Price Type		Sell & Buy Trades in (GWh) per Price Type							(%)
PPT	(S)	63.160	49.819	52.633	47.665	56.816	57.711	63.523	36.61%
HBD	(S)	62.070	54.805	55.196	59.256	50.929	55.475	53.686	30.94%
BLK	(S)	42.256	34.196	33.808	52.010	52.153	53.414	53.348	30.74%
CPL	(S)	1.574	16.572	11.754	7.158	6.675	3.517	2.976	1.72%
PPT	(B)	13.589	12.650	13.301	14.259	13.692	14.363	15.062	8.68%
HBD	(B)	134.322	129.330	121.715	131.836	140.603	141.927	142.637	82.20%
BLK	(B)	0.000	0.000	0.000	0.000	0.000	0.000	0.000	0.00%
CPL	(B)	21.148	13.411	18.373	19.994	12.278	13.827	15.834	9.12%
		Sell & Buy Orders Traded per Price Type							(%)
PPT	(S)	1776	1745	1698	1811	1866	1830	1740	40.28%
HBD	(S)	2682	2686	2448	2547	2481	2721	2565	59.38%
BLK	(S)	14	16	13	23	16	18	15	0.35%
PPT	(B)	2227	2223	2268	2291	2252	2268	2305	34.78%
HBD	(B)	4056	4141	4149	4054	4134	4167	4323	65.22%
BLK	(B)	0	0	0	0	0	0	0	0.00%

MCP	Market Clearing Price (€/MWh)
PPT	Priority Price-Taking
HBD	Hybrid
BLK	Block
CPL	Market Coupling Flow

Trade's Volume Mix

		Sell - MWh	Buy - MWh	
Lignite	(8.2%)	14,225	0	(0.0%)
Crete Conv.	(1.2%)	2,117	0	(0.0%)
Gas	(48.0%)	83,210	0	(0.0%)
Hydro	(6.3%)	11,011	0	(0.0%)
Imports	(4.6%)	7,991		
RES	(30.3%)	52,621	1,041	(0.6%)
Crete RES	(1.4%)	2,357	0	(0.0%)
HV Load	(0.0%)	0	18,762	(10.8%)
MV Load	(0.0%)	0	33,378	(19.2%)
LV Load	(0.0%)	0	82,519	(47.6%)
Crete Load	(0.0%)	0	7,002	(4.0%)
Pumping	(0.0%)	0	1,265	(0.7%)
Exports			26,454	(15.2%)
Sys.Losses	(0.0%)	0	3,112	(1.8%)
D/R Load	(0.0%)	0	0	(0.0%)

