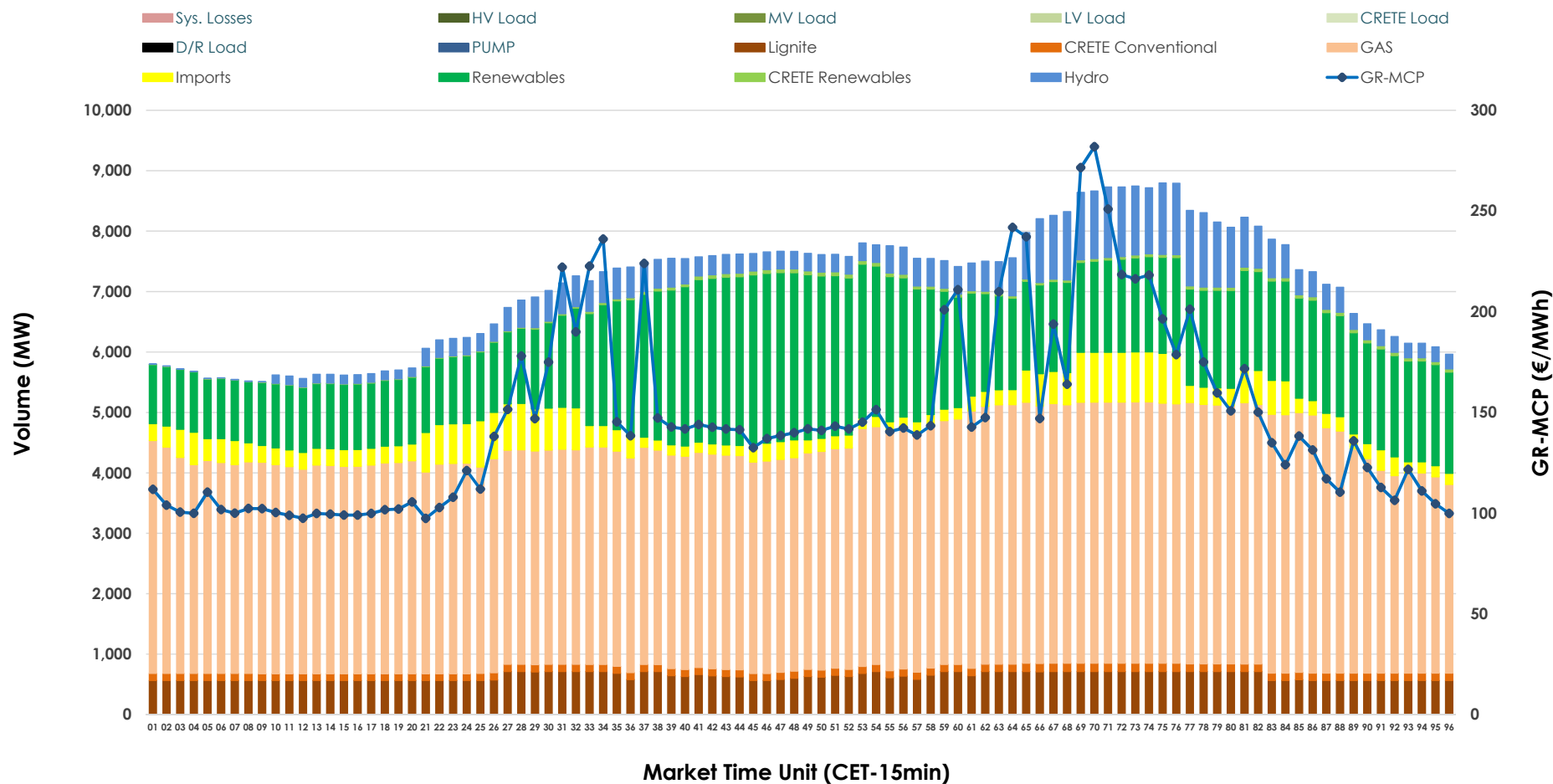


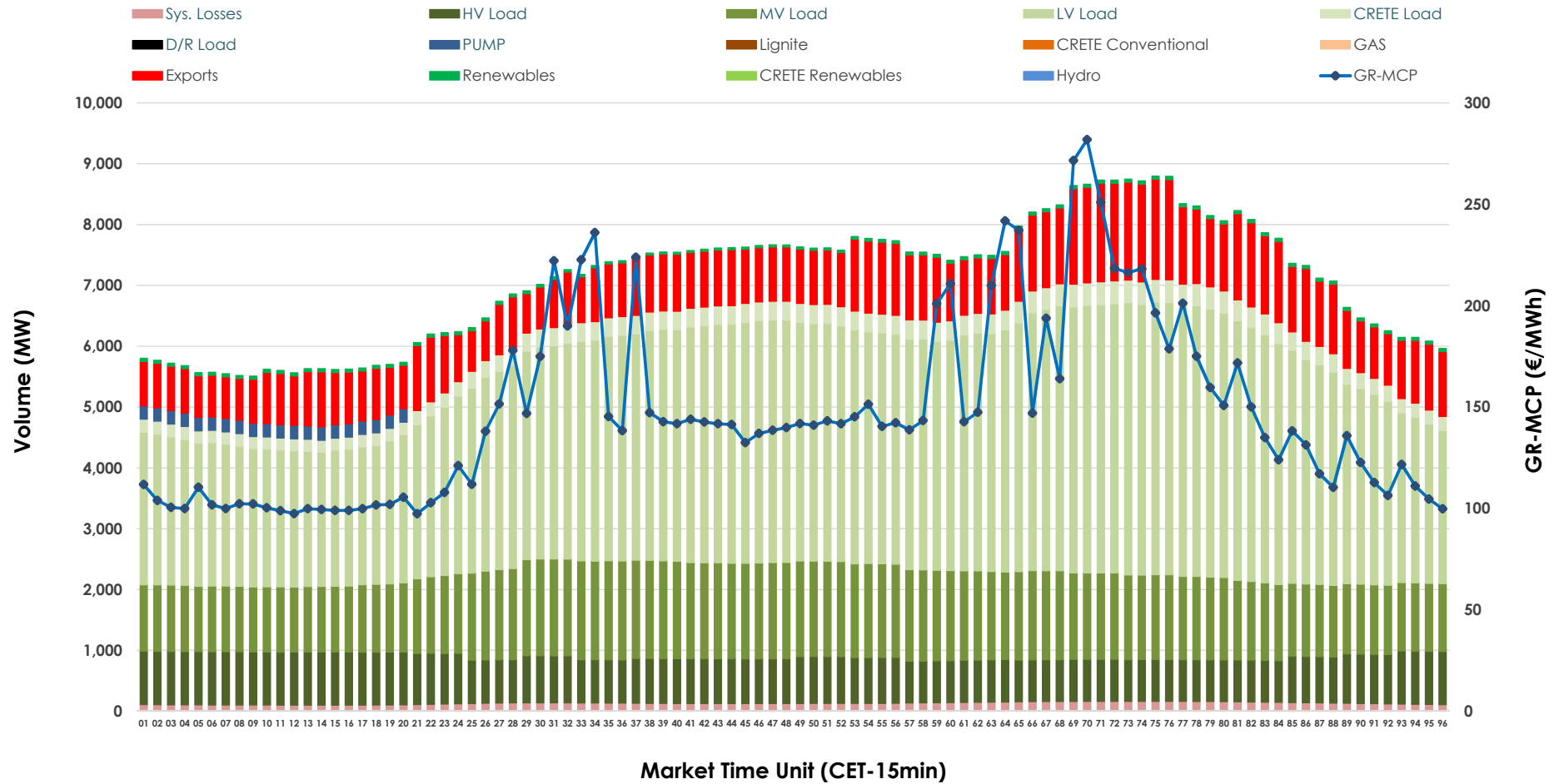


Day-Ahead Market Outlook

03.12.2025 Day-Ahead Market - Sell



03.12.2025 Day-Ahead Market - Buy



GR Bidding Zone Weekly Figures

Delivery Day	27.11	28.11	29.11	30.11	01.12	02.12	03.12
	↗ 8%	↗ 1%	↗ 7%	↘ -13%	↗ 39%	↘ -7%	↗ 18%
Avg.MCP (€/MWh)	101.80	103.26	110.88	96.32	133.81	124.38	147.20
Max.MCP (€/MWh)	182.92	163.48	149.30	135.68	269.66	220.96	281.94
Min.MCP (€/MWh)	51.81	61.47	83.71	5.75	0.01	74.57	97.38
	↘ -3%	↘ -6%	↘ -8%	↘ -1%	↗ 8%	➡ 0%	↗ 2%
Tot.Vol(GWh)	358.25	338.12	310.78	306.78	332.18	333.15	340.23

Trades by Order Type

Delivery Day		27.11	28.11	29.11	30.11	01.12	02.12	03.12	
Ord Price Type		Sell & Buy Trades in (GWh) per Price Type							(%)
PPT	(S)	72.053	63.160	49.819	52.633	47.665	56.816	57.711	33.92%
HBD	(S)	66.659	62.070	54.805	55.196	59.256	50.929	55.475	32.61%
BLK	(S)	39.989	42.256	34.196	33.808	52.010	52.153	53.414	31.40%
CPL	(S)	0.425	1.574	16.572	11.754	7.158	6.675	3.517	2.07%
PPT	(B)	15.538	13.589	12.650	13.301	14.259	13.692	14.363	8.44%
HBD	(B)	134.346	134.322	129.330	121.715	131.836	140.603	141.927	83.43%
BLK	(B)	0.000	0.000	0.000	0.000	0.000	0.000	0.000	0.00%
CPL	(B)	29.243	21.148	13.411	18.373	19.994	12.278	13.827	8.13%
		Sell & Buy Orders Traded per Price Type							(%)
PPT	(S)	1747	1776	1745	1698	1811	1866	1830	40.05%
HBD	(S)	2542	2682	2686	2448	2547	2481	2721	59.55%
BLK	(S)	13	14	16	13	23	16	18	0.39%
PPT	(B)	2330	2227	2223	2268	2291	2252	2268	35.24%
HBD	(B)	4151	4056	4141	4149	4054	4134	4167	64.76%
BLK	(B)	0	0	0	0	0	0	0	0.00%

MCP	Market Clearing Price (€/MWh)
PPT	Priority Price-Taking
HBD	Hybrid
BLK	Block
CPL	Market Coupling Flow

Trade's Volume Mix

		Sell - MWh	Buy - MWh	
Lignite	(8.9%)	15,106	0	(0.0%)
Crete Conv.	(1.7%)	2,892	0	(0.0%)
Gas	(53.2%)	90,537	0	(0.0%)
Hydro	(6.3%)	10,784	0	(0.0%)
Imports	(5.4%)	9,254		
RES	(23.9%)	40,624	1,119	(0.7%)
Crete RES	(0.5%)	920	0	(0.0%)
HV Load	(0.0%)	0	18,406	(10.8%)
MV Load	(0.0%)	0	32,598	(19.2%)
LV Load	(0.0%)	0	82,876	(48.7%)
Crete Load	(0.0%)	0	6,938	(4.1%)
Pumping	(0.0%)	0	1,100	(0.6%)
Exports			23,967	(14.1%)
Sys.Losses	(0.0%)	0	3,113	(1.8%)
D/R Load	(0.0%)	0	0	(0.0%)

