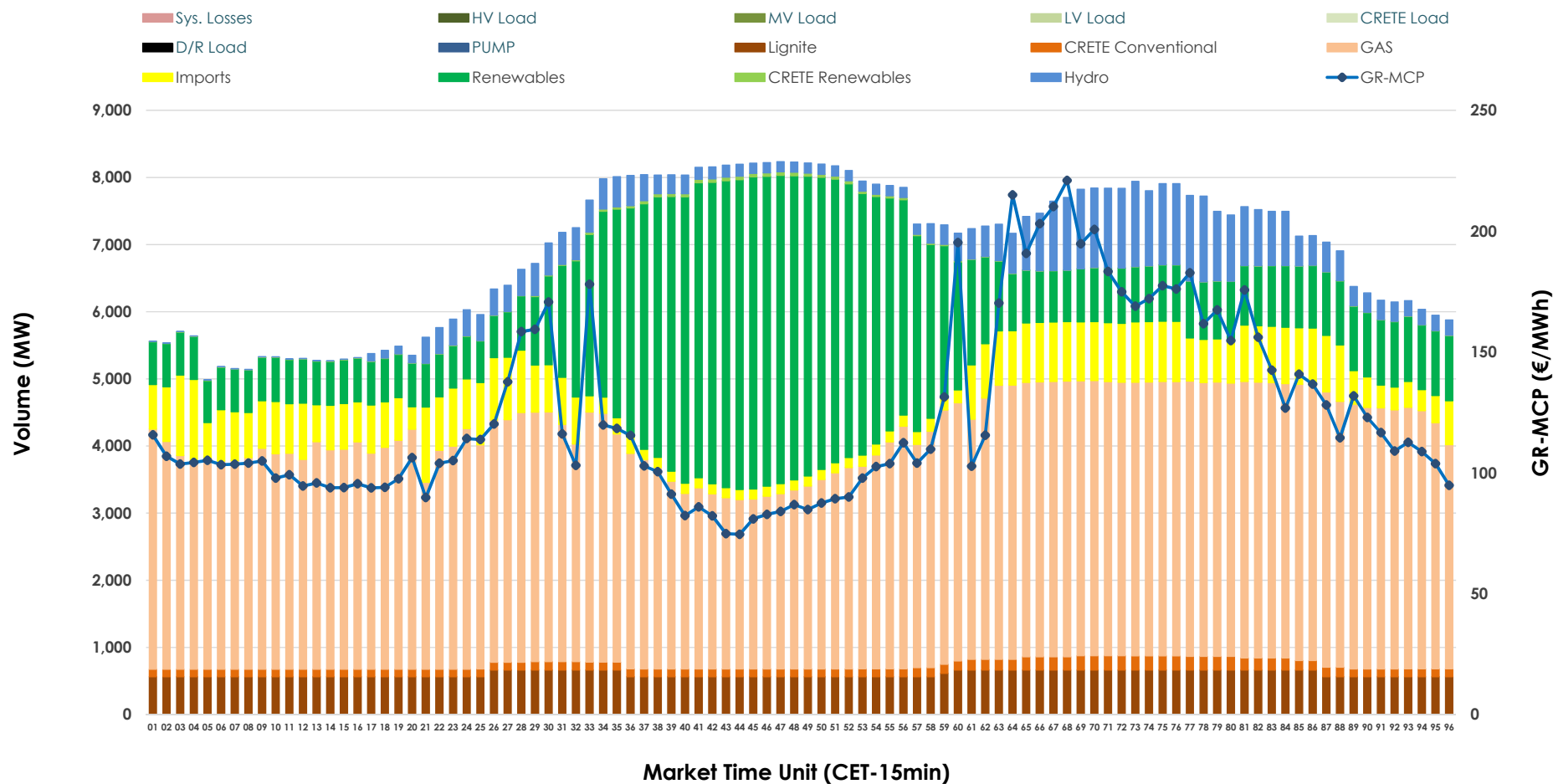


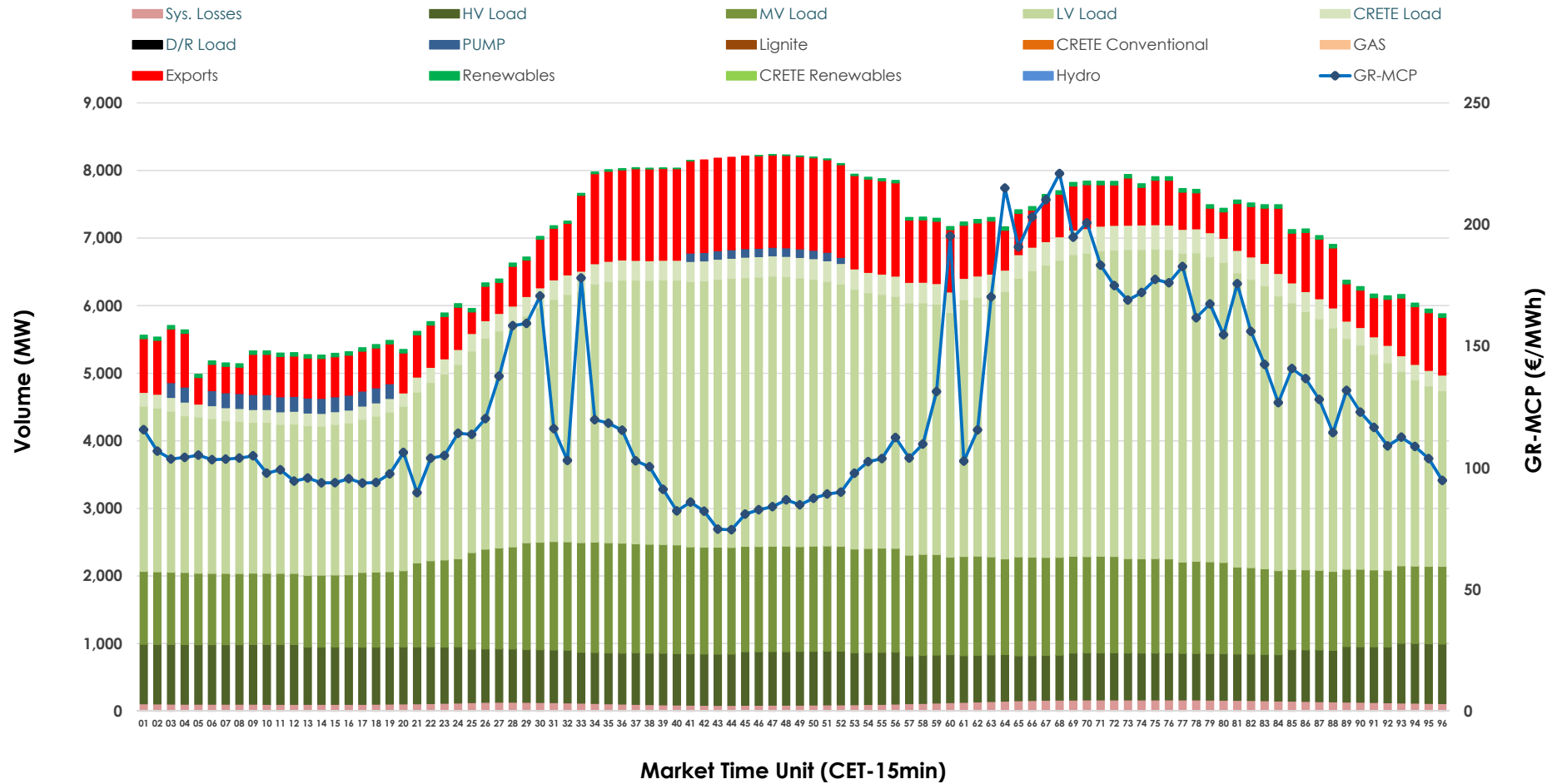


Day-Ahead Market Outlook

02.12.2025 Day-Ahead Market - Sell



02.12.2025 Day-Ahead Market - Buy



GR Bidding Zone Weekly Figures

Delivery Day	26.11	27.11	28.11	29.11	30.11	01.12	02.12
	⬇️ -16%	⬆️ 8%	⬆️ 1%	⬆️ 7%	⬇️ -13%	⬆️ 39%	⬇️ -7%
Avg.MCP (€/MWh)	94.31	101.80	103.26	110.88	96.32	133.81	124.38
Max.MCP (€/MWh)	316.34	182.92	163.48	149.30	135.68	269.66	220.96
Min.MCP (€/MWh)	0.01	51.81	61.47	83.71	5.75	0.01	74.57
	⬆️ 6%	⬇️ -3%	⬇️ -6%	⬇️ -8%	⬇️ -1%	⬆️ 8%	➡️ 0%
Tot.Vol(GWh)	367.86	358.25	338.12	310.78	306.78	332.18	333.15

Trades by Order Type

Delivery Day		26.11	27.11	28.11	29.11	30.11	01.12	02.12	
Ord Price Type		Sell & Buy Trades in (GWh) per Price Type							(%)
PPT	(S)	73.936	72.053	63.160	49.819	52.633	47.665	56.816	34.11%
HBD	(S)	72.262	66.659	62.070	54.805	55.196	59.256	50.929	30.57%
BLK	(S)	37.734	39.989	42.256	34.196	33.808	52.010	52.153	31.31%
CPL	(S)	0.000	0.425	1.574	16.572	11.754	7.158	6.675	4.01%
PPT	(B)	15.188	15.538	13.589	12.650	13.301	14.259	13.692	8.22%
HBD	(B)	135.790	134.346	134.322	129.330	121.715	131.836	140.603	84.41%
BLK	(B)	0.000	0.000	0.000	0.000	0.000	0.000	0.000	0.00%
CPL	(B)	32.954	29.243	21.148	13.411	18.373	19.994	12.278	7.37%
		Sell & Buy Orders Traded per Price Type							(%)
PPT	(S)	1747	1747	1776	1745	1698	1811	1866	42.77%
HBD	(S)	2477	2542	2682	2686	2448	2547	2481	56.86%
BLK	(S)	16	13	14	16	13	23	16	0.37%
PPT	(B)	2339	2330	2227	2223	2268	2291	2252	35.26%
HBD	(B)	4271	4151	4056	4141	4149	4054	4134	64.74%
BLK	(B)	0	0	0	0	0	0	0	0.00%

MCP	Market Clearing Price (€/MWh)
PPT	Priority Price-Taking
HBD	Hybrid
BLK	Block
CPL	Market Coupling Flow

Trade's Volume Mix

		Sell - MWh	Buy - MWh	
Lignite	(8.7%)	14,426	0	(0.0%)
Crete Conv.	(2.0%)	3,304	0	(0.0%)
Gas	(50.5%)	84,129	0	(0.0%)
Hydro	(5.9%)	9,839	0	(0.0%)
Imports	(8.4%)	13,966		
RES	(24.3%)	40,523	964	(0.6%)
Crete RES	(0.2%)	386	0	(0.0%)
HV Load	(0.0%)	0	18,674	(11.2%)
MV Load	(0.0%)	0	32,496	(19.5%)
LV Load	(0.0%)	0	83,560	(50.2%)
Crete Load	(0.0%)	0	6,736	(4.0%)
Pumping	(0.0%)	0	1,247	(0.7%)
Exports			19,960	(12.0%)
Sys.Losses	(0.0%)	0	2,936	(1.8%)
D/R Load	(0.0%)	0	0	(0.0%)

