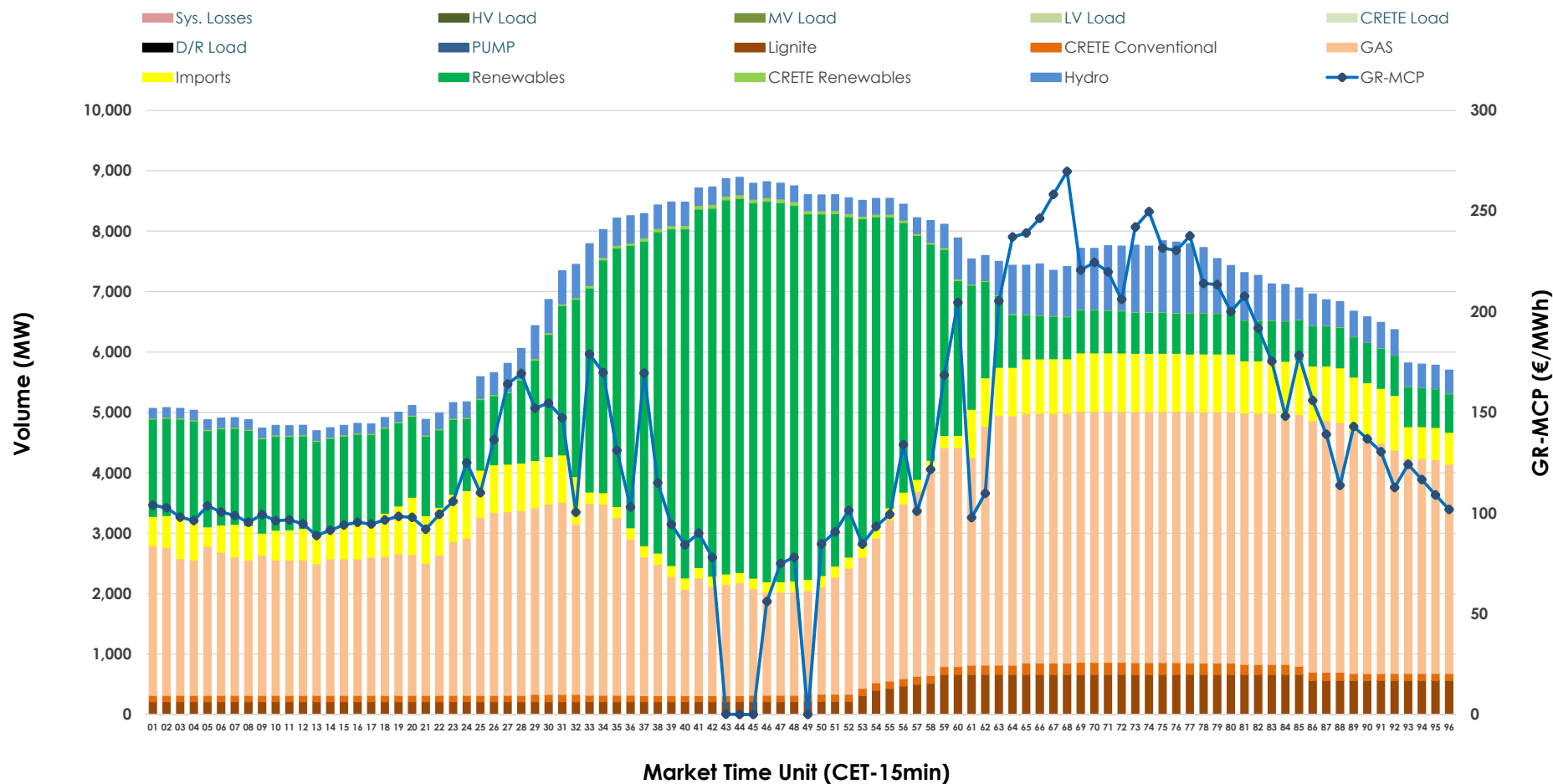


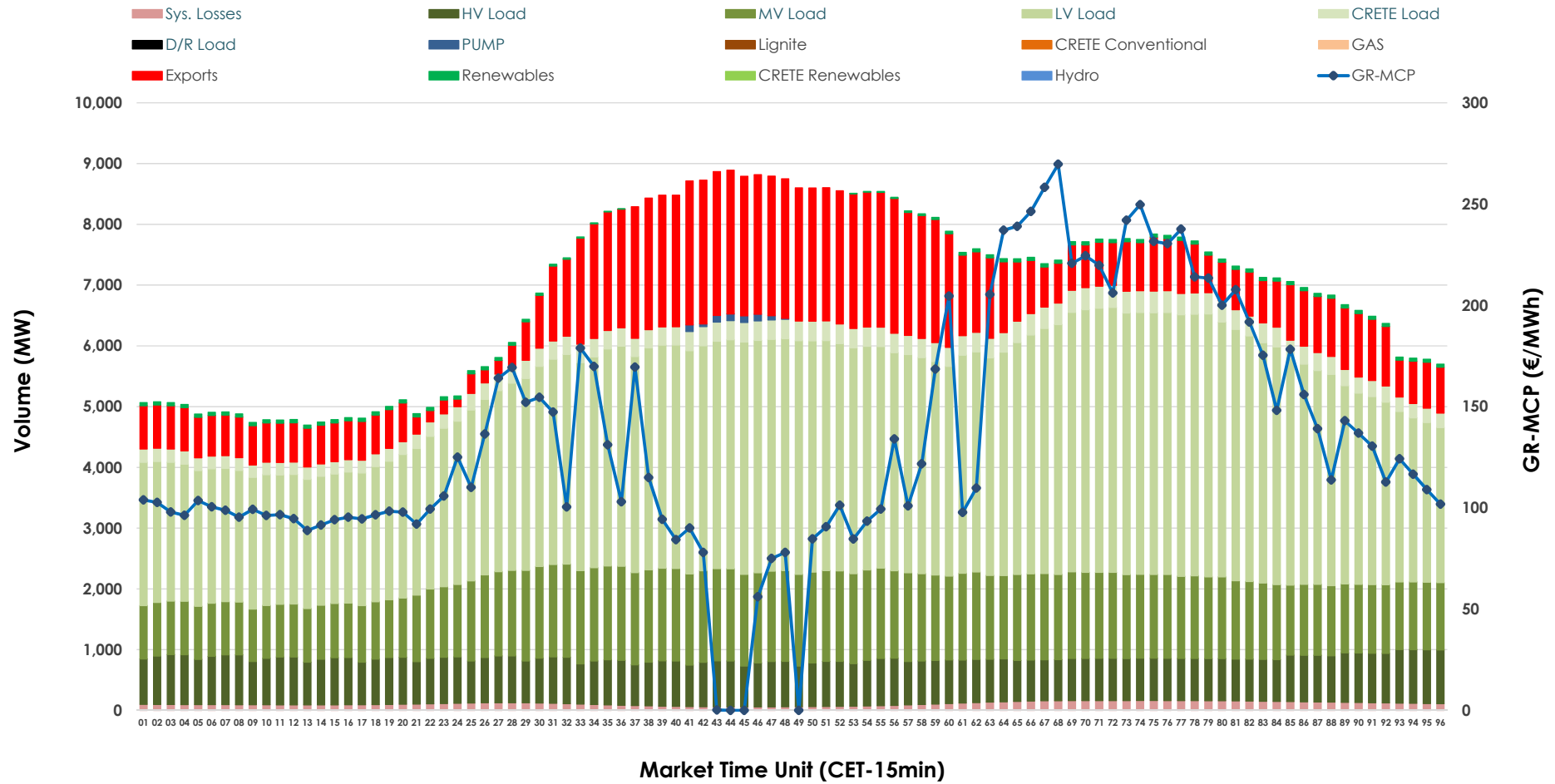


Day-Ahead Market Outlook

01.12.2025 Day-Ahead Market - Sell



01.12.2025 Day-Ahead Market - Buy



GR Bidding Zone Weekly Figures

Delivery Day	25.11	26.11	27.11	28.11	29.11	30.11	01.12
	↗ 3%	↘ -16%	↗ 8%	↗ 1%	↗ 7%	↘ -13%	↗ 39%
Avg.MCP (€/MWh)	111.87	94.31	101.80	103.26	110.88	96.32	133.81
Max.MCP (€/MWh)	347.85	316.34	182.92	163.48	149.30	135.68	269.66
Min.MCP (€/MWh)	25.55	0.01	51.81	61.47	83.71	5.75	0.01
	↗ 11%	↗ 6%	↘ -3%	↘ -6%	↘ -8%	↘ -1%	↗ 8%
Tot.Vol(GWh)	345.84	367.86	358.25	338.12	310.78	306.78	332.18

Trades by Order Type

Delivery Day		25.11	26.11	27.11	28.11	29.11	30.11	01.12	
Ord Price Type		Sell & Buy Trades in (GWh) per Price Type							(%)
PPT	(S)	57.792	73.936	72.053	63.160	49.819	52.633	47.665	28.70%
HBD	(S)	70.251	72.262	66.659	62.070	54.805	55.196	59.256	35.68%
BLK	(S)	42.499	37.734	39.989	42.256	34.196	33.808	52.010	31.31%
CPL	(S)	2.378	0.000	0.425	1.574	16.572	11.754	7.158	4.31%
PPT	(B)	14.939	15.188	15.538	13.589	12.650	13.301	14.259	8.59%
HBD	(B)	132.009	135.790	134.346	134.322	129.330	121.715	131.836	79.38%
BLK	(B)	0.000	0.000	0.000	0.000	0.000	0.000	0.000	0.00%
CPL	(B)	25.971	32.954	29.243	21.148	13.411	18.373	19.994	12.04%
		Sell & Buy Orders Traded per Price Type							(%)
PPT	(S)	1748	1747	1747	1776	1745	1698	1811	41.34%
HBD	(S)	2719	2477	2542	2682	2686	2448	2547	58.14%
BLK	(S)	15	16	13	14	16	13	23	0.52%
PPT	(B)	2336	2339	2330	2227	2223	2268	2291	36.11%
HBD	(B)	4121	4271	4151	4056	4141	4149	4054	63.89%
BLK	(B)	0	0	0	0	0	0	0	0.00%

MCP	Market Clearing Price (€/MWh)
PPT	Priority Price-Taking
HBD	Hybrid
BLK	Block
CPL	Market Coupling Flow

Trade's Volume Mix

		Sell - MWh	Buy - MWh	
Lignite	(5.7%)	9,434	0	(0.0%)
Crete Conv.	(1.9%)	3,130	0	(0.0%)
Gas	(43.8%)	72,664	0	(0.0%)
Hydro	(6.5%)	10,796	0	(0.0%)
Imports	(8.6%)	14,307		
RES	(33.2%)	55,132	893	(0.5%)
Crete RES	(0.4%)	627	0	(0.0%)
HV Load	(0.0%)	0	17,783	(10.7%)
MV Load	(0.0%)	0	30,590	(18.4%)
LV Load	(0.0%)	0	79,447	(47.8%)
Crete Load	(0.0%)	0	6,930	(4.2%)
Pumping	(0.0%)	0	170	(0.1%)
Exports			27,613	(16.6%)
Sys.Losses	(0.0%)	0	2,663	(1.6%)
D/R Load	(0.0%)	0	0	(0.0%)

