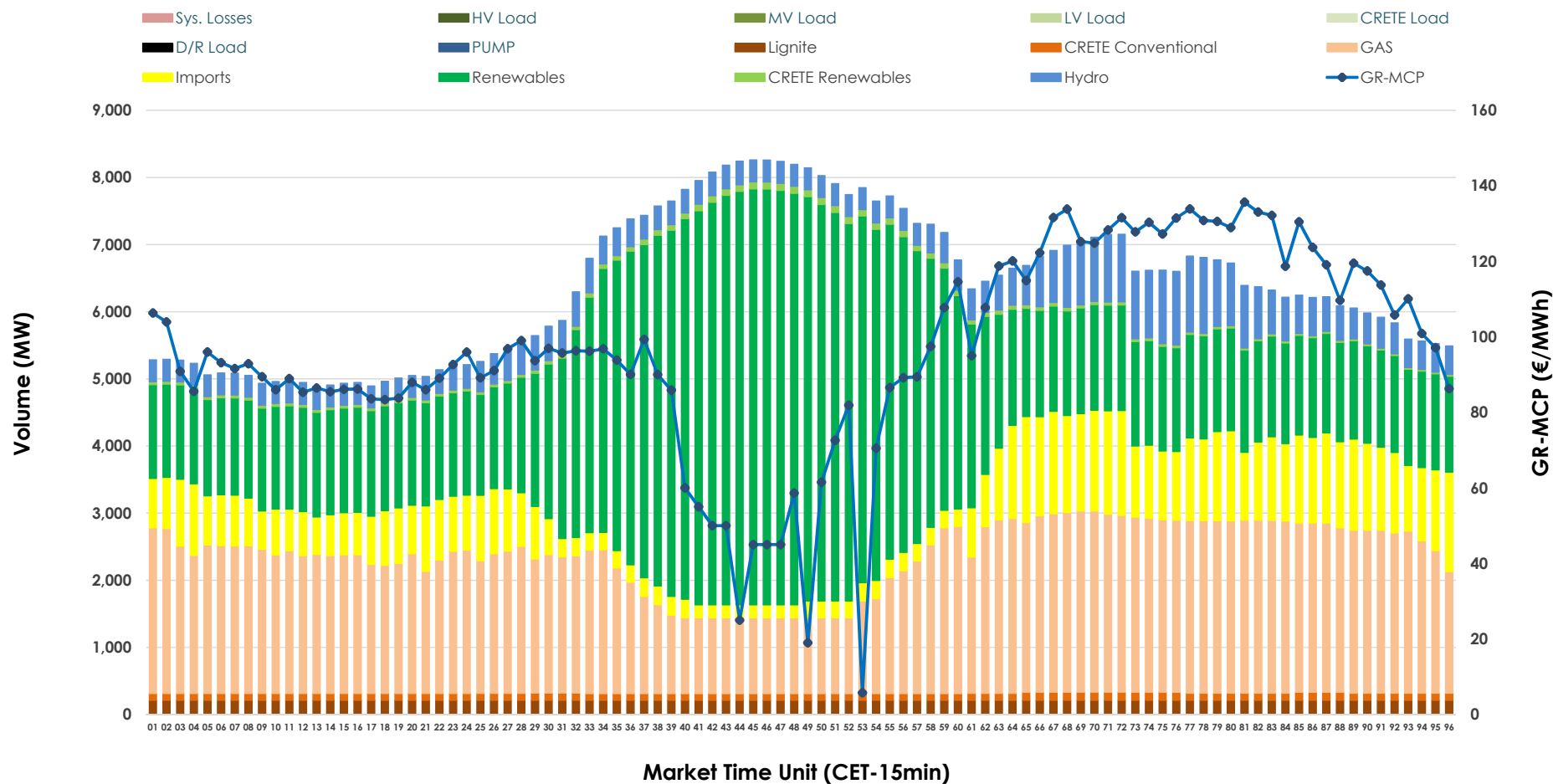


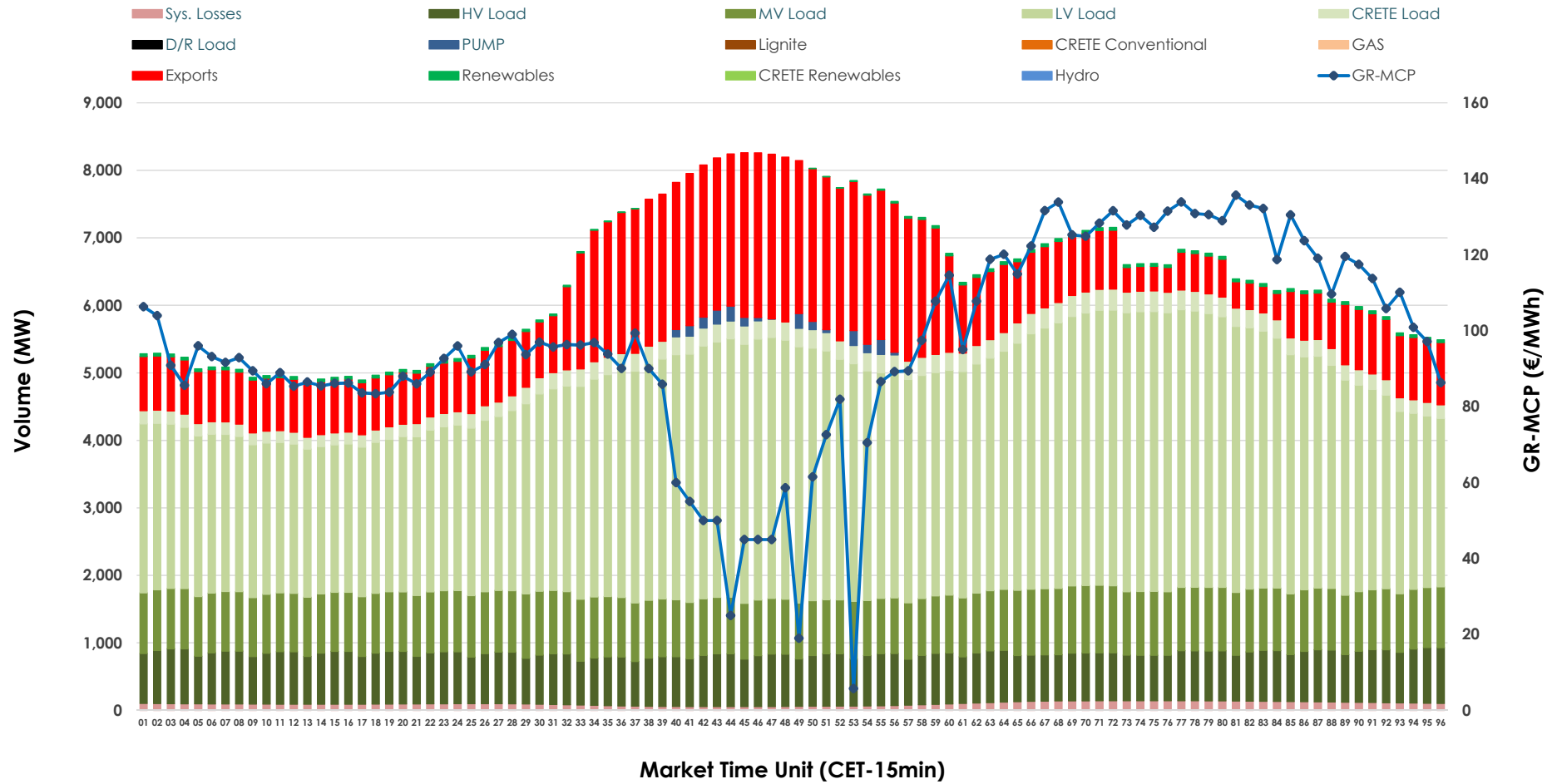


## Day-Ahead Market Outlook

30.11.2025 Day-Ahead Market - Sell



### 30.11.2025 Day-Ahead Market - Buy



### GR Bidding Zone Weekly Figures

Delivery Day	24.11	25.11	26.11	27.11	28.11	29.11	30.11
	↑ 70%	↗ 3%	↘ -16%	↗ 8%	↗ 1%	↘ 7%	↘ -13%
Avg.MCP (€/MWh)	108.33	111.87	94.31	101.80	103.26	110.88	96.32
Max.MCP (€/MWh)	317.46	347.85	316.34	182.92	163.48	149.30	135.68
Min.MCP (€/MWh)	0.00	25.55	0.01	51.81	61.47	83.71	5.75
	↗ 4%	↗ 11%	↗ 6%	↘ -3%	↘ -6%	↘ -8%	↘ -1%
Tot.Vol(GWh)	312.84	345.84	367.86	358.25	338.12	310.78	306.78

### Trades by Order Type

Delivery Day		24.11	25.11	26.11	27.11	28.11	29.11	30.11	
Ord Price Type		Sell & Buy Trades in (GWh) per Price Type							(%)
PPT	(S)	54.793	57.792	73.936	72.053	63.160	49.819	52.633	34.31%
HBD	(S)	61.211	70.251	72.262	66.659	62.070	54.805	55.196	35.98%
BLK	(S)	36.431	42.499	37.734	39.989	42.256	34.196	33.808	22.04%
CPL	(S)	3.982	2.378	0.000	0.425	1.574	16.572	11.754	7.66%
PPT	(B)	14.395	14.939	15.188	15.538	13.589	12.650	13.301	8.67%
HBD	(B)	129.770	132.009	135.790	134.346	134.322	129.330	121.715	79.35%
BLK	(B)	0.000	0.000	0.000	0.000	0.000	0.000	0.000	0.00%
CPL	(B)	12.253	25.971	32.954	29.243	21.148	13.411	18.373	11.98%
		Sell & Buy Orders Traded per Price Type							(%)
PPT	(S)	1754	1748	1747	1747	1776	1745	1698	40.83%
HBD	(S)	2462	2719	2477	2542	2682	2686	2448	58.86%
BLK	(S)	17	15	16	13	14	16	13	0.31%
PPT	(B)	2340	2336	2339	2330	2227	2223	2268	35.34%
HBD	(B)	4289	4121	4271	4151	4056	4141	4149	64.66%
BLK	(B)	0	0	0	0	0	0	0	0.00%

MCP	Market Clearing Price (€/MWh)
PPT	Priority Price-Taking
HBD	Hybrid
BLK	Block
CPL	Market Coupling Flow

### Trade's Volume Mix

		Sell - MWh	Buy - MWh	
Lignite	(3.3%)	5,088	0	(0.0%)
Crete Conv.	(1.6%)	2,529	0	(0.0%)
Gas	(32.4%)	49,770	0	(0.0%)
Hydro	(7.8%)	11,981	0	(0.0%)
Imports	(12.3%)	18,866		
RES	(41.6%)	63,815	738	(0.5%)
Crete RES	(0.9%)	1,342	0	(0.0%)
HV Load	(0.0%)	0	17,763	(11.6%)
MV Load	(0.0%)	0	21,424	(14.0%)
LV Load	(0.0%)	0	76,541	(49.9%)
Crete Load	(0.0%)	0	5,874	(3.8%)
Pumping	(0.0%)	0	506	(0.3%)
Exports			28,152	(18.4%)
Sys.Losses	(0.0%)	0	2,392	(1.6%)
D/R Load	(0.0%)	0	0	(0.0%)

