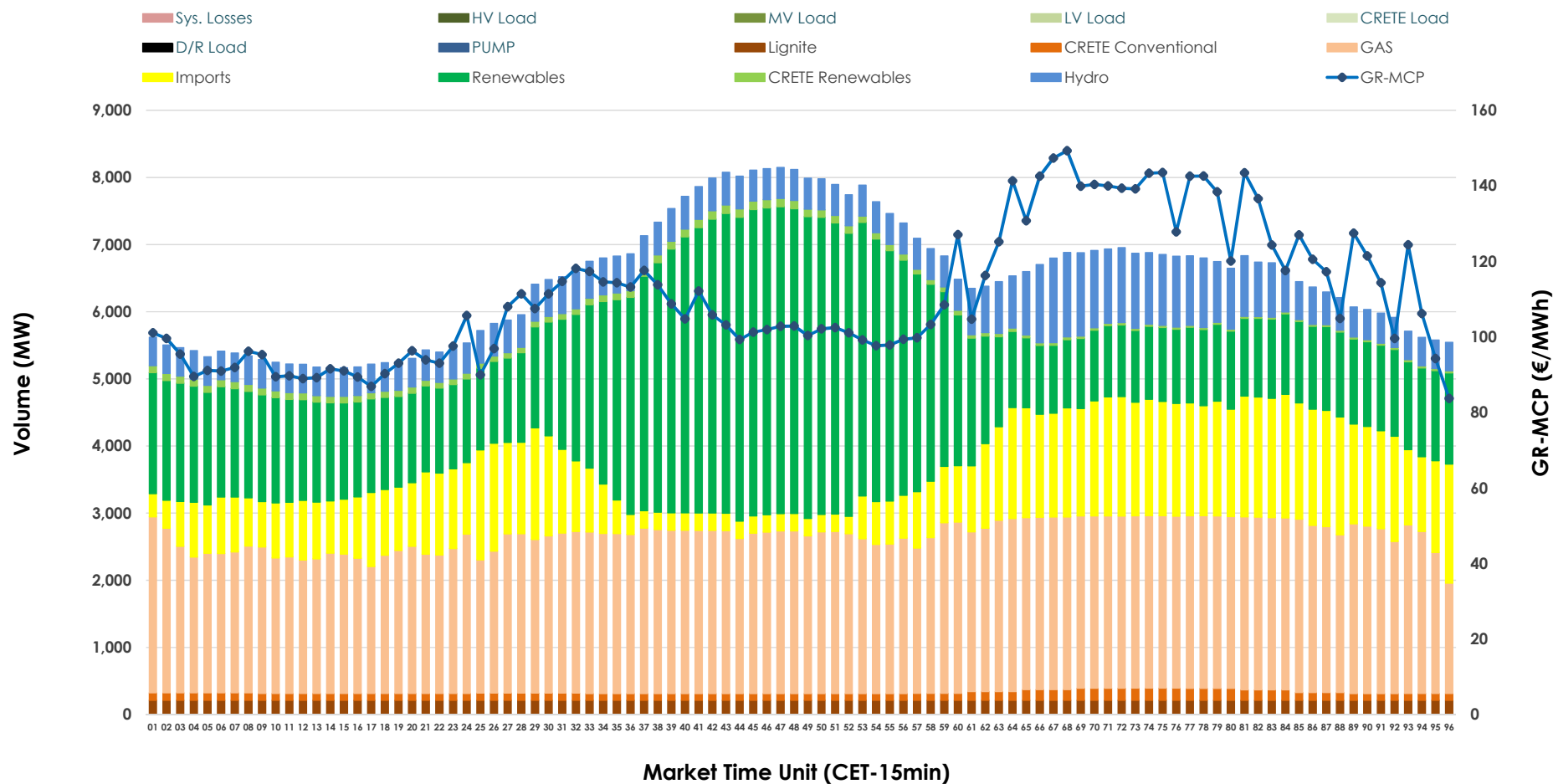


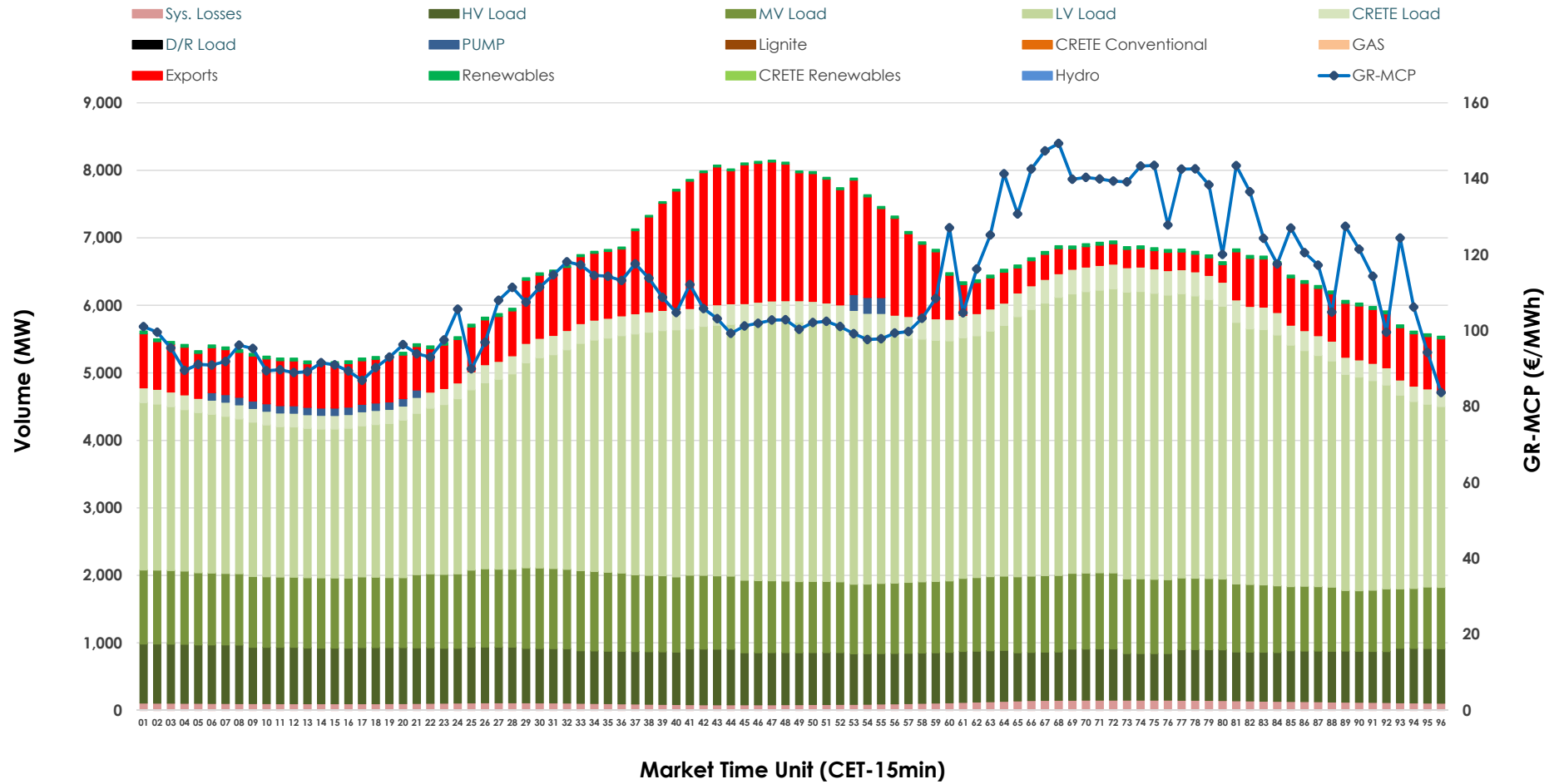


## Day-Ahead Market Outlook

29.11.2025 Day-Ahead Market - Sell



## 29.11.2025 Day-Ahead Market - Buy



### GR Bidding Zone Weekly Figures

Delivery Day	23.11	24.11	25.11	26.11	27.11	28.11	29.11
	⬇️ -11%	⬆️ 70%	⬆️ 3%	⬇️ -16%	⬆️ 8%	⬆️ 1%	⬆️ 7%
Avg.MCP (€/MWh)	63.81	108.33	111.87	94.31	101.80	103.26	110.88
Max.MCP (€/MWh)	141.82	317.46	347.85	316.34	182.92	163.48	149.30
Min.MCP (€/MWh)	-4.50	0.00	25.55	0.01	51.81	61.47	83.71
	⬇️ -13%	⬆️ 4%	⬆️ 11%	⬆️ 6%	⬇️ -3%	⬇️ -6%	⬇️ -8%
Tot.Vol(GWh)	301.09	312.84	345.84	367.86	358.25	338.12	310.78

### Trades by Order Type

Delivery Day		23.11	24.11	25.11	26.11	27.11	28.11	29.11	
Ord Price Type		Sell & Buy Trades in (GWh) per Price Type							(%)
PPT	(S)	67.988	54.793	57.792	73.936	72.053	63.160	49.819	32.06%
HBD	(S)	55.166	61.211	70.251	72.262	66.659	62.070	54.805	35.27%
BLK	(S)	27.332	36.431	42.499	37.734	39.989	42.256	34.196	22.01%
CPL	(S)	0.058	3.982	2.378	0.000	0.425	1.574	16.572	10.66%
PPT	(B)	14.398	14.395	14.939	15.188	15.538	13.589	12.650	8.14%
HBD	(B)	116.039	129.770	132.009	135.790	134.346	134.322	129.330	83.23%
BLK	(B)	0.000	0.000	0.000	0.000	0.000	0.000	0.000	0.00%
CPL	(B)	20.107	12.253	25.971	32.954	29.243	21.148	13.411	8.63%
		Sell & Buy Orders Traded per Price Type							(%)
PPT	(S)	1802	1754	1748	1747	1747	1776	1745	39.24%
HBD	(S)	2054	2462	2719	2477	2542	2682	2686	60.40%
BLK	(S)	11	17	15	16	13	14	16	0.36%
PPT	(B)	2358	2340	2336	2339	2330	2227	2223	34.93%
HBD	(B)	4390	4289	4121	4271	4151	4056	4141	65.07%
BLK	(B)	0	0	0	0	0	0	0	0.00%

<b>MCP</b>	Market Clearing Price (€/MWh)
<b>PPT</b>	Priority Price-Taking
<b>HBD</b>	Hybrid
<b>BLK</b>	Block
<b>CPL</b>	Market Coupling Flow

### Trade's Volume Mix

		Sell - MWh	Buy - MWh	
Lignite	(3.3%)	5,088	0	(0.0%)
Crete Conv.	(1.8%)	2,848	0	(0.0%)
Gas	(36.3%)	56,433	0	(0.0%)
Hydro	(9.2%)	14,256	0	(0.0%)
Imports	(16.4%)	25,507		
RES	(31.8%)	49,468	878	(0.6%)
Crete RES	(1.2%)	1,792	0	(0.0%)
HV Load	(0.0%)	0	18,808	(12.1%)
MV Load	(0.0%)	0	25,577	(16.5%)
LV Load	(0.0%)	0	78,885	(50.8%)
Crete Load	(0.0%)	0	6,865	(4.4%)
Pumping	(0.0%)	0	616	(0.4%)
Exports			21,043	(13.5%)
Sys.Losses	(0.0%)	0	2,720	(1.8%)
D/R Load	(0.0%)	0	0	(0.0%)

