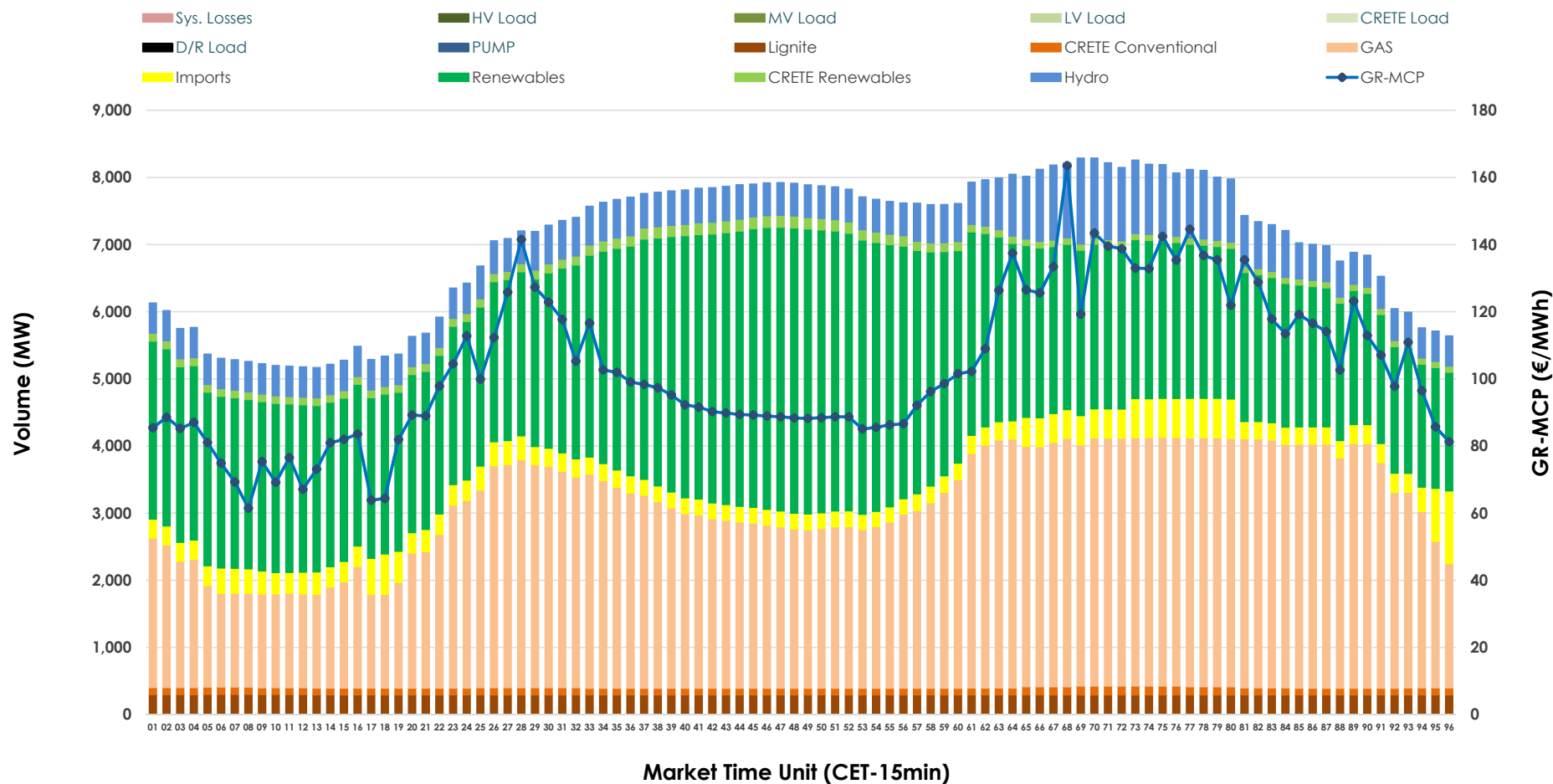


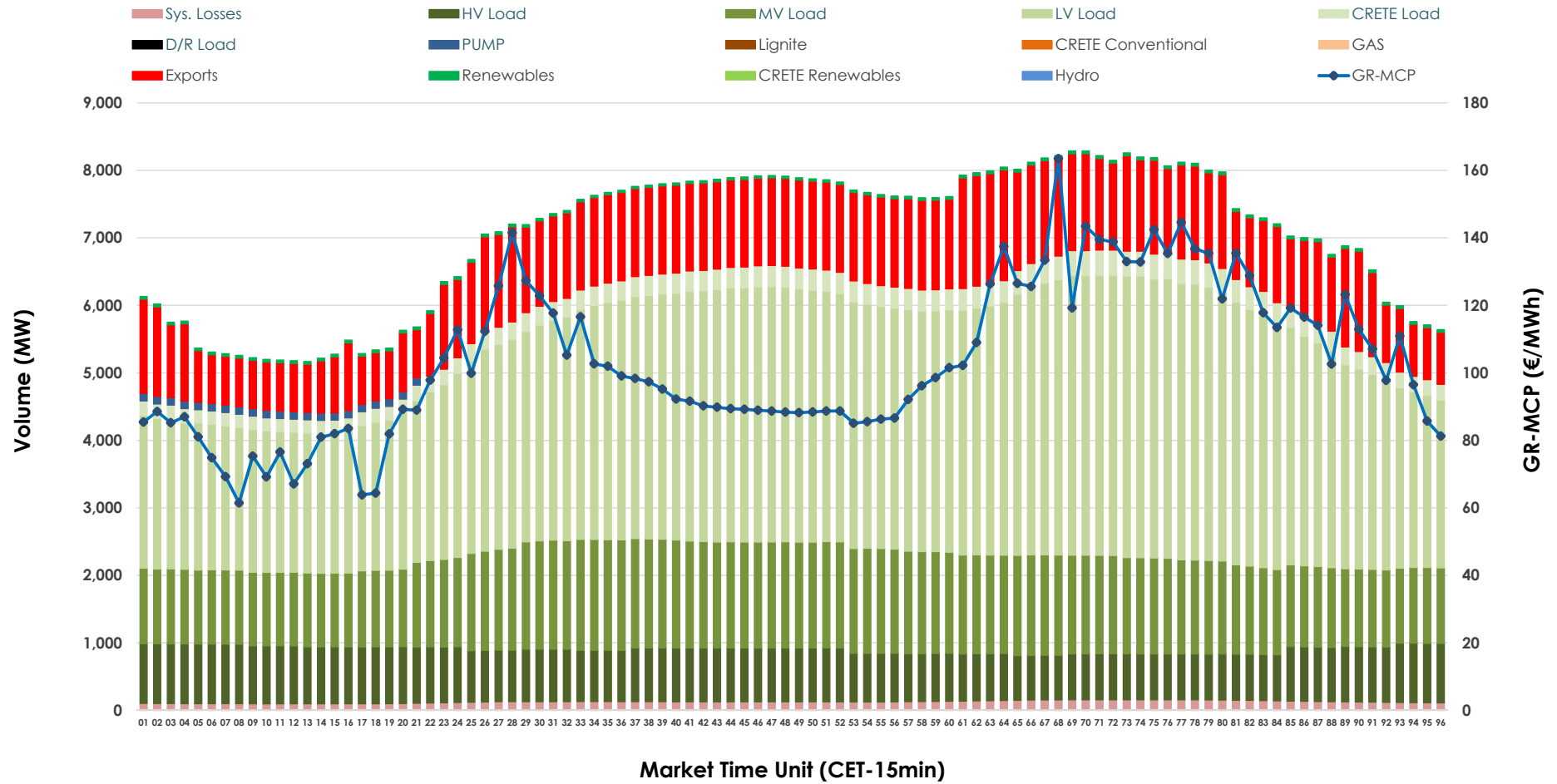


Day-Ahead Market Outlook

28.11.2025 Day-Ahead Market - Sell



28.11.2025 Day-Ahead Market - Buy



GR Bidding Zone Weekly Figures

Delivery Day	22.11	23.11	24.11	25.11	26.11	27.11	28.11
	👇 -18%	👇 -11%	👆 70%	👆 3%	👇 -16%	👆 8%	👆 1%
Avg.MCP (€/MWh)	71.77	63.81	108.33	111.87	94.31	101.80	103.26
Max.MCP (€/MWh)	111.59	141.82	317.46	347.85	316.34	182.92	163.48
Min.MCP (€/MWh)	0.00	-4.50	0.00	25.55	0.01	51.81	61.47
	👇 -5%	👇 -13%	👆 4%	👆 11%	👆 6%	👇 -3%	👇 -6%
Tot.Vol(GWh)	346.43	301.09	312.84	345.84	367.86	358.25	338.12

Trades by Order Type

Delivery Day		22.11	23.11	24.11	25.11	26.11	27.11	28.11	
Ord Price Type		Sell & Buy Trades in (GWh) per Price Type							(%)
PPT	(S)	64.620	67.988	54.793	57.792	73.936	72.053	63.160	37.36%
HBD	(S)	69.664	55.166	61.211	70.251	72.262	66.659	62.070	36.71%
BLK	(S)	38.932	27.332	36.431	42.499	37.734	39.989	42.256	24.99%
CPL	(S)	0.000	0.058	3.982	2.378	0.000	0.425	1.574	0.93%
PPT	(B)	14.230	14.398	14.395	14.939	15.188	15.538	13.589	8.04%
HBD	(B)	119.587	116.039	129.770	132.009	135.790	134.346	134.322	79.45%
BLK	(B)	0.000	0.000	0.000	0.000	0.000	0.000	0.000	0.00%
CPL	(B)	39.399	20.107	12.253	25.971	32.954	29.243	21.148	12.51%
		Sell & Buy Orders Traded per Price Type							(%)
PPT	(S)	1639	1802	1754	1748	1747	1747	1776	39.71%
HBD	(S)	2203	2054	2462	2719	2477	2542	2682	59.97%
BLK	(S)	14	11	17	15	16	13	14	0.31%
PPT	(B)	2355	2358	2340	2336	2339	2330	2227	35.44%
HBD	(B)	4333	4390	4289	4121	4271	4151	4056	64.56%
BLK	(B)	0	0	0	0	0	0	0	0.00%

MCP	Market Clearing Price (€/MWh)
PPT	Priority Price-Taking
HBD	Hybrid
BLK	Block
CPL	Market Coupling Flow

Trade's Volume Mix

		Sell - MWh	Buy - MWh	
Lignite	(4.2%)	7,024	0	(0.0%)
Crete Conv.	(1.5%)	2,553	0	(0.0%)
Gas	(39.5%)	66,801	0	(0.0%)
Hydro	(8.6%)	14,572	0	(0.0%)
Imports	(4.8%)	8,098		
RES	(39.7%)	67,071	934	(0.6%)
Crete RES	(1.7%)	2,941	0	(0.0%)
HV Load	(0.0%)	0	18,651	(11.0%)
MV Load	(0.0%)	0	32,916	(19.5%)
LV Load	(0.0%)	0	77,642	(45.9%)
Crete Load	(0.0%)	0	6,828	(4.0%)
Pumping	(0.0%)	0	578	(0.3%)
Exports			28,468	(16.8%)
Sys.Losses	(0.0%)	0	3,043	(1.8%)
D/R Load	(0.0%)	0	0	(0.0%)

