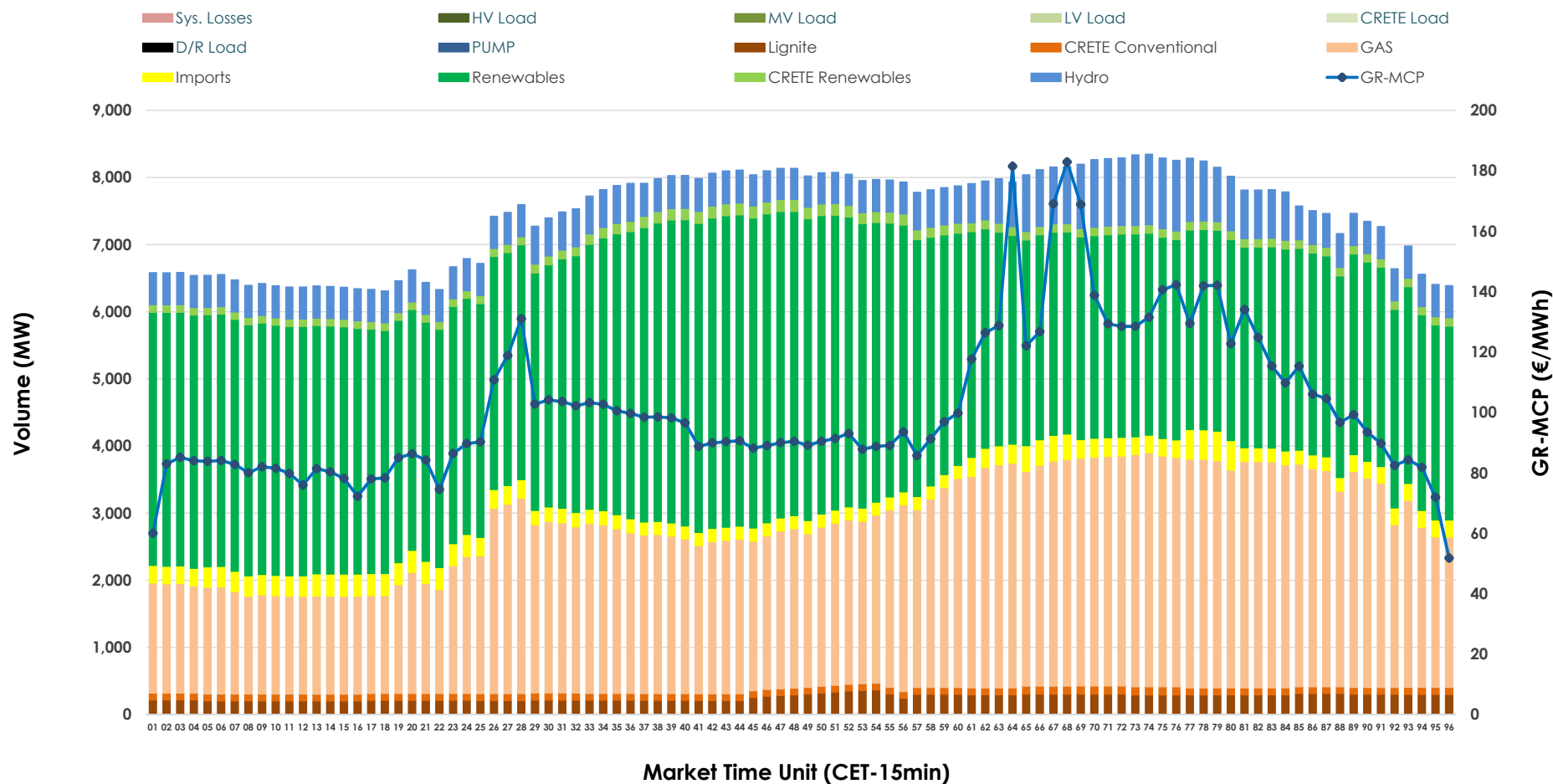


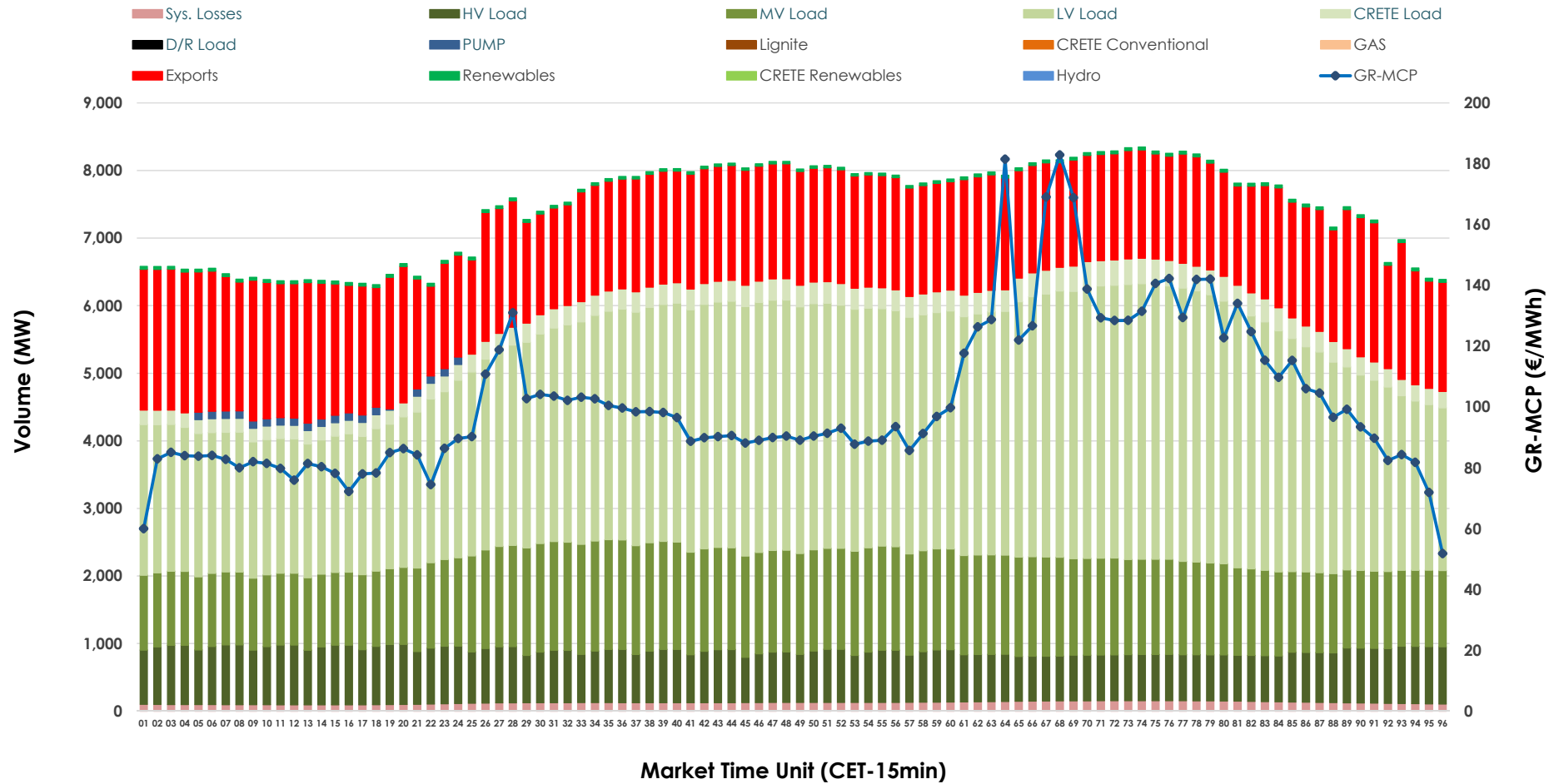


Day-Ahead Market Outlook

27.11.2025 Day-Ahead Market - Sell



27.11.2025 Day-Ahead Market - Buy



GR Bidding Zone Weekly Figures

Delivery Day	21.11	22.11	23.11	24.11	25.11	26.11	27.11
	👇 -10%	👇 -18%	👇 -11%	👈 70%	👈 3%	👇 -16%	👈 8%
Avg.MCP (€/MWh)	87.24	71.77	63.81	108.33	111.87	94.31	101.80
Max.MCP (€/MWh)	175.90	111.59	141.82	317.46	347.85	316.34	182.92
Min.MCP (€/MWh)	0.00	0.00	-4.50	0.00	25.55	0.01	51.81
	👈 2%	👇 -5%	👇 -13%	👈 4%	👈 11%	👈 6%	👇 -3%
Tot.Vol(GWh)	364.05	346.43	301.09	312.84	345.84	367.86	358.25

Trades by Order Type

Delivery Day		21.11	22.11	23.11	24.11	25.11	26.11	27.11	
Ord Price Type		Sell & Buy Trades in (GWh) per Price Type							(%)
PPT	(S)	68.073	64.620	67.988	54.793	57.792	73.936	72.053	40.22%
HBD	(S)	70.544	69.664	55.166	61.211	70.251	72.262	66.659	37.21%
BLK	(S)	43.407	38.932	27.332	36.431	42.499	37.734	39.989	22.32%
CPL	(S)	0.000	0.000	0.058	3.982	2.378	0.000	0.425	0.24%
PPT	(B)	15.279	14.230	14.398	14.395	14.939	15.188	15.538	8.67%
HBD	(B)	124.975	119.587	116.039	129.770	132.009	135.790	134.346	75.00%
BLK	(B)	0.000	0.000	0.000	0.000	0.000	0.000	0.000	0.00%
CPL	(B)	41.769	39.399	20.107	12.253	25.971	32.954	29.243	16.33%
		Sell & Buy Orders Traded per Price Type							(%)
PPT	(S)	1661	1639	1802	1754	1748	1747	1747	40.61%
HBD	(S)	2306	2203	2054	2462	2719	2477	2542	59.09%
BLK	(S)	15	14	11	17	15	16	13	0.30%
PPT	(B)	2351	2355	2358	2340	2336	2339	2330	35.95%
HBD	(B)	4162	4333	4390	4289	4121	4271	4151	64.05%
BLK	(B)	0	0	0	0	0	0	0	0.00%

MCP	Market Clearing Price (€/MWh)
PPT	Priority Price-Taking
HBD	Hybrid
BLK	Block
CPL	Market Coupling Flow

Trade's Volume Mix

		Sell - MWh	Buy - MWh	
Lignite	(3.5%)	6,218	0	(0.0%)
Crete Conv.	(1.4%)	2,504	0	(0.0%)
Gas	(33.8%)	60,591	0	(0.0%)
Hydro	(7.8%)	13,948	0	(0.0%)
Imports	(3.5%)	6,283		
RES	(48.2%)	86,338	943	(0.5%)
Crete RES	(1.8%)	3,245	0	(0.0%)
HV Load	(0.0%)	0	18,420	(10.3%)
MV Load	(0.0%)	0	32,433	(18.1%)
LV Load	(0.0%)	0	75,511	(42.2%)
Crete Load	(0.0%)	0	6,917	(3.9%)
Pumping	(0.0%)	0	499	(0.3%)
Exports			41,415	(23.1%)
Sys.Losses	(0.0%)	0	2,988	(1.7%)
D/R Load	(0.0%)	0	0	(0.0%)

