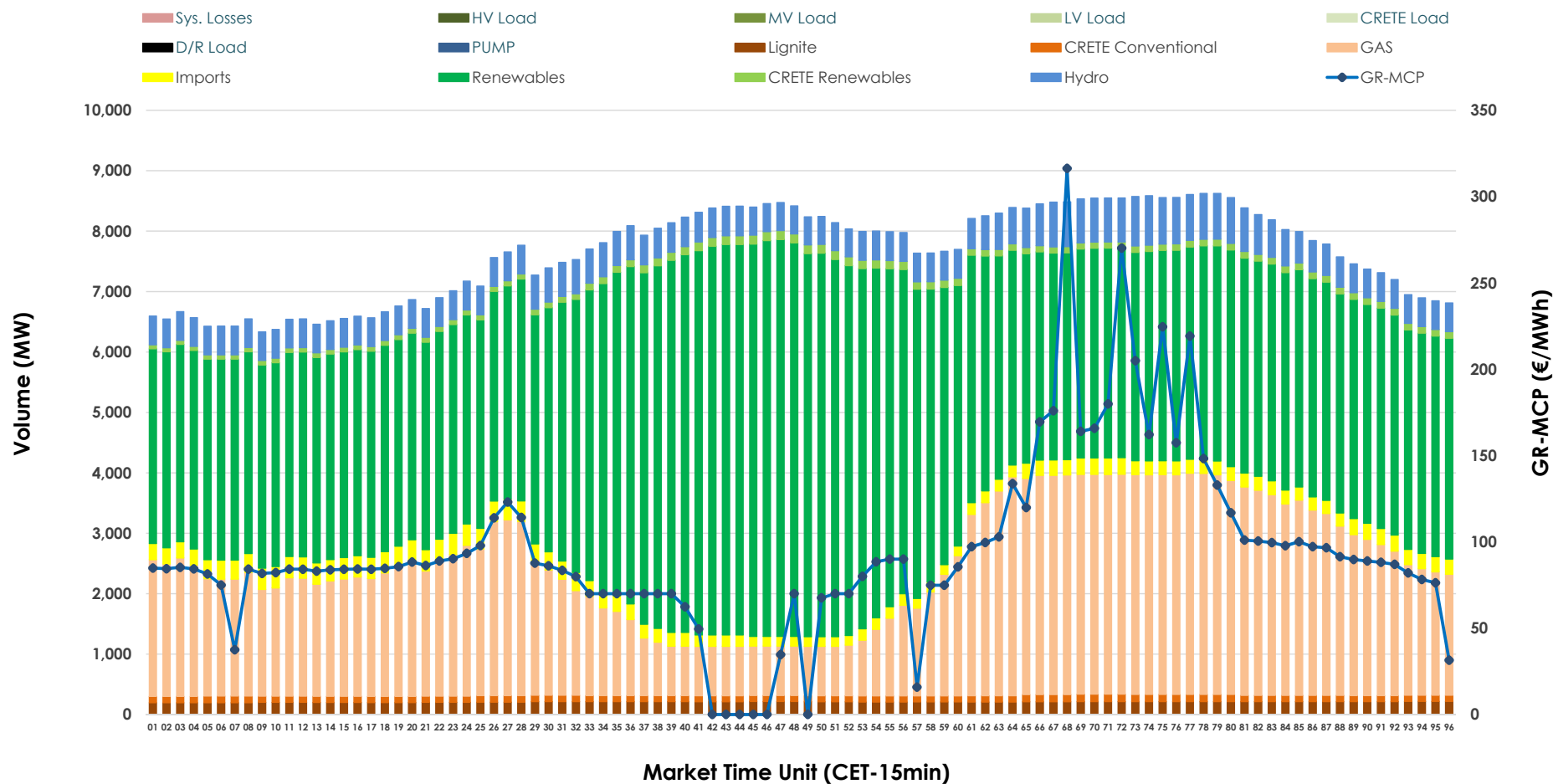


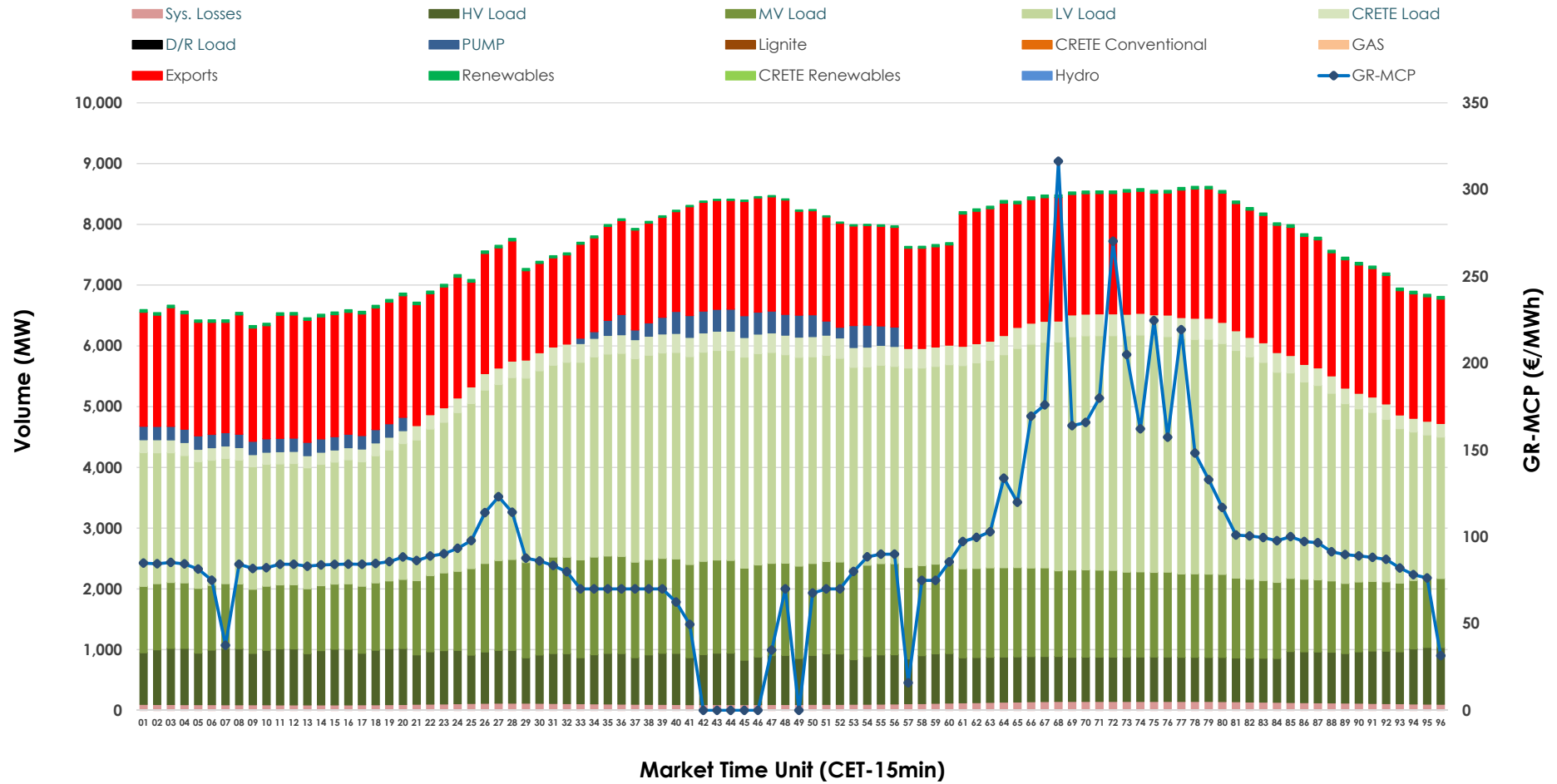


Day-Ahead Market Outlook

26.11.2025 Day-Ahead Market - Sell



26.11.2025 Day-Ahead Market - Buy



GR Bidding Zone Weekly Figures

Delivery Day	20.11	21.11	22.11	23.11	24.11	25.11	26.11
	📉 -15%	📉 -10%	📉 -18%	📉 -11%	📈 70%	📈 3%	📉 -16%
Avg.MCP (€/MWh)	97.37	87.24	71.77	63.81	108.33	111.87	94.31
Max.MCP (€/MWh)	191.24	175.90	111.59	141.82	317.46	347.85	316.34
Min.MCP (€/MWh)	0.00	0.00	0.00	-4.50	0.00	25.55	0.01
	➡ 0%	↗ 2%	📉 -5%	📉 -13%	↗ 4%	↗ 11%	↗ 6%
Tot.Vol(GWh)	355.75	364.05	346.43	301.09	312.84	345.84	367.86

Trades by Order Type

Delivery Day		20.11	21.11	22.11	23.11	24.11	25.11	26.11	
Ord Price Type		Sell & Buy Trades in (GWh) per Price Type							(%)
PPT	(S)	59.902	68.073	64.620	67.988	54.793	57.792	73.936	40.20%
HBD	(S)	71.679	70.544	69.664	55.166	61.211	70.251	72.262	39.29%
BLK	(S)	44.931	43.407	38.932	27.332	36.431	42.499	37.734	20.52%
CPL	(S)	1.362	0.000	0.000	0.058	3.982	2.378	0.000	0.00%
PPT	(B)	15.348	15.279	14.230	14.398	14.395	14.939	15.188	8.26%
HBD	(B)	125.148	124.975	119.587	116.039	129.770	132.009	135.790	73.83%
BLK	(B)	0.000	0.000	0.000	0.000	0.000	0.000	0.000	0.00%
CPL	(B)	37.378	41.769	39.399	20.107	12.253	25.971	32.954	17.92%
		Sell & Buy Orders Traded per Price Type							(%)
PPT	(S)	1496	1661	1639	1802	1754	1748	1747	41.20%
HBD	(S)	2417	2306	2203	2054	2462	2719	2477	58.42%
BLK	(S)	15	15	14	11	17	15	16	0.38%
PPT	(B)	2357	2351	2355	2358	2340	2336	2339	35.39%
HBD	(B)	4138	4162	4333	4390	4289	4121	4271	64.61%
BLK	(B)	0	0	0	0	0	0	0	0.00%

MCP	Market Clearing Price (€/MWh)
PPT	Priority Price-Taking
HBD	Hybrid
BLK	Block
CPL	Market Coupling Flow

Trade's Volume Mix

		Sell - MWh	Buy - MWh	
Lignite	(2.7%)	4,988	0	(0.0%)
Crete Conv.	(1.4%)	2,540	0	(0.0%)
Gas	(29.2%)	53,760	0	(0.0%)
Hydro	(7.1%)	12,983	0	(0.0%)
Imports	(3.3%)	6,135		
RES	(54.9%)	100,994	852	(0.5%)
Crete RES	(1.4%)	2,532	0	(0.0%)
HV Load	(0.0%)	0	19,577	(10.6%)
MV Load	(0.0%)	0	32,303	(17.6%)
LV Load	(0.0%)	0	73,078	(39.7%)
Crete Load	(0.0%)	0	6,894	(3.7%)
Pumping	(0.0%)	0	2,886	(1.6%)
Exports			45,605	(24.8%)
Sys.Losses	(0.0%)	0	2,738	(1.5%)
D/R Load	(0.0%)	0	0	(0.0%)

