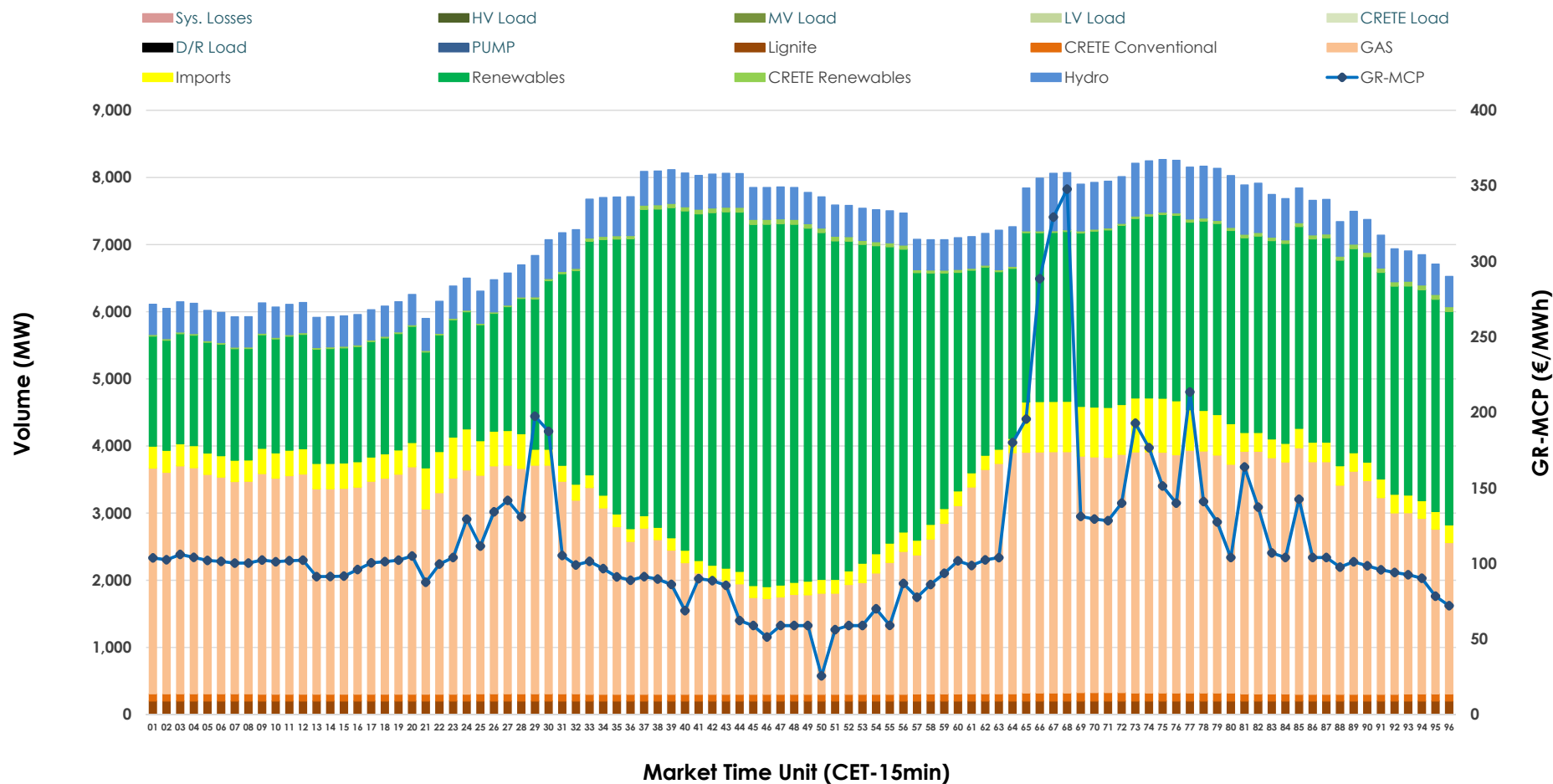


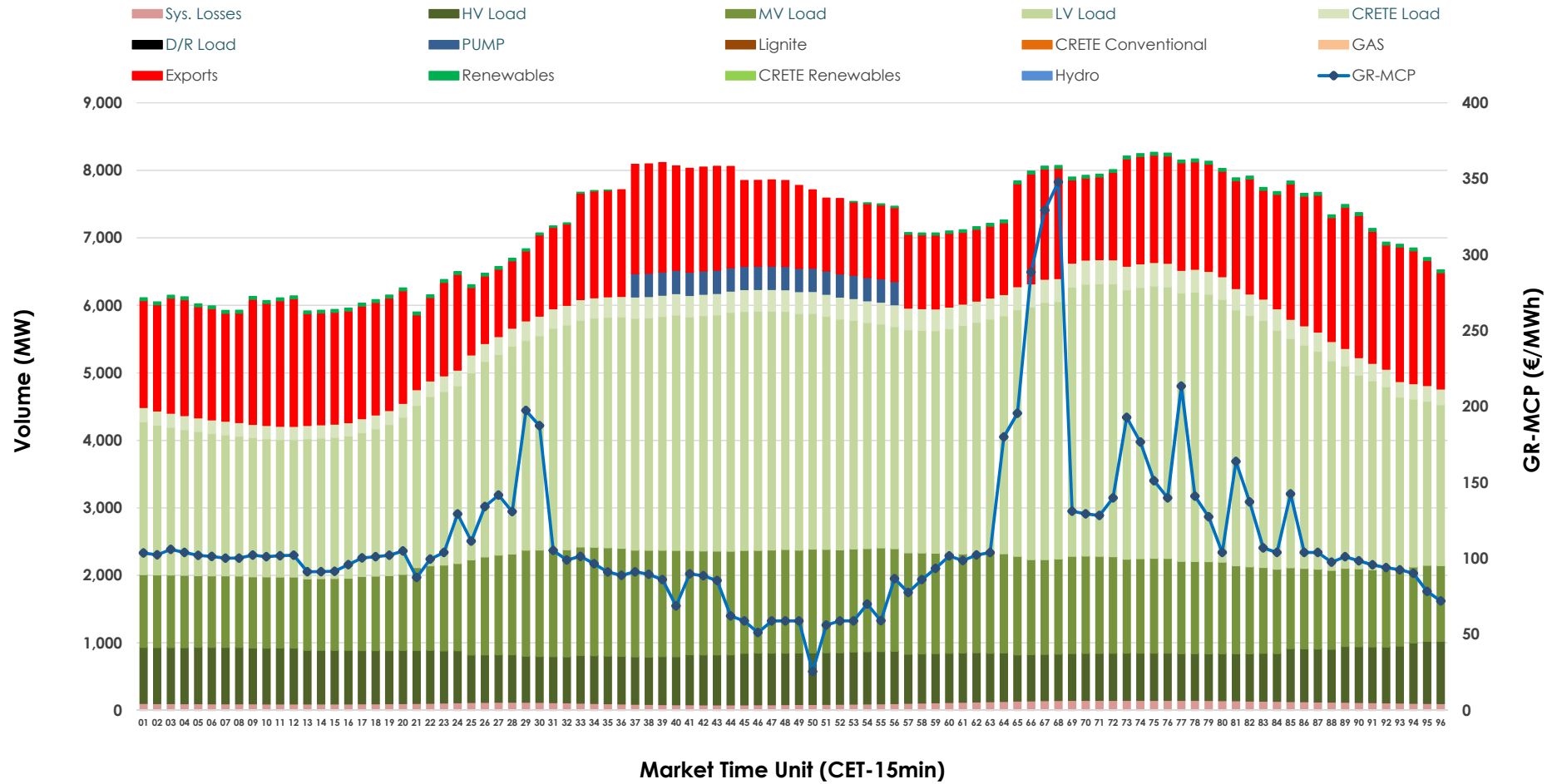


## Day-Ahead Market Outlook

25.11.2025 Day-Ahead Market - Sell



## 25.11.2025 Day-Ahead Market - Buy



### GR Bidding Zone Weekly Figures

Delivery Day	19.11	20.11	21.11	22.11	23.11	24.11	25.11
	↗ 10%	↘ -15%	↘ -10%	↘ -18%	↘ -11%	↗ 70%	↗ 3%
Avg.MCP (€/MWh)	114.26	97.37	87.24	71.77	63.81	108.33	111.87
Max.MCP (€/MWh)	207.99	191.24	175.90	111.59	141.82	317.46	347.85
Min.MCP (€/MWh)	81.47	0.00	0.00	0.00	-4.50	0.00	25.55
	↗ 2%	➡ 0%	↗ 2%	↘ -5%	↘ -13%	↗ 4%	↗ 11%
Tot.Vol(GWh)	356.60	355.75	364.05	346.43	301.09	312.84	345.84

### Trades by Order Type

Delivery Day		19.11	20.11	21.11	22.11	23.11	24.11	25.11	
Ord Price Type		Sell & Buy Trades in (GWh) per Price Type							(%)
PPT	(S)	55.732	59.902	68.073	64.620	67.988	54.793	57.792	33.42%
HBD	(S)	68.386	71.679	70.544	69.664	55.166	61.211	70.251	40.63%
BLK	(S)	52.135	44.931	43.407	38.932	27.332	36.431	42.499	24.58%
CPL	(S)	2.047	1.362	0.000	0.000	0.058	3.982	2.378	1.37%
PPT	(B)	15.043	15.348	15.279	14.230	14.398	14.395	14.939	8.64%
HBD	(B)	128.133	125.148	124.975	119.587	116.039	129.770	132.009	76.34%
BLK	(B)	0.000	0.000	0.000	0.000	0.000	0.000	0.000	0.00%
CPL	(B)	35.124	37.378	41.769	39.399	20.107	12.253	25.971	15.02%
		Sell & Buy Orders Traded per Price Type							(%)
PPT	(S)	1496	1496	1661	1639	1802	1754	1748	39.00%
HBD	(S)	2647	2417	2306	2203	2054	2462	2719	60.66%
BLK	(S)	22	15	15	14	11	17	15	0.33%
PPT	(B)	2313	2357	2351	2355	2358	2340	2336	36.18%
HBD	(B)	4084	4138	4162	4333	4390	4289	4121	63.82%
BLK	(B)	0	0	0	0	0	0	0	0.00%

<b>MCP</b>	Market Clearing Price (€/MWh)
<b>PPT</b>	Priority Price-Taking
<b>HBD</b>	Hybrid
<b>BLK</b>	Block
<b>CPL</b>	Market Coupling Flow

### Trade's Volume Mix

		Sell - MWh	Buy - MWh	
Lignite	(2.8%)	4,848	0	(0.0%)
Crete Conv.	(1.5%)	2,548	0	(0.0%)
Gas	(40.4%)	69,827	0	(0.0%)
Hydro	(7.5%)	12,918	0	(0.0%)
Imports	(5.1%)	8,798		
RES	(42.2%)	72,925	724	(0.4%)
Crete RES	(0.6%)	1,055	0	(0.0%)
HV Load	(0.0%)	0	18,135	(10.5%)
MV Load	(0.0%)	0	32,297	(18.7%)
LV Load	(0.0%)	0	74,756	(43.2%)
Crete Load	(0.0%)	0	6,830	(3.9%)
Pumping	(0.0%)	0	1,725	(1.0%)
Exports			35,759	(20.7%)
Sys.Losses	(0.0%)	0	2,694	(1.6%)
D/R Load	(0.0%)	0	0	(0.0%)

