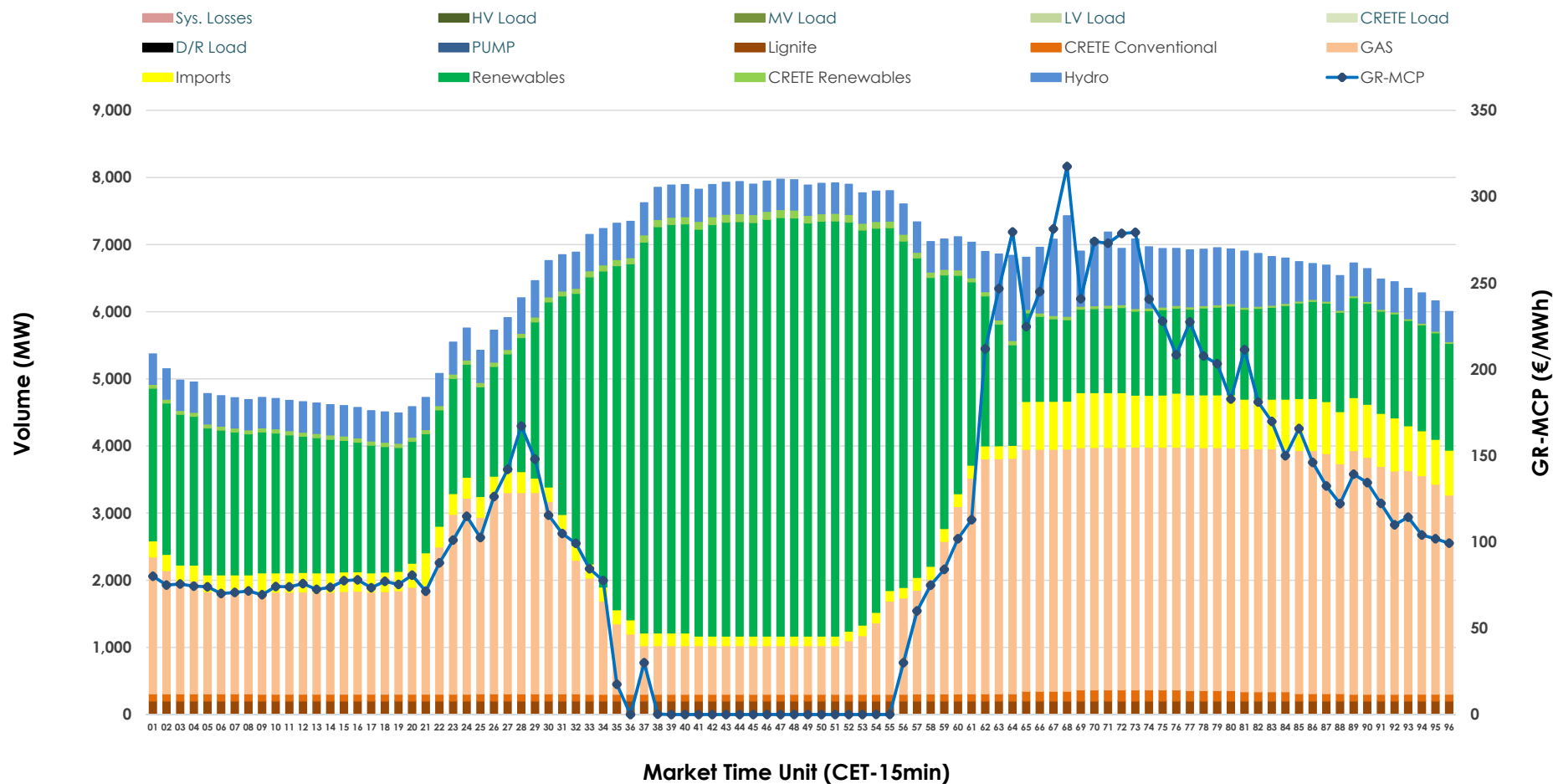


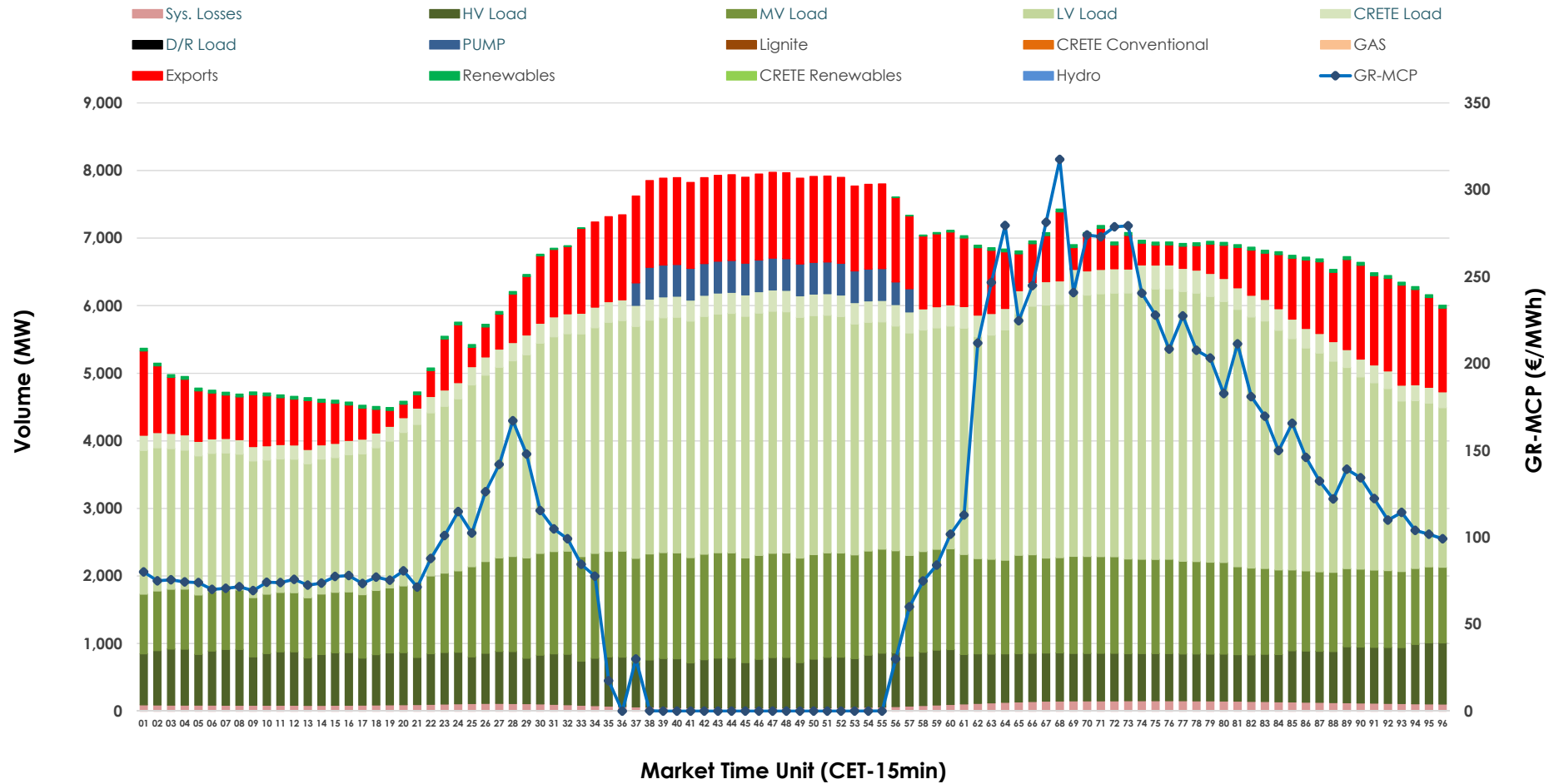


Day-Ahead Market Outlook

24.11.2025 Day-Ahead Market - Sell



24.11.2025 Day-Ahead Market - Buy



GR Bidding Zone Weekly Figures

Delivery Day	18.11	19.11	20.11	21.11	22.11	23.11	24.11
	↗ 18%	↗ 10%	↘ -15%	↘ -10%	↘ -18%	↘ -11%	↗ 70%
Avg.MCP (€/MWh)	104.00	114.26	97.37	87.24	71.77	63.81	108.33
Max.MCP (€/MWh)	161.60	207.99	191.24	175.90	111.59	141.82	317.46
Min.MCP (€/MWh)	77.23	81.47	0.00	0.00	0.00	-4.50	0.00
	↗ 7%	↗ 2%	➡ 0%	↗ 2%	↘ -5%	↘ -13%	↗ 4%
Tot.Vol(GWh)	350.74	356.60	355.75	364.05	346.43	301.09	312.84

Trades by Order Type

Delivery Day		18.11	19.11	20.11	21.11	22.11	23.11	24.11	
Ord Price Type		Sell & Buy Trades in (GWh) per Price Type							(%)
PPT	(S)	56.861	55.732	59.902	68.073	64.620	67.988	54.793	35.03%
HBD	(S)	71.852	68.386	71.679	70.544	69.664	55.166	61.211	39.13%
BLK	(S)	45.778	52.135	44.931	43.407	38.932	27.332	36.431	23.29%
CPL	(S)	0.881	2.047	1.362	0.000	0.000	0.058	3.982	2.55%
PPT	(B)	13.153	15.043	15.348	15.279	14.230	14.398	14.395	9.20%
HBD	(B)	129.550	128.133	125.148	124.975	119.587	116.039	129.770	82.96%
BLK	(B)	0.000	0.000	0.000	0.000	0.000	0.000	0.000	0.00%
CPL	(B)	32.669	35.124	37.378	41.769	39.399	20.107	12.253	7.83%
		Sell & Buy Orders Traded per Price Type							(%)
PPT	(S)	1529	1496	1496	1661	1639	1802	1754	41.44%
HBD	(S)	2652	2647	2417	2306	2203	2054	2462	58.16%
BLK	(S)	15	22	15	15	14	11	17	0.40%
PPT	(B)	2338	2313	2357	2351	2355	2358	2340	35.30%
HBD	(B)	4287	4084	4138	4162	4333	4390	4289	64.70%
BLK	(B)	0	0	0	0	0	0	0	0.00%

MCP	Market Clearing Price (€/MWh)
PPT	Priority Price-Taking
HBD	Hybrid
BLK	Block
CPL	Market Coupling Flow

Trade's Volume Mix

		Sell - MWh	Buy - MWh	
Lignite	(3.1%)	4,848	0	(0.0%)
Crete Conv.	(1.7%)	2,731	0	(0.0%)
Gas	(35.1%)	54,878	0	(0.0%)
Hydro	(8.9%)	13,890	0	(0.0%)
Imports	(6.2%)	9,716		
RES	(44.0%)	68,756	683	(0.4%)
Crete RES	(1.0%)	1,599	0	(0.0%)
HV Load	(0.0%)	0	17,889	(11.4%)
MV Load	(0.0%)	0	31,114	(19.9%)
LV Load	(0.0%)	0	73,790	(47.2%)
Crete Load	(0.0%)	0	6,914	(4.4%)
Pumping	(0.0%)	0	2,367	(1.5%)
Exports			21,235	(13.6%)
Sys.Losses	(0.0%)	0	2,426	(1.6%)
D/R Load	(0.0%)	0	0	(0.0%)

