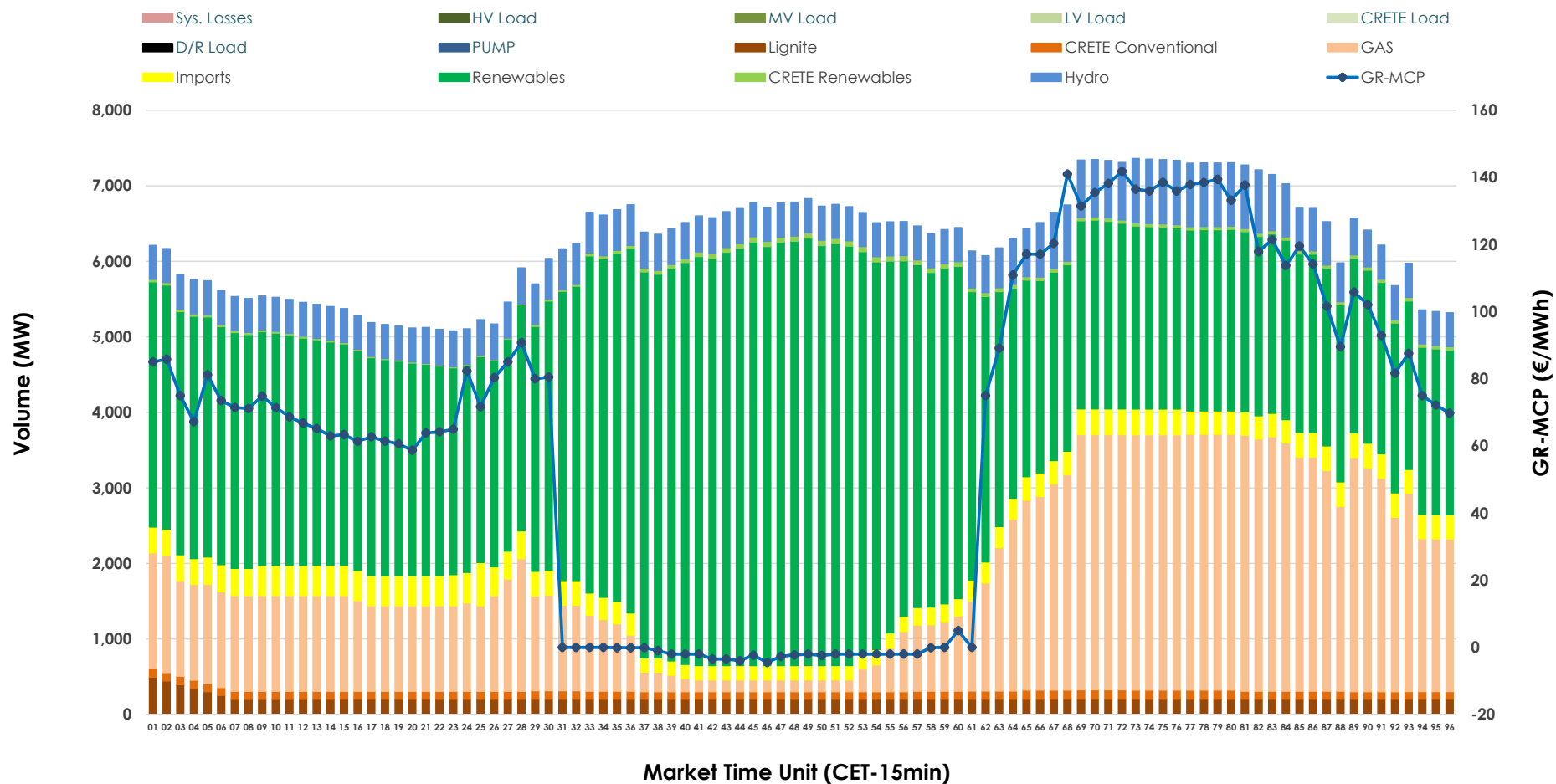


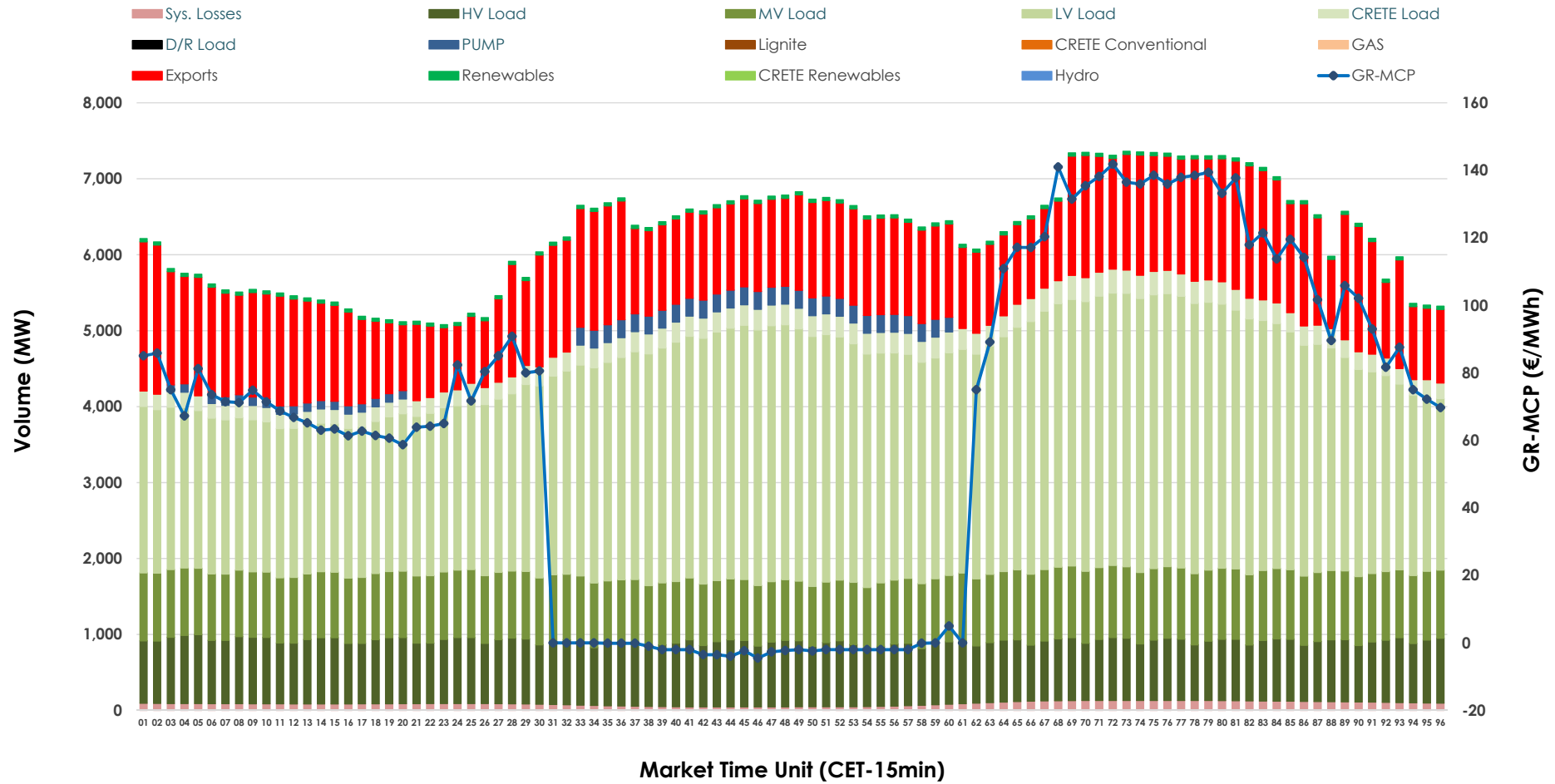


Day-Ahead Market Outlook

23.11.2025 Day-Ahead Market - Sell



23.11.2025 Day-Ahead Market - Buy



GR Bidding Zone Weekly Figures

Delivery Day	17.11	18.11	19.11	20.11	21.11	22.11	23.11
	⬇️ -2%	⬆️ 18%	⬆️ 10%	⬇️ -15%	⬇️ -10%	⬇️ -18%	⬇️ -11%
Avg.MCP (€/MWh)	88.42	104.00	114.26	97.37	87.24	71.77	63.81
Max.MCP (€/MWh)	138.67	161.60	207.99	191.24	175.90	111.59	141.82
Min.MCP (€/MWh)	0.01	77.23	81.47	0.00	0.00	0.00	-4.50
	⬆️ 14%	⬆️ 7%	⬆️ 2%	➡️ 0%	⬆️ 2%	⬇️ -5%	⬇️ -13%
Tot.Vol(GWh)	327.16	350.74	356.60	355.75	364.05	346.43	301.09

Trades by Order Type

Delivery Day		17.11	18.11	19.11	20.11	21.11	22.11	23.11	
Ord Price Type		Sell & Buy Trades in (GWh) per Price Type							(%)
PPT	(S)	50.579	56.861	55.732	59.902	68.073	64.620	67.988	45.16%
HBD	(S)	65.616	71.852	68.386	71.679	70.544	69.664	55.166	36.64%
BLK	(S)	44.829	45.778	52.135	44.931	43.407	38.932	27.332	18.16%
CPL	(S)	2.558	0.881	2.047	1.362	0.000	0.000	0.058	0.04%
PPT	(B)	13.117	13.153	15.043	15.348	15.279	14.230	14.398	9.56%
HBD	(B)	126.198	129.550	128.133	125.148	124.975	119.587	116.039	77.08%
BLK	(B)	0.000	0.000	0.000	0.000	0.000	0.000	0.000	0.00%
CPL	(B)	24.267	32.669	35.124	37.378	41.769	39.399	20.107	13.36%
		Sell & Buy Orders Traded per Price Type							(%)
PPT	(S)	1526	1529	1496	1496	1661	1639	1802	46.60%
HBD	(S)	2495	2652	2647	2417	2306	2203	2054	53.12%
BLK	(S)	15	15	22	15	15	14	11	0.28%
PPT	(B)	2292	2338	2313	2357	2351	2355	2358	34.94%
HBD	(B)	4133	4287	4084	4138	4162	4333	4390	65.06%
BLK	(B)	0	0	0	0	0	0	0	0.00%

MCP	Market Clearing Price (€/MWh)
PPT	Priority Price-Taking
HBD	Hybrid
BLK	Block
CPL	Market Coupling Flow

Trade's Volume Mix

		Sell - MWh	Buy - MWh	
Lignite	(3.4%)	5,100	0	(0.0%)
Crete Conv.	(1.7%)	2,575	0	(0.0%)
Gas	(25.8%)	38,843	0	(0.0%)
Hydro	(8.6%)	12,977	0	(0.0%)
Imports	(4.9%)	7,400		
RES	(54.9%)	82,649	984	(0.7%)
Crete RES	(0.7%)	1,000	0	(0.0%)
HV Load	(0.0%)	0	19,688	(13.1%)
MV Load	(0.0%)	0	21,077	(14.0%)
LV Load	(0.0%)	0	67,348	(44.7%)
Crete Load	(0.0%)	0	5,985	(4.0%)
Pumping	(0.0%)	0	2,098	(1.4%)
Exports			31,223	(20.7%)
Sys.Losses	(0.0%)	0	2,141	(1.4%)
D/R Load	(0.0%)	0	0	(0.0%)

