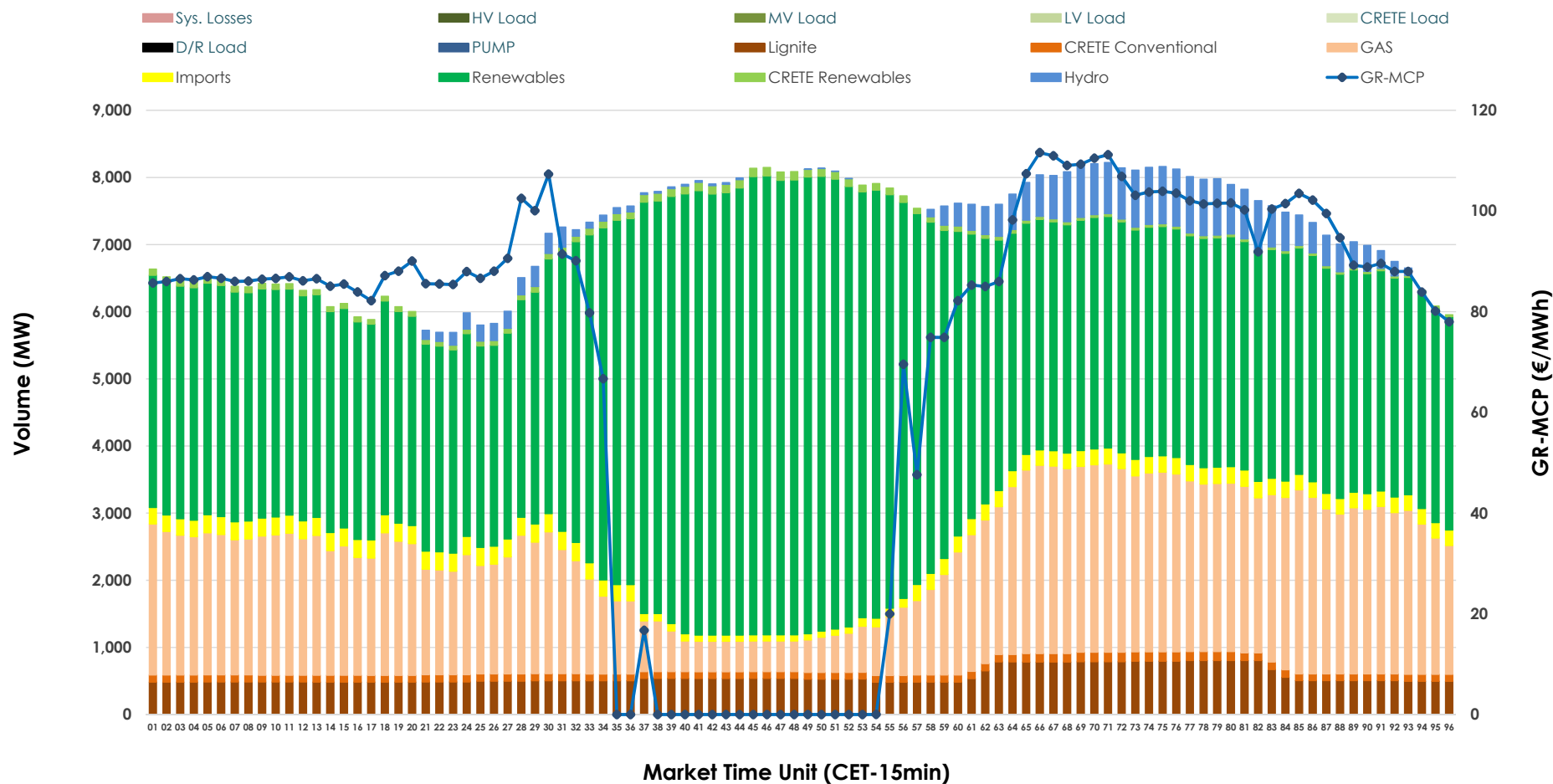


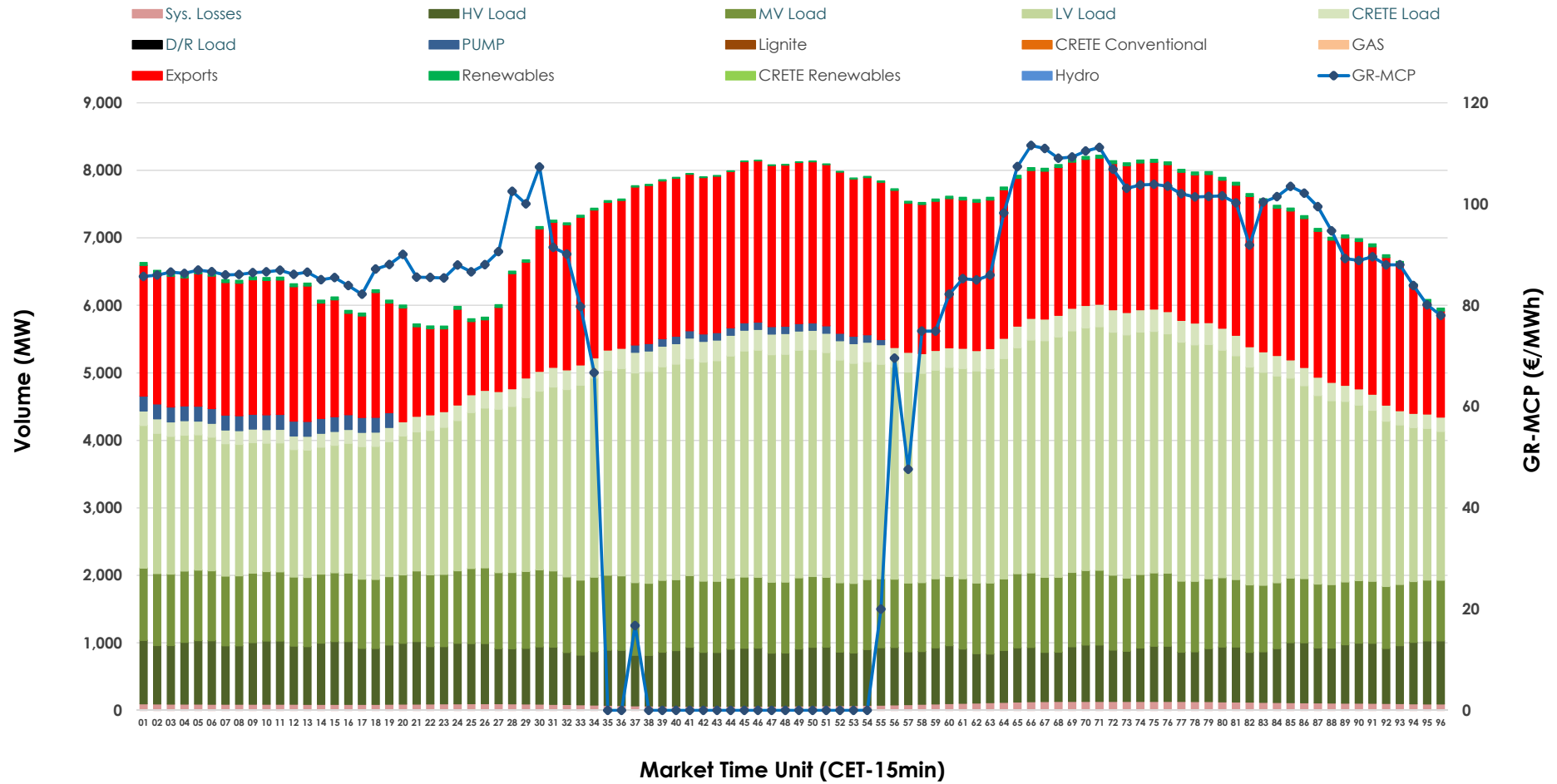


Day-Ahead Market Outlook

22.11.2025 Day-Ahead Market - Sell



22.11.2025 Day-Ahead Market - Buy



GR Bidding Zone Weekly Figures

Delivery Day	16.11	17.11	18.11	19.11	20.11	21.11	22.11
	⬇️ -11%	⬇️ -2%	⬆️ 18%	⬆️ 10%	⬇️ -15%	⬇️ -10%	⬇️ -18%
Avg.MCP (€/MWh)	90.09	88.42	104.00	114.26	97.37	87.24	71.77
Max.MCP (€/MWh)	172.04	138.67	161.60	207.99	191.24	175.90	111.59
Min.MCP (€/MWh)	0.01	0.01	77.23	81.47	0.00	0.00	0.00
	⬇️ -3%	⬆️ 14%	⬆️ 7%	⬆️ 2%	➡️ 0%	⬆️ 2%	⬇️ -5%
Tot.Vol(GWh)	286.53	327.16	350.74	356.60	355.75	364.05	346.43

Trades by Order Type

Delivery Day		16.11	17.11	18.11	19.11	20.11	21.11	22.11	
Ord Price Type		Sell & Buy Trades in (GWh) per Price Type							(%)
PPT	(S)	37.330	50.579	56.861	55.732	59.902	68.073	64.620	37.31%
HBD	(S)	55.222	65.616	71.852	68.386	71.679	70.544	69.664	40.22%
BLK	(S)	42.066	44.829	45.778	52.135	44.931	43.407	38.932	22.48%
CPL	(S)	8.649	2.558	0.881	2.047	1.362	0.000	0.000	0.00%
PPT	(B)	11.499	13.117	13.153	15.043	15.348	15.279	14.230	8.22%
HBD	(B)	113.614	126.198	129.550	128.133	125.148	124.975	119.587	69.04%
BLK	(B)	0.000	0.000	0.000	0.000	0.000	0.000	0.000	0.00%
CPL	(B)	18.153	24.267	32.669	35.124	37.378	41.769	39.399	22.75%
		Sell & Buy Orders Traded per Price Type							(%)
PPT	(S)	1534	1526	1529	1496	1496	1661	1639	42.51%
HBD	(S)	2489	2495	2652	2647	2417	2306	2203	57.13%
BLK	(S)	13	15	15	22	15	15	14	0.36%
PPT	(B)	2259	2292	2338	2313	2357	2351	2355	35.21%
HBD	(B)	4138	4133	4287	4084	4138	4162	4333	64.79%
BLK	(B)	0	0	0	0	0	0	0	0.00%

MCP	Market Clearing Price (€/MWh)
PPT	Priority Price-Taking
HBD	Hybrid
BLK	Block
CPL	Market Coupling Flow

Trade's Volume Mix

		Sell - MWh	Buy - MWh	
Lignite	(7.8%)	13,583	0	(0.0%)
Crete Conv.	(1.5%)	2,613	0	(0.0%)
Gas	(25.1%)	43,529	0	(0.0%)
Hydro	(3.5%)	5,977	0	(0.0%)
Imports	(3.0%)	5,255		
RES	(58.0%)	100,511	795	(0.5%)
Crete RES	(1.0%)	1,748	0	(0.0%)
HV Load	(0.0%)	0	20,040	(11.6%)
MV Load	(0.0%)	0	25,005	(14.4%)
LV Load	(0.0%)	0	67,590	(39.0%)
Crete Load	(0.0%)	0	6,542	(3.8%)
Pumping	(0.0%)	0	1,559	(0.9%)
Exports			49,358	(28.5%)
Sys.Losses	(0.0%)	0	2,328	(1.3%)
D/R Load	(0.0%)	0	0	(0.0%)

