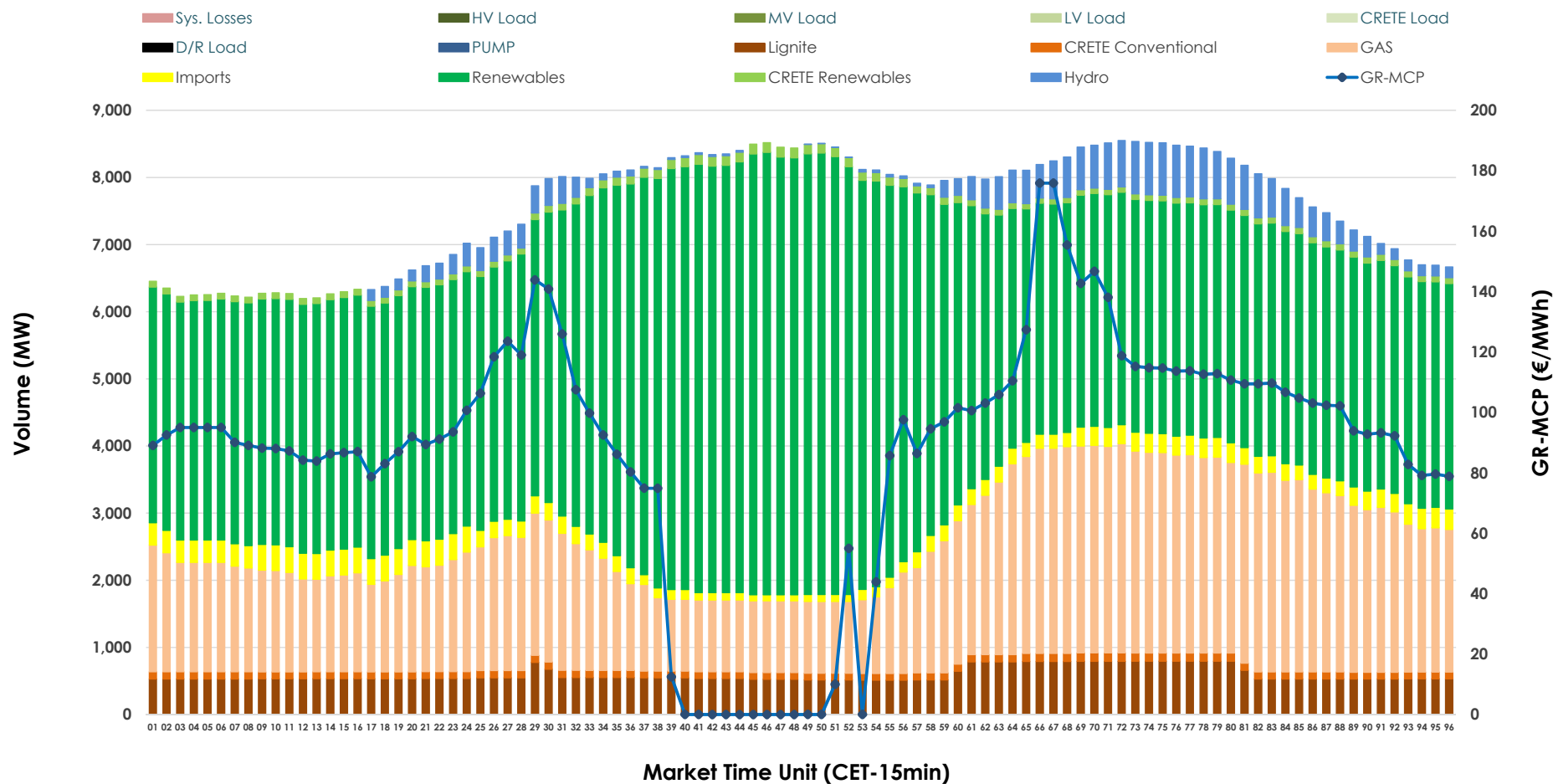


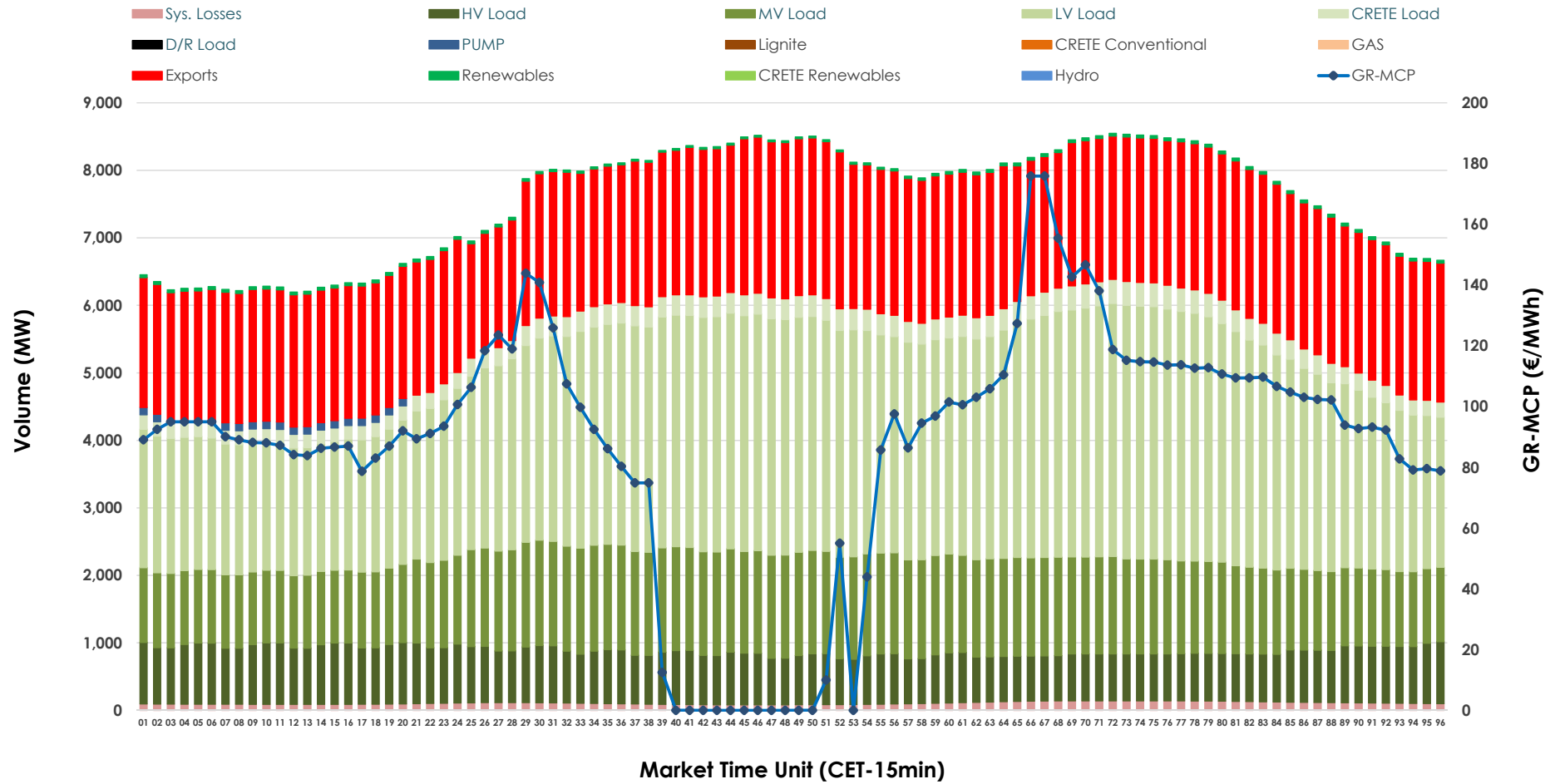


Day-Ahead Market Outlook

21.11.2025 Day-Ahead Market - Sell



21.11.2025 Day-Ahead Market - Buy



GR Bidding Zone Weekly Figures

Delivery Day	15.11	16.11	17.11	18.11	19.11	20.11	21.11
	⬇️ -13%	⬇️ -11%	⬇️ -2%	⬆️ 18%	⬆️ 10%	⬇️ -15%	⬇️ -10%
Avg.MCP (€/MWh)	100.77	90.09	88.42	104.00	114.26	97.37	87.24
Max.MCP (€/MWh)	235.60	172.04	138.67	161.60	207.99	191.24	175.90
Min.MCP (€/MWh)	0.00	0.01	0.01	77.23	81.47	0.00	0.00
	⬇️ -3%	⬇️ -3%	⬆️ 14%	⬆️ 7%	⬆️ 2%	➡️ 0%	⬆️ 2%
Tot.Vol(GWh)	294.54	286.53	327.16	350.74	356.60	355.75	364.05

Trades by Order Type

Delivery Day		15.11	16.11	17.11	18.11	19.11	20.11	21.11	
Ord Price Type		Sell & Buy Trades in (GWh) per Price Type							(%)
PPT	(S)	40.053	37.330	50.579	56.861	55.732	59.902	68.073	37.40%
HBD	(S)	55.045	55.222	65.616	71.852	68.386	71.679	70.544	38.76%
BLK	(S)	41.676	42.066	44.829	45.778	52.135	44.931	43.407	23.85%
CPL	(S)	10.495	8.649	2.558	0.881	2.047	1.362	0.000	0.00%
PPT	(B)	12.618	11.499	13.117	13.153	15.043	15.348	15.279	8.39%
HBD	(B)	121.035	113.614	126.198	129.550	128.133	125.148	124.975	68.66%
BLK	(B)	0.000	0.000	0.000	0.000	0.000	0.000	0.000	0.00%
CPL	(B)	13.616	18.153	24.267	32.669	35.124	37.378	41.769	22.95%
		Sell & Buy Orders Traded per Price Type							(%)
PPT	(S)	1617	1534	1526	1529	1496	1496	1661	41.71%
HBD	(S)	2528	2489	2495	2652	2647	2417	2306	57.91%
BLK	(S)	13	13	15	15	22	15	15	0.38%
PPT	(B)	2239	2259	2292	2338	2313	2357	2351	36.10%
HBD	(B)	4126	4138	4133	4287	4084	4138	4162	63.90%
BLK	(B)	0	0	0	0	0	0	0	0.00%

MCP	Market Clearing Price (€/MWh)
PPT	Priority Price-Taking
HBD	Hybrid
BLK	Block
CPL	Market Coupling Flow

Trade's Volume Mix

		Sell - MWh	Buy - MWh	
Lignite	(7.8%)	14,213	0	(0.0%)
Crete Conv.	(1.4%)	2,555	0	(0.0%)
Gas	(25.9%)	47,115	0	(0.0%)
Hydro	(3.3%)	6,061	0	(0.0%)
Imports	(3.4%)	6,127		
RES	(56.9%)	103,561	887	(0.5%)
Crete RES	(1.3%)	2,393	0	(0.0%)
HV Load	(0.0%)	0	18,671	(10.3%)
MV Load	(0.0%)	0	32,265	(17.7%)
LV Load	(0.0%)	0	70,445	(38.7%)
Crete Load	(0.0%)	0	6,800	(3.7%)
Pumping	(0.0%)	0	469	(0.3%)
Exports			49,918	(27.4%)
Sys.Losses	(0.0%)	0	2,568	(1.4%)
D/R Load	(0.0%)	0	0	(0.0%)

