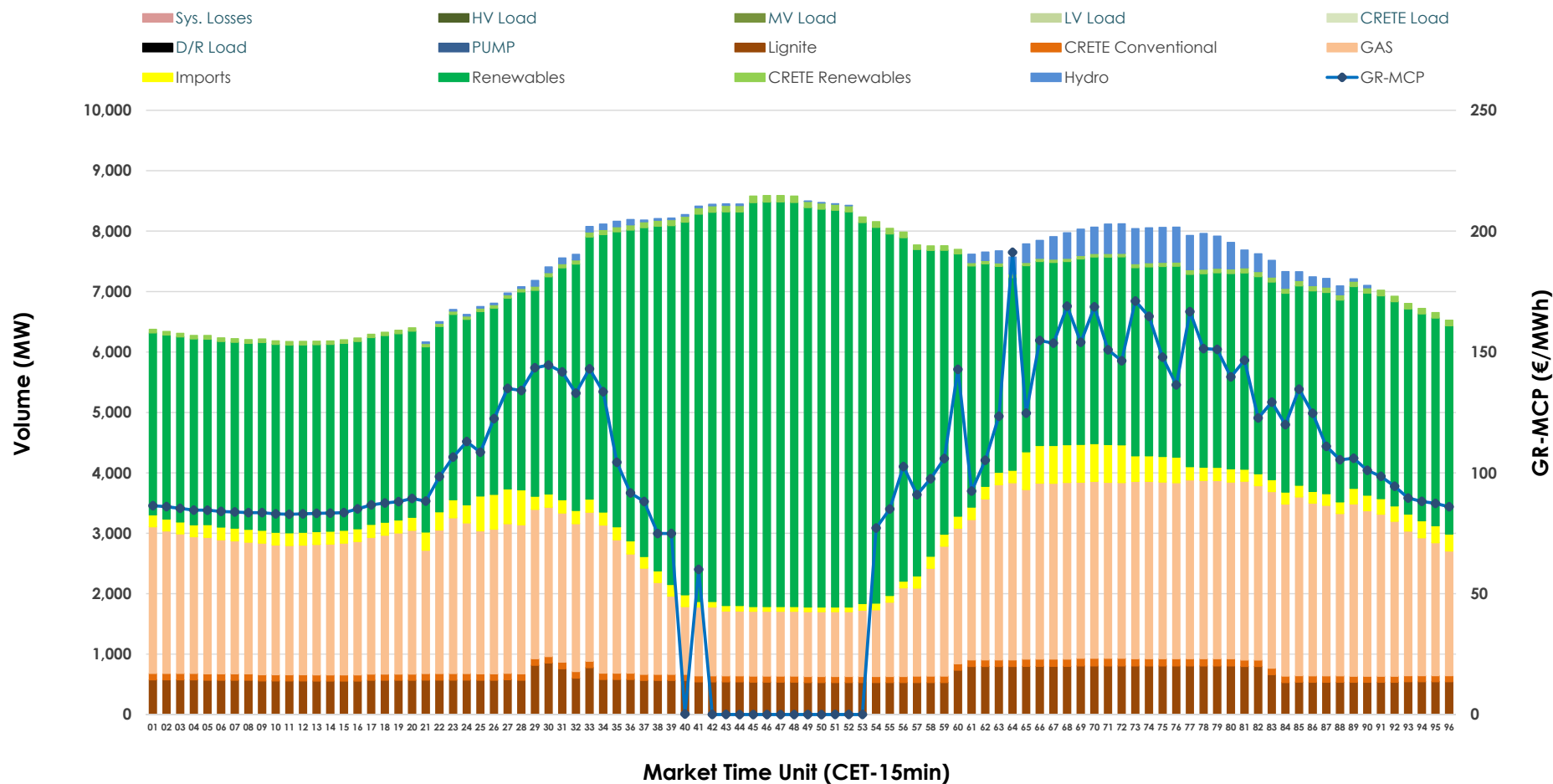


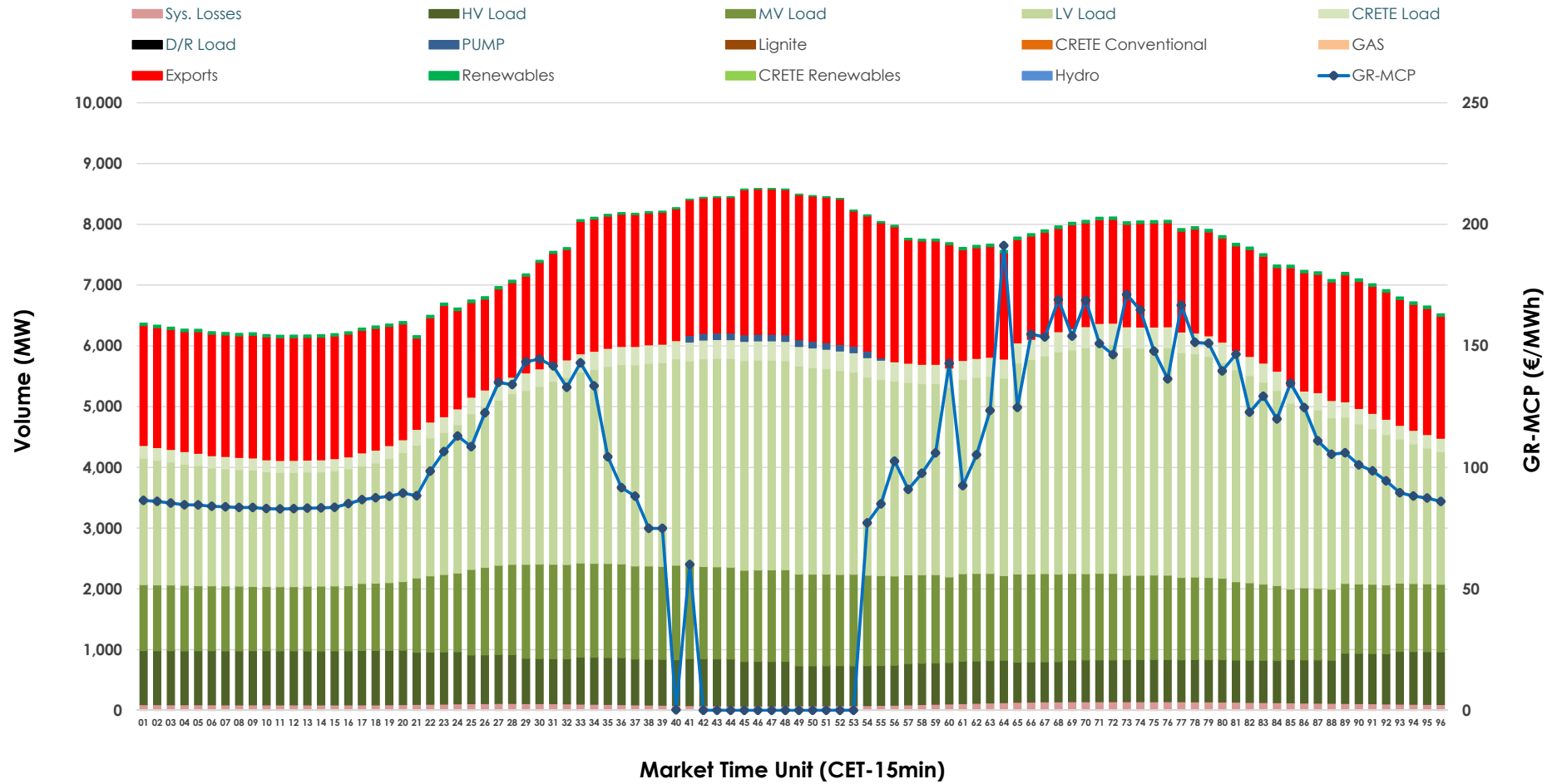


Day-Ahead Market Outlook

20.11.2025 Day-Ahead Market - Sell



20.11.2025 Day-Ahead Market - Buy



GR Bidding Zone Weekly Figures

Delivery Day	14.11	15.11	16.11	17.11	18.11	19.11	20.11
	⬇️ -19%	⬇️ -13%	⬇️ -11%	⬇️ -2%	⬆️ 18%	⬆️ 10%	⬇️ -15%
Avg.MCP (€/MWh)	116.20	100.77	90.09	88.42	104.00	114.26	97.37
Max.MCP (€/MWh)	317.63	235.60	172.04	138.67	161.60	207.99	191.24
Min.MCP (€/MWh)	0.00	0.00	0.01	0.01	77.23	81.47	0.00
	➡️ 0%	⬇️ -3%	⬇️ -3%	⬆️ 14%	⬆️ 7%	⬆️ 2%	➡️ 0%
Tot.Vol(GWh)	303.46	294.54	286.53	327.16	350.74	356.60	355.75

Trades by Order Type

Delivery Day		14.11	15.11	16.11	17.11	18.11	19.11	20.11	
Ord Price Type		Sell & Buy Trades in (GWh) per Price Type							(%)
PPT	(S)	35.223	40.053	37.330	50.579	56.861	55.732	59.902	33.68%
HBD	(S)	59.088	55.045	55.222	65.616	71.852	68.386	71.679	40.30%
BLK	(S)	48.054	41.676	42.066	44.829	45.778	52.135	44.931	25.26%
CPL	(S)	9.366	10.495	8.649	2.558	0.881	2.047	1.362	0.77%
PPT	(B)	12.426	12.618	11.499	13.117	13.153	15.043	15.348	8.63%
HBD	(B)	126.020	121.035	113.614	126.198	129.550	128.133	125.148	70.36%
BLK	(B)	0.000	0.000	0.000	0.000	0.000	0.000	0.000	0.00%
CPL	(B)	13.285	13.616	18.153	24.267	32.669	35.124	37.378	21.01%
		Sell & Buy Orders Traded per Price Type							(%)
PPT	(S)	1576	1617	1534	1526	1529	1496	1496	38.09%
HBD	(S)	2644	2528	2489	2495	2652	2647	2417	61.53%
BLK	(S)	19	13	13	15	15	22	15	0.38%
PPT	(B)	2225	2239	2259	2292	2338	2313	2357	36.29%
HBD	(B)	4038	4126	4138	4133	4287	4084	4138	63.71%
BLK	(B)	0	0	0	0	0	0	0	0.00%

MCP	Market Clearing Price (€/MWh)
PPT	Priority Price-Taking
HBD	Hybrid
BLK	Block
CPL	Market Coupling Flow

Trade's Volume Mix

		Sell - MWh	Buy - MWh	
Lignite	(8.4%)	14,942	0	(0.0%)
Crete Conv.	(1.4%)	2,561	0	(0.0%)
Gas	(30.1%)	53,624	0	(0.0%)
Hydro	(1.6%)	2,838	0	(0.0%)
Imports	(3.5%)	6,140		
RES	(54.0%)	95,969	808	(0.5%)
Crete RES	(1.0%)	1,801	0	(0.0%)
HV Load	(0.0%)	0	18,420	(10.4%)
MV Load	(0.0%)	0	31,944	(18.0%)
LV Load	(0.0%)	0	70,011	(39.4%)
Crete Load	(0.0%)	0	6,811	(3.8%)
Pumping	(0.0%)	0	394	(0.2%)
Exports			46,947	(26.4%)
Sys.Losses	(0.0%)	0	2,540	(1.4%)
D/R Load	(0.0%)	0	0	(0.0%)

