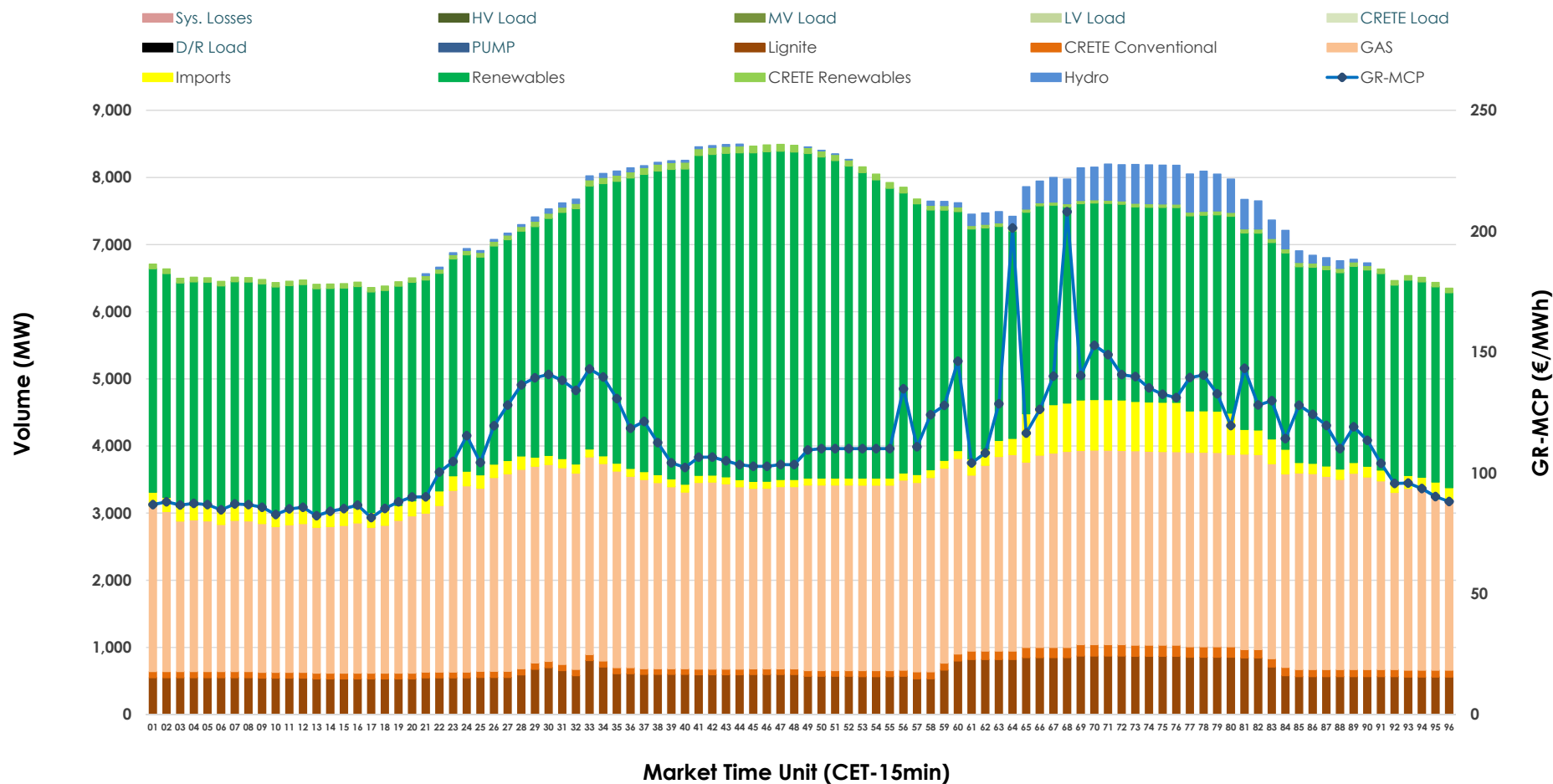


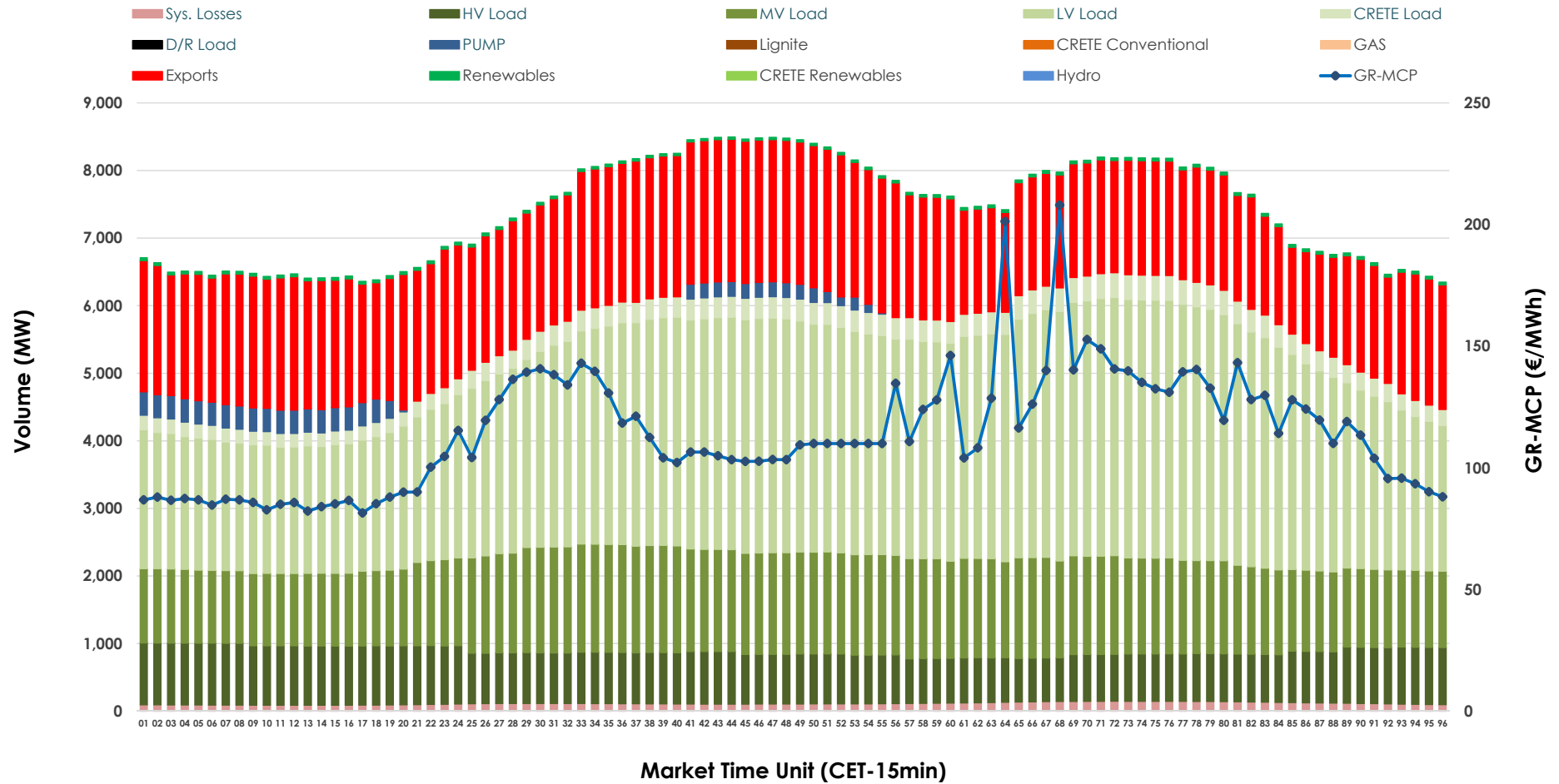


Day-Ahead Market Outlook

19.11.2025 Day-Ahead Market - Sell



19.11.2025 Day-Ahead Market - Buy



GR Bidding Zone Weekly Figures

Delivery Day	13.11	14.11	15.11	16.11	17.11	18.11	19.11
	↗ 8%	↘ -19%	↘ -13%	↘ -11%	↘ -2%	↗ 18%	↗ 10%
Avg.MCP (€/MWh)	144.28	116.20	100.77	90.09	88.42	104.00	114.26
Max.MCP (€/MWh)	306.17	317.63	235.60	172.04	138.67	161.60	207.99
Min.MCP (€/MWh)	0.01	0.00	0.00	0.01	0.01	77.23	81.47
	➡ 0%	➡ 0%	↘ -3%	↘ -3%	↗ 14%	↗ 7%	↗ 2%
Tot.Vol(GWh)	304.26	303.46	294.54	286.53	327.16	350.74	356.60

Trades by Order Type

Delivery Day		13.11	14.11	15.11	16.11	17.11	18.11	19.11	
Ord Price Type		Sell & Buy Trades in (GWh) per Price Type							(%)
PPT	(S)	38.337	35.223	40.053	37.330	50.579	56.861	55.732	31.26%
HBD	(S)	63.422	59.088	55.045	55.222	65.616	71.852	68.386	38.35%
BLK	(S)	40.880	48.054	41.676	42.066	44.829	45.778	52.135	29.24%
CPL	(S)	9.493	9.366	10.495	8.649	2.558	0.881	2.047	1.15%
PPT	(B)	12.547	12.426	12.618	11.499	13.117	13.153	15.043	8.44%
HBD	(B)	126.637	126.020	121.035	113.614	126.198	129.550	128.133	71.86%
BLK	(B)	0.000	0.000	0.000	0.000	0.000	0.000	0.000	0.00%
CPL	(B)	12.947	13.285	13.616	18.153	24.267	32.669	35.124	19.70%
		Sell & Buy Orders Traded per Price Type							(%)
PPT	(S)	1557	1576	1617	1534	1526	1529	1496	35.92%
HBD	(S)	2740	2644	2528	2489	2495	2652	2647	63.55%
BLK	(S)	17	19	13	13	15	15	22	0.53%
PPT	(B)	2244	2225	2239	2259	2292	2338	2313	36.16%
HBD	(B)	4003	4038	4126	4138	4133	4287	4084	63.84%
BLK	(B)	0	0	0	0	0	0	0	0.00%

MCP	Market Clearing Price (€/MWh)
PPT	Priority Price-Taking
HBD	Hybrid
BLK	Block
CPL	Market Coupling Flow

Trade's Volume Mix

		Sell - MWh	Buy - MWh	
Lignite	(8.6%)	15,390	0	(0.0%)
Crete Conv.	(1.4%)	2,537	0	(0.0%)
Gas	(36.3%)	64,738	0	(0.0%)
Hydro	(1.6%)	2,922	0	(0.0%)
Imports	(3.6%)	6,363		
RES	(47.5%)	84,659	936	(0.5%)
Crete RES	(0.9%)	1,692	0	(0.0%)
HV Load	(0.0%)	0	18,537	(10.4%)
MV Load	(0.0%)	0	32,348	(18.1%)
LV Load	(0.0%)	0	70,428	(39.5%)
Crete Load	(0.0%)	0	6,966	(3.9%)
Pumping	(0.0%)	0	2,330	(1.3%)
Exports			44,052	(24.7%)
Sys.Losses	(0.0%)	0	2,704	(1.5%)
D/R Load	(0.0%)	0	0	(0.0%)

