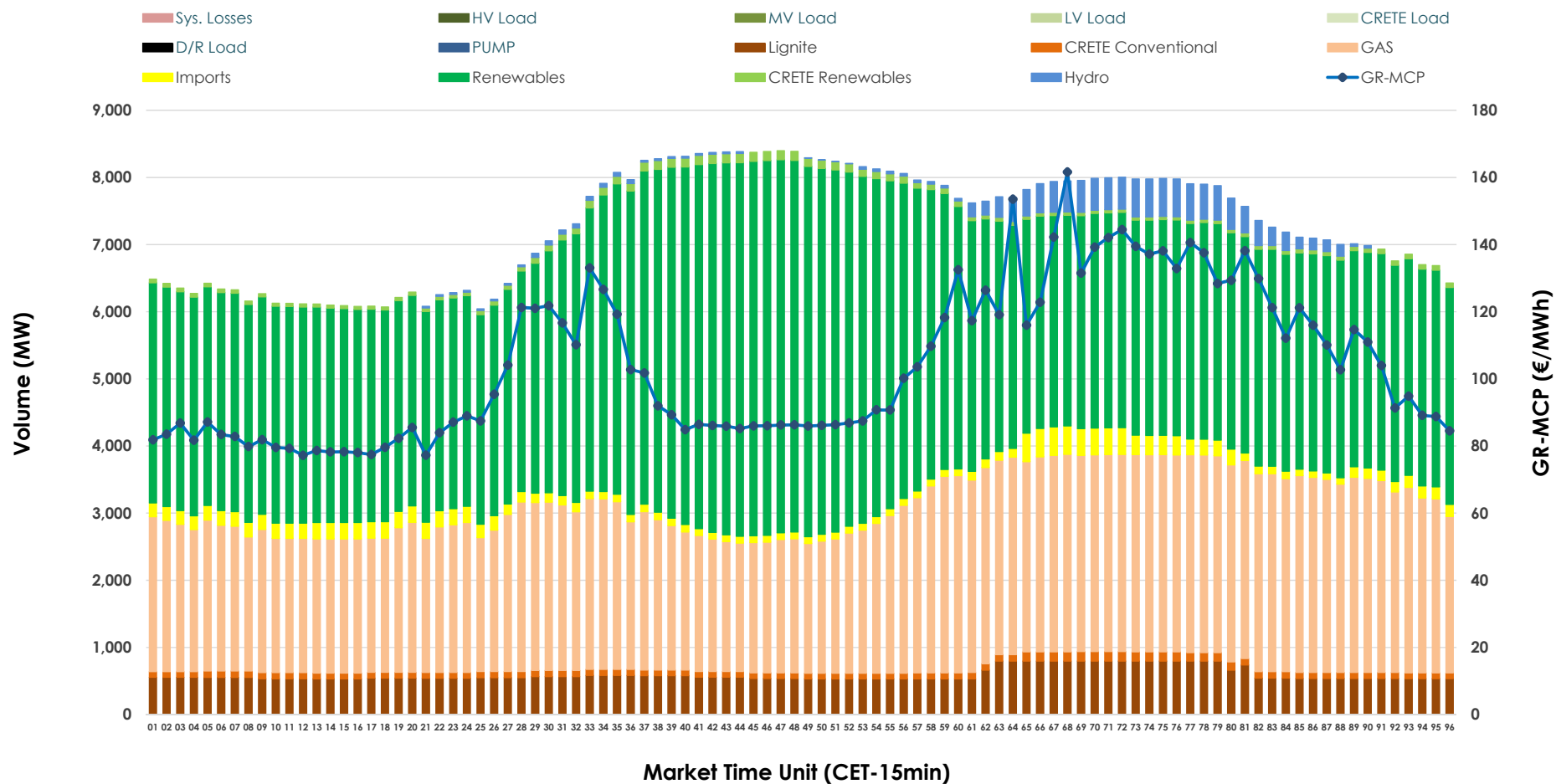


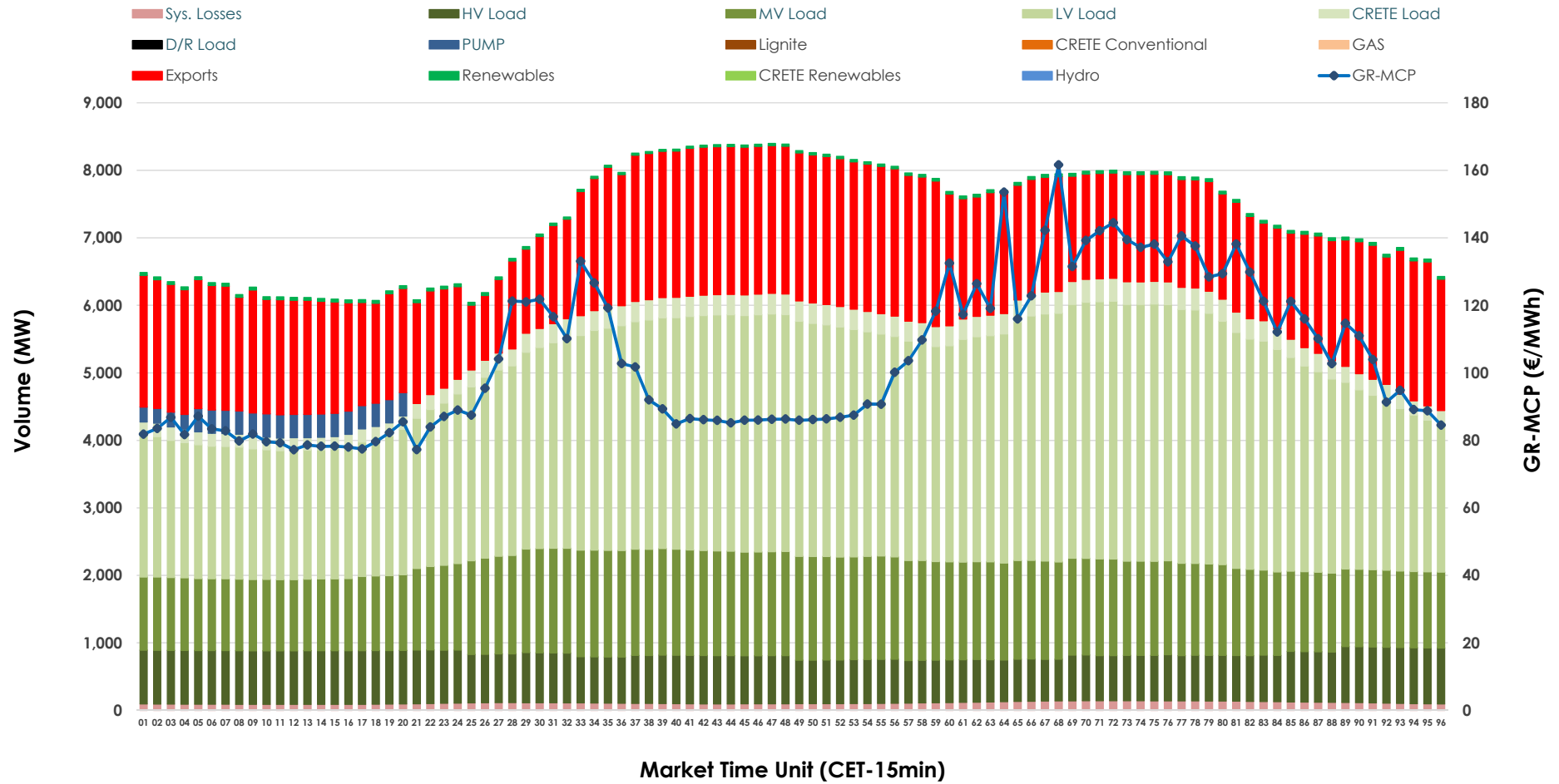


Day-Ahead Market Outlook

18.11.2025 Day-Ahead Market - Sell



18.11.2025 Day-Ahead Market - Buy



GR Bidding Zone Weekly Figures

| Delivery Day | 12.11 | 13.11 | 14.11 | 15.11 | 16.11 | 17.11 | 18.11 |
|-----------------|--------|--------|--------|--------|--------|--------|--------|
| | ↗ 20% | ↗ 8% | ↘ -19% | ↘ -13% | ↘ -11% | ↘ -2% | ↗ 18% |
| Avg.MCP (€/MWh) | 134.00 | 144.28 | 116.20 | 100.77 | 90.09 | 88.42 | 104.00 |
| Max.MCP (€/MWh) | 272.84 | 306.17 | 317.63 | 235.60 | 172.04 | 138.67 | 161.60 |
| Min.MCP (€/MWh) | 42.85 | 0.01 | 0.00 | 0.00 | 0.01 | 0.01 | 77.23 |
| | ↘ -2% | ➡ 0% | ➡ 0% | ↘ -3% | ↘ -3% | ↗ 14% | ↗ 7% |
| Tot.Vol(GWh) | 304.98 | 304.26 | 303.46 | 294.54 | 286.53 | 327.16 | 350.74 |

Trades by Order Type

| Delivery Day | | 12.11 | 13.11 | 14.11 | 15.11 | 16.11 | 17.11 | 18.11 | |
|----------------|-----|-------------------------------------------|---------|---------|---------|---------|---------|---------|--------|
| Ord Price Type | | Sell & Buy Trades in (GWh) per Price Type | | | | | | | (%) |
| PPT | (S) | 37.198 | 38.337 | 35.223 | 40.053 | 37.330 | 50.579 | 56.861 | 32.42% |
| HBD | (S) | 61.710 | 63.422 | 59.088 | 55.045 | 55.222 | 65.616 | 71.852 | 40.97% |
| BLK | (S) | 42.353 | 40.880 | 48.054 | 41.676 | 42.066 | 44.829 | 45.778 | 26.10% |
| CPL | (S) | 11.228 | 9.493 | 9.366 | 10.495 | 8.649 | 2.558 | 0.881 | 0.50% |
| PPT | (B) | 12.748 | 12.547 | 12.426 | 12.618 | 11.499 | 13.117 | 13.153 | 7.50% |
| HBD | (B) | 125.602 | 126.637 | 126.020 | 121.035 | 113.614 | 126.198 | 129.550 | 73.87% |
| BLK | (B) | 0.000 | 0.000 | 0.000 | 0.000 | 0.000 | 0.000 | 0.000 | 0.00% |
| CPL | (B) | 14.139 | 12.947 | 13.285 | 13.616 | 18.153 | 24.267 | 32.669 | 18.63% |
| | | Sell & Buy Orders Traded per Price Type | | | | | | | (%) |
| PPT | (S) | 1541 | 1557 | 1576 | 1617 | 1534 | 1526 | 1529 | 36.44% |
| HBD | (S) | 2781 | 2740 | 2644 | 2528 | 2489 | 2495 | 2652 | 63.20% |
| BLK | (S) | 15 | 17 | 19 | 13 | 13 | 15 | 15 | 0.36% |
| PPT | (B) | 2259 | 2244 | 2225 | 2239 | 2259 | 2292 | 2338 | 35.29% |
| HBD | (B) | 3954 | 4003 | 4038 | 4126 | 4138 | 4133 | 4287 | 64.71% |
| BLK | (B) | 0 | 0 | 0 | 0 | 0 | 0 | 0 | 0.00% |

| | |
|------------|-------------------------------|
| MCP | Market Clearing Price (€/MWh) |
| PPT | Priority Price-Taking |
| HBD | Hybrid |
| BLK | Block |
| CPL | Market Coupling Flow |

Trade's Volume Mix

| | | Sell - MWh | Buy - MWh | |
|-------------|---------|------------|-----------|---------|
| Lignite | (8.1%) | 14,253 | 0 | (0.0%) |
| Crete Conv. | (1.3%) | 2,307 | 0 | (0.0%) |
| Gas | (33.6%) | 58,893 | 0 | (0.0%) |
| Hydro | (1.8%) | 3,076 | 0 | (0.0%) |
| Imports | (2.5%) | 4,447 | | |
| RES | (51.7%) | 90,623 | 912 | (0.5%) |
| Crete RES | (1.0%) | 1,772 | 0 | (0.0%) |
| HV Load | (0.0%) | 0 | 17,335 | (9.9%) |
| MV Load | (0.0%) | 0 | 32,183 | (18.4%) |
| LV Load | (0.0%) | 0 | 71,240 | (40.6%) |
| Crete Load | (0.0%) | 0 | 6,460 | (3.7%) |
| Pumping | (0.0%) | 0 | 1,600 | (0.9%) |
| Exports | | | 42,981 | (24.5%) |
| Sys.Losses | (0.0%) | 0 | 2,660 | (1.5%) |
| D/R Load | (0.0%) | 0 | 0 | (0.0%) |

