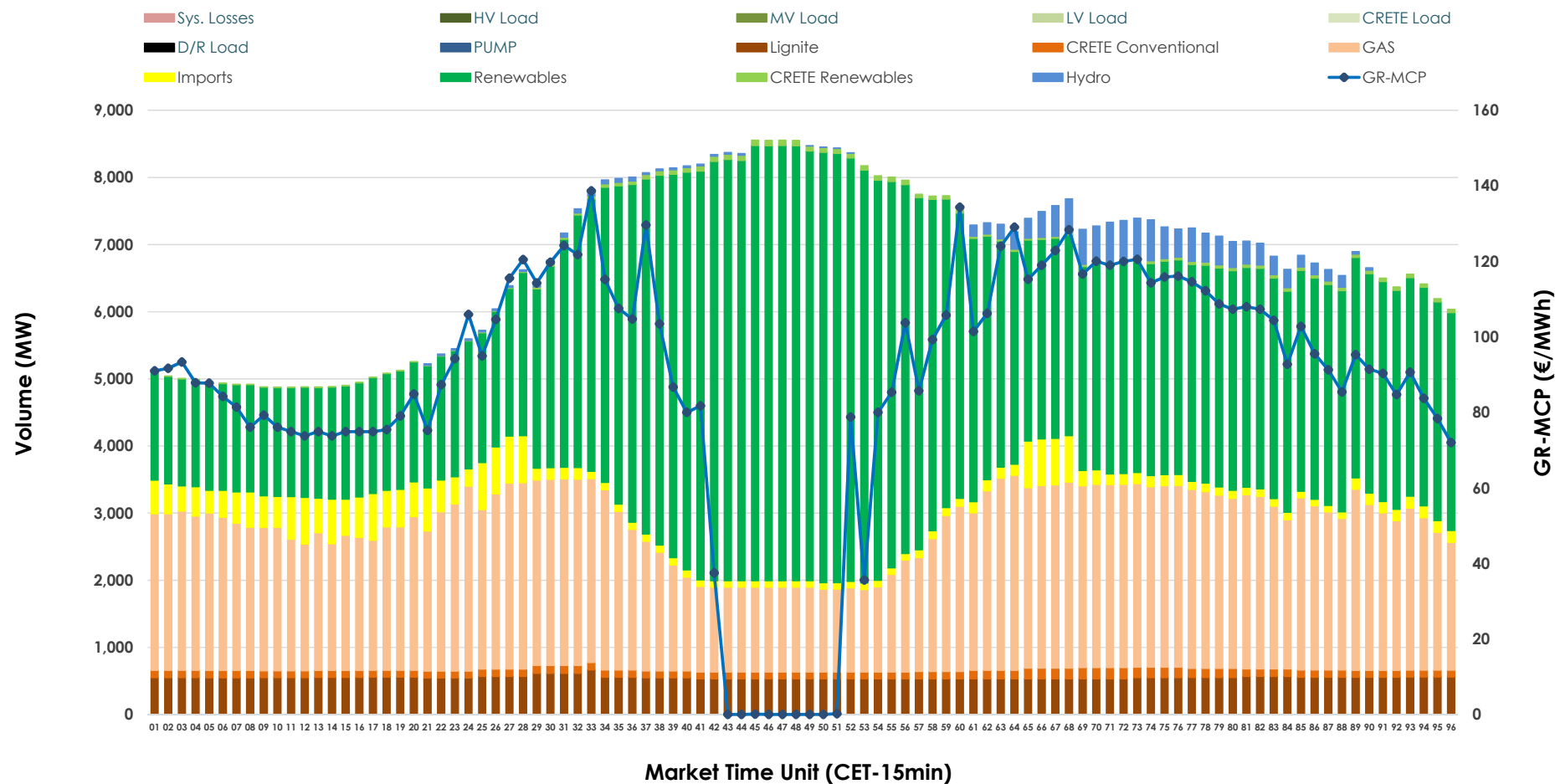


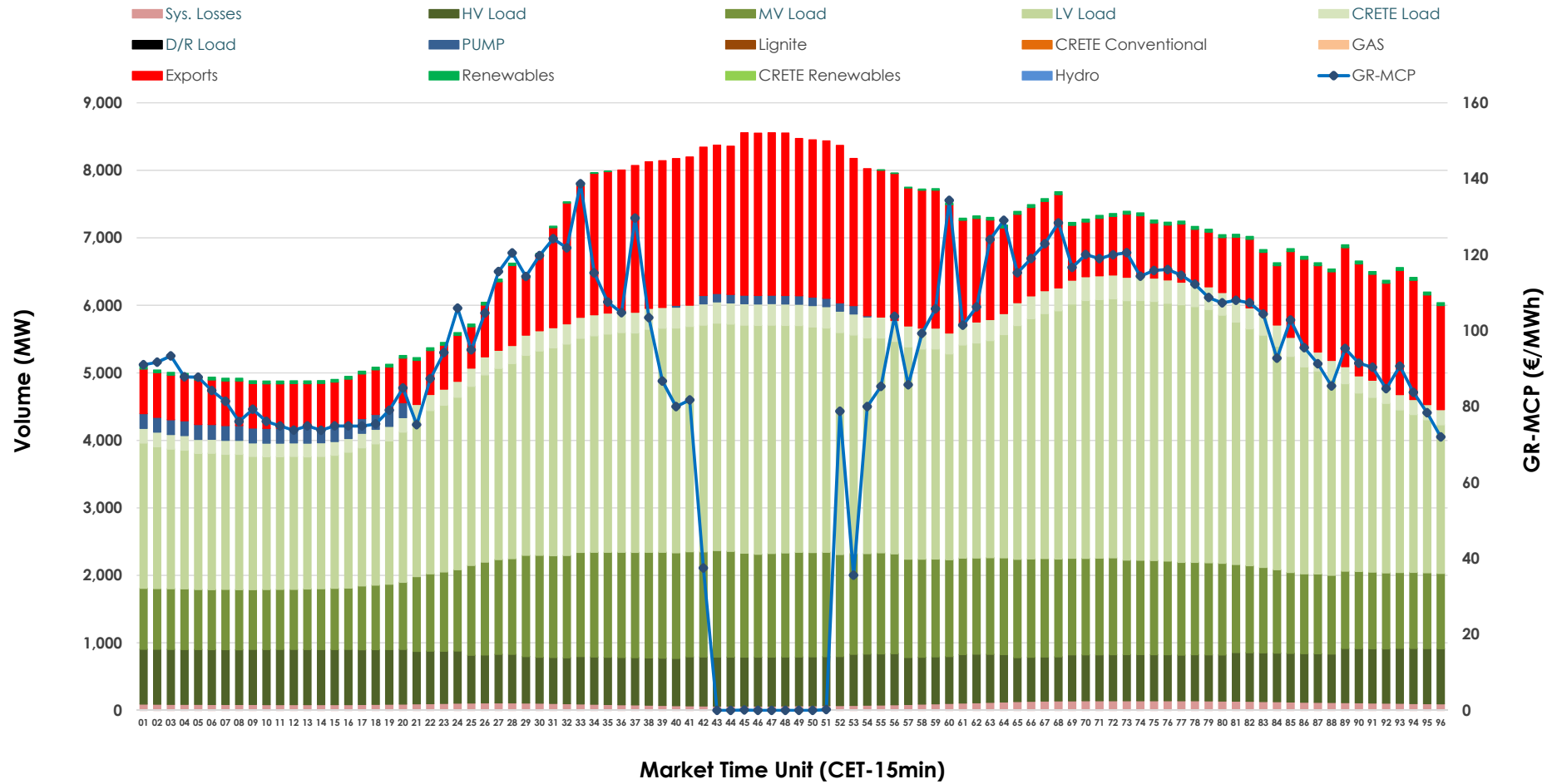


Day-Ahead Market Outlook

17.11.2025 Day-Ahead Market - Sell



17.11.2025 Day-Ahead Market - Buy



GR Bidding Zone Weekly Figures

Delivery Day	11.11	12.11	13.11	14.11	15.11	16.11	17.11
	⬇️ -9%	⬆️ 20%	⬆️ 8%	⬇️ -19%	⬇️ -13%	⬇️ -11%	⬆️ -2%
Avg.MCP (€/MWh)	111.54	134.00	144.28	116.20	100.77	90.09	88.42
Max.MCP (€/MWh)	178.23	272.84	306.17	317.63	235.60	172.04	138.67
Min.MCP (€/MWh)	1.00	42.85	0.01	0.00	0.00	0.01	0.01
	➡️ 0%	⬇️ -2%	➡️ 0%	➡️ 0%	⬇️ -3%	⬇️ -3%	⬆️ 14%
Tot.Vol(GWh)	309.97	304.98	304.26	303.46	294.54	286.53	327.16

Trades by Order Type

Delivery Day		11.11	12.11	13.11	14.11	15.11	16.11	17.11	
Ord Price Type		Sell & Buy Trades in (GWh) per Price Type							(%)
PPT	(S)	42.050	37.198	38.337	35.223	40.053	37.330	50.579	30.92%
HBD	(S)	63.513	61.710	63.422	59.088	55.045	55.222	65.616	40.11%
BLK	(S)	35.367	42.353	40.880	48.054	41.676	42.066	44.829	27.40%
CPL	(S)	14.057	11.228	9.493	9.366	10.495	8.649	2.558	1.56%
PPT	(B)	12.984	12.748	12.547	12.426	12.618	11.499	13.117	8.02%
HBD	(B)	128.127	125.602	126.637	126.020	121.035	113.614	126.198	77.15%
BLK	(B)	0.000	0.000	0.000	0.000	0.000	0.000	0.000	0.00%
CPL	(B)	13.876	14.139	12.947	13.285	13.616	18.153	24.267	14.83%
		Sell & Buy Orders Traded per Price Type							(%)
PPT	(S)	1557	1541	1557	1576	1617	1534	1526	37.81%
HBD	(S)	2688	2781	2740	2644	2528	2489	2495	61.82%
BLK	(S)	12	15	17	19	13	13	15	0.37%
PPT	(B)	2248	2259	2244	2225	2239	2259	2292	35.67%
HBD	(B)	4218	3954	4003	4038	4126	4138	4133	64.33%
BLK	(B)	0	0	0	0	0	0	0	0.00%

MCP	Market Clearing Price (€/MWh)
PPT	Priority Price-Taking
HBD	Hybrid
BLK	Block
CPL	Market Coupling Flow

Trade's Volume Mix

		Sell - MWh	Buy - MWh	
Lignite	(8.1%)	13,175	0	(0.0%)
Crete Conv.	(1.7%)	2,772	0	(0.0%)
Gas	(32.3%)	52,904	0	(0.0%)
Hydro	(1.8%)	2,865	0	(0.0%)
Imports	(4.0%)	6,525		
RES	(51.6%)	84,403	695	(0.4%)
Crete RES	(0.6%)	939	0	(0.0%)
HV Load	(0.0%)	0	17,737	(10.8%)
MV Load	(0.0%)	0	31,092	(19.0%)
LV Load	(0.0%)	0	70,959	(43.4%)
Crete Load	(0.0%)	0	6,795	(4.2%)
Pumping	(0.0%)	0	1,487	(0.9%)
Exports			32,367	(19.8%)
Sys.Losses	(0.0%)	0	2,449	(1.5%)
D/R Load	(0.0%)	0	0	(0.0%)

