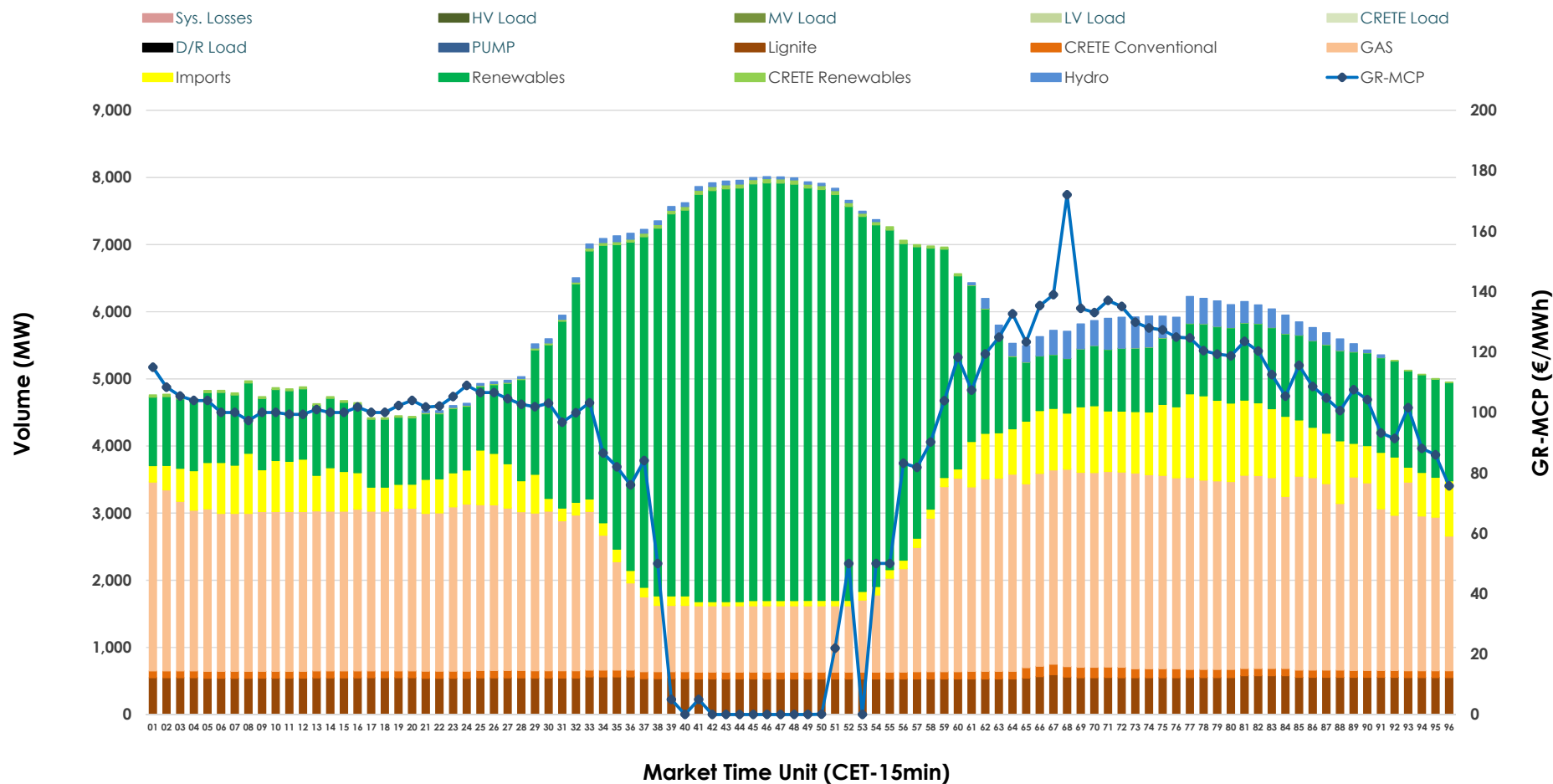


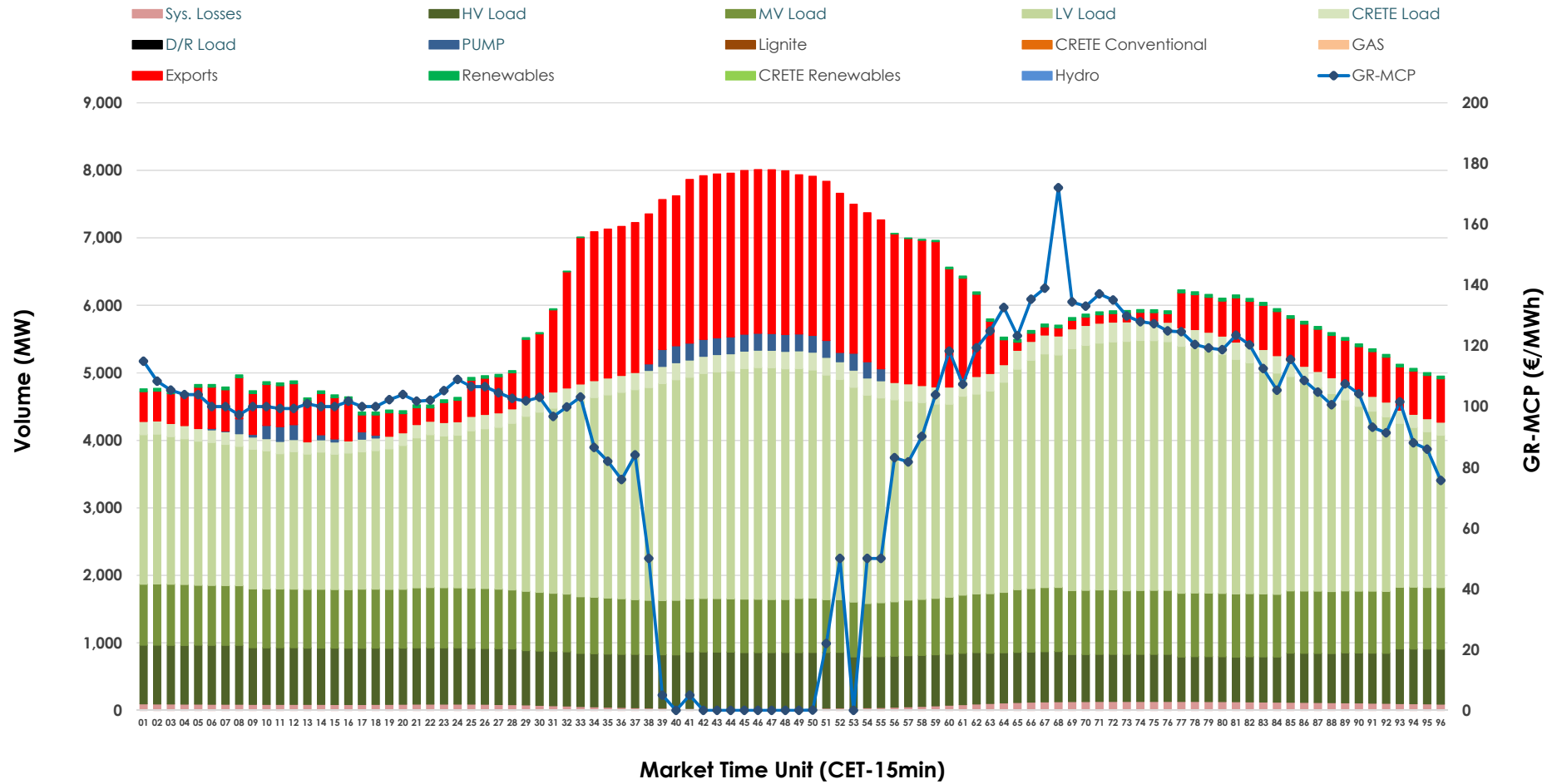


## Day-Ahead Market Outlook

16.11.2025 Day-Ahead Market - Sell



## 16.11.2025 Day-Ahead Market - Buy



### GR Bidding Zone Weekly Figures

Delivery Day	10.11	11.11	12.11	13.11	14.11	15.11	16.11
	↗ 16%	↘ -9%	↗ 20%	↗ 8%	↘ -19%	↘ -13%	↘ -11%
Avg.MCP (€/MWh)	122.23	111.54	134.00	144.28	116.20	100.77	90.09
Max.MCP (€/MWh)	215.52	178.23	272.84	306.17	317.63	235.60	172.04
Min.MCP (€/MWh)	88.82	1.00	42.85	0.01	0.00	0.00	0.01
	↗ 10%	➡ 0%	↘ -2%	➡ 0%	➡ 0%	↘ -3%	↘ -3%
Tot.Vol(GWh)	310.32	309.97	304.98	304.26	303.46	294.54	286.53

### Trades by Order Type

Delivery Day		10.11	11.11	12.11	13.11	14.11	15.11	16.11	
Ord Price Type		Sell & Buy Trades in (GWh) per Price Type							(%)
PPT	(S)	47.302	42.050	37.198	38.337	35.223	40.053	37.330	26.06%
HBD	(S)	61.884	63.513	61.710	63.422	59.088	55.045	55.222	38.54%
BLK	(S)	38.612	35.367	42.353	40.880	48.054	41.676	42.066	29.36%
CPL	(S)	7.363	14.057	11.228	9.493	9.366	10.495	8.649	6.04%
PPT	(B)	13.108	12.984	12.748	12.547	12.426	12.618	11.499	8.03%
HBD	(B)	127.947	128.127	125.602	126.637	126.020	121.035	113.614	79.30%
BLK	(B)	0.000	0.000	0.000	0.000	0.000	0.000	0.000	0.00%
CPL	(B)	14.105	13.876	14.139	12.947	13.285	13.616	18.153	12.67%
		Sell & Buy Orders Traded per Price Type							(%)
PPT	(S)	1550	1557	1541	1557	1576	1617	1534	38.01%
HBD	(S)	2662	2688	2781	2740	2644	2528	2489	61.67%
BLK	(S)	10	12	15	17	19	13	13	0.32%
PPT	(B)	2270	2248	2259	2244	2225	2239	2259	35.31%
HBD	(B)	4019	4218	3954	4003	4038	4126	4138	64.69%
BLK	(B)	0	0	0	0	0	0	0	0.00%

<b>MCP</b>	Market Clearing Price (€/MWh)
<b>PPT</b>	Priority Price-Taking
<b>HBD</b>	Hybrid
<b>BLK</b>	Block
<b>CPL</b>	Market Coupling Flow

### Trade's Volume Mix

		Sell - MWh	Buy - MWh	
Lignite	(9.1%)	13,082	0	(0.0%)
Crete Conv.	(1.9%)	2,672	0	(0.0%)
Gas	(37.5%)	53,680	0	(0.0%)
Hydro	(1.8%)	2,516	0	(0.0%)
Imports	(9.1%)	13,054		
RES	(40.2%)	57,650	675	(0.5%)
Crete RES	(0.4%)	613	0	(0.0%)
HV Load	(0.0%)	0	18,794	(13.1%)
MV Load	(0.0%)	0	21,036	(14.7%)
LV Load	(0.0%)	0	68,821	(48.0%)
Crete Load	(0.0%)	0	5,674	(4.0%)
Pumping	(0.0%)	0	1,338	(0.9%)
Exports			24,855	(17.3%)
Sys.Losses	(0.0%)	0	2,074	(1.4%)
D/R Load	(0.0%)	0	0	(0.0%)

