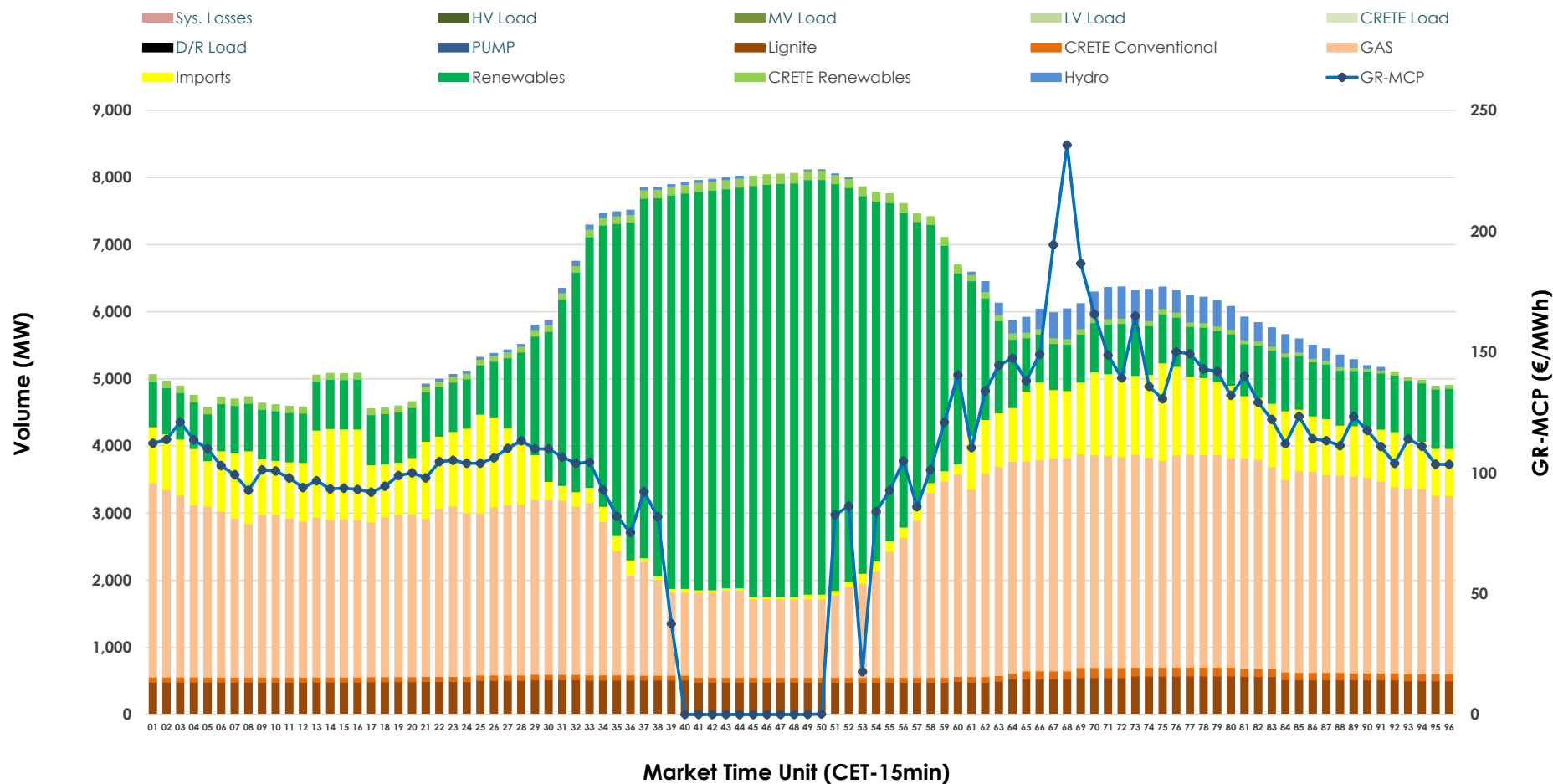


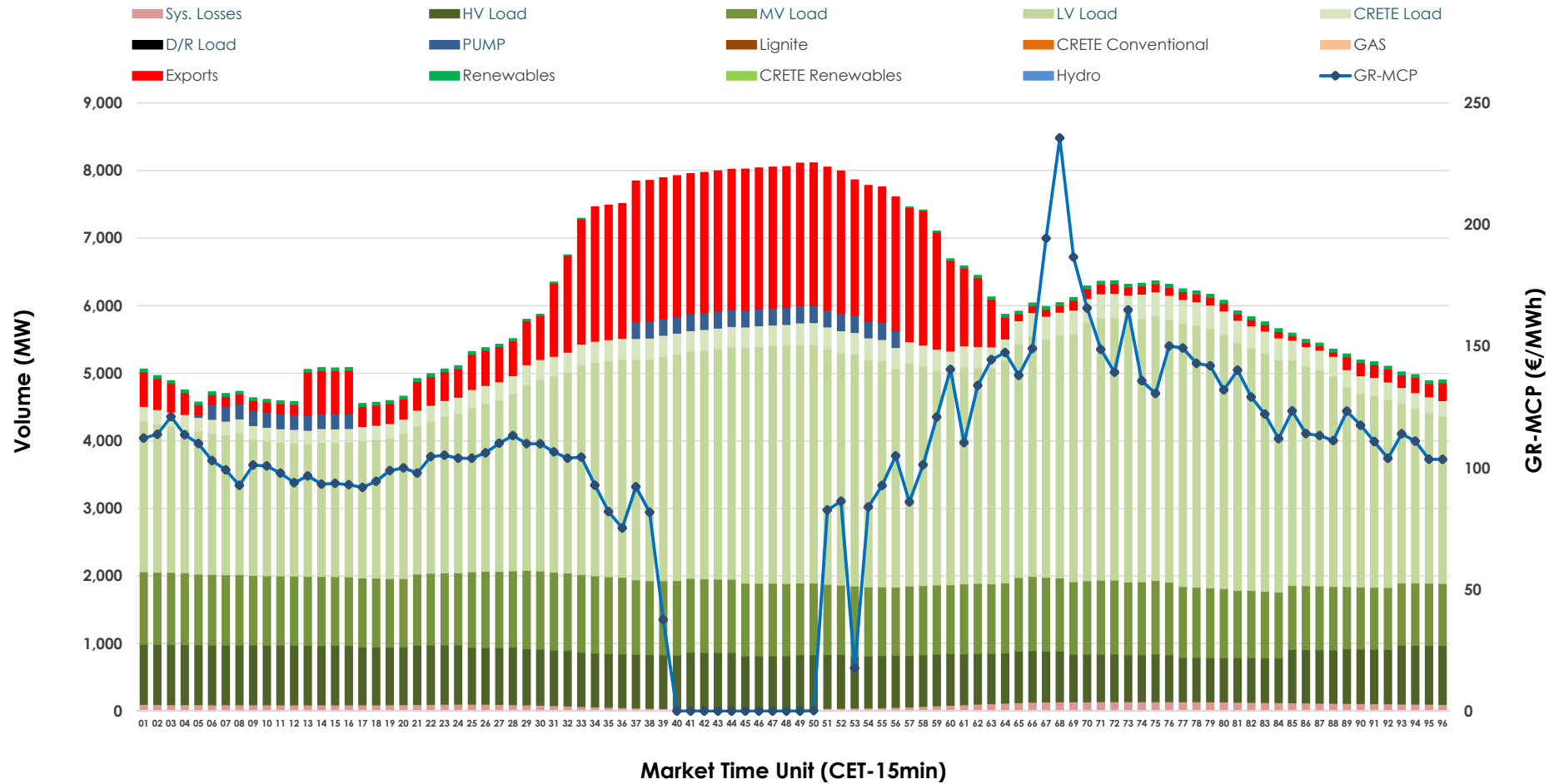


Day-Ahead Market Outlook

15.11.2025 Day-Ahead Market - Sell



15.11.2025 Day-Ahead Market - Buy



GR Bidding Zone Weekly Figures

Delivery Day	09.11	10.11	11.11	12.11	13.11	14.11	15.11
	⬇️ -5%	⬆️ 16%	⬇️ -9%	⬆️ 20%	⬆️ 8%	⬇️ -19%	⬇️ -13%
Avg.MCP (€/MWh)	105.54	122.23	111.54	134.00	144.28	116.20	100.77
Max.MCP (€/MWh)	140.91	215.52	178.23	272.84	306.17	317.63	235.60
Min.MCP (€/MWh)	86.73	88.82	1.00	42.85	0.01	0.00	0.00
	⬇️ -5%	⬆️ 10%	➡️ 0%	⬇️ -2%	➡️ 0%	➡️ 0%	⬇️ -3%
Tot.Vol(GWh)	282.98	310.32	309.97	304.98	304.26	303.46	294.54

Trades by Order Type

Delivery Day		09.11	10.11	11.11	12.11	13.11	14.11	15.11	
Ord Price Type		Sell & Buy Trades in (GWh) per Price Type							(%)
PPT	(S)	45.444	47.302	42.050	37.198	38.337	35.223	40.053	27.20%
HBD	(S)	55.648	61.884	63.513	61.710	63.422	59.088	55.045	37.38%
BLK	(S)	35.866	38.612	35.367	42.353	40.880	48.054	41.676	28.30%
CPL	(S)	4.532	7.363	14.057	11.228	9.493	9.366	10.495	7.13%
PPT	(B)	12.923	13.108	12.984	12.748	12.547	12.426	12.618	8.57%
HBD	(B)	114.001	127.947	128.127	125.602	126.637	126.020	121.035	82.19%
BLK	(B)	0.000	0.000	0.000	0.000	0.000	0.000	0.000	0.00%
CPL	(B)	14.565	14.105	13.876	14.139	12.947	13.285	13.616	9.25%
		Sell & Buy Orders Traded per Price Type							(%)
PPT	(S)	1572	1550	1557	1541	1557	1576	1617	38.89%
HBD	(S)	2522	2662	2688	2781	2740	2644	2528	60.80%
BLK	(S)	14	10	12	15	17	19	13	0.31%
PPT	(B)	2314	2270	2248	2259	2244	2225	2239	35.18%
HBD	(B)	4314	4019	4218	3954	4003	4038	4126	64.82%
BLK	(B)	0	0	0	0	0	0	0	0.00%

MCP	Market Clearing Price (€/MWh)
PPT	Priority Price-Taking
HBD	Hybrid
BLK	Block
CPL	Market Coupling Flow

Trade's Volume Mix

		Sell - MWh	Buy - MWh	
Lignite	(8.3%)	12,203	0	(0.0%)
Crete Conv.	(1.5%)	2,163	0	(0.0%)
Gas	(39.8%)	58,651	0	(0.0%)
Hydro	(1.6%)	2,389	0	(0.0%)
Imports	(11.5%)	16,922		
RES	(35.8%)	52,696	673	(0.5%)
Crete RES	(1.5%)	2,246	0	(0.0%)
HV Load	(0.0%)	0	19,144	(13.0%)
MV Load	(0.0%)	0	25,130	(17.1%)
LV Load	(0.0%)	0	71,896	(48.8%)
Crete Load	(0.0%)	0	6,867	(4.7%)
Pumping	(0.0%)	0	1,865	(1.3%)
Exports			19,448	(13.2%)
Sys.Losses	(0.0%)	0	2,245	(1.5%)
D/R Load	(0.0%)	0	0	(0.0%)

