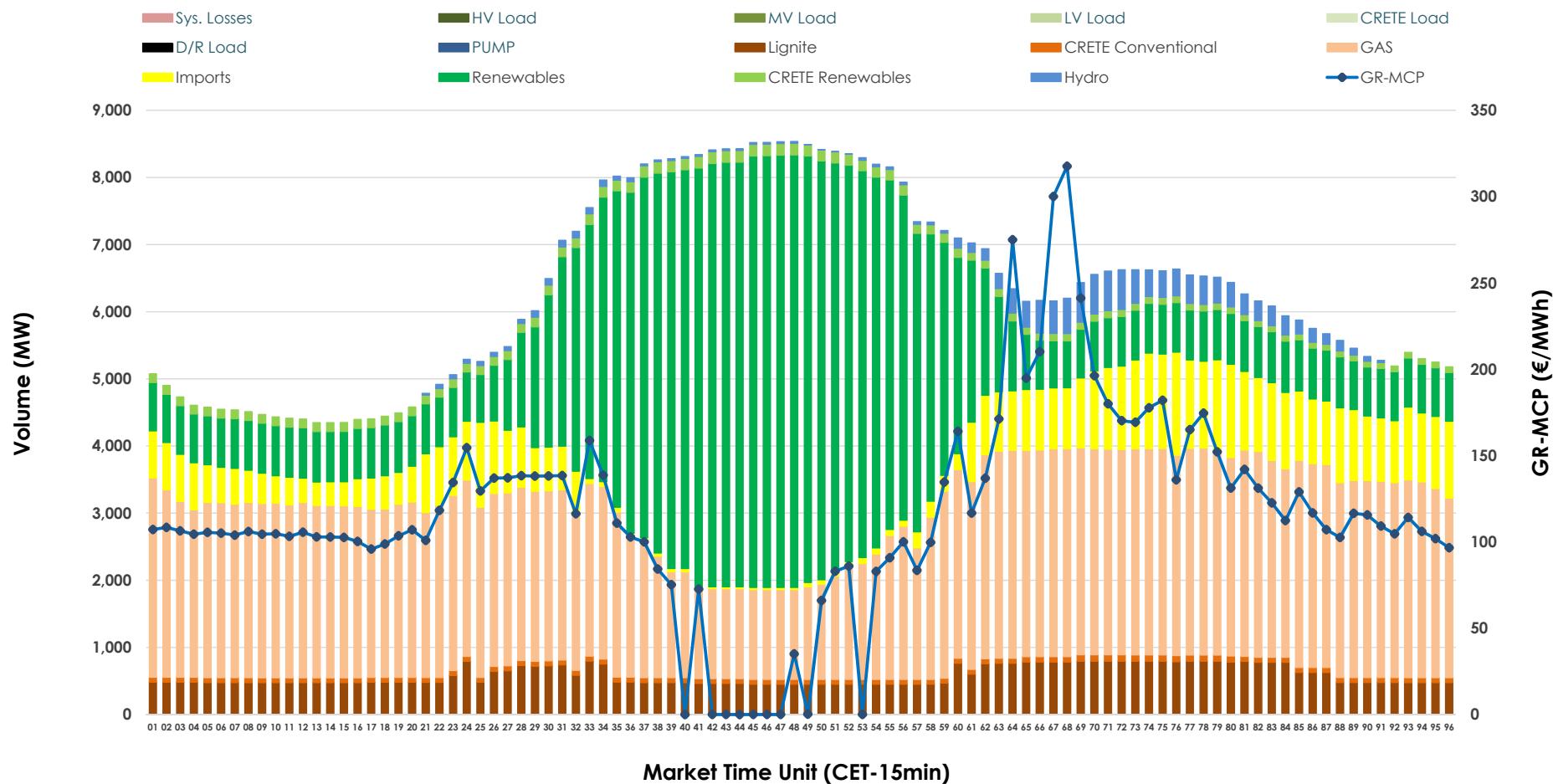


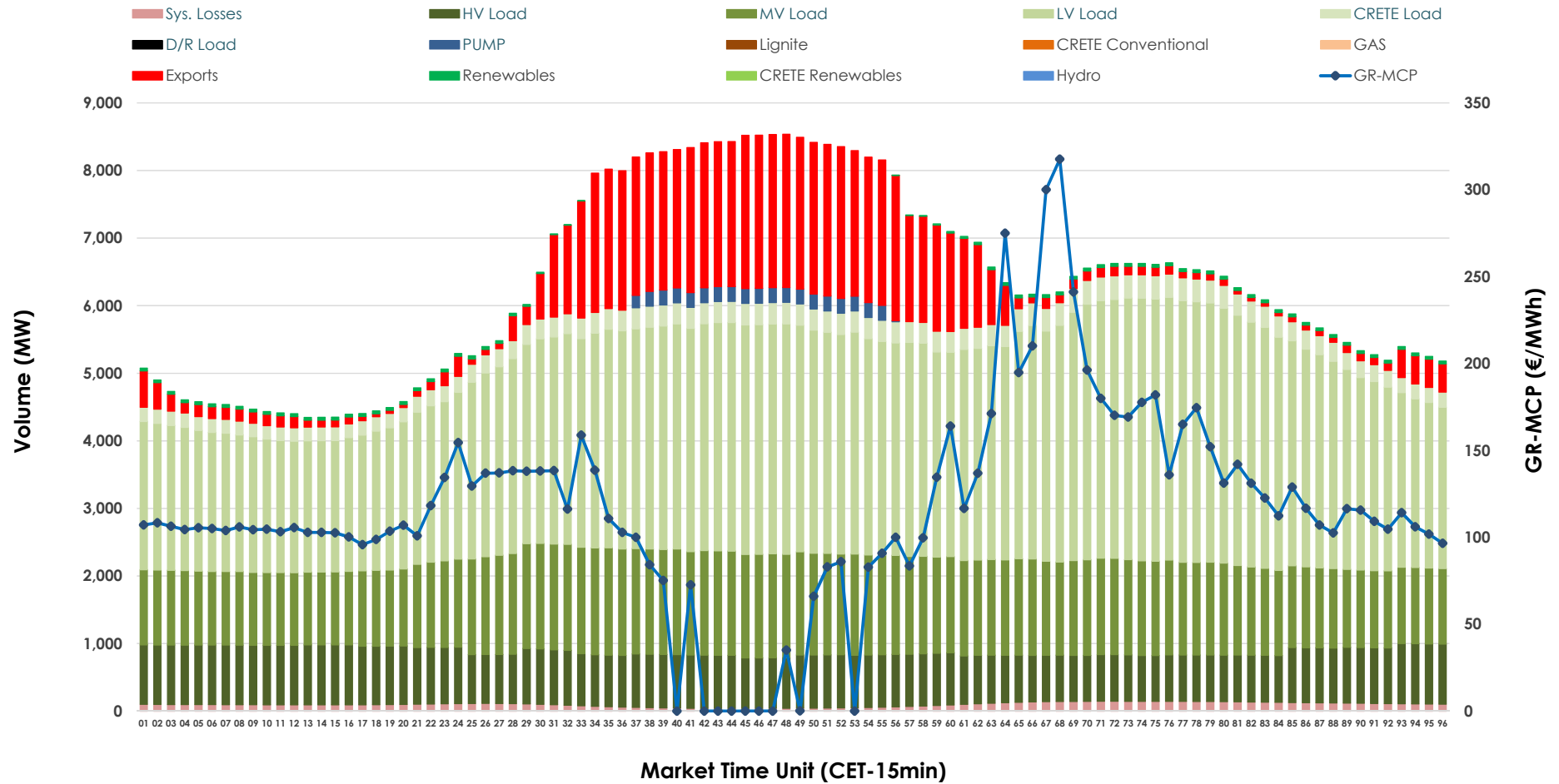


Day-Ahead Market Outlook

14.11.2025 Day-Ahead Market - Sell



14.11.2025 Day-Ahead Market - Buy



GR Bidding Zone Weekly Figures

Delivery Day	08.11	09.11	10.11	11.11	12.11	13.11	14.11
	⬇️ -17%	⬇️ -5%	⬆️ 16%	⬇️ -9%	⬆️ 20%	⬆️ 8%	⬇️ -19%
Avg.MCP (€/MWh)	111.31	105.54	122.23	111.54	134.00	144.28	116.20
Max.MCP (€/MWh)	200.89	140.91	215.52	178.23	272.84	306.17	317.63
Min.MCP (€/MWh)	89.14	86.73	88.82	1.00	42.85	0.01	0.00
	⬇️ -1%	⬇️ -5%	⬆️ 10%	➡️ 0%	⬇️ -2%	➡️ 0%	➡️ 0%
Tot.Vol(GWh)	298.18	282.98	310.32	309.97	304.98	304.26	303.46

Trades by Order Type

Delivery Day		08.11	09.11	10.11	11.11	12.11	13.11	14.11	
Ord Price Type		Sell & Buy Trades in (GWh) per Price Type							(%)
PPT	(S)	42.776	45.444	47.302	42.050	37.198	38.337	35.223	23.21%
HBD	(S)	56.636	55.648	61.884	63.513	61.710	63.422	59.088	38.94%
BLK	(S)	35.079	35.866	38.612	35.367	42.353	40.880	48.054	31.67%
CPL	(S)	14.601	4.532	7.363	14.057	11.228	9.493	9.366	6.17%
PPT	(B)	13.523	12.923	13.108	12.984	12.748	12.547	12.426	8.19%
HBD	(B)	124.020	114.001	127.947	128.127	125.602	126.637	126.020	83.06%
BLK	(B)	0.000	0.000	0.000	0.000	0.000	0.000	0.000	0.00%
CPL	(B)	11.549	14.565	14.105	13.876	14.139	12.947	13.285	8.76%
		Sell & Buy Orders Traded per Price Type							(%)
PPT	(S)	1564	1572	1550	1557	1541	1557	1576	37.18%
HBD	(S)	2527	2522	2662	2688	2781	2740	2644	62.37%
BLK	(S)	10	14	10	12	15	17	19	0.45%
PPT	(B)	2290	2314	2270	2248	2259	2244	2225	35.53%
HBD	(B)	4118	4314	4019	4218	3954	4003	4038	64.47%
BLK	(B)	0	0	0	0	0	0	0	0.00%

MCP	Market Clearing Price (€/MWh)
PPT	Priority Price-Taking
HBD	Hybrid
BLK	Block
CPL	Market Coupling Flow

Trade's Volume Mix

		Sell - MWh	Buy - MWh	
Lignite	(9.2%)	13,940	0	(0.0%)
Crete Conv.	(1.2%)	1,816	0	(0.0%)
Gas	(39.9%)	60,513	0	(0.0%)
Hydro	(2.0%)	3,108	0	(0.0%)
Imports	(10.3%)	15,566		
RES	(35.4%)	53,714	678	(0.4%)
Crete RES	(2.0%)	3,075	0	(0.0%)
HV Load	(0.0%)	0	18,882	(12.4%)
MV Load	(0.0%)	0	32,171	(21.2%)
LV Load	(0.0%)	0	71,313	(47.0%)
Crete Load	(0.0%)	0	6,768	(4.5%)
Pumping	(0.0%)	0	1,039	(0.7%)
Exports			18,527	(12.2%)
Sys.Losses	(0.0%)	0	2,352	(1.6%)
D/R Load	(0.0%)	0	0	(0.0%)

