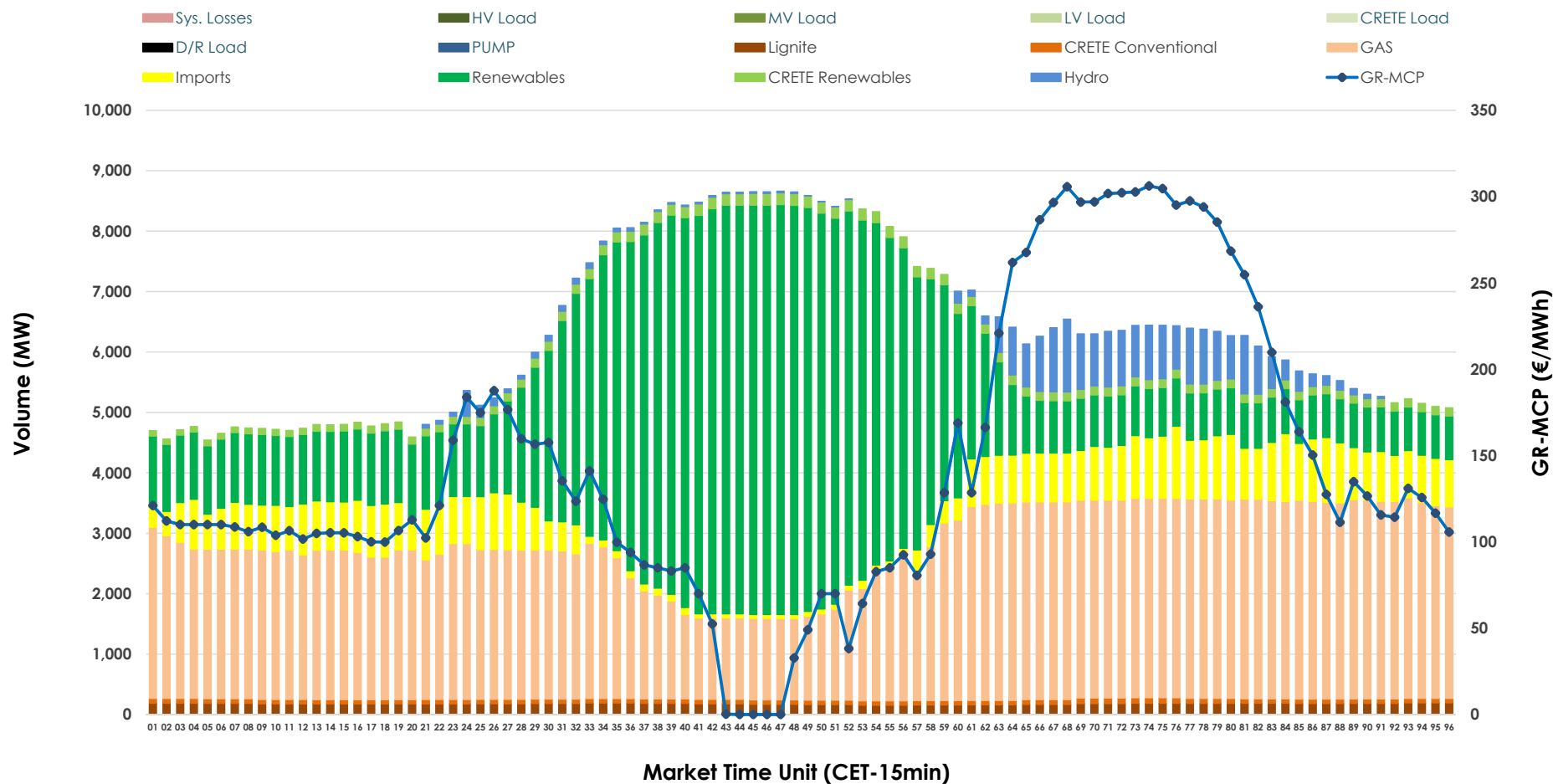


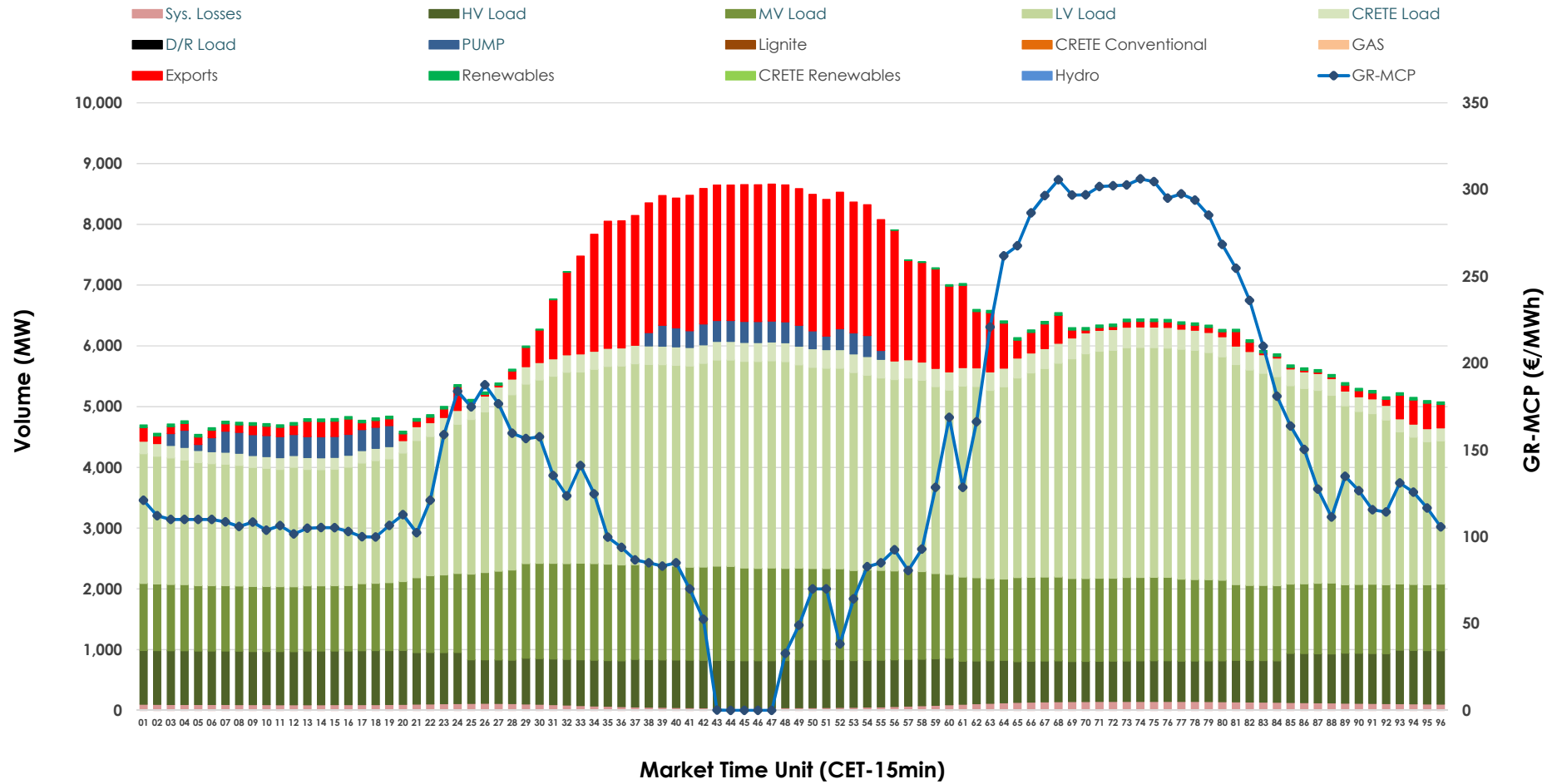


Day-Ahead Market Outlook

13.11.2025 Day-Ahead Market - Sell



13.11.2025 Day-Ahead Market - Buy



GR Bidding Zone Weekly Figures

Delivery Day	07.11	08.11	09.11	10.11	11.11	12.11	13.11
	↗ 3%	↘ -17%	↘ -5%	↗ 16%	↘ -9%	↗ 20%	↗ 8%
Avg.MCP (€/MWh)	134.73	111.31	105.54	122.23	111.54	134.00	144.28
Max.MCP (€/MWh)	345.76	200.89	140.91	215.52	178.23	272.84	306.17
Min.MCP (€/MWh)	82.79	89.14	86.73	88.82	1.00	42.85	0.01
	↘ -9%	↘ -1%	↘ -5%	↗ 10%	↘ 0%	↘ -2%	↗ 0%
Tot.Vol(GWh)	302.36	298.18	282.98	310.32	309.97	304.98	304.26

Trades by Order Type

Delivery Day		07.11	08.11	09.11	10.11	11.11	12.11	13.11	
Ord Price Type		Sell & Buy Trades in (GWh) per Price Type							(%)
PPT	(S)	33.430	42.776	45.444	47.302	42.050	37.198	38.337	25.20%
HBD	(S)	54.736	56.636	55.648	61.884	63.513	61.710	63.422	41.69%
BLK	(S)	47.978	35.079	35.866	38.612	35.367	42.353	40.880	26.87%
CPL	(S)	15.035	14.601	4.532	7.363	14.057	11.228	9.493	6.24%
PPT	(B)	12.990	13.523	12.923	13.108	12.984	12.748	12.547	8.25%
HBD	(B)	130.874	124.020	114.001	127.947	128.127	125.602	126.637	83.24%
BLK	(B)	0.000	0.000	0.000	0.000	0.000	0.000	0.000	0.00%
CPL	(B)	7.315	11.549	14.565	14.105	13.876	14.139	12.947	8.51%
		Sell & Buy Orders Traded per Price Type							(%)
PPT	(S)	1567	1564	1572	1550	1557	1541	1557	36.09%
HBD	(S)	2568	2527	2522	2662	2688	2781	2740	63.51%
BLK	(S)	15	10	14	10	12	15	17	0.39%
PPT	(B)	2245	2290	2314	2270	2248	2259	2244	35.92%
HBD	(B)	4159	4118	4314	4019	4218	3954	4003	64.08%
BLK	(B)	0	0	0	0	0	0	0	0.00%

MCP	Market Clearing Price (€/MWh)
PPT	Priority Price-Taking
HBD	Hybrid
BLK	Block
CPL	Market Coupling Flow

Trade's Volume Mix

		Sell - MWh	Buy - MWh	
Lignite	(2.8%)	4,246	0	(0.0%)
Crete Conv.	(1.2%)	1,816	0	(0.0%)
Gas	(41.0%)	62,329	0	(0.0%)
Hydro	(3.6%)	5,437	0	(0.0%)
Imports	(9.8%)	14,903		
RES	(39.4%)	59,876	672	(0.4%)
Crete RES	(2.3%)	3,525	0	(0.0%)
HV Load	(0.0%)	0	18,704	(12.3%)
MV Load	(0.0%)	0	31,773	(20.9%)
LV Load	(0.0%)	0	70,718	(46.5%)
Crete Load	(0.0%)	0	6,585	(4.3%)
Pumping	(0.0%)	0	2,726	(1.8%)
Exports			18,572	(12.2%)
Sys.Losses	(0.0%)	0	2,381	(1.6%)
D/R Load	(0.0%)	0	0	(0.0%)

