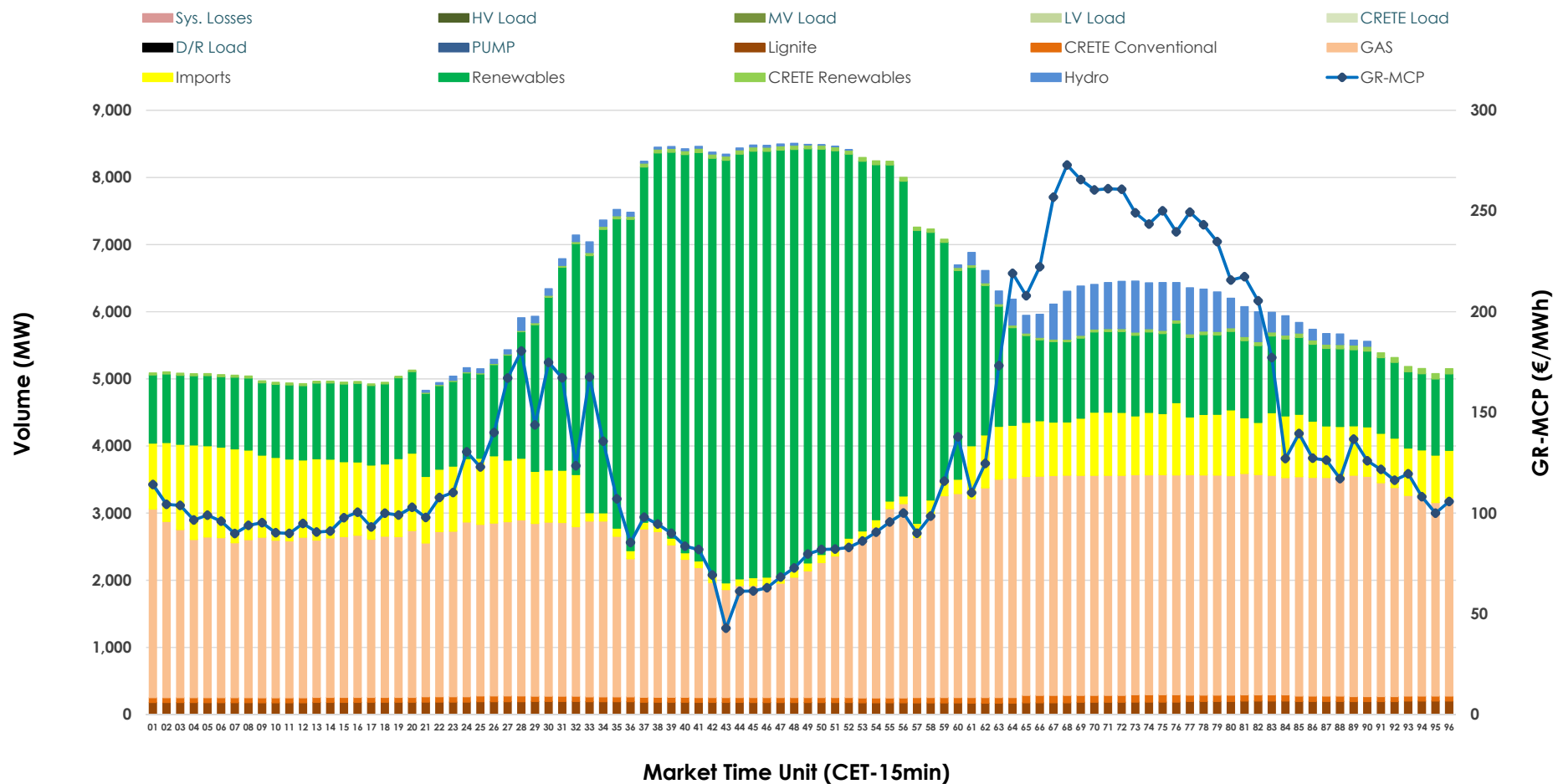


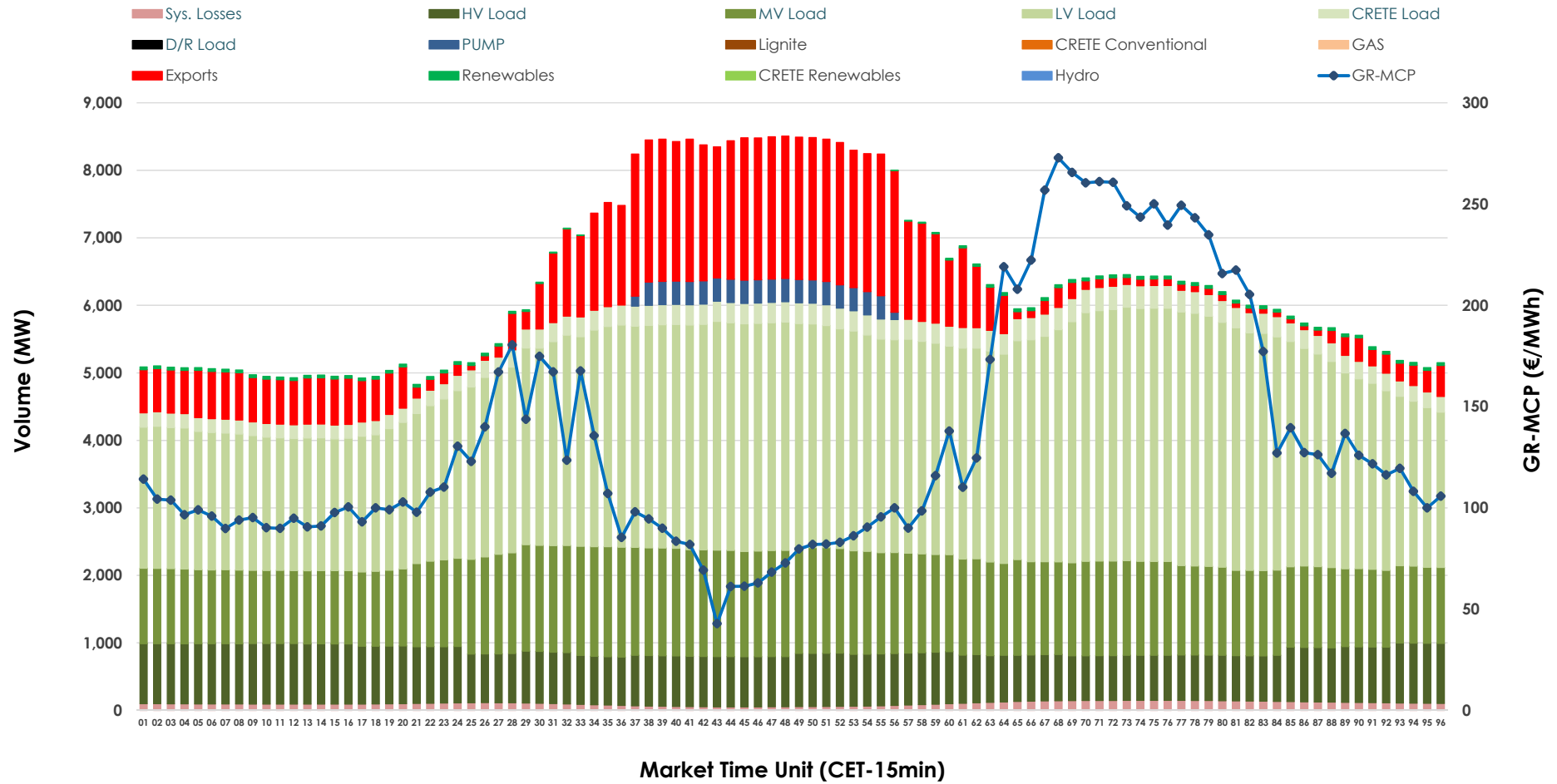


Day-Ahead Market Outlook

12.11.2025 Day-Ahead Market - Sell



12.11.2025 Day-Ahead Market - Buy



GR Bidding Zone Weekly Figures

Delivery Day	06.11	07.11	08.11	09.11	10.11	11.11	12.11
	↗ 6%	↗ 3%	↘ -17%	↘ -5%	↗ 16%	↘ -9%	↗ 20%
Avg.MCP (€/MWh)	130.70	134.73	111.31	105.54	122.23	111.54	134.00
Max.MCP (€/MWh)	306.92	345.76	200.89	140.91	215.52	178.23	272.84
Min.MCP (€/MWh)	89.00	82.79	89.14	86.73	88.82	1.00	42.85
	↗ 4%	↘ -9%	↘ -1%	↘ -5%	↗ 10%	→ 0%	↘ -2%
Tot.Vol(GWh)	334.04	302.36	298.18	282.98	310.32	309.97	304.98

Trades by Order Type

Delivery Day		06.11	07.11	08.11	09.11	10.11	11.11	12.11	
Ord Price Type		Sell & Buy Trades in (GWh) per Price Type							(%)
PPT	(S)	47.611	33.430	42.776	45.444	47.302	42.050	37.198	24.39%
HBD	(S)	70.314	54.736	56.636	55.648	61.884	63.513	61.710	40.47%
BLK	(S)	42.602	47.978	35.079	35.866	38.612	35.367	42.353	27.77%
CPL	(S)	6.492	15.035	14.601	4.532	7.363	14.057	11.228	7.36%
PPT	(B)	14.024	12.990	13.523	12.923	13.108	12.984	12.748	8.36%
HBD	(B)	132.005	130.874	124.020	114.001	127.947	128.127	125.602	82.37%
BLK	(B)	0.000	0.000	0.000	0.000	0.000	0.000	0.000	0.00%
CPL	(B)	20.990	7.315	11.549	14.565	14.105	13.876	14.139	9.27%
		Sell & Buy Orders Traded per Price Type							(%)
PPT	(S)	1513	1567	1564	1572	1550	1557	1541	35.53%
HBD	(S)	2625	2568	2527	2522	2662	2688	2781	64.12%
BLK	(S)	18	15	10	14	10	12	15	0.35%
PPT	(B)	2303	2245	2290	2314	2270	2248	2259	36.36%
HBD	(B)	4190	4159	4118	4314	4019	4218	3954	63.64%
BLK	(B)	0	0	0	0	0	0	0	0.00%

MCP	Market Clearing Price (€/MWh)
PPT	Priority Price-Taking
HBD	Hybrid
BLK	Block
CPL	Market Coupling Flow

Trade's Volume Mix

		Sell - MWh	Buy - MWh	
Lignite	(2.9%)	4,440	0	(0.0%)
Crete Conv.	(1.3%)	1,940	0	(0.0%)
Gas	(42.2%)	64,365	0	(0.0%)
Hydro	(2.4%)	3,637	0	(0.0%)
Imports	(11.2%)	17,130		
RES	(39.3%)	59,886	677	(0.4%)
Crete RES	(0.7%)	1,092	0	(0.0%)
HV Load	(0.0%)	0	18,621	(12.2%)
MV Load	(0.0%)	0	32,337	(21.2%)
LV Load	(0.0%)	0	70,462	(46.2%)
Crete Load	(0.0%)	0	6,601	(4.3%)
Pumping	(0.0%)	0	1,616	(1.1%)
Exports			19,719	(12.9%)
Sys.Losses	(0.0%)	0	2,455	(1.6%)
D/R Load	(0.0%)	0	0	(0.0%)

