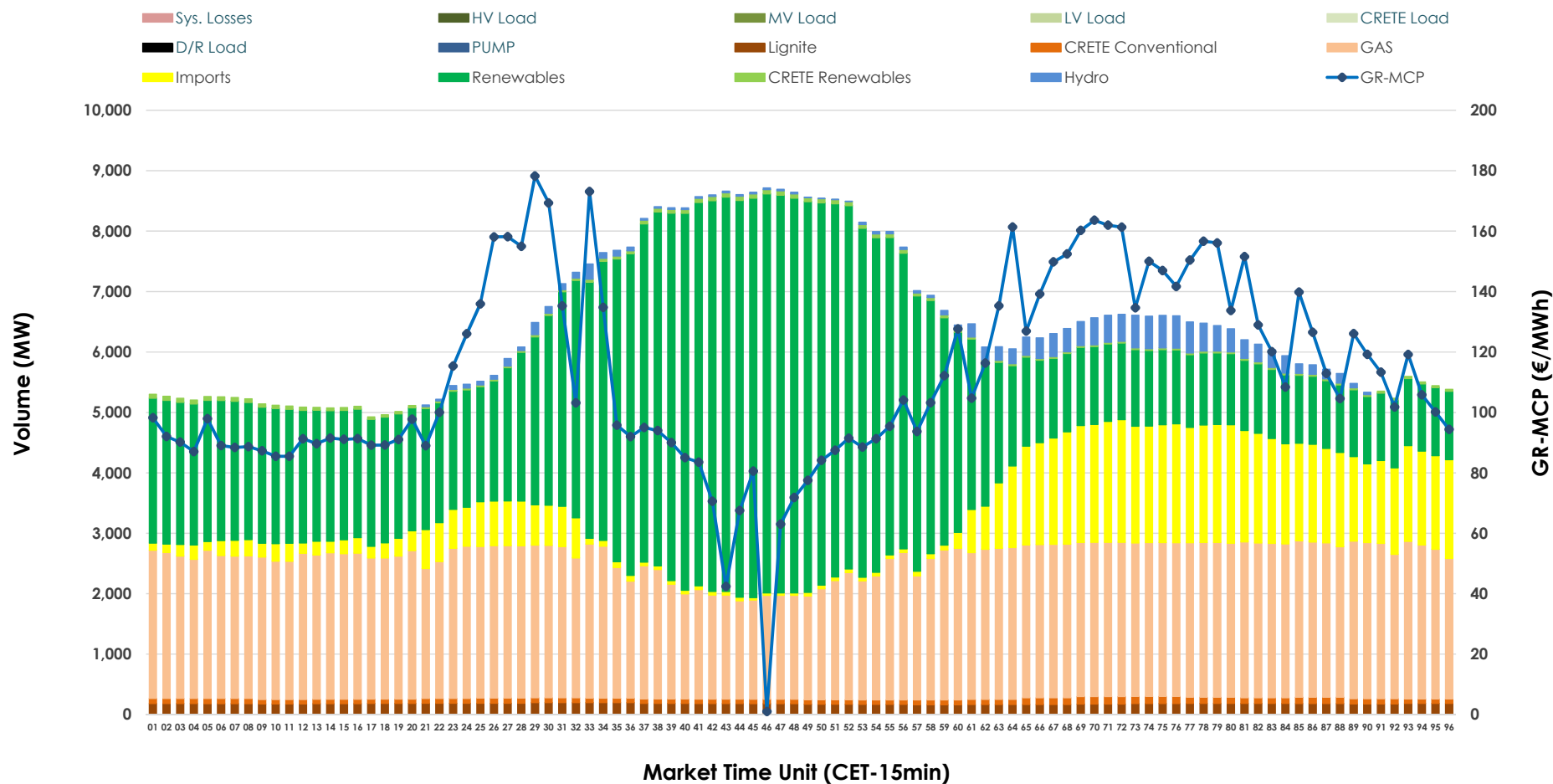


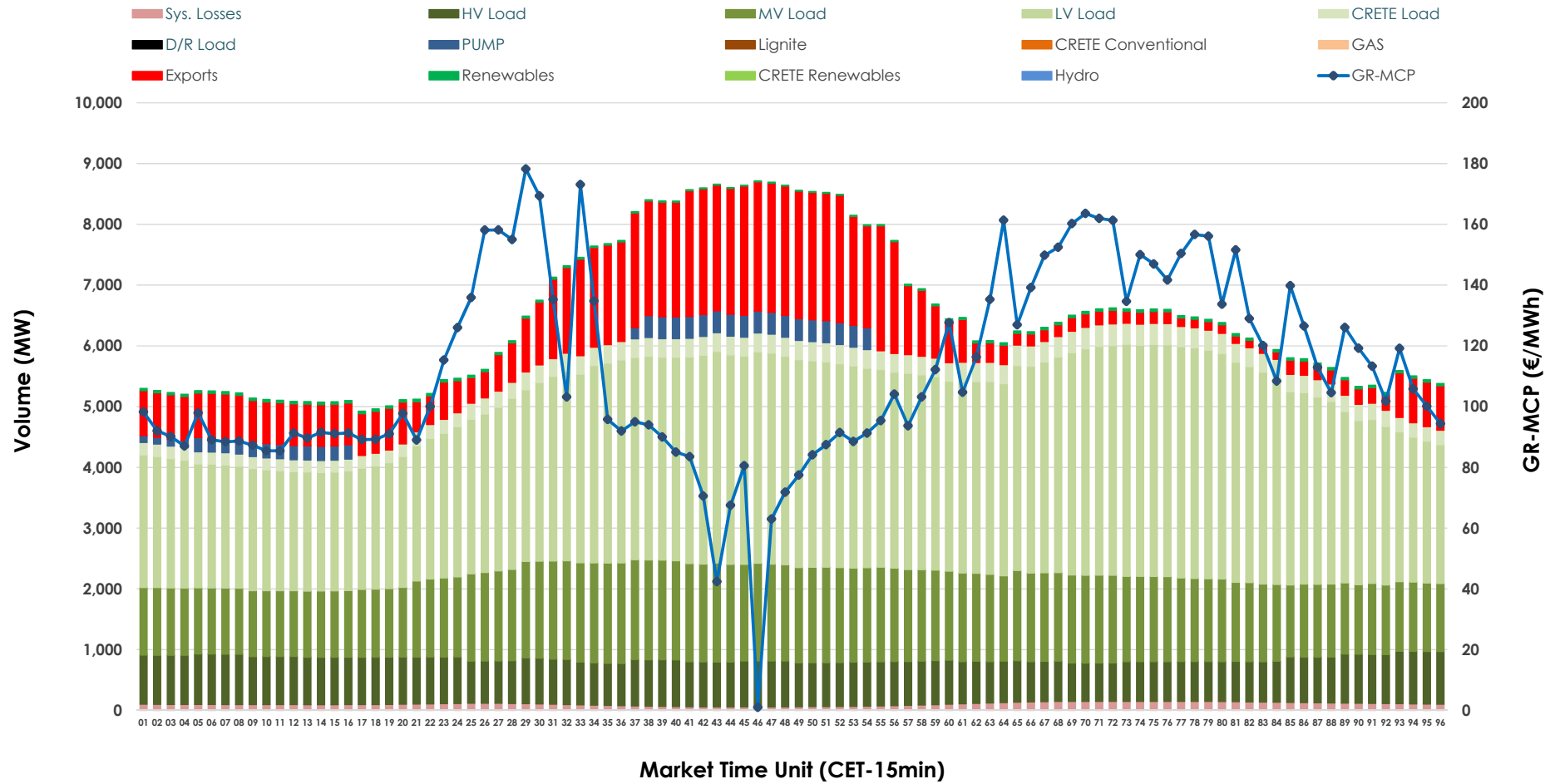


Day-Ahead Market Outlook

11.11.2025 Day-Ahead Market - Sell



11.11.2025 Day-Ahead Market - Buy



GR Bidding Zone Weekly Figures

Delivery Day	05.11	06.11	07.11	08.11	09.11	10.11	11.11
	⬇️ -5%	⬆️ 6%	⬆️ 3%	⬇️ -17%	⬆️ -5%	⬆️ 16%	⬇️ -9%
Avg.MCP (€/MWh)	123.20	130.70	134.73	111.31	105.54	122.23	111.54
Max.MCP (€/MWh)	273.24	306.92	345.76	200.89	140.91	215.52	178.23
Min.MCP (€/MWh)	78.85	89.00	82.79	89.14	86.73	88.82	1.00
	⬆️ 10%	⬆️ 4%	⬇️ -9%	⬇️ -1%	⬇️ -5%	⬆️ 10%	➡️ 0%
Tot.Vol(GWh)	321.24	334.04	302.36	298.18	282.98	310.32	309.97

Trades by Order Type

Delivery Day		05.11	06.11	07.11	08.11	09.11	10.11	11.11	
Ord Price Type		Sell & Buy Trades in (GWh) per Price Type							(%)
PPT	(S)	46.541	47.611	33.430	42.776	45.444	47.302	42.050	27.13%
HBD	(S)	62.868	70.314	54.736	56.636	55.648	61.884	63.513	40.98%
BLK	(S)	42.839	42.602	47.978	35.079	35.866	38.612	35.367	22.82%
CPL	(S)	8.372	6.492	15.035	14.601	4.532	7.363	14.057	9.07%
PPT	(B)	14.055	14.024	12.990	13.523	12.923	13.108	12.984	8.38%
HBD	(B)	133.049	132.005	130.874	124.020	114.001	127.947	128.127	82.67%
BLK	(B)	0.000	0.000	0.000	0.000	0.000	0.000	0.000	0.00%
CPL	(B)	13.515	20.990	7.315	11.549	14.565	14.105	13.876	8.95%
		Sell & Buy Orders Traded per Price Type							(%)
PPT	(S)	1484	1513	1567	1564	1572	1550	1557	36.58%
HBD	(S)	2598	2625	2568	2527	2522	2662	2688	63.14%
BLK	(S)	15	18	15	10	14	10	12	0.28%
PPT	(B)	2291	2303	2245	2290	2314	2270	2248	34.77%
HBD	(B)	4299	4190	4159	4118	4314	4019	4218	65.23%
BLK	(B)	0	0	0	0	0	0	0	0.00%

MCP	Market Clearing Price (€/MWh)
PPT	Priority Price-Taking
HBD	Hybrid
BLK	Block
CPL	Market Coupling Flow

Trade's Volume Mix

		Sell - MWh	Buy - MWh	
Lignite	(2.8%)	4,307	0	(0.0%)
Crete Conv.	(1.3%)	2,049	0	(0.0%)
Gas	(36.3%)	56,224	0	(0.0%)
Hydro	(2.0%)	3,032	0	(0.0%)
Imports	(12.0%)	18,573		
RES	(45.0%)	69,733	819	(0.5%)
Crete RES	(0.7%)	1,070	0	(0.0%)
HV Load	(0.0%)	0	17,734	(11.4%)
MV Load	(0.0%)	0	32,873	(21.2%)
LV Load	(0.0%)	0	71,088	(45.9%)
Crete Load	(0.0%)	0	6,753	(4.4%)
Pumping	(0.0%)	0	2,391	(1.5%)
Exports			20,830	(13.4%)
Sys.Losses	(0.0%)	0	2,500	(1.6%)
D/R Load	(0.0%)	0	0	(0.0%)

