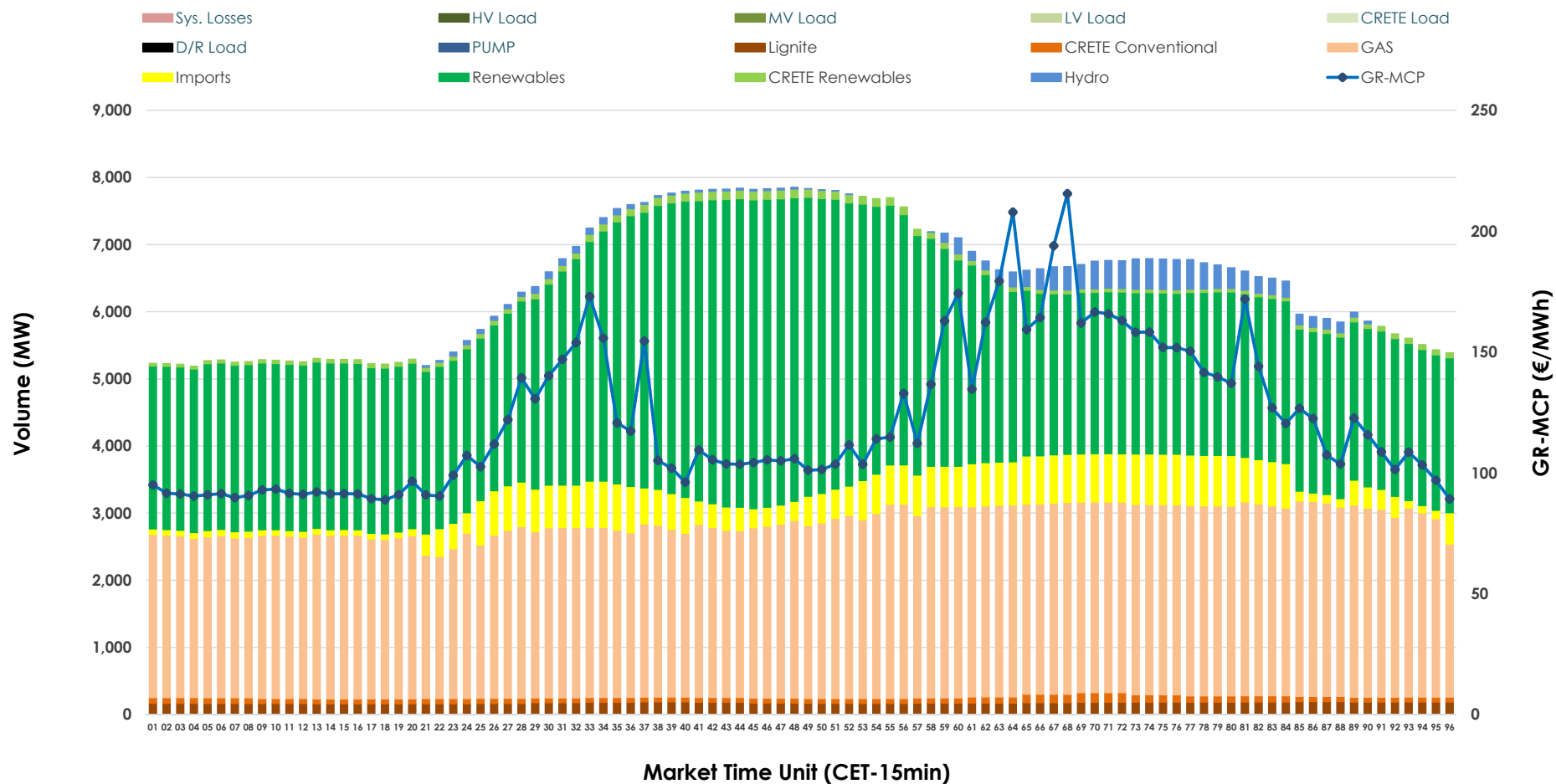


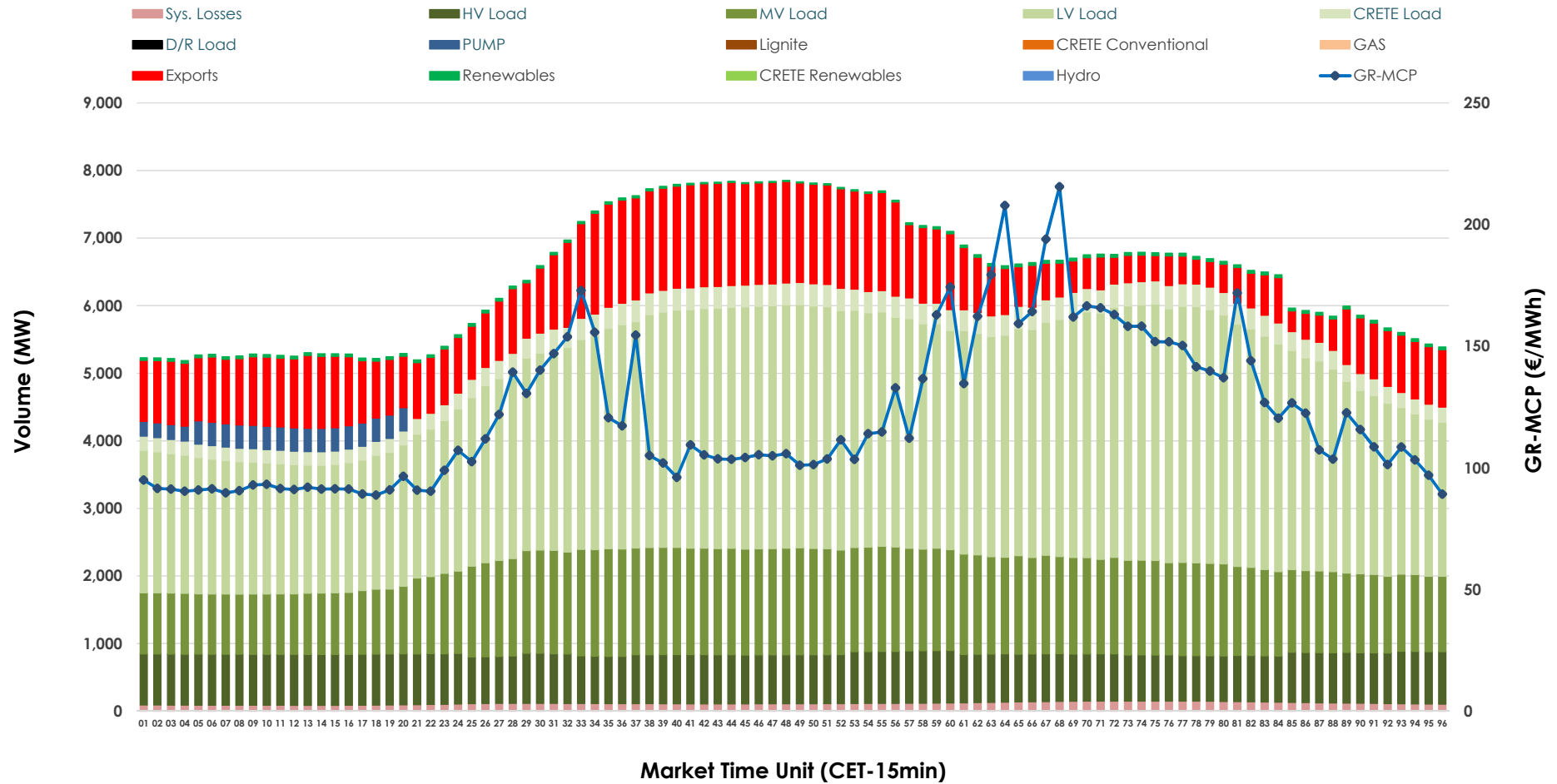


Day-Ahead Market Outlook

10.11.2025 Day-Ahead Market - Sell



10.11.2025 Day-Ahead Market - Buy



GR Bidding Zone Weekly Figures

Delivery Day	04.11	05.11	06.11	07.11	08.11	09.11	10.11
	↗ 13%	↘ -5%	↗ 6%	↗ 3%	↘ -17%	↘ -5%	↗ 16%
Avg.MCP (€/MWh)	130.03	123.20	130.70	134.73	111.31	105.54	122.23
Max.MCP (€/MWh)	302.31	273.24	306.92	345.76	200.89	140.91	215.52
Min.MCP (€/MWh)	81.53	78.85	89.00	82.79	89.14	86.73	88.82
	↗ 7%	↗ 10%	↗ 4%	↘ -9%	↘ -1%	↘ -5%	↗ 10%
Tot.Vol(GWh)	292.91	321.24	334.04	302.36	298.18	282.98	310.32

Trades by Order Type

Delivery Day		04.11	05.11	06.11	07.11	08.11	09.11	10.11	
Ord Price Type		Sell & Buy Trades in (GWh) per Price Type							(%)
PPT	(S)	32.141	46.541	47.611	33.430	42.776	45.444	47.302	30.49%
HBD	(S)	52.245	62.868	70.314	54.736	56.636	55.648	61.884	39.88%
BLK	(S)	42.149	42.839	42.602	47.978	35.079	35.866	38.612	24.88%
CPL	(S)	19.921	8.372	6.492	15.035	14.601	4.532	7.363	4.75%
PPT	(B)	13.773	14.055	14.024	12.990	13.523	12.923	13.108	8.45%
HBD	(B)	129.978	133.049	132.005	130.874	124.020	114.001	127.947	82.46%
BLK	(B)	0.000	0.000	0.000	0.000	0.000	0.000	0.000	0.00%
CPL	(B)	2.706	13.515	20.990	7.315	11.549	14.565	14.105	9.09%
		Sell & Buy Orders Traded per Price Type							(%)
PPT	(S)	1565	1484	1513	1567	1564	1572	1550	36.71%
HBD	(S)	2656	2598	2625	2568	2527	2522	2662	63.05%
BLK	(S)	14	15	18	15	10	14	10	0.24%
PPT	(B)	2250	2291	2303	2245	2290	2314	2270	36.09%
HBD	(B)	4175	4299	4190	4159	4118	4314	4019	63.91%
BLK	(B)	0	0	0	0	0	0	0	0.00%

MCP	Market Clearing Price (€/MWh)
PPT	Priority Price-Taking
HBD	Hybrid
BLK	Block
CPL	Market Coupling Flow

Trade's Volume Mix

		Sell - MWh	Buy - MWh	
Lignite	(2.7%)	4,172	0	(0.0%)
Crete Conv.	(1.3%)	2,015	0	(0.0%)
Gas	(40.6%)	63,018	0	(0.0%)
Hydro	(1.7%)	2,582	0	(0.0%)
Imports	(6.7%)	10,471		
RES	(45.8%)	71,062	851	(0.5%)
Crete RES	(1.2%)	1,841	0	(0.0%)
HV Load	(0.0%)	0	17,531	(11.3%)
MV Load	(0.0%)	0	31,468	(20.3%)
LV Load	(0.0%)	0	71,393	(46.0%)
Crete Load	(0.0%)	0	6,791	(4.4%)
Pumping	(0.0%)	0	1,600	(1.0%)
Exports			22,772	(14.7%)
Sys.Losses	(0.0%)	0	2,754	(1.8%)
D/R Load	(0.0%)	0	0	(0.0%)

