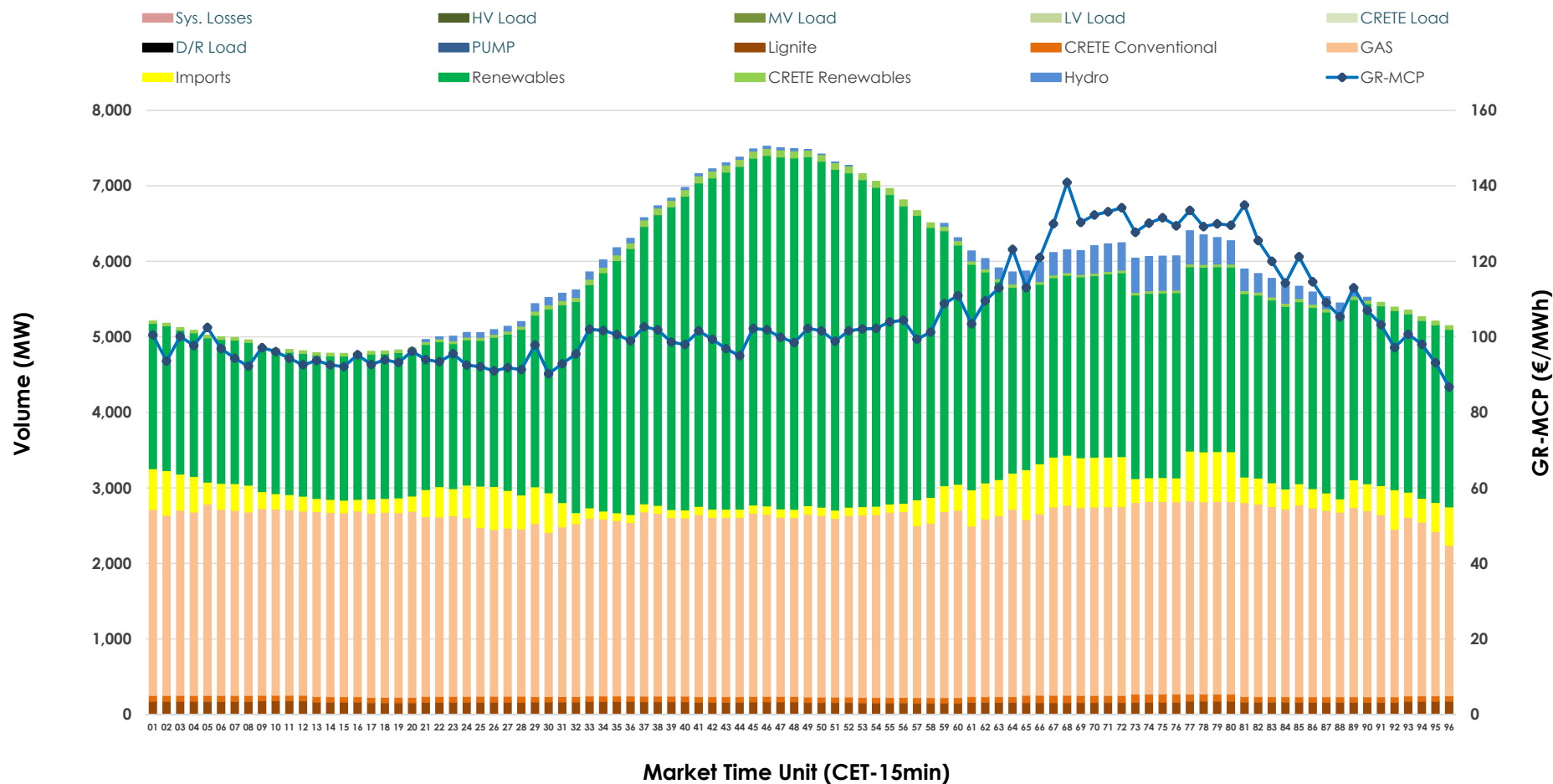


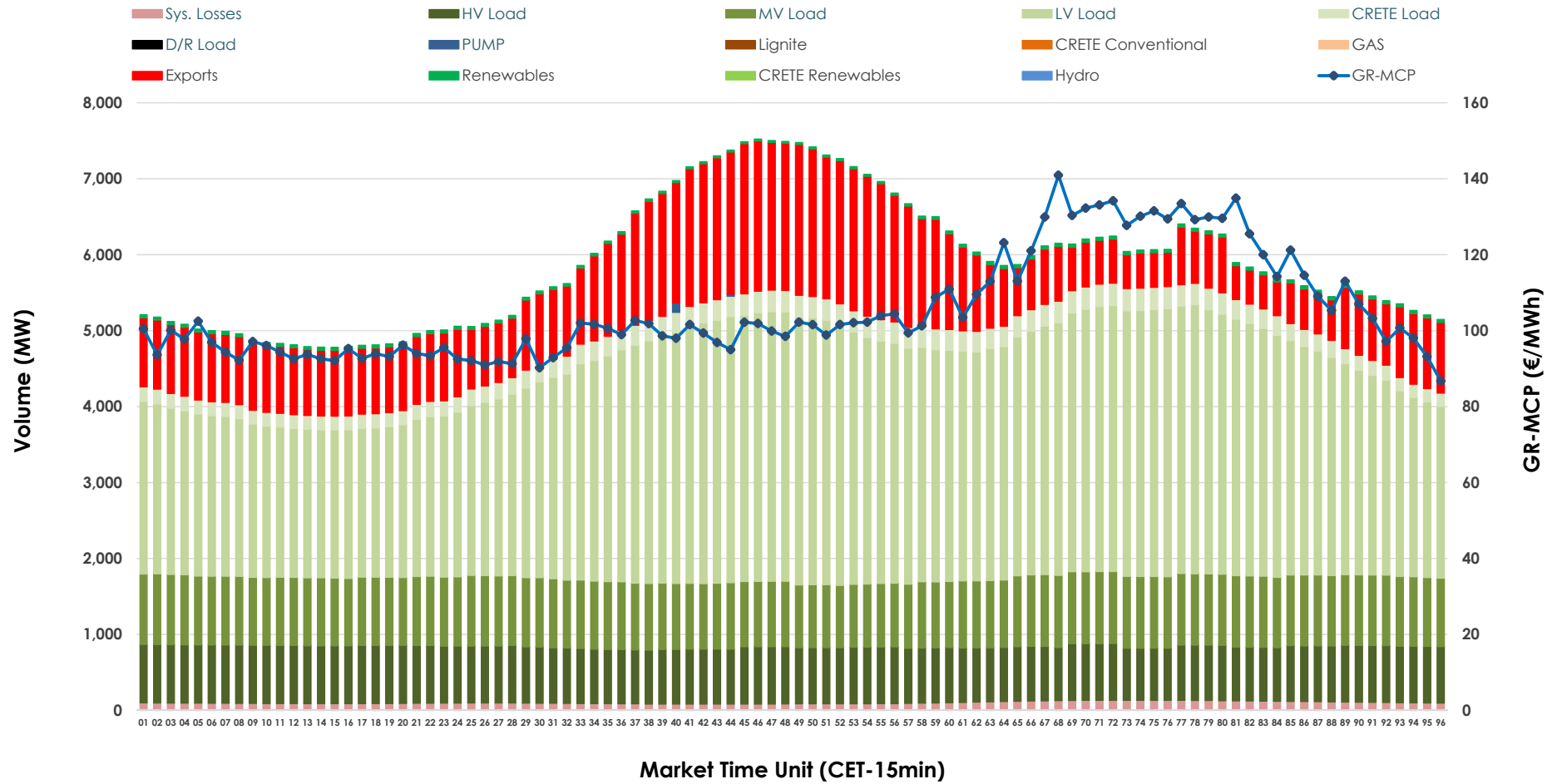


Day-Ahead Market Outlook

09.11.2025 Day-Ahead Market - Sell



09.11.2025 Day-Ahead Market - Buy



GR Bidding Zone Weekly Figures

Delivery Day	03.11	04.11	05.11	06.11	07.11	08.11	09.11
	↑ 37%	↗ 13%	↓ -5%	↗ 6%	↘ 3%	↓ -17%	↓ -5%
Avg.MCP (€/MWh)	115.28	130.03	123.20	130.70	134.73	111.31	105.54
Max.MCP (€/MWh)	254.04	302.31	273.24	306.92	345.76	200.89	140.91
Min.MCP (€/MWh)	0.00	81.53	78.85	89.00	82.79	89.14	86.73
	↗ 9%	↗ 7%	↗ 10%	↘ 4%	↓ -9%	↓ -1%	↓ -5%
Tot.Vol(GWh)	274.02	292.91	321.24	334.04	302.36	298.18	282.98

Trades by Order Type

Delivery Day		03.11	04.11	05.11	06.11	07.11	08.11	09.11	
Ord Price Type		Sell & Buy Trades in (GWh) per Price Type							(%)
PPT	(S)	31.177	32.141	46.541	47.611	33.430	42.776	45.444	32.12%
HBD	(S)	55.115	52.245	62.868	70.314	54.736	56.636	55.648	39.33%
BLK	(S)	41.176	42.149	42.839	42.602	47.978	35.079	35.866	25.35%
CPL	(S)	9.544	19.921	8.372	6.492	15.035	14.601	4.532	3.20%
PPT	(B)	14.766	13.773	14.055	14.024	12.990	13.523	12.923	9.13%
HBD	(B)	104.549	129.978	133.049	132.005	130.874	124.020	114.001	80.57%
BLK	(B)	0.000	0.000	0.000	0.000	0.000	0.000	0.000	0.00%
CPL	(B)	17.698	2.706	13.515	20.990	7.315	11.549	14.565	10.29%
		Sell & Buy Orders Traded per Price Type							(%)
PPT	(S)	1337	1565	1484	1513	1567	1564	1572	38.27%
HBD	(S)	2541	2656	2598	2625	2568	2527	2522	61.39%
BLK	(S)	21	14	15	18	15	10	14	0.34%
PPT	(B)	2304	2250	2291	2303	2245	2290	2314	34.91%
HBD	(B)	4111	4175	4299	4190	4159	4118	4314	65.09%
BLK	(B)	0	0	0	0	0	0	0	0.00%

MCP	Market Clearing Price (€/MWh)
PPT	Priority Price-Taking
HBD	Hybrid
BLK	Block
CPL	Market Coupling Flow

Trade's Volume Mix

		Sell - MWh	Buy - MWh	
Lignite	(2.8%)	3,974	0	(0.0%)
Crete Conv.	(1.3%)	1,881	0	(0.0%)
Gas	(40.9%)	57,861	0	(0.0%)
Hydro	(1.7%)	2,391	0	(0.0%)
Imports	(5.5%)	7,822		
RES	(46.9%)	66,305	889	(0.6%)
Crete RES	(0.9%)	1,255	0	(0.0%)
HV Load	(0.0%)	0	17,727	(12.5%)
MV Load	(0.0%)	0	21,649	(15.3%)
LV Load	(0.0%)	0	68,215	(48.2%)
Crete Load	(0.0%)	0	5,779	(4.1%)
Pumping	(0.0%)	0	38	(0.0%)
Exports			24,762	(17.5%)
Sys.Losses	(0.0%)	0	2,430	(1.7%)
D/R Load	(0.0%)	0	0	(0.0%)

