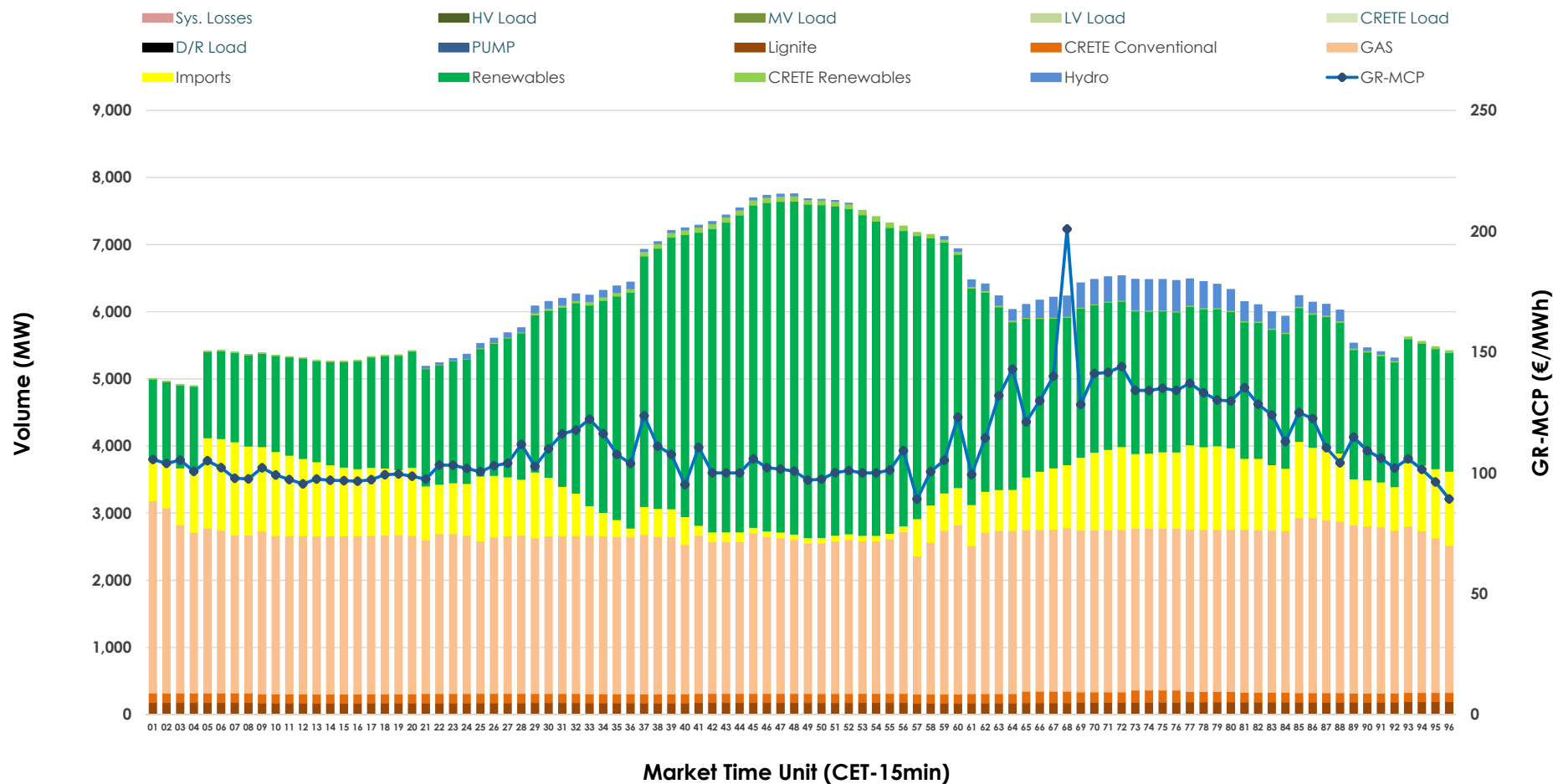


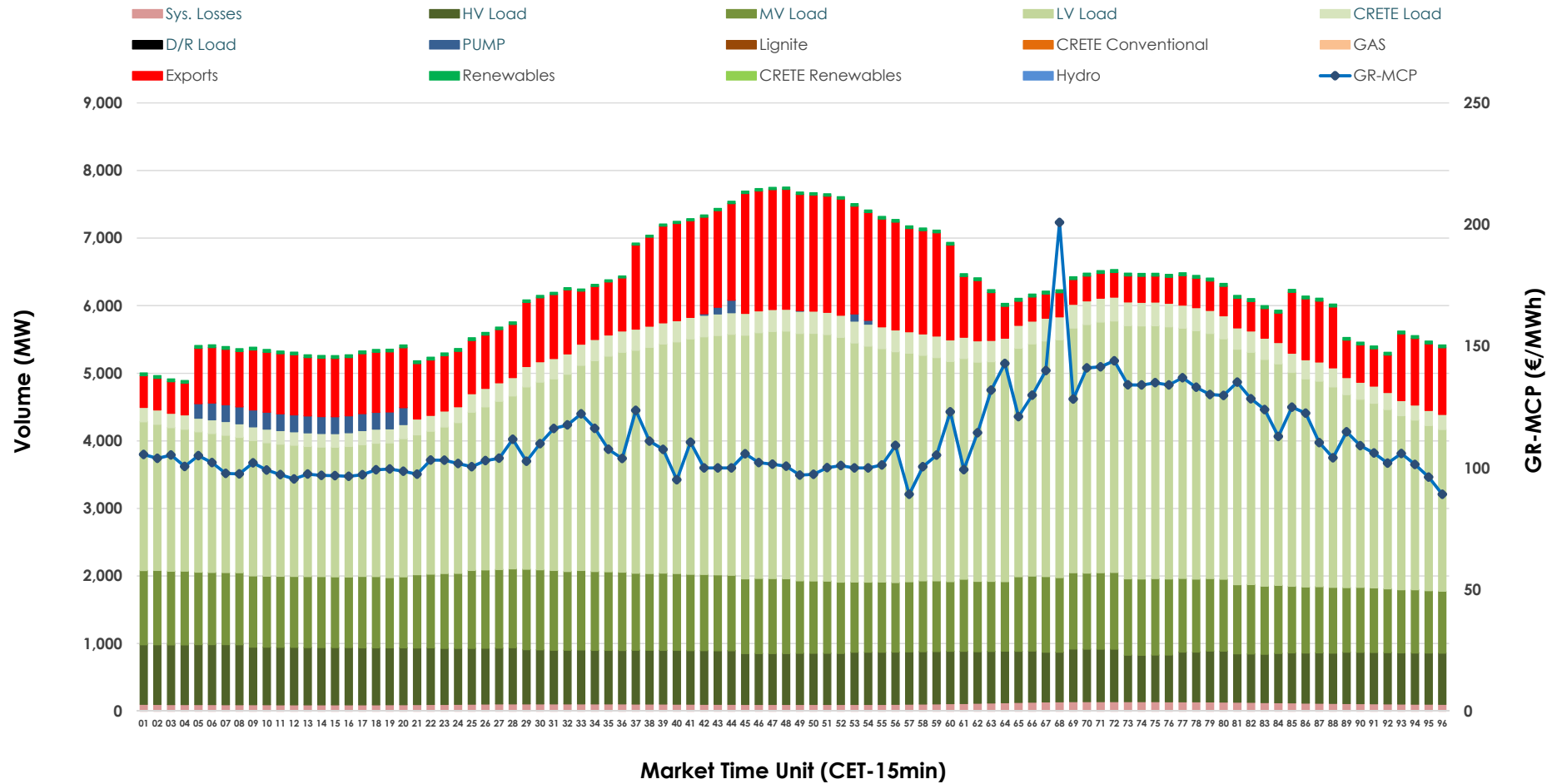


Day-Ahead Market Outlook

08.11.2025 Day-Ahead Market - Sell



08.11.2025 Day-Ahead Market - Buy



GR Bidding Zone Weekly Figures

Delivery Day	02.11	03.11	04.11	05.11	06.11	07.11	08.11
	⬇️ -2%	⬆️ 37%	⬆️ 13%	⬇️ -5%	⬆️ 6%	⬆️ 3%	⬇️ -17%
Avg.MCP (€/MWh)	84.26	115.28	130.03	123.20	130.70	134.73	111.31
Max.MCP (€/MWh)	154.89	254.04	302.31	273.24	306.92	345.76	200.89
Min.MCP (€/MWh)	5.12	0.00	81.53	78.85	89.00	82.79	89.14
	⬇️ -4%	⬆️ 9%	⬆️ 7%	⬆️ 10%	⬆️ 4%	⬇️ -9%	⬇️ -1%
Tot.Vol(GWh)	251.18	274.02	292.91	321.24	334.04	302.36	298.18

Trades by Order Type

Delivery Day		02.11	03.11	04.11	05.11	06.11	07.11	08.11	
Ord Price Type		Sell & Buy Trades in (GWh) per Price Type							(%)
PPT	(S)	30.575	31.177	32.141	46.541	47.611	33.430	42.776	28.69%
HBD	(S)	47.851	55.115	52.245	62.868	70.314	54.736	56.636	37.99%
BLK	(S)	31.905	41.176	42.149	42.839	42.602	47.978	35.079	23.53%
CPL	(S)	15.260	9.544	19.921	8.372	6.492	15.035	14.601	9.79%
PPT	(B)	13.332	14.766	13.773	14.055	14.024	12.990	13.523	9.07%
HBD	(B)	109.566	104.549	129.978	133.049	132.005	130.874	124.020	83.18%
BLK	(B)	0.000	0.000	0.000	0.000	0.000	0.000	0.000	0.00%
CPL	(B)	2.693	17.698	2.706	13.515	20.990	7.315	11.549	7.75%
		Sell & Buy Orders Traded per Price Type							(%)
PPT	(S)	1451	1337	1565	1484	1513	1567	1564	38.14%
HBD	(S)	2433	2541	2656	2598	2625	2568	2527	61.62%
BLK	(S)	14	21	14	15	18	15	10	0.24%
PPT	(B)	2256	2304	2250	2291	2303	2245	2290	35.74%
HBD	(B)	4197	4111	4175	4299	4190	4159	4118	64.26%
BLK	(B)	0	0	0	0	0	0	0	0.00%

MCP	Market Clearing Price (€/MWh)
PPT	Priority Price-Taking
HBD	Hybrid
BLK	Block
CPL	Market Coupling Flow

Trade's Volume Mix

		Sell - MWh	Buy - MWh	
Lignite	(2.9%)	4,270	0	(0.0%)
Crete Conv.	(2.3%)	3,431	0	(0.0%)
Gas	(38.4%)	57,179	0	(0.0%)
Hydro	(1.6%)	2,391	0	(0.0%)
Imports	(12.3%)	18,308		
RES	(42.1%)	62,777	912	(0.6%)
Crete RES	(0.5%)	737	0	(0.0%)
HV Load	(0.0%)	0	18,906	(12.7%)
MV Load	(0.0%)	0	25,808	(17.3%)
LV Load	(0.0%)	0	71,065	(47.7%)
Crete Load	(0.0%)	0	6,848	(4.6%)
Pumping	(0.0%)	0	1,112	(0.7%)
Exports			21,789	(14.6%)
Sys.Losses	(0.0%)	0	2,652	(1.8%)
D/R Load	(0.0%)	0	0	(0.0%)

