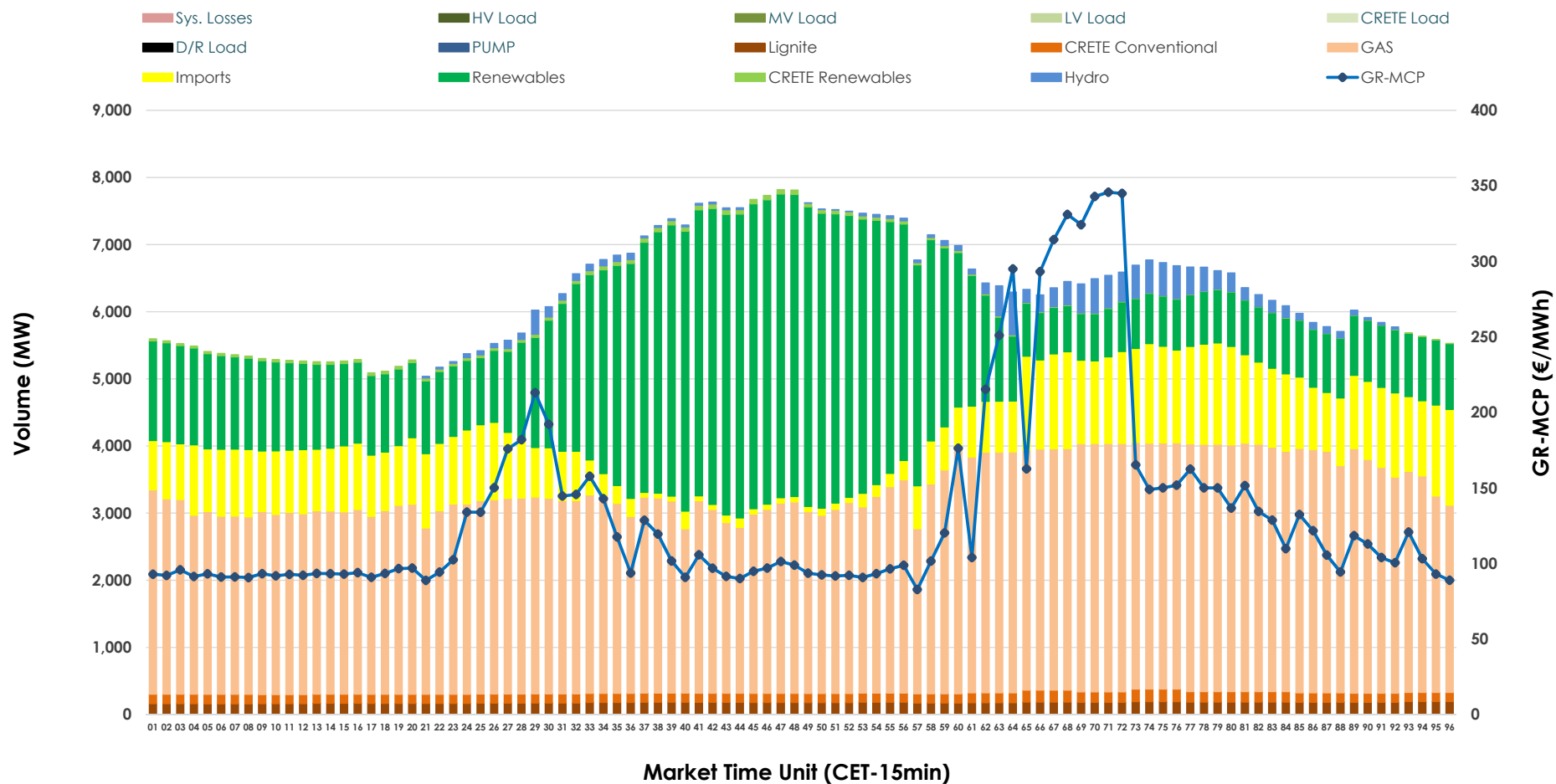


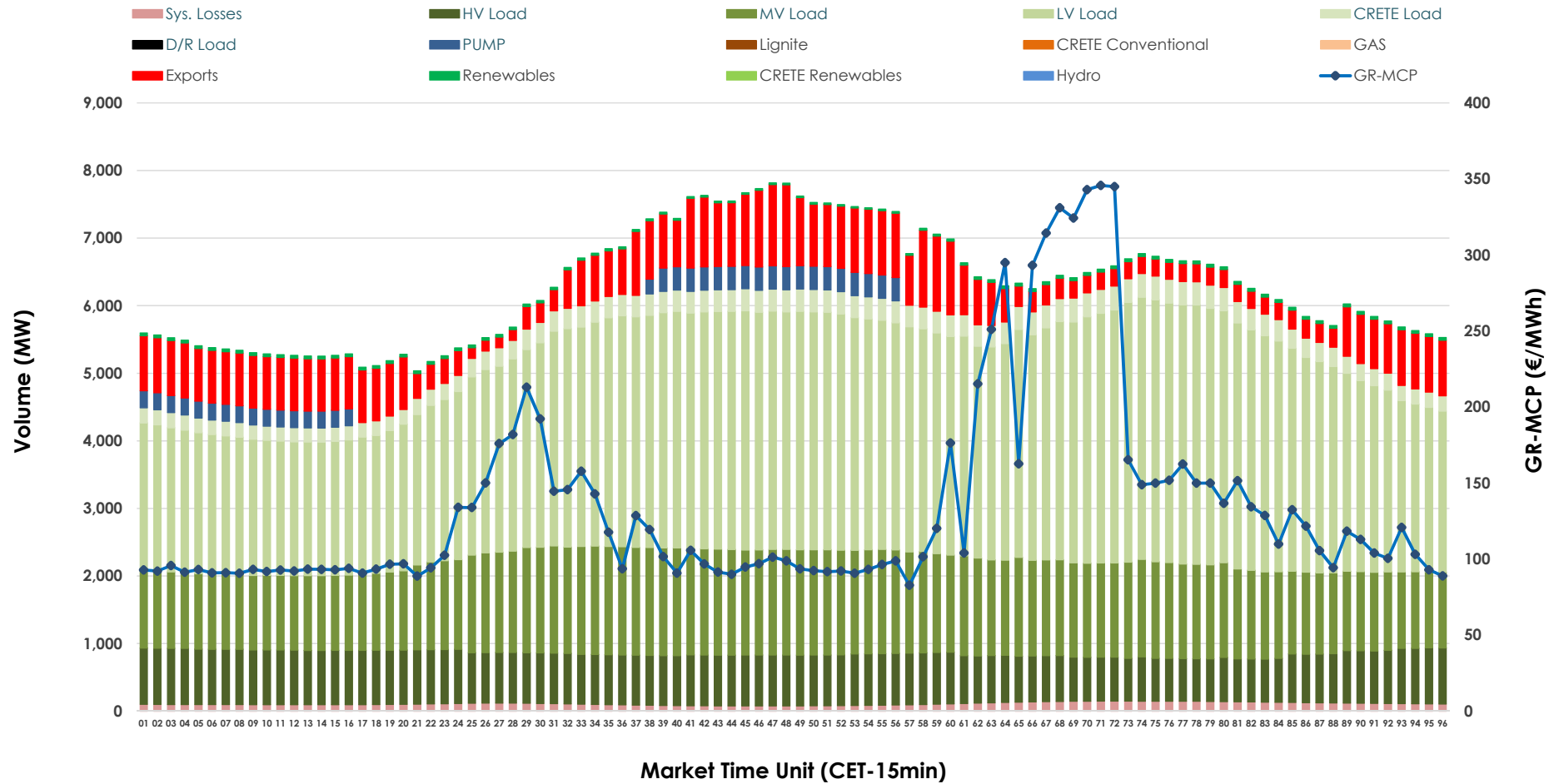


## Day-Ahead Market Outlook

07.11.2025 Day-Ahead Market - Sell



## 07.11.2025 Day-Ahead Market - Buy



### GR Bidding Zone Weekly Figures

Delivery Day	01.11	02.11	03.11	04.11	05.11	06.11	07.11
	↓ -38%	↘ -2%	↑ 37%	↗ 13%	↘ -5%	↗ 6%	↗ 3%
Avg.MCP (€/MWh)	85.75	84.26	115.28	130.03	123.20	130.70	134.73
Max.MCP (€/MWh)	198.97	154.89	254.04	302.31	273.24	306.92	345.76
Min.MCP (€/MWh)	14.40	5.12	0.00	81.53	78.85	89.00	82.79
	↘ -4%	↘ -4%	↗ 9%	↗ 7%	↗ 10%	↗ 4%	↘ -9%
Tot.Vol(GWh)	261.01	251.18	274.02	292.91	321.24	334.04	302.36

### Trades by Order Type

Delivery Day		01.11	02.11	03.11	04.11	05.11	06.11	07.11	
Ord Price Type		Sell & Buy Trades in (GWh) per Price Type							(%)
PPT	(S)	30.171	30.575	31.177	32.141	46.541	47.611	33.430	22.11%
HBD	(S)	49.312	47.851	55.115	52.245	62.868	70.314	54.736	36.21%
BLK	(S)	37.250	31.905	41.176	42.149	42.839	42.602	47.978	31.74%
CPL	(S)	13.771	15.260	9.544	19.921	8.372	6.492	15.035	9.94%
PPT	(B)	13.374	13.332	14.766	13.773	14.055	14.024	12.990	8.59%
HBD	(B)	117.129	109.566	104.549	129.978	133.049	132.005	130.874	86.57%
BLK	(B)	0.000	0.000	0.000	0.000	0.000	0.000	0.000	0.00%
CPL	(B)	0.001	2.693	17.698	2.706	13.515	20.990	7.315	4.84%
		Sell & Buy Orders Traded per Price Type							(%)
PPT	(S)	1481	1451	1337	1565	1484	1513	1567	37.76%
HBD	(S)	2565	2433	2541	2656	2598	2625	2568	61.88%
BLK	(S)	14	14	21	14	15	18	15	0.36%
PPT	(B)	2231	2256	2304	2250	2291	2303	2245	35.06%
HBD	(B)	4213	4197	4111	4175	4299	4190	4159	64.94%
BLK	(B)	0	0	0	0	0	0	0	0.00%

<b>MCP</b>	Market Clearing Price (€/MWh)
<b>PPT</b>	Priority Price-Taking
<b>HBD</b>	Hybrid
<b>BLK</b>	Block
<b>CPL</b>	Market Coupling Flow

### Trade's Volume Mix

		Sell - MWh	Buy - MWh	
Lignite	(2.8%)	4,241	0	(0.0%)
Crete Conv.	(2.3%)	3,451	0	(0.0%)
Gas	(49.0%)	74,109	0	(0.0%)
Hydro	(1.8%)	2,735	0	(0.0%)
Imports	(13.3%)	20,032		
RES	(30.3%)	45,826	859	(0.6%)
Crete RES	(0.5%)	785	0	(0.0%)
HV Load	(0.0%)	0	17,904	(11.8%)
MV Load	(0.0%)	0	32,750	(21.7%)
LV Load	(0.0%)	0	72,334	(47.8%)
Crete Load	(0.0%)	0	6,932	(4.6%)
Pumping	(0.0%)	0	2,608	(1.7%)
Exports			15,176	(10.0%)
Sys.Losses	(0.0%)	0	2,617	(1.7%)
D/R Load	(0.0%)	0	0	(0.0%)

