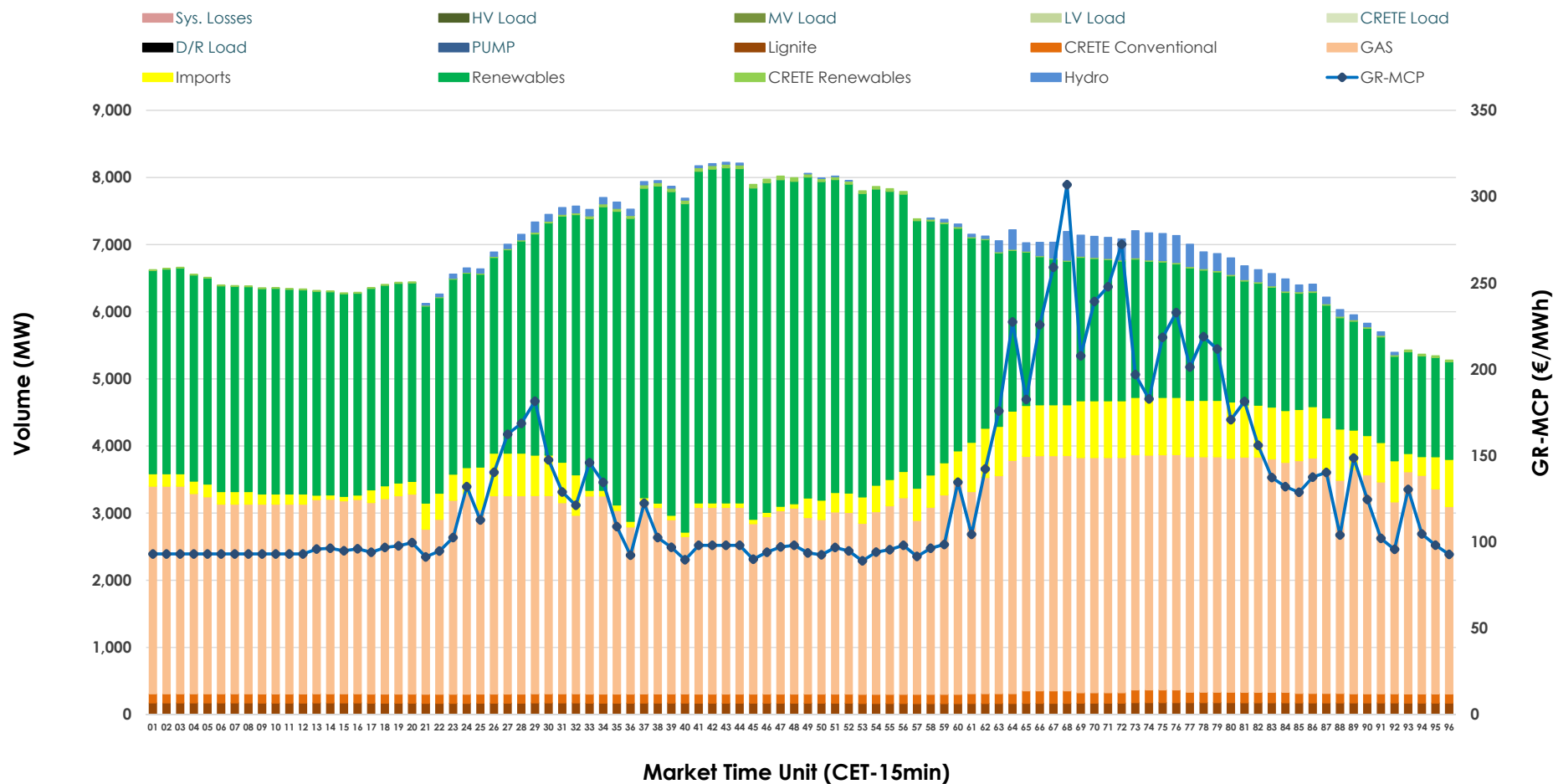


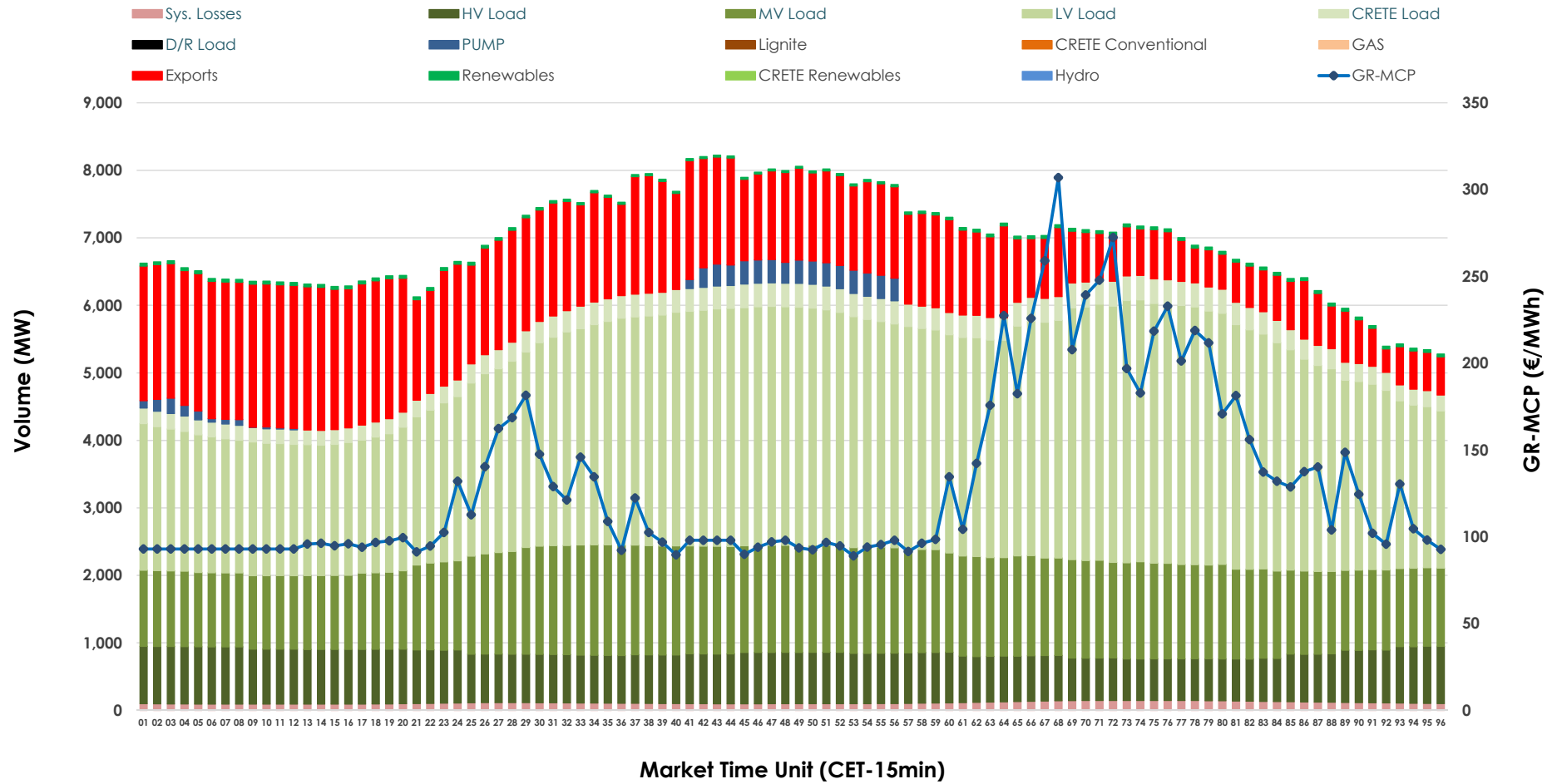


Day-Ahead Market Outlook

06.11.2025 Day-Ahead Market - Sell



06.11.2025 Day-Ahead Market - Buy



GR Bidding Zone Weekly Figures

Delivery Day	31.10	01.11	02.11	03.11	04.11	05.11	06.11
	↗ 25%	↘ -38%	↘ -2%	↗ 37%	↘ 13%	↘ -5%	↗ 6%
Avg.MCP (€/MWh)	137.55	85.75	84.26	115.28	130.03	123.20	130.70
Max.MCP (€/MWh)	305.72	198.97	154.89	254.04	302.31	273.24	306.92
Min.MCP (€/MWh)	69.80	14.40	5.12	0.00	81.53	78.85	89.00
	↘ -3%	↘ -4%	↘ -4%	↗ 9%	↗ 7%	↗ 10%	↗ 4%
Tot.Vol(GWh)	272.62	261.01	251.18	274.02	292.91	321.24	334.04

Trades by Order Type

Delivery Day		31.10	01.11	02.11	03.11	04.11	05.11	06.11	
Ord Price Type		Sell & Buy Trades in (GWh) per Price Type							(%)
PPT	(S)	28.249	30.171	30.575	31.177	32.141	46.541	47.611	28.51%
HBD	(S)	54.360	49.312	47.851	55.115	52.245	62.868	70.314	42.10%
BLK	(S)	43.564	37.250	31.905	41.176	42.149	42.839	42.602	25.51%
CPL	(S)	10.139	13.771	15.260	9.544	19.921	8.372	6.492	3.89%
PPT	(B)	14.148	13.374	13.332	14.766	13.773	14.055	14.024	8.40%
HBD	(B)	121.714	117.129	109.566	104.549	129.978	133.049	132.005	79.04%
BLK	(B)	0.000	0.000	0.000	0.000	0.000	0.000	0.000	0.00%
CPL	(B)	0.449	0.001	2.693	17.698	2.706	13.515	20.990	12.57%
		Sell & Buy Orders Traded per Price Type							(%)
PPT	(S)	1544	1481	1451	1337	1565	1484	1513	36.41%
HBD	(S)	2614	2565	2433	2541	2656	2598	2625	63.16%
BLK	(S)	13	14	14	21	14	15	18	0.43%
PPT	(B)	2201	2231	2256	2304	2250	2291	2303	35.47%
HBD	(B)	3871	4213	4197	4111	4175	4299	4190	64.53%
BLK	(B)	0	0	0	0	0	0	0	0.00%

MCP	Market Clearing Price (€/MWh)
PPT	Priority Price-Taking
HBD	Hybrid
BLK	Block
CPL	Market Coupling Flow

Trade's Volume Mix

		Sell - MWh	Buy - MWh	
Lignite	(2.5%)	4,103	0	(0.0%)
Crete Conv.	(2.1%)	3,445	0	(0.0%)
Gas	(43.4%)	72,569	0	(0.0%)
Hydro	(1.2%)	2,084	0	(0.0%)
Imports	(6.3%)	10,439		
RES	(44.2%)	73,757	895	(0.5%)
Crete RES	(0.4%)	621	0	(0.0%)
HV Load	(0.0%)	0	17,725	(10.6%)
MV Load	(0.0%)	0	33,137	(19.8%)
LV Load	(0.0%)	0	71,859	(43.0%)
Crete Load	(0.0%)	0	7,244	(4.3%)
Pumping	(0.0%)	0	1,554	(0.9%)
Exports			31,906	(19.1%)
Sys.Losses	(0.0%)	0	2,699	(1.6%)
D/R Load	(0.0%)	0	0	(0.0%)

