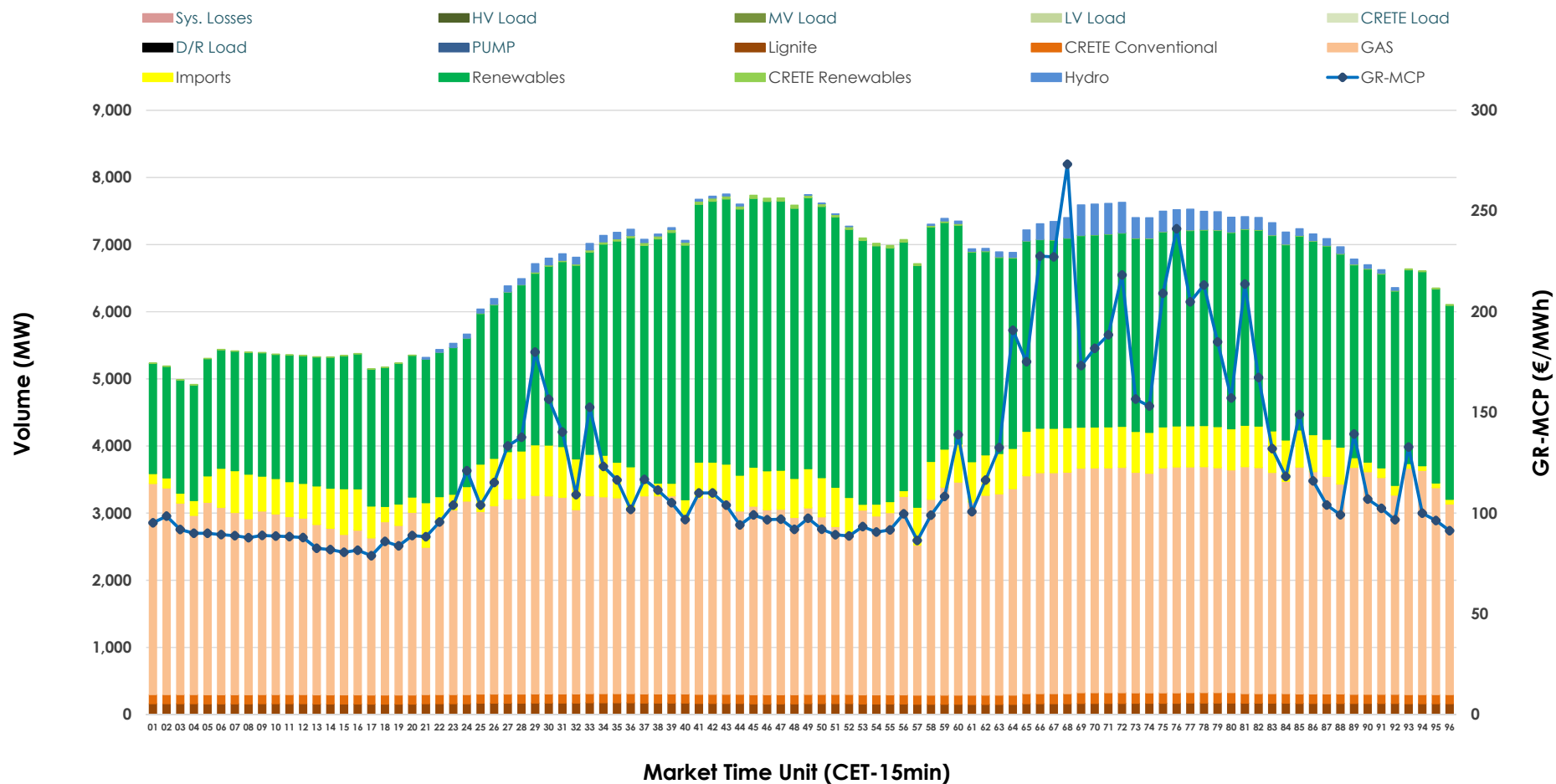


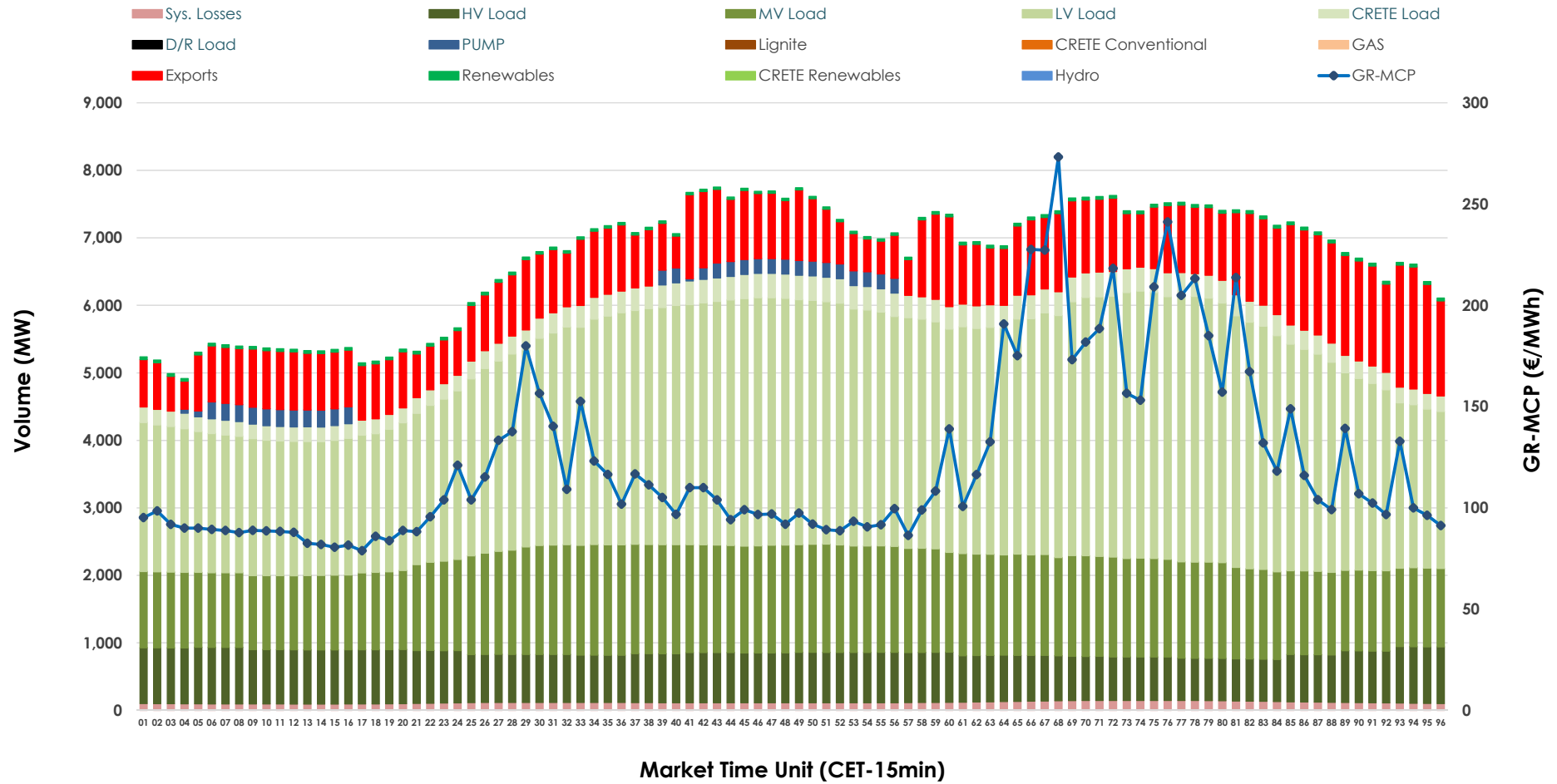


Day-Ahead Market Outlook

05.11.2025 Day-Ahead Market - Sell



05.11.2025 Day-Ahead Market - Buy



GR Bidding Zone Weekly Figures

Delivery Day	30.10	31.10	01.11	02.11	03.11	04.11	05.11
	↗ 7%	↗ 25%	↘ -38%	↘ -2%	↗ 37%	↗ 13%	↘ -5%
Avg.MCP (€/MWh)	109.88	137.55	85.75	84.26	115.28	130.03	123.20
Max.MCP (€/MWh)	241.61	305.72	198.97	154.89	254.04	302.31	273.24
Min.MCP (€/MWh)	0.01	69.80	14.40	5.12	0.00	81.53	78.85
	➡ 0%	↘ -3%	↘ -4%	↘ -4%	↗ 9%	↗ 7%	↗ 10%
Tot.Vol(GWh)	281.56	272.62	261.01	251.18	274.02	292.91	321.24

Trades by Order Type

Delivery Day		30.10	31.10	01.11	02.11	03.11	04.11	05.11	
Ord Price Type		Sell & Buy Trades in (GWh) per Price Type							(%)
PPT	(S)	31.064	28.249	30.171	30.575	31.177	32.141	46.541	28.98%
HBD	(S)	57.212	54.360	49.312	47.851	55.115	52.245	62.868	39.14%
BLK	(S)	41.085	43.564	37.250	31.905	41.176	42.149	42.839	26.67%
CPL	(S)	11.419	10.139	13.771	15.260	9.544	19.921	8.372	5.21%
PPT	(B)	14.551	14.148	13.374	13.332	14.766	13.773	14.055	8.75%
HBD	(B)	122.896	121.714	117.129	109.566	104.549	129.978	133.049	82.83%
BLK	(B)	0.000	0.000	0.000	0.000	0.000	0.000	0.000	0.00%
CPL	(B)	3.333	0.449	0.001	2.693	17.698	2.706	13.515	8.41%
		Sell & Buy Orders Traded per Price Type							(%)
PPT	(S)	1454	1544	1481	1451	1337	1565	1484	36.22%
HBD	(S)	2534	2614	2565	2433	2541	2656	2598	63.41%
BLK	(S)	19	13	14	14	21	14	15	0.37%
PPT	(B)	2273	2201	2231	2256	2304	2250	2291	34.76%
HBD	(B)	4039	3871	4213	4197	4111	4175	4299	65.24%
BLK	(B)	0	0	0	0	0	0	0	0.00%

MCP	Market Clearing Price (€/MWh)
PPT	Priority Price-Taking
HBD	Hybrid
BLK	Block
CPL	Market Coupling Flow

Trade's Volume Mix

		Sell - MWh	Buy - MWh	
Lignite	(2.4%)	3,928	0	(0.0%)
Crete Conv.	(2.1%)	3,354	0	(0.0%)
Gas	(43.9%)	70,488	0	(0.0%)
Hydro	(1.3%)	2,046	0	(0.0%)
Imports	(7.3%)	11,704		
RES	(42.8%)	68,687	929	(0.6%)
Crete RES	(0.3%)	413	0	(0.0%)
HV Load	(0.0%)	0	17,636	(11.0%)
MV Load	(0.0%)	0	33,438	(20.8%)
LV Load	(0.0%)	0	73,702	(45.9%)
Crete Load	(0.0%)	0	7,138	(4.4%)
Pumping	(0.0%)	0	1,655	(1.0%)
Exports			23,311	(14.5%)
Sys.Losses	(0.0%)	0	2,810	(1.7%)
D/R Load	(0.0%)	0	0	(0.0%)

