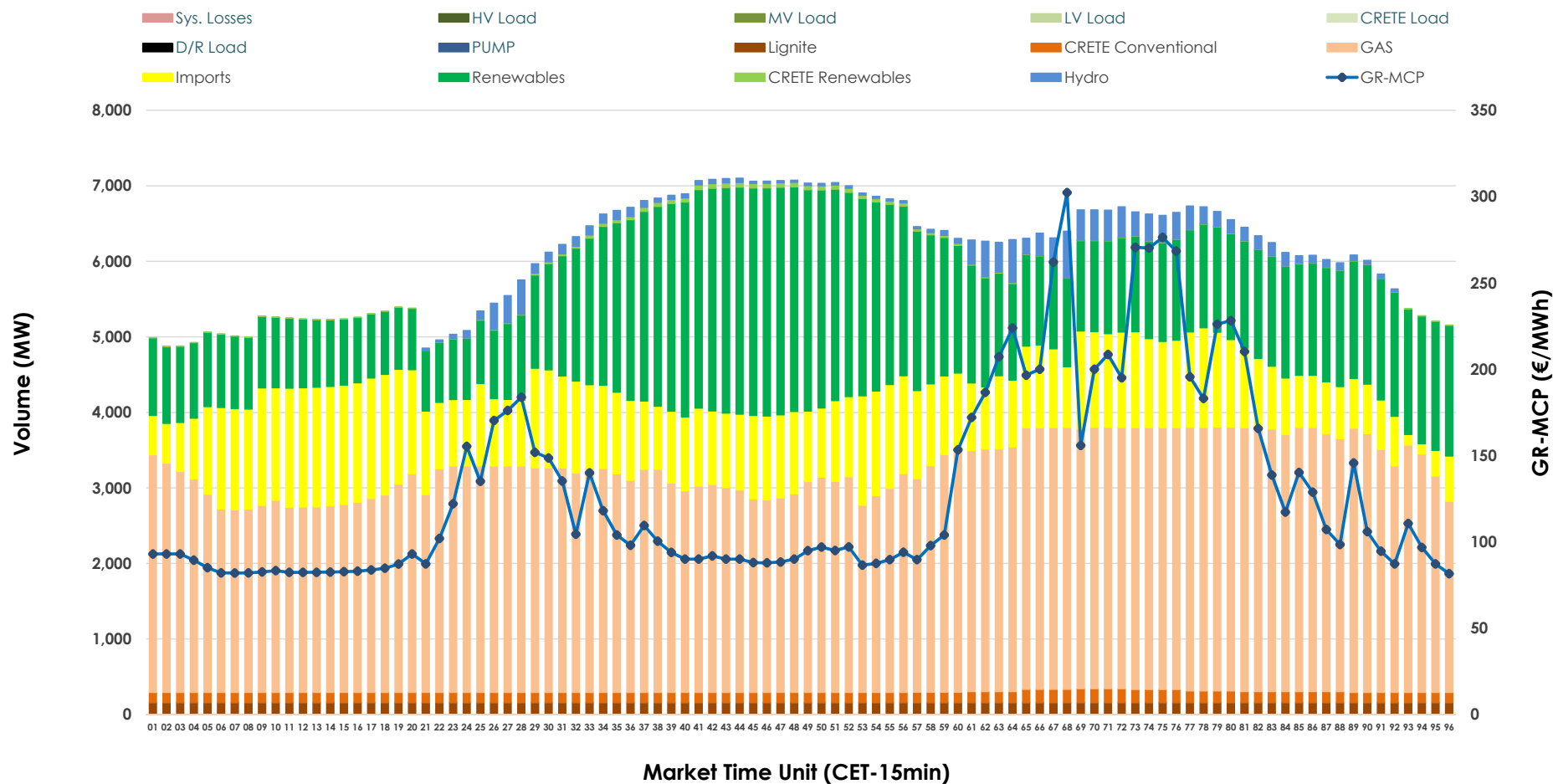


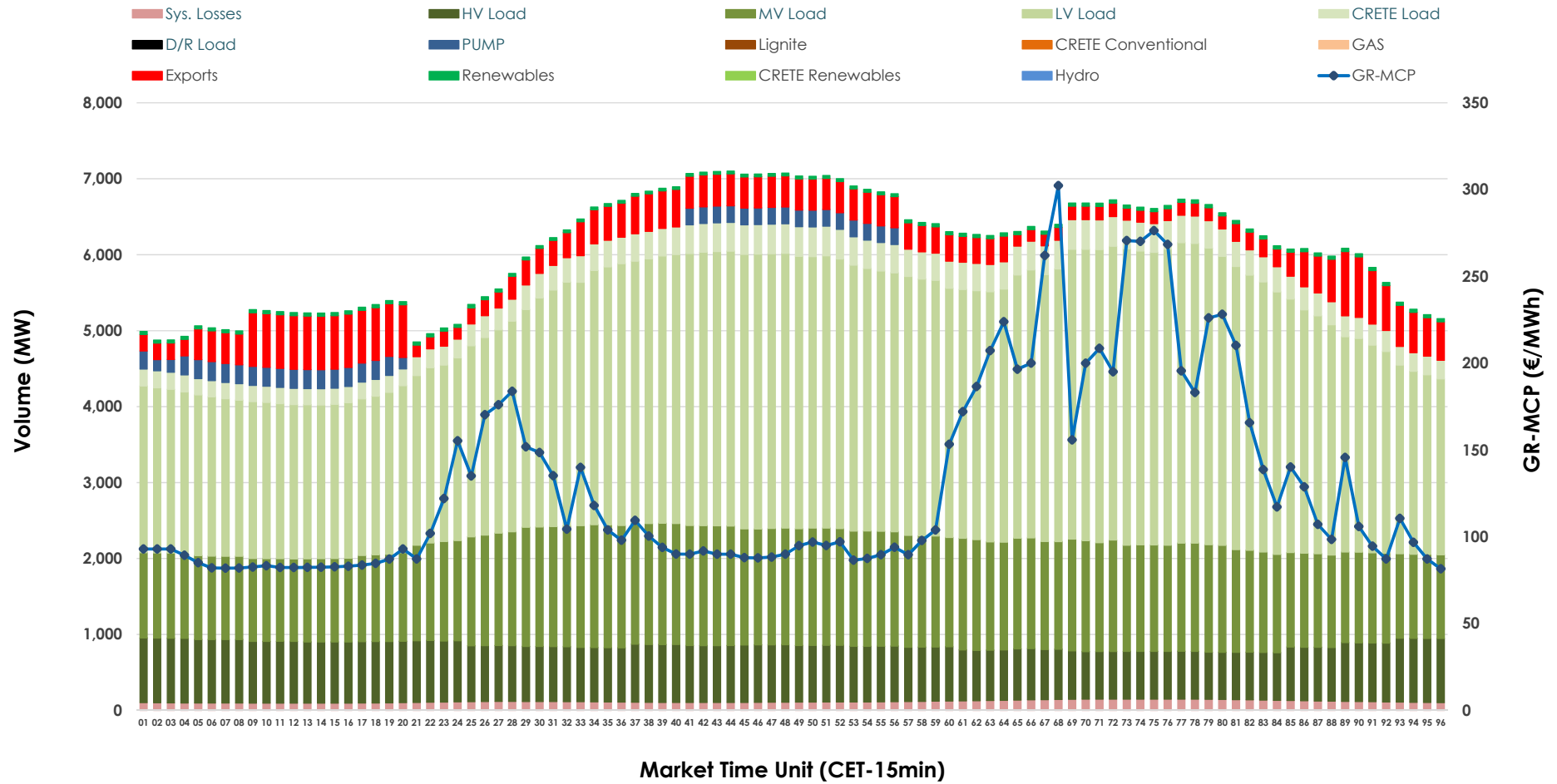


Day-Ahead Market Outlook

04.11.2025 Day-Ahead Market - Sell



04.11.2025 Day-Ahead Market - Buy



GR Bidding Zone Weekly Figures

Delivery Day	29.10	30.10	31.10	01.11	02.11	03.11	04.11
	↗ 4%	↗ 7%	↗ 25%	↘ -38%	↘ -2%	↗ 37%	↗ 13%
Avg.MCP (€/MWh)	103.05	109.88	137.55	85.75	84.26	115.28	130.03
Max.MCP (€/MWh)	286.80	241.61	305.72	198.97	154.89	254.04	302.31
Min.MCP (€/MWh)	0.00	0.01	69.80	14.40	5.12	0.00	81.53
	➡ 0%	➡ 0%	↘ -3%	↘ -4%	↘ -4%	↗ 9%	↗ 7%
Tot.Vol(GWh)	280.47	281.56	272.62	261.01	251.18	274.02	292.91

Trades by Order Type

Delivery Day		29.10	30.10	31.10	01.11	02.11	03.11	04.11	
Ord Price Type		Sell & Buy Trades in (GWh) per Price Type							(%)
PPT	(S)	34.546	31.064	28.249	30.171	30.575	31.177	32.141	21.95%
HBD	(S)	56.761	57.212	54.360	49.312	47.851	55.115	52.245	35.67%
BLK	(S)	39.603	41.085	43.564	37.250	31.905	41.176	42.149	28.78%
CPL	(S)	9.326	11.419	10.139	13.771	15.260	9.544	19.921	13.60%
PPT	(B)	15.105	14.551	14.148	13.374	13.332	14.766	13.773	9.40%
HBD	(B)	118.063	122.896	121.714	117.129	109.566	104.549	129.978	88.75%
BLK	(B)	0.000	0.000	0.000	0.000	0.000	0.000	0.000	0.00%
CPL	(B)	7.067	3.333	0.449	0.001	2.693	17.698	2.706	1.85%
		Sell & Buy Orders Traded per Price Type							(%)
PPT	(S)	1397	1454	1544	1481	1451	1337	1565	36.95%
HBD	(S)	2397	2534	2614	2565	2433	2541	2656	62.72%
BLK	(S)	16	19	13	14	14	21	14	0.33%
PPT	(B)	2322	2273	2201	2231	2256	2304	2250	35.02%
HBD	(B)	4113	4039	3871	4213	4197	4111	4175	64.98%
BLK	(B)	0	0	0	0	0	0	0	0.00%

MCP	Market Clearing Price (€/MWh)
PPT	Priority Price-Taking
HBD	Hybrid
BLK	Block
CPL	Market Coupling Flow

Trade's Volume Mix

		Sell - MWh	Buy - MWh	
Lignite	(2.6%)	3,744	0	(0.0%)
Crete Conv.	(2.4%)	3,452	0	(0.0%)
Gas	(49.0%)	71,826	0	(0.0%)
Hydro	(2.0%)	2,971	0	(0.0%)
Imports	(17.3%)	25,401		
RES	(26.4%)	38,608	942	(0.6%)
Crete RES	(0.3%)	454	0	(0.0%)
HV Load	(0.0%)	0	17,729	(12.1%)
MV Load	(0.0%)	0	32,753	(22.4%)
LV Load	(0.0%)	0	73,268	(50.0%)
Crete Load	(0.0%)	0	7,575	(5.2%)
Pumping	(0.0%)	0	2,056	(1.4%)
Exports			9,336	(6.4%)
Sys.Losses	(0.0%)	0	2,799	(1.9%)
D/R Load	(0.0%)	0	0	(0.0%)

