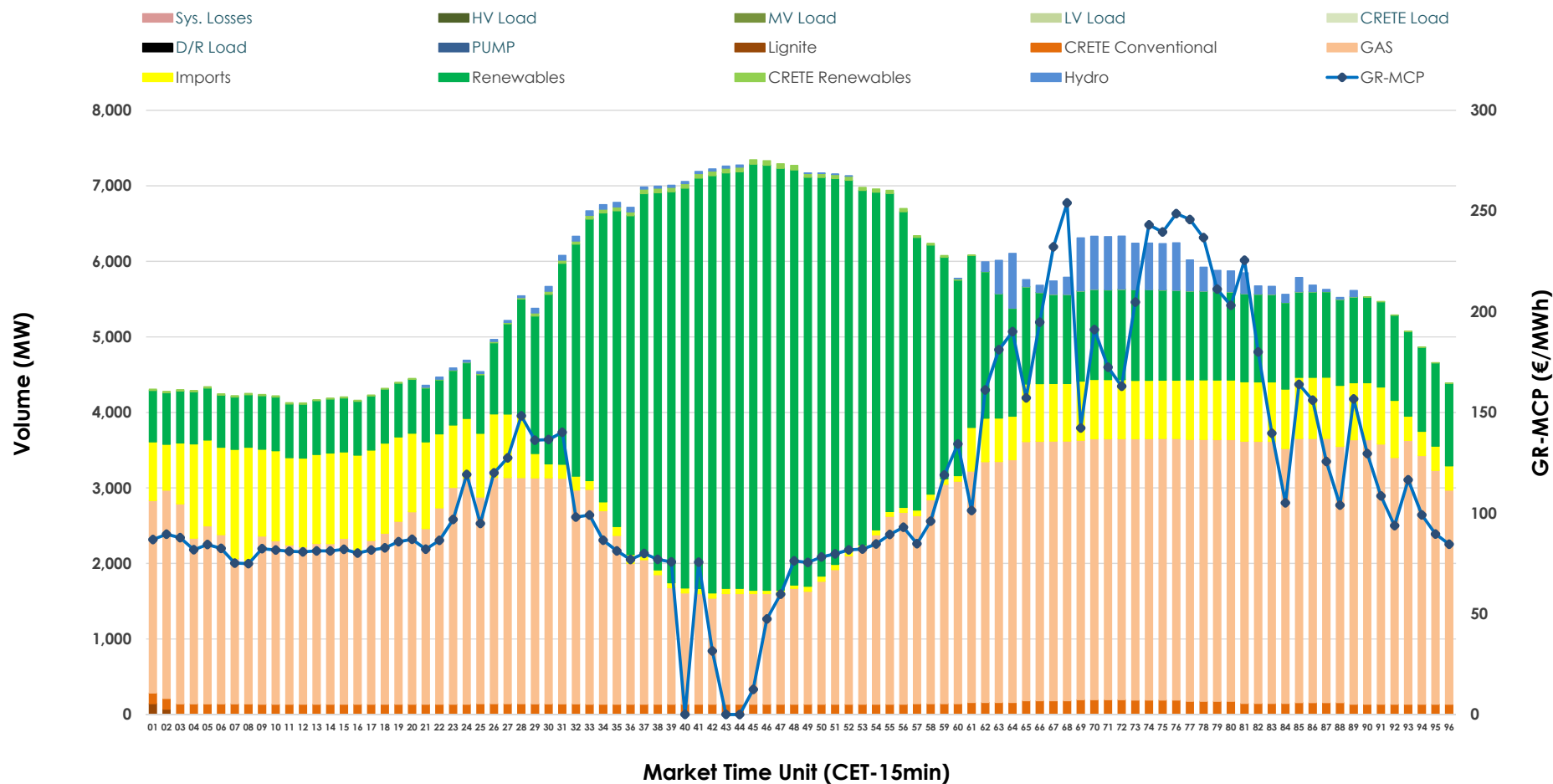


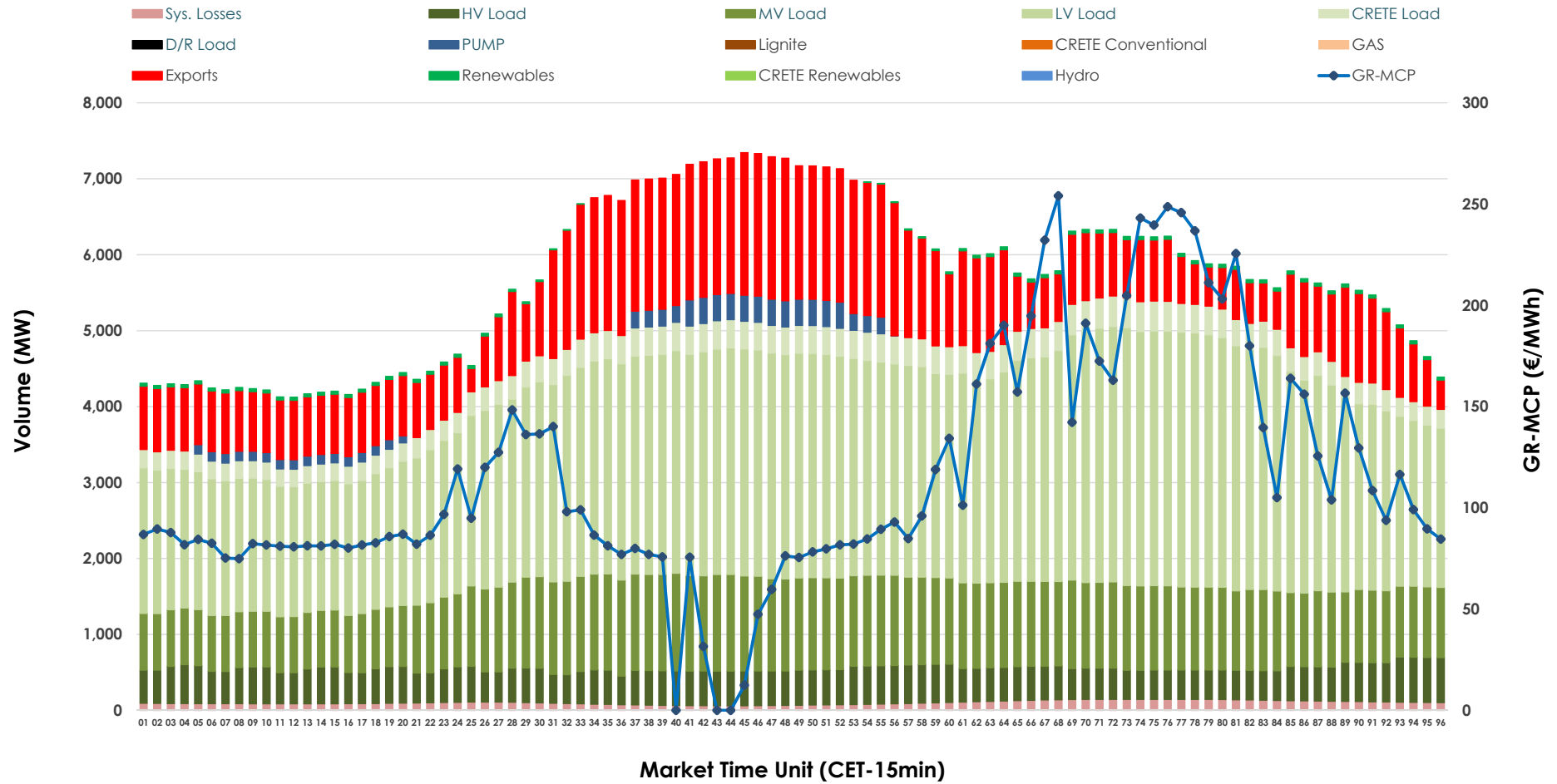


Day-Ahead Market Outlook

03.11.2025 Day-Ahead Market - Sell



03.11.2025 Day-Ahead Market - Buy



GR Bidding Zone Weekly Figures

Delivery Day	28.10	29.10	30.10	31.10	01.11	02.11	03.11
	↗ 3%	↗ 4%	↗ 7%	↗ 25%	↓ -38%	↘ -2%	↗ 37%
Avg.MCP (€/MWh)	98.94	103.05	109.88	137.55	85.75	84.26	115.28
Max.MCP (€/MWh)	238.95	286.80	241.61	305.72	198.97	154.89	254.04
Min.MCP (€/MWh)	0.01	0.00	0.01	69.80	14.40	5.12	0.00
	↘ -7%	↗ 0%	↗ 0%	↘ -3%	↘ -4%	↘ -4%	↗ 9%
Tot.Vol(GWh)	281.57	280.47	281.56	272.62	261.01	251.18	274.02

Trades by Order Type

Delivery Day		28.10	29.10	30.10	31.10	01.11	02.11	03.11	
Ord Price Type		Sell & Buy Trades in (GWh) per Price Type							(%)
PPT	(S)	42.273	34.546	31.064	28.249	30.171	30.575	31.177	22.75%
HBD	(S)	62.732	56.761	57.212	54.360	49.312	47.851	55.115	40.23%
BLK	(S)	35.776	39.603	41.085	43.564	37.250	31.905	41.176	30.05%
CPL	(S)	0.007	9.326	11.419	10.139	13.771	15.260	9.544	6.97%
PPT	(B)	14.833	15.105	14.551	14.148	13.374	13.332	14.766	10.78%
HBD	(B)	111.084	118.063	122.896	121.714	117.129	109.566	104.549	76.31%
BLK	(B)	0.000	0.000	0.000	0.000	0.000	0.000	0.000	0.00%
CPL	(B)	14.871	7.067	3.333	0.449	0.001	2.693	17.698	12.92%
		Sell & Buy Orders Traded per Price Type							(%)
PPT	(S)	1450	1397	1454	1544	1481	1451	1337	34.29%
HBD	(S)	2463	2397	2534	2614	2565	2433	2541	65.17%
BLK	(S)	14	16	19	13	14	14	21	0.54%
PPT	(B)	2299	2322	2273	2201	2231	2256	2304	35.92%
HBD	(B)	4227	4113	4039	3871	4213	4197	4111	64.08%
BLK	(B)	0	0	0	0	0	0	0	0.00%

MCP	Market Clearing Price (€/MWh)
PPT	Priority Price-Taking
HBD	Hybrid
BLK	Block
CPL	Market Coupling Flow

Trade's Volume Mix

		Sell - MWh	Buy - MWh	
Lignite	(0.0%)	54	0	(0.0%)
Crete Conv.	(2.6%)	3,556	0	(0.0%)
Gas	(46.8%)	64,125	0	(0.0%)
Hydro	(1.9%)	2,586	0	(0.0%)
Imports	(10.6%)	14,543		
RES	(37.7%)	51,638	685	(0.5%)
Crete RES	(0.4%)	510	0	(0.0%)
HV Load	(0.0%)	0	10,858	(7.9%)
MV Load	(0.0%)	0	25,085	(18.3%)
LV Load	(0.0%)	0	62,293	(45.5%)
Crete Load	(0.0%)	0	7,800	(5.7%)
Pumping	(0.0%)	0	1,912	(1.4%)
Exports			25,939	(18.9%)
Sys.Losses	(0.0%)	0	2,441	(1.8%)
D/R Load	(0.0%)	0	0	(0.0%)

