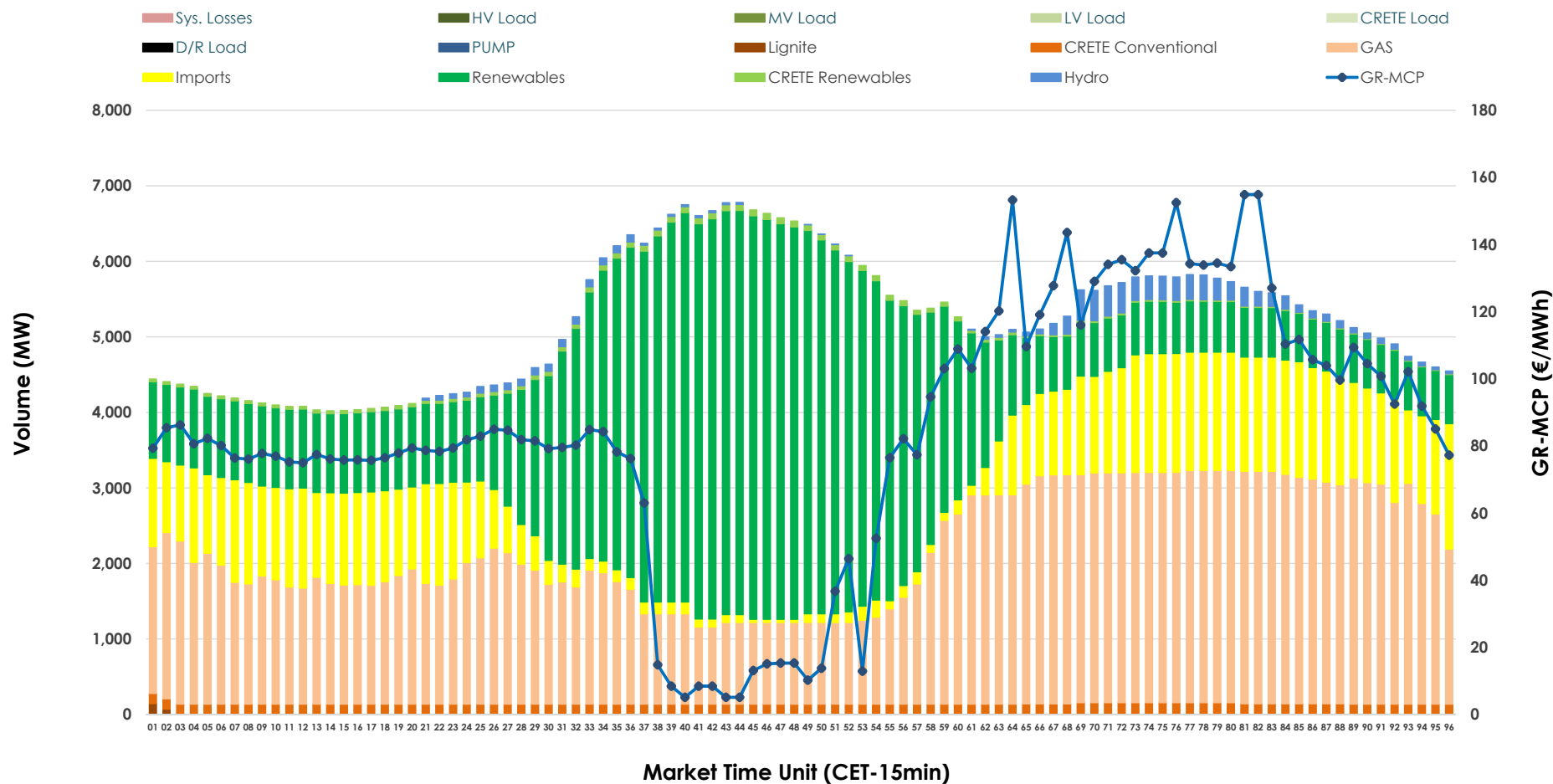


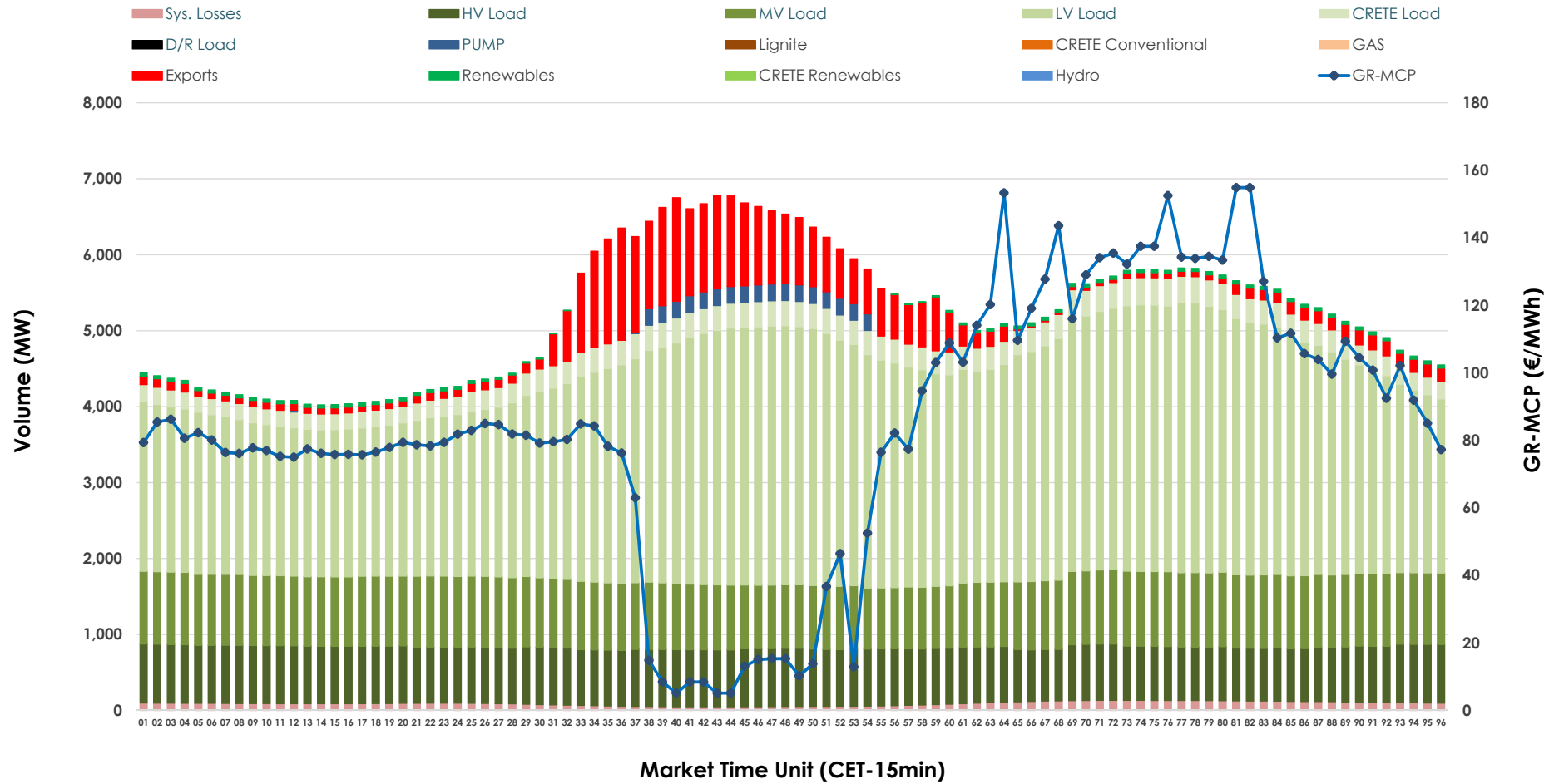


Day-Ahead Market Outlook

02.11.2025 Day-Ahead Market - Sell



02.11.2025 Day-Ahead Market - Buy



GR Bidding Zone Weekly Figures

Delivery Day	27.10	28.10	29.10	30.10	31.10	01.11	02.11
	↑ 46%	↗ 3%	↗ 4%	↗ 7%	↗ 25%	↓ -38%	↘ -2%
Avg.MCP (€/MWh)	96.43	98.94	103.05	109.88	137.55	85.75	84.26
Max.MCP (€/MWh)	270.84	238.95	286.80	241.61	305.72	198.97	154.89
Min.MCP (€/MWh)	3.00	0.01	0.00	0.01	69.80	14.40	5.12
	↗ 6%	↘ -7%	↗ 0%	↗ 0%	↘ -3%	↘ -4%	↘ -4%
Tot.Vol(GWh)	304.35	281.57	280.47	281.56	272.62	261.01	251.18

Trades by Order Type

Delivery Day		27.10	28.10	29.10	30.10	31.10	01.11	02.11	
Ord Price Type		Sell & Buy Trades in (GWh) per Price Type							(%)
PPT	(S)	53.111	42.273	34.546	31.064	28.249	30.171	30.575	24.34%
HBD	(S)	63.605	62.732	56.761	57.212	54.360	49.312	47.851	38.10%
BLK	(S)	33.878	35.776	39.603	41.085	43.564	37.250	31.905	25.40%
CPL	(S)	1.579	0.007	9.326	11.419	10.139	13.771	15.260	12.15%
PPT	(B)	16.792	14.833	15.105	14.551	14.148	13.374	13.332	10.62%
HBD	(B)	122.552	111.084	118.063	122.896	121.714	117.129	109.566	87.24%
BLK	(B)	0.000	0.000	0.000	0.000	0.000	0.000	0.000	0.00%
CPL	(B)	12.829	14.871	7.067	3.333	0.449	0.001	2.693	2.14%
		Sell & Buy Orders Traded per Price Type							(%)
PPT	(S)	1437	1450	1397	1454	1544	1481	1451	37.22%
HBD	(S)	2444	2463	2397	2534	2614	2565	2433	62.42%
BLK	(S)	16	14	16	19	13	14	14	0.36%
PPT	(B)	2338	2299	2322	2273	2201	2231	2256	34.96%
HBD	(B)	4204	4227	4113	4039	3871	4213	4197	65.04%
BLK	(B)	0	0	0	0	0	0	0	0.00%

MCP	Market Clearing Price (€/MWh)
PPT	Priority Price-Taking
HBD	Hybrid
BLK	Block
CPL	Market Coupling Flow

Trade's Volume Mix

		Sell - MWh	Buy - MWh	
Lignite	(0.0%)	54	0	(0.0%)
Crete Conv.	(2.7%)	3,340	0	(0.0%)
Gas	(39.7%)	49,827	0	(0.0%)
Hydro	(1.6%)	1,961	0	(0.0%)
Imports	(16.5%)	20,766		
RES	(38.7%)	48,610	665	(0.5%)
Crete RES	(0.8%)	1,033	0	(0.0%)
HV Load	(0.0%)	0	17,759	(14.1%)
MV Load	(0.0%)	0	21,882	(17.4%)
LV Load	(0.0%)	0	66,530	(53.0%)
Crete Load	(0.0%)	0	6,902	(5.5%)
Pumping	(0.0%)	0	947	(0.8%)
Exports			8,735	(7.0%)
Sys.Losses	(0.0%)	0	2,172	(1.7%)
D/R Load	(0.0%)	0	0	(0.0%)

