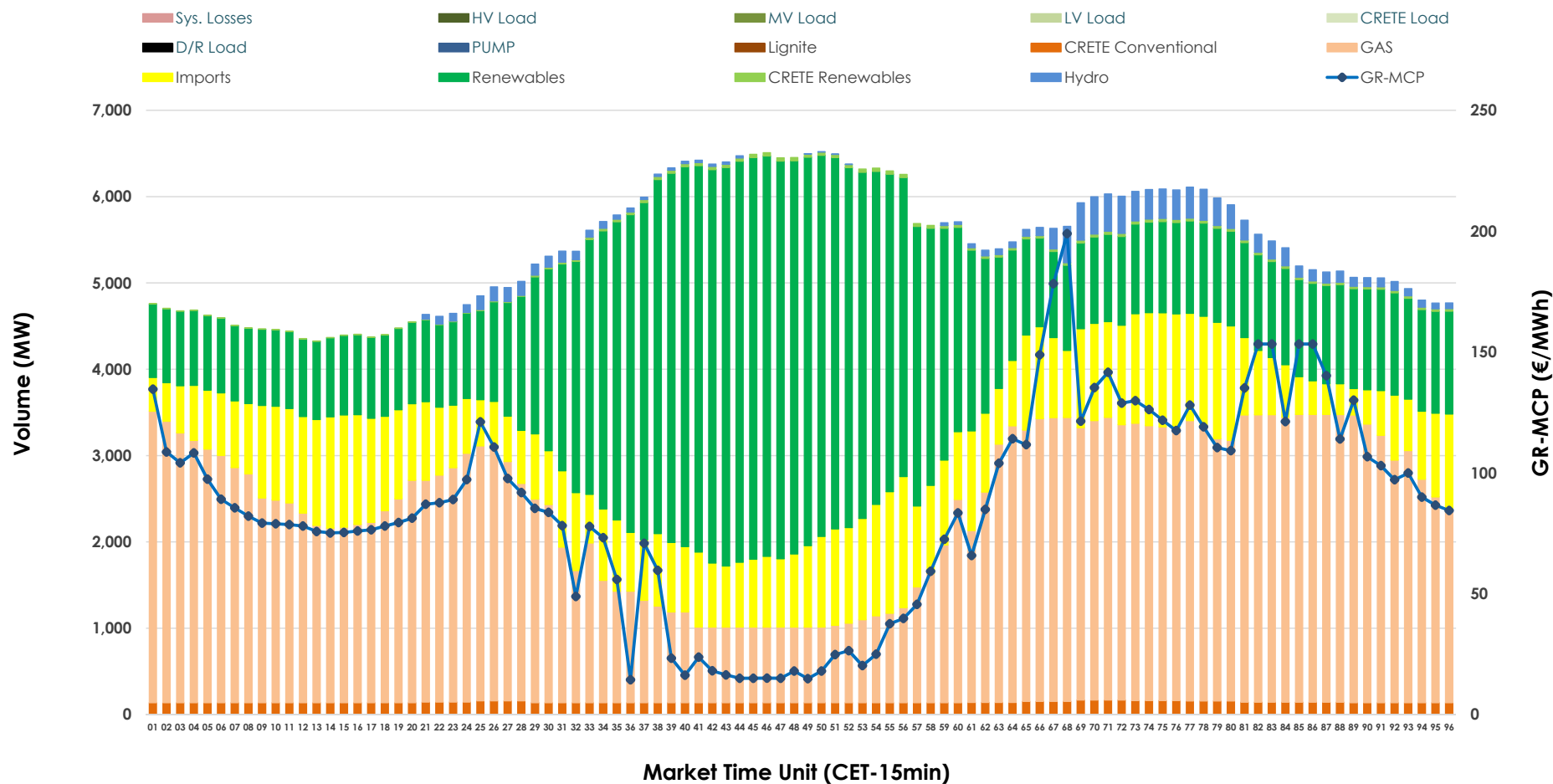


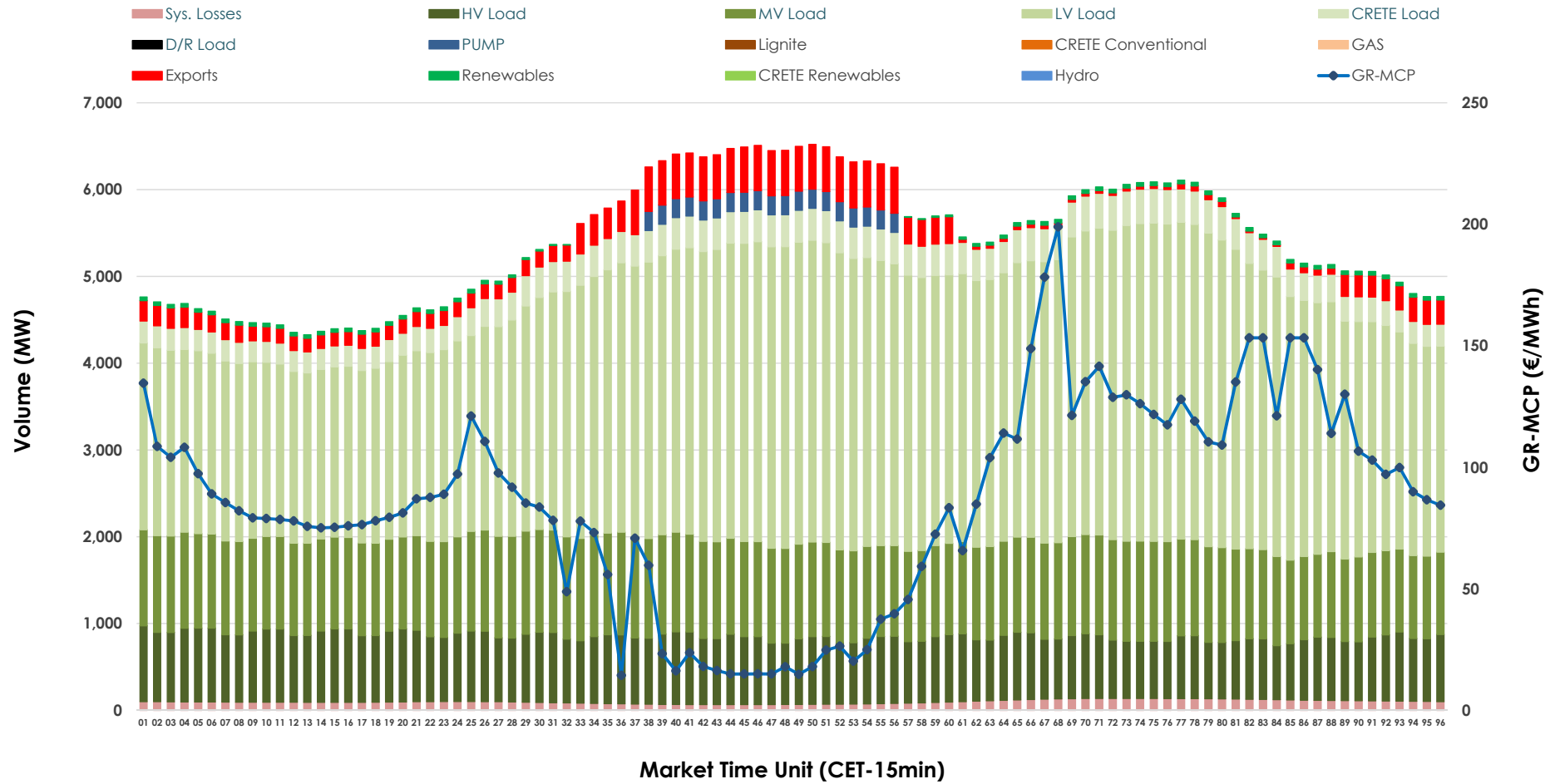


## Day-Ahead Market Outlook

01.11.2025 Day-Ahead Market - Sell



## 01.11.2025 Day-Ahead Market - Buy



### GR Bidding Zone Weekly Figures

Delivery Day	26.10	27.10	28.10	29.10	30.10	31.10	01.11
	⬇️ -30%	⬆️ 46%	⬆️ 3%	⬆️ 4%	⬆️ 7%	⬆️ 25%	⬇️ -38%
Avg.MCP (€/MWh)	66.24	96.43	98.94	103.05	109.88	137.55	85.75
Max.MCP (€/MWh)	167.95	270.84	238.95	286.80	241.61	305.72	198.97
Min.MCP (€/MWh)	0.00	3.00	0.01	0.00	0.01	69.80	14.40
	➡️ 1%	⬆️ 6%	⬇️ -7%	➡️ 0%	➡️ 0%	⬇️ -3%	⬇️ -4%
Tot.Vol(GWh)	288.43	304.35	281.57	280.47	281.56	272.62	261.01

### Trades by Order Type

Delivery Day		26.10	27.10	28.10	29.10	30.10	31.10	01.11	
Ord Price Type		Sell & Buy Trades in (GWh) per Price Type							(%)
PPT	(S)	50.015	53.111	42.273	34.546	31.064	28.249	30.171	23.12%
HBD	(S)	59.625	63.605	62.732	56.761	57.212	54.360	49.312	37.79%
BLK	(S)	28.480	33.878	35.776	39.603	41.085	43.564	37.250	28.54%
CPL	(S)	6.093	1.579	0.007	9.326	11.419	10.139	13.771	10.55%
PPT	(B)	16.596	16.792	14.833	15.105	14.551	14.148	13.374	10.25%
HBD	(B)	114.990	122.552	111.084	118.063	122.896	121.714	117.129	89.75%
BLK	(B)	0.000	0.000	0.000	0.000	0.000	0.000	0.000	0.00%
CPL	(B)	12.627	12.829	14.871	7.067	3.333	0.449	0.001	0.00%
		Sell & Buy Orders Traded per Price Type							(%)
PPT	(S)	1478	1437	1450	1397	1454	1544	1481	36.48%
HBD	(S)	2308	2444	2463	2397	2534	2614	2565	63.18%
BLK	(S)	9	16	14	16	19	13	14	0.34%
PPT	(B)	2407	2338	2299	2322	2273	2201	2231	34.62%
HBD	(B)	4462	4204	4227	4113	4039	3871	4213	65.38%
BLK	(B)	0	0	0	0	0	0	0	0.00%

<b>MCP</b>	Market Clearing Price (€/MWh)
<b>PPT</b>	Priority Price-Taking
<b>HBD</b>	Hybrid
<b>BLK</b>	Block
<b>CPL</b>	Market Coupling Flow

### Trade's Volume Mix

		Sell - MWh	Buy - MWh	
Lignite	(0.0%)	0	0	(0.0%)
Crete Conv.	(2.6%)	3,404	0	(0.0%)
Gas	(42.8%)	55,906	0	(0.0%)
Hydro	(1.8%)	2,380	0	(0.0%)
Imports	(16.3%)	21,236		
RES	(36.0%)	46,991	668	(0.5%)
Crete RES	(0.5%)	588	0	(0.0%)
HV Load	(0.0%)	0	18,142	(13.9%)
MV Load	(0.0%)	0	26,060	(20.0%)
LV Load	(0.0%)	0	68,826	(52.7%)
Crete Load	(0.0%)	0	7,866	(6.0%)
Pumping	(0.0%)	0	1,045	(0.8%)
Exports			5,505	(4.2%)
Sys.Losses	(0.0%)	0	2,392	(1.8%)
D/R Load	(0.0%)	0	0	(0.0%)

