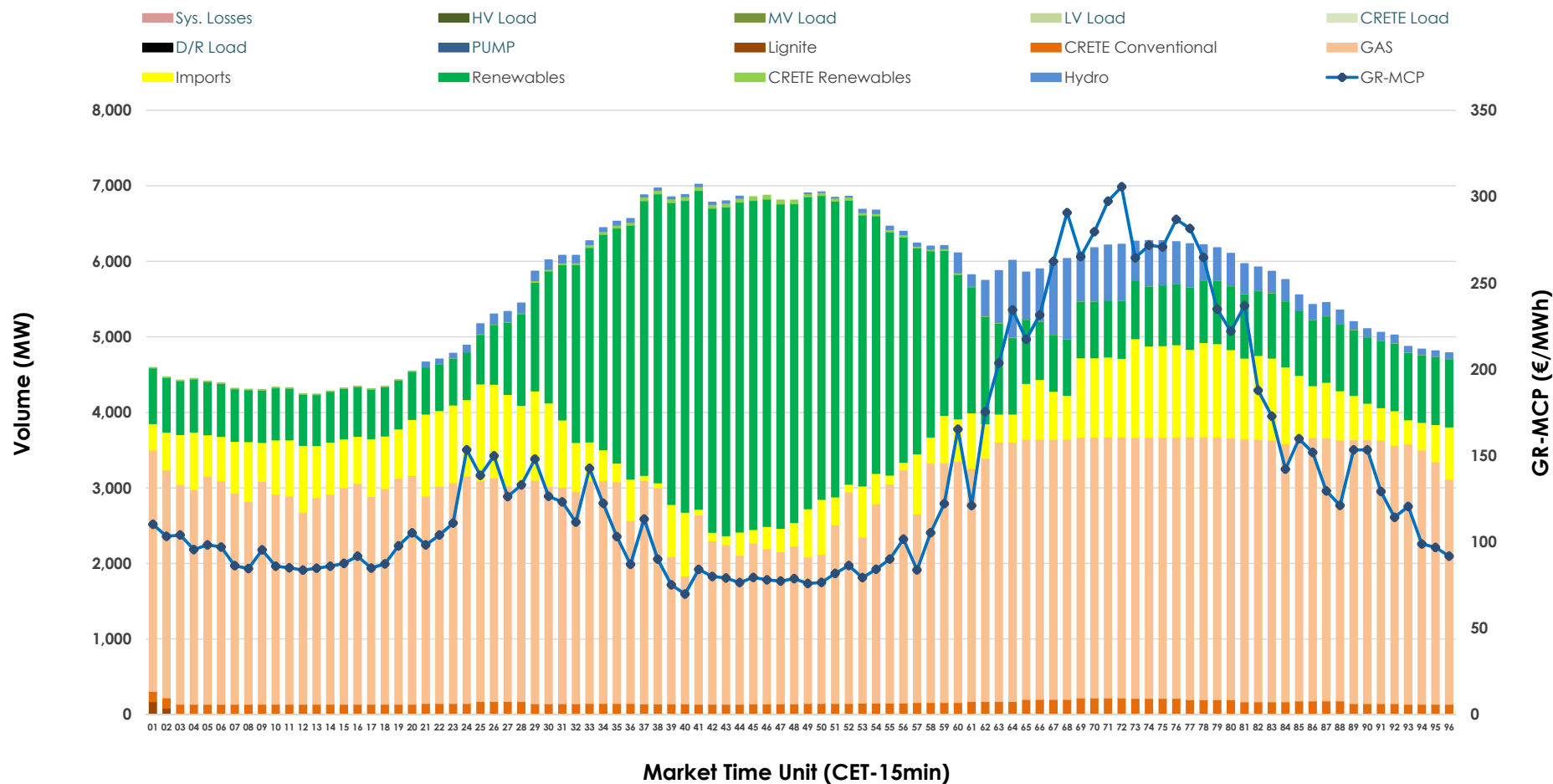


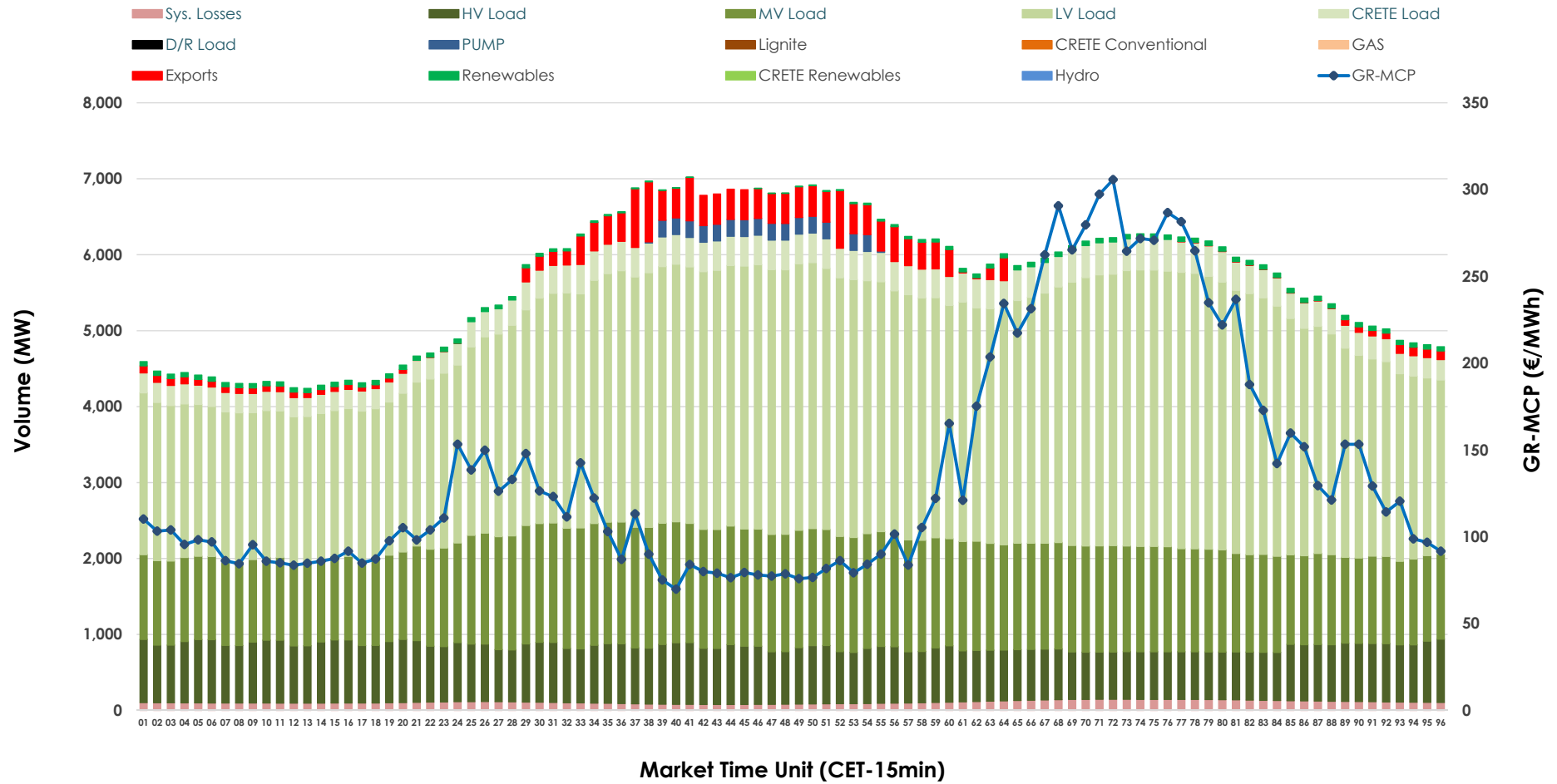


## Day-Ahead Market Outlook

31.10.2025 Day-Ahead Market - Sell



## 31.10.2025 Day-Ahead Market - Buy



### GR Bidding Zone Weekly Figures

Delivery Day	25.10	26.10	27.10	28.10	29.10	30.10	31.10
	↑ 40%	↓ -30%	↑ 46%	↗ 3%	↗ 4%	↗ 7%	↗ 25%
Avg.MCP (€/MWh)	94.13	66.24	96.43	98.94	103.05	109.88	137.55
Max.MCP (€/MWh)	233.98	167.95	270.84	238.95	286.80	241.61	305.72
Min.MCP (€/MWh)	0.01	0.00	3.00	0.01	0.00	0.01	69.80
	↓ -5%	↗ 1%	↗ 6%	↓ -7%	↗ 0%	↗ 0%	↓ -3%
Tot.Vol(GWh)	286.58	288.43	304.35	281.57	280.47	281.56	272.62

### Trades by Order Type

Delivery Day		25.10	26.10	27.10	28.10	29.10	30.10	31.10	
Ord Price Type		Sell & Buy Trades in (GWh) per Price Type							(%)
PPT	(S)	41.294	50.015	53.111	42.273	34.546	31.064	28.249	20.72%
HBD	(S)	62.850	59.625	63.605	62.732	56.761	57.212	54.360	39.88%
BLK	(S)	35.703	28.480	33.878	35.776	39.603	41.085	43.564	31.96%
CPL	(S)	3.444	6.093	1.579	0.007	9.326	11.419	10.139	7.44%
PPT	(B)	17.456	16.596	16.792	14.833	15.105	14.551	14.148	10.38%
HBD	(B)	118.887	114.990	122.552	111.084	118.063	122.896	121.714	89.29%
BLK	(B)	0.000	0.000	0.000	0.000	0.000	0.000	0.000	0.00%
CPL	(B)	6.949	12.627	12.829	14.871	7.067	3.333	0.449	0.33%
		Sell & Buy Orders Traded per Price Type							(%)
PPT	(S)	1450	1478	1437	1450	1397	1454	1544	37.02%
HBD	(S)	2476	2308	2444	2463	2397	2534	2614	62.67%
BLK	(S)	13	9	16	14	16	19	13	0.31%
PPT	(B)	2414	2407	2338	2299	2322	2273	2201	36.25%
HBD	(B)	4229	4462	4204	4227	4113	4039	3871	63.75%
BLK	(B)	0	0	0	0	0	0	0	0.00%

<b>MCP</b>	Market Clearing Price (€/MWh)
<b>PPT</b>	Priority Price-Taking
<b>HBD</b>	Hybrid
<b>BLK</b>	Block
<b>CPL</b>	Market Coupling Flow

### Trade's Volume Mix

		Sell - MWh	Buy - MWh	
Lignite	(0.0%)	64	0	(0.0%)
Crete Conv.	(2.8%)	3,808	0	(0.0%)
Gas	(52.3%)	71,255	0	(0.0%)
Hydro	(3.2%)	4,355	0	(0.0%)
Imports	(12.1%)	16,548		
RES	(29.3%)	39,889	1,026	(0.8%)
Crete RES	(0.3%)	392	0	(0.0%)
HV Load	(0.0%)	0	17,576	(12.9%)
MV Load	(0.0%)	0	32,329	(23.7%)
LV Load	(0.0%)	0	69,730	(51.2%)
Crete Load	(0.0%)	0	8,289	(6.1%)
Pumping	(0.0%)	0	834	(0.6%)
Exports			3,920	(2.9%)
Sys.Losses	(0.0%)	0	2,609	(1.9%)
D/R Load	(0.0%)	0	0	(0.0%)

