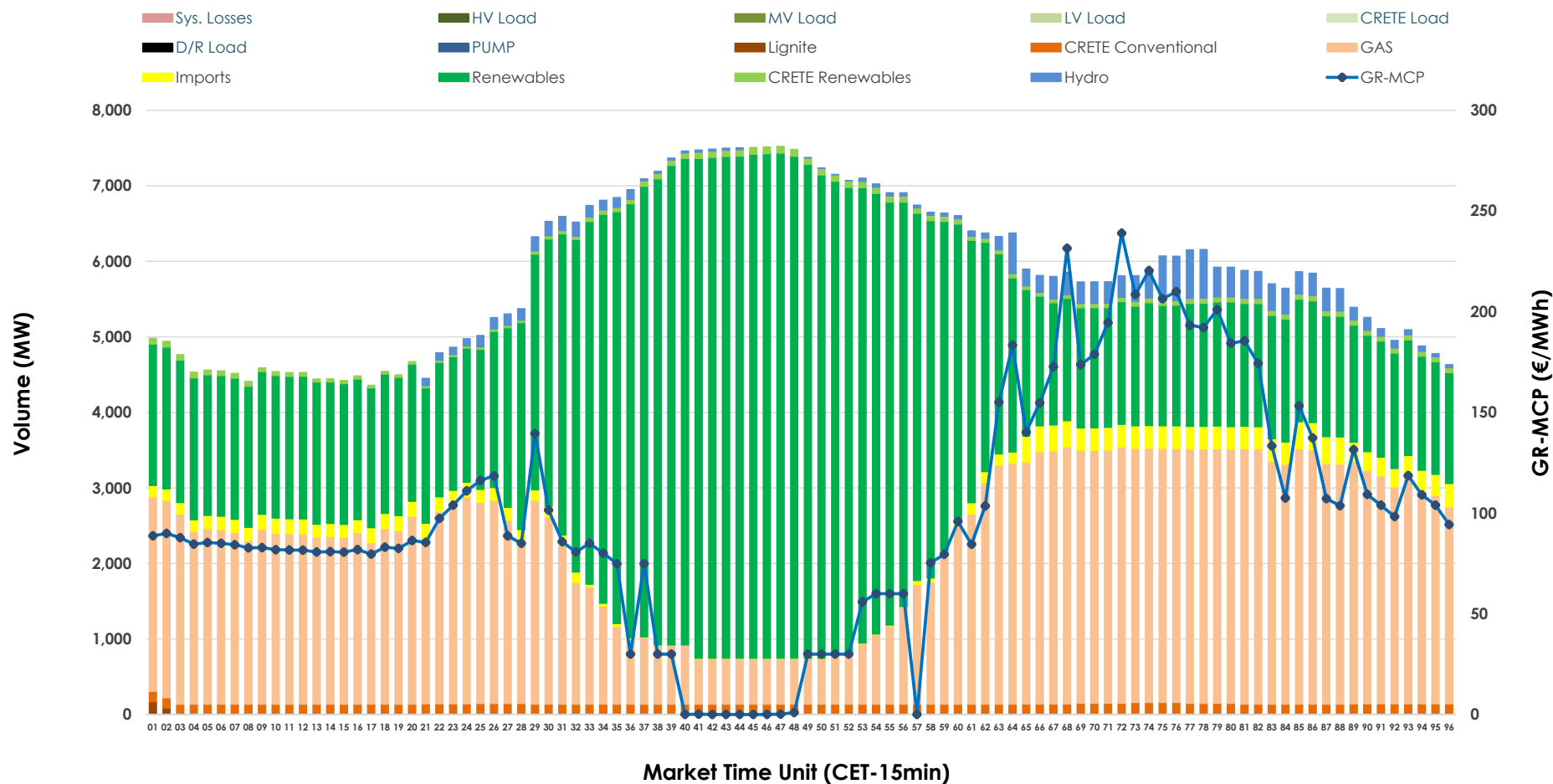


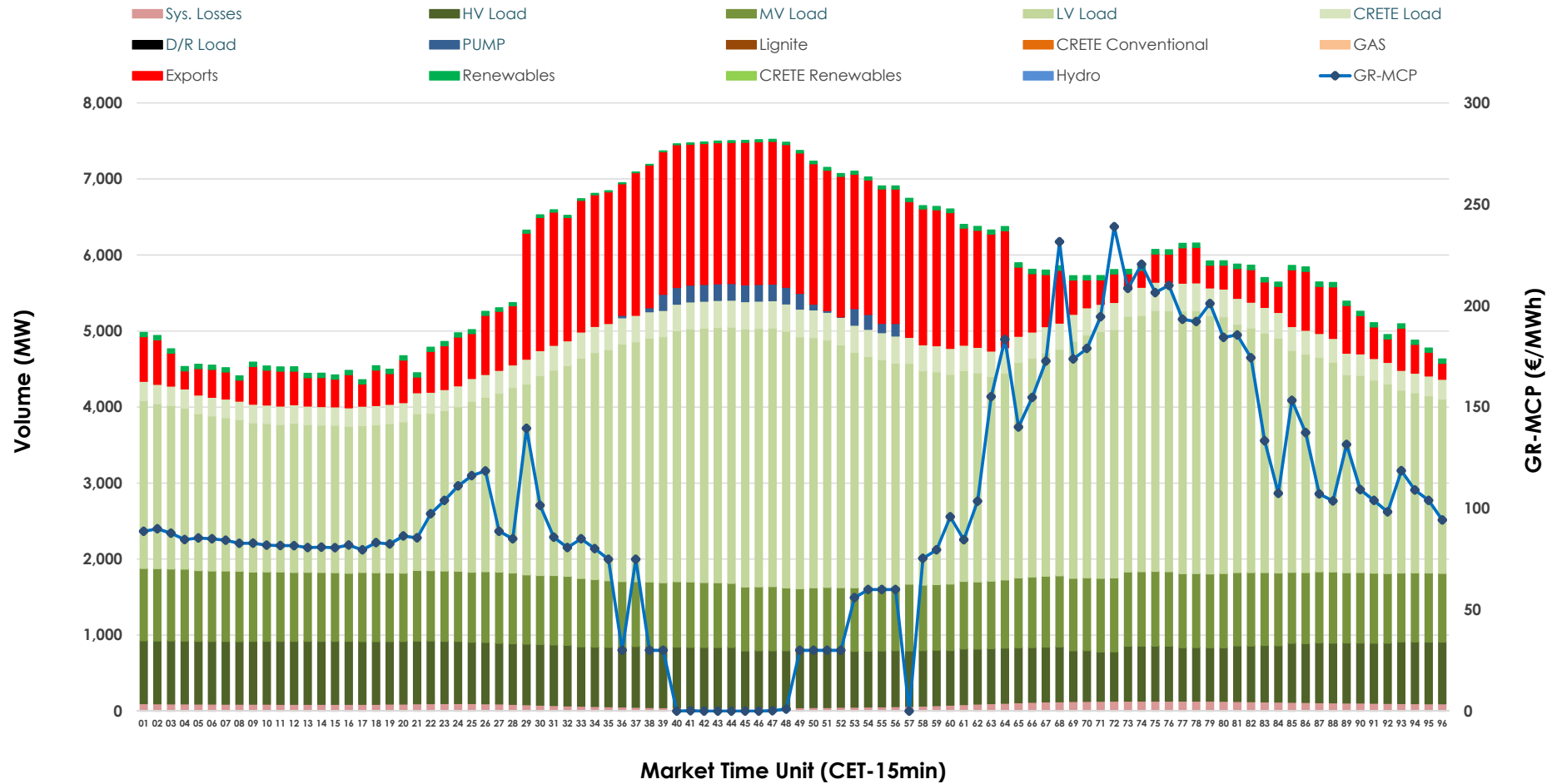


Day-Ahead Market Outlook

28.10.2025 Day-Ahead Market - Sell



28.10.2025 Day-Ahead Market - Buy



GR Bidding Zone Weekly Figures

Delivery Day	22.10	23.10	24.10	25.10	26.10	27.10	28.10
	👇 -9%	👇 -21%	👇 -38%	👈 40%	👇 -30%	👈 46%	👈 3%
Avg.MCP (€/MWh)	137.64	109.31	67.27	94.13	66.24	96.43	98.94
Max.MCP (€/MWh)	329.06	201.34	159.98	233.98	167.95	270.84	238.95
Min.MCP (€/MWh)	83.55	33.08	-0.10	0.01	0.00	3.00	0.01
	👈 1%	👈 0%	👈 3%	👇 -5%	👈 1%	👈 6%	👇 -7%
Tot.Vol(GWh)	291.85	291.51	301.08	286.58	288.43	304.35	281.57

Trades by Order Type

Delivery Day		22.10	23.10	24.10	25.10	26.10	27.10	28.10	
Ord Price Type		Sell & Buy Trades in (GWh) per Price Type							(%)
PPT	(S)	32.546	39.620	56.198	41.294	50.015	53.111	42.273	30.03%
HBD	(S)	56.335	59.590	62.633	62.850	59.625	63.605	62.732	44.56%
BLK	(S)	52.857	41.345	28.659	35.703	28.480	33.878	35.776	25.41%
CPL	(S)	4.188	5.201	3.053	3.444	6.093	1.579	0.007	0.00%
PPT	(B)	16.351	17.275	18.245	17.456	16.596	16.792	14.833	10.54%
HBD	(B)	126.280	124.500	126.245	118.887	114.990	122.552	111.084	78.90%
BLK	(B)	0.000	0.000	0.000	0.000	0.000	0.000	0.000	0.00%
CPL	(B)	3.295	3.981	6.052	6.949	12.627	12.829	14.871	10.56%
		Sell & Buy Orders Traded per Price Type							(%)
PPT	(S)	1368	1379	1487	1450	1478	1437	1450	36.92%
HBD	(S)	2714	2599	2037	2476	2308	2444	2463	62.72%
BLK	(S)	18	18	9	13	9	16	14	0.36%
PPT	(B)	2345	2392	2400	2414	2407	2338	2299	35.23%
HBD	(B)	4258	4215	4408	4229	4462	4204	4227	64.77%
BLK	(B)	0	0	0	0	0	0	0	0.00%

MCP	Market Clearing Price (€/MWh)
PPT	Priority Price-Taking
HBD	Hybrid
BLK	Block
CPL	Market Coupling Flow

Trade's Volume Mix

		Sell - MWh	Buy - MWh	
Lignite	(0.0%)	64	0	(0.0%)
Crete Conv.	(2.4%)	3,342	0	(0.0%)
Gas	(38.6%)	54,332	0	(0.0%)
Hydro	(2.3%)	3,276	0	(0.0%)
Imports	(2.9%)	4,110		
RES	(52.7%)	74,176	1,117	(0.8%)
Crete RES	(1.1%)	1,488	0	(0.0%)
HV Load	(0.0%)	0	18,547	(13.2%)
MV Load	(0.0%)	0	21,791	(15.5%)
LV Load	(0.0%)	0	65,764	(46.7%)
Crete Load	(0.0%)	0	7,598	(5.4%)
Pumping	(0.0%)	0	823	(0.6%)
Exports			22,994	(16.3%)
Sys.Losses	(0.0%)	0	2,153	(1.5%)
D/R Load	(0.0%)	0	0	(0.0%)

