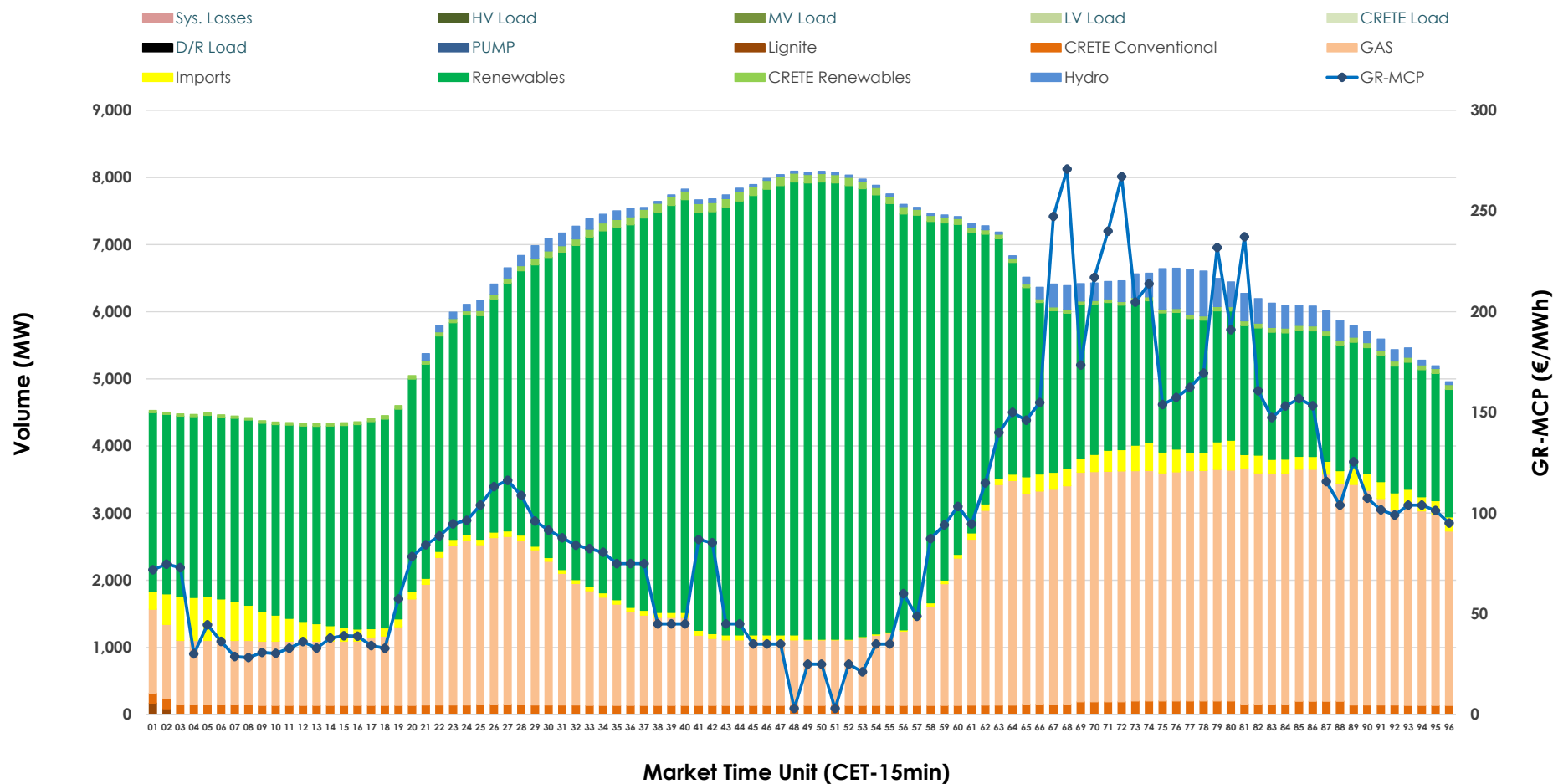


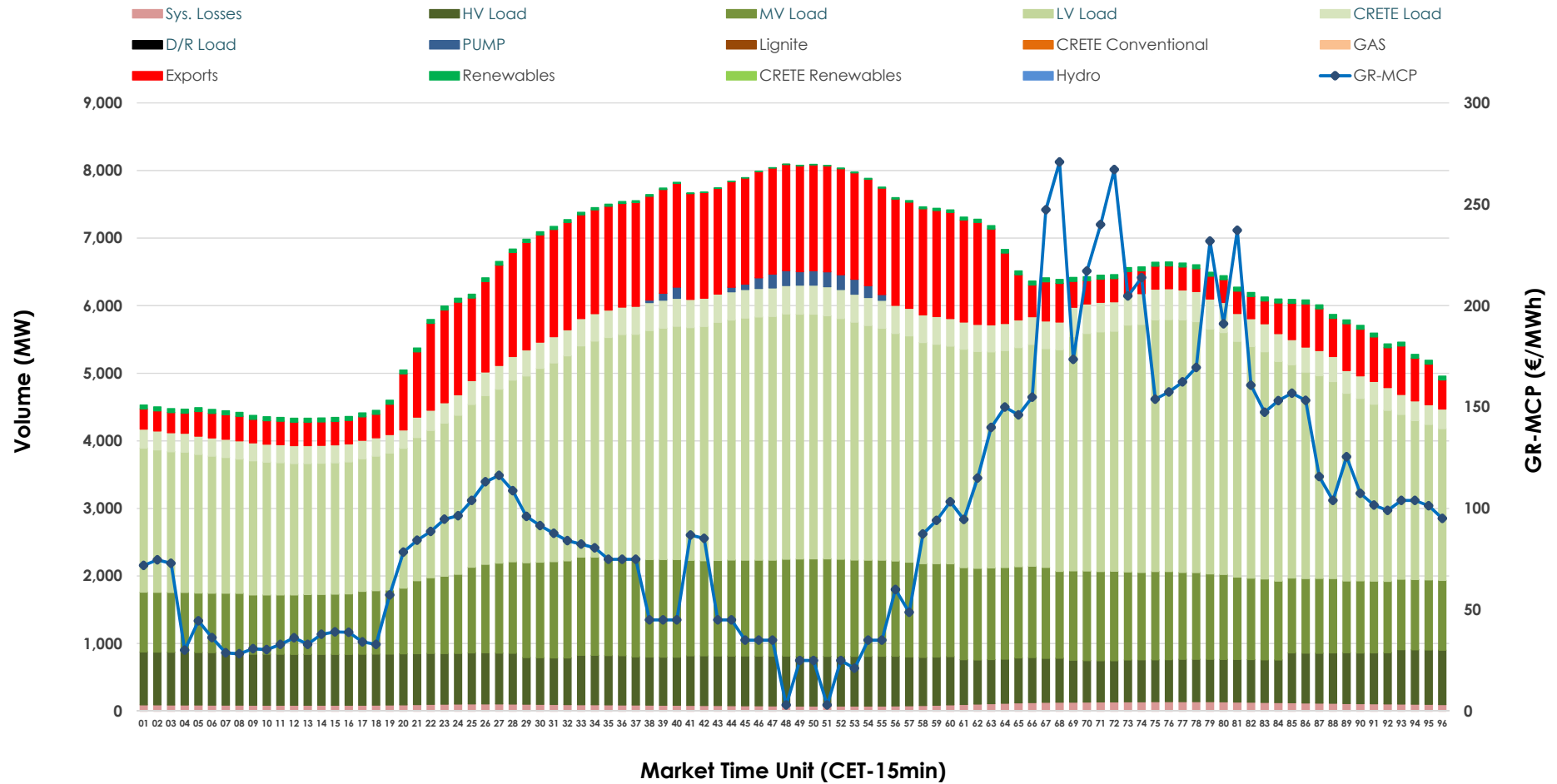


## Day-Ahead Market Outlook

27.10.2025 Day-Ahead Market - Sell



## 27.10.2025 Day-Ahead Market - Buy



### GR Bidding Zone Weekly Figures

Delivery Day	21.10	22.10	23.10	24.10	25.10	26.10	27.10
	⬇️ -4%	⬇️ -9%	⬇️ -21%	⬇️ -38%	⬆️ 40%	⬇️ -30%	⬆️ 46%
Avg.MCP (€/MWh)	151.76	137.64	109.31	67.27	94.13	66.24	96.43
Max.MCP (€/MWh)	320.88	329.06	201.34	159.98	233.98	167.95	270.84
Min.MCP (€/MWh)	85.66	83.55	33.08	-0.10	0.01	0.00	3.00
	➡️ 0%	➡️ 1%	➡️ 0%	➡️ 3%	➡️ -5%	➡️ 1%	➡️ 6%
Tot.Vol(GWh)	288.02	291.85	291.51	301.08	286.58	288.43	304.35

### Trades by Order Type

Delivery Day		21.10	22.10	23.10	24.10	25.10	26.10	27.10	
Ord Price Type		Sell & Buy Trades in (GWh) per Price Type							(%)
PPT	(S)	26.987	32.546	39.620	56.198	41.294	50.015	53.111	34.90%
HBD	(S)	50.369	56.335	59.590	62.633	62.850	59.625	63.605	41.80%
BLK	(S)	52.639	52.857	41.345	28.659	35.703	28.480	33.878	22.26%
CPL	(S)	14.016	4.188	5.201	3.053	3.444	6.093	1.579	1.04%
PPT	(B)	16.349	16.351	17.275	18.245	17.456	16.596	16.792	11.03%
HBD	(B)	127.504	126.280	124.500	126.245	118.887	114.990	122.552	80.53%
BLK	(B)	0.000	0.000	0.000	0.000	0.000	0.000	0.000	0.00%
CPL	(B)	0.159	3.295	3.981	6.052	6.949	12.627	12.829	8.43%
		Sell & Buy Orders Traded per Price Type							(%)
PPT	(S)	1438	1368	1379	1487	1450	1478	1437	36.87%
HBD	(S)	2711	2714	2599	2037	2476	2308	2444	62.71%
BLK	(S)	17	18	18	9	13	9	16	0.41%
PPT	(B)	2320	2345	2392	2400	2414	2407	2338	35.74%
HBD	(B)	4230	4258	4215	4408	4229	4462	4204	64.26%
BLK	(B)	0	0	0	0	0	0	0	0.00%

<b>MCP</b>	Market Clearing Price (€/MWh)
<b>PPT</b>	Priority Price-Taking
<b>HBD</b>	Hybrid
<b>BLK</b>	Block
<b>CPL</b>	Market Coupling Flow

### Trade's Volume Mix

		Sell - MWh	Buy - MWh	
Lignite	(0.0%)	64	0	(0.0%)
Crete Conv.	(2.4%)	3,615	0	(0.0%)
Gas	(32.7%)	49,697	0	(0.0%)
Hydro	(2.1%)	3,234	0	(0.0%)
Imports	(3.0%)	4,614		
RES	(58.5%)	89,091	1,047	(0.7%)
Crete RES	(1.2%)	1,858	0	(0.0%)
HV Load	(0.0%)	0	17,218	(11.3%)
MV Load	(0.0%)	0	29,322	(19.3%)
LV Load	(0.0%)	0	70,488	(46.3%)
Crete Load	(0.0%)	0	8,869	(5.8%)
Pumping	(0.0%)	0	592	(0.4%)
Exports			22,177	(14.6%)
Sys.Losses	(0.0%)	0	2,460	(1.6%)
D/R Load	(0.0%)	0	0	(0.0%)

