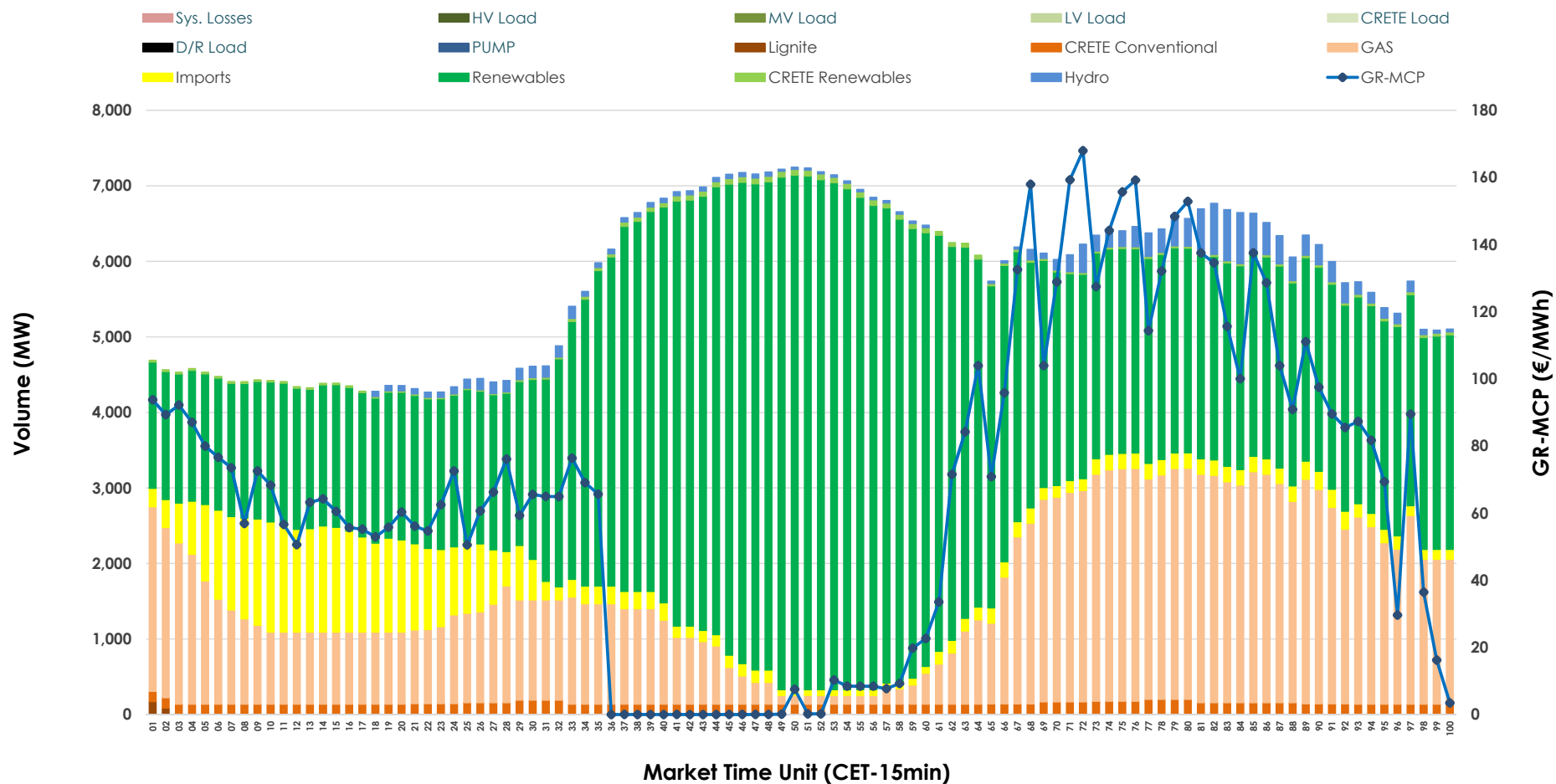


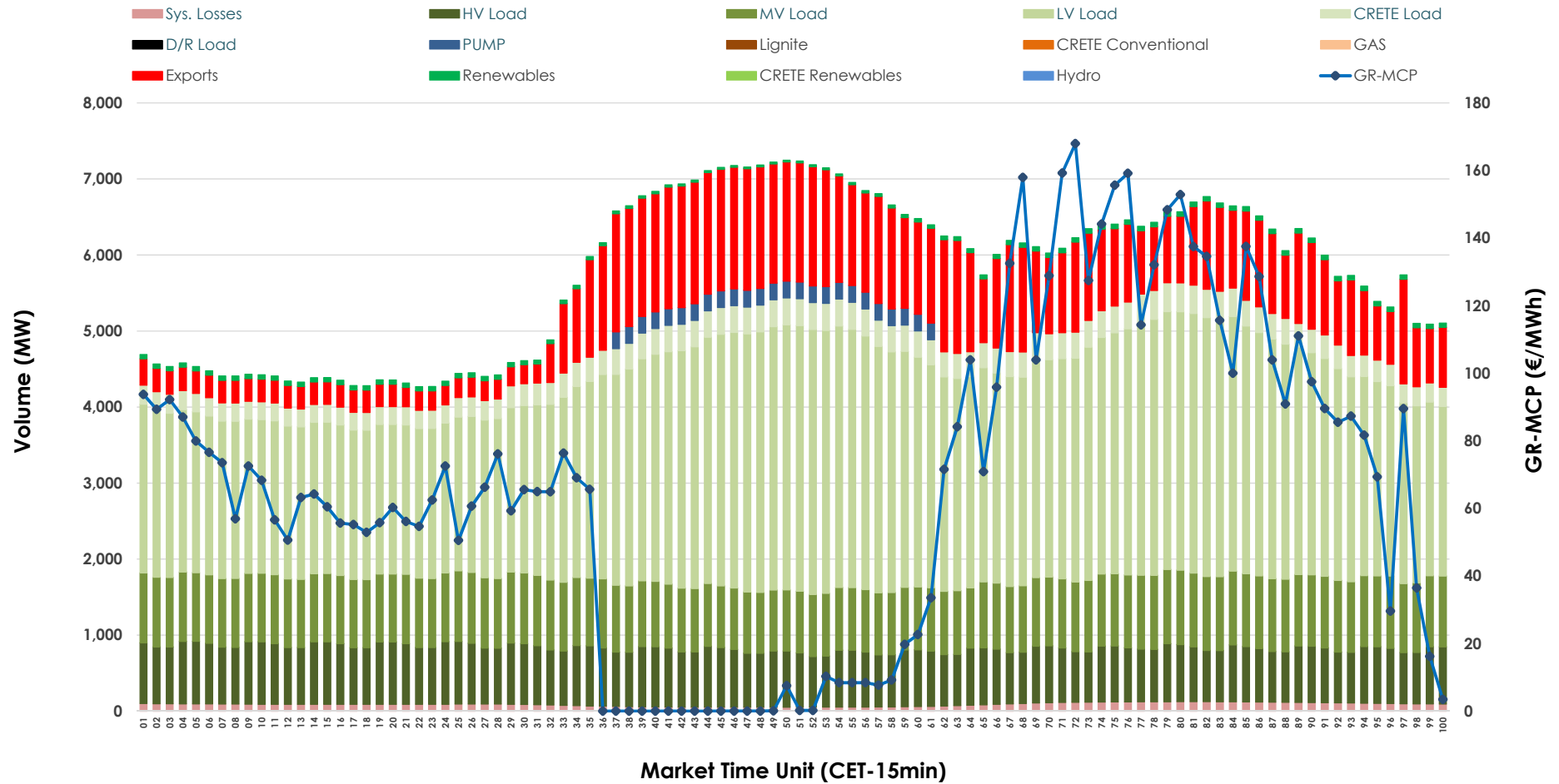


Day-Ahead Market Outlook

26.10.2025 Day-Ahead Market - Sell



26.10.2025 Day-Ahead Market - Buy



GR Bidding Zone Weekly Figures

Delivery Day	20.10	21.10	22.10	23.10	24.10	25.10	26.10
	↑ 53%	↓ -4%	↓ -9%	↓ -21%	↓ -38%	↑ 40%	↓ -30%
Avg.MCP (€/MWh)	158.33	151.76	137.64	109.31	67.27	94.13	66.24
Max.MCP (€/MWh)	398.44	320.88	329.06	201.34	159.98	233.98	167.95
Min.MCP (€/MWh)	77.26	85.66	83.55	33.08	-0.10	0.01	0.00
	↗ 11%	→ 0%	↗ 1%	→ 0%	↗ 3%	↓ -5%	→ 1%
Tot.Vol(GWh)	288.09	288.02	291.85	291.51	301.08	286.58	288.43

Trades by Order Type

Delivery Day		20.10	21.10	22.10	23.10	24.10	25.10	26.10	
Ord Price Type		Sell & Buy Trades in (GWh) per Price Type							(%)
PPT	(S)	31.387	26.987	32.546	39.620	56.198	41.294	50.015	34.68%
HBD	(S)	52.624	50.369	56.335	59.590	62.633	62.850	59.625	41.35%
BLK	(S)	52.570	52.639	52.857	41.345	28.659	35.703	28.480	19.75%
CPL	(S)	7.466	14.016	4.188	5.201	3.053	3.444	6.093	4.23%
PPT	(B)	16.695	16.349	16.351	17.275	18.245	17.456	16.596	11.51%
HBD	(B)	126.344	127.504	126.280	124.500	126.245	118.887	114.990	79.74%
BLK	(B)	0.000	0.000	0.000	0.000	0.000	0.000	0.000	0.00%
CPL	(B)	1.008	0.159	3.295	3.981	6.052	6.949	12.627	8.76%
		Sell & Buy Orders Traded per Price Type							(%)
PPT	(S)	1394	1438	1368	1379	1487	1450	1478	38.95%
HBD	(S)	2612	2711	2714	2599	2037	2476	2308	60.82%
BLK	(S)	20	17	18	18	9	13	9	0.24%
PPT	(B)	2334	2320	2345	2392	2400	2414	2407	35.04%
HBD	(B)	4257	4230	4258	4215	4408	4229	4462	64.96%
BLK	(B)	0	0	0	0	0	0	0	0.00%

MCP	Market Clearing Price (€/MWh)
PPT	Priority Price-Taking
HBD	Hybrid
BLK	Block
CPL	Market Coupling Flow

Trade's Volume Mix

		Sell - MWh	Buy - MWh	
Lignite	(0.0%)	64	0	(0.0%)
Crete Conv.	(2.5%)	3,667	0	(0.0%)
Gas	(26.9%)	38,745	0	(0.0%)
Hydro	(2.2%)	3,132	0	(0.0%)
Imports	(7.5%)	10,787		
RES	(60.2%)	86,862	1,219	(0.8%)
Crete RES	(0.7%)	956	0	(0.0%)
HV Load	(0.0%)	0	18,555	(12.9%)
MV Load	(0.0%)	0	22,404	(15.5%)
LV Load	(0.0%)	0	67,845	(47.0%)
Crete Load	(0.0%)	0	7,673	(5.3%)
Pumping	(0.0%)	0	1,375	(1.0%)
Exports			22,941	(15.9%)
Sys.Losses	(0.0%)	0	2,202	(1.5%)
D/R Load	(0.0%)	0	0	(0.0%)

