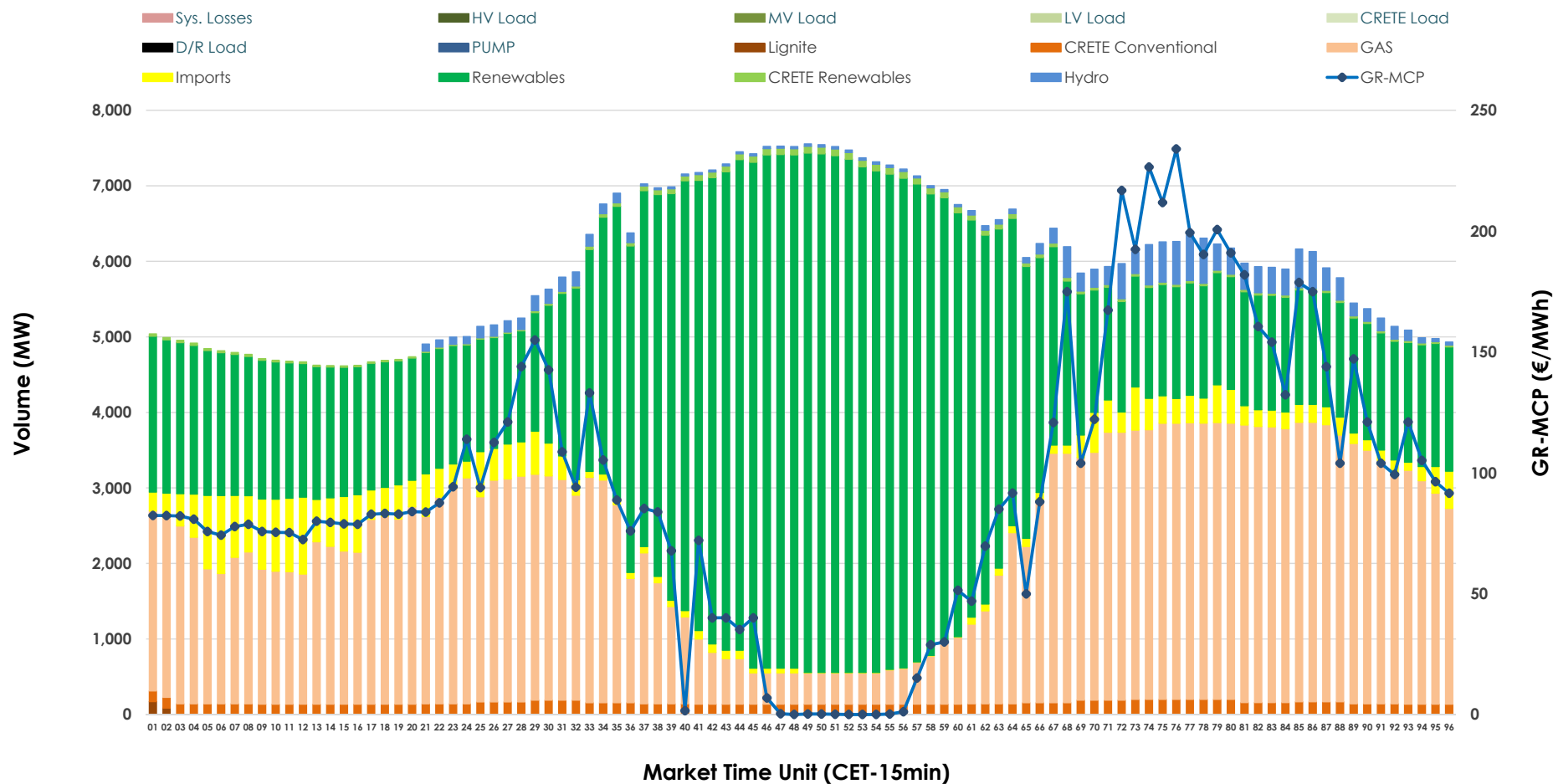


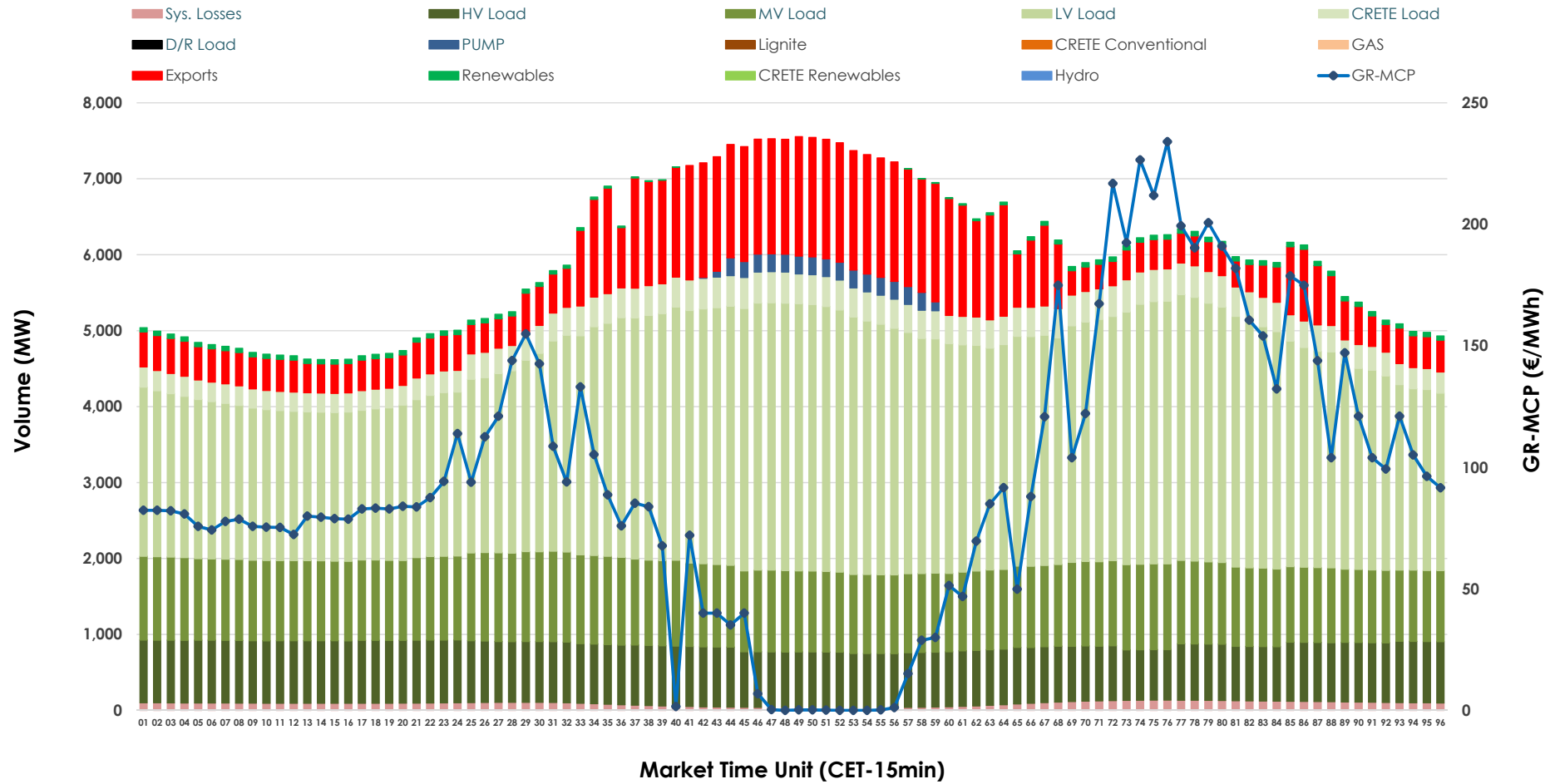


## Day-Ahead Market Outlook

25.10.2025 Day-Ahead Market - Sell



## 25.10.2025 Day-Ahead Market - Buy



### GR Bidding Zone Weekly Figures

Delivery Day	19.10	20.10	21.10	22.10	23.10	24.10	25.10
	📉 -11%	📈 53%	📉 -4%	📉 -9%	📉 -21%	📉 -38%	📈 40%
Avg.MCP (€/MWh)	103.48	158.33	151.76	137.64	109.31	67.27	94.13
Max.MCP (€/MWh)	206.39	398.44	320.88	329.06	201.34	159.98	233.98
Min.MCP (€/MWh)	15.86	77.26	85.66	83.55	33.08	-0.10	0.01
	📉 -8%	📈 11%	➡️ 0%	📈 1%	➡️ 0%	📈 3%	📉 -5%
Tot.Vol(GWh)	258.41	288.09	288.02	291.85	291.51	301.08	286.58

### Trades by Order Type

Delivery Day		19.10	20.10	21.10	22.10	23.10	24.10	25.10	
Ord Price Type		Sell & Buy Trades in (GWh) per Price Type							(%)
PPT	(S)	31.665	31.387	26.987	32.546	39.620	56.198	41.294	28.82%
HBD	(S)	50.748	52.624	50.369	56.335	59.590	62.633	62.850	43.86%
BLK	(S)	40.187	52.570	52.639	52.857	41.345	28.659	35.703	24.92%
CPL	(S)	6.604	7.466	14.016	4.188	5.201	3.053	3.444	2.40%
PPT	(B)	14.082	16.695	16.349	16.351	17.275	18.245	17.456	12.18%
HBD	(B)	114.159	126.344	127.504	126.280	124.500	126.245	118.887	82.97%
BLK	(B)	0.000	0.000	0.000	0.000	0.000	0.000	0.000	0.00%
CPL	(B)	0.965	1.008	0.159	3.295	3.981	6.052	6.949	4.85%
		Sell & Buy Orders Traded per Price Type							(%)
PPT	(S)	1392	1394	1438	1368	1379	1487	1450	36.81%
HBD	(S)	2638	2612	2711	2714	2599	2037	2476	62.86%
BLK	(S)	16	20	17	18	18	9	13	0.33%
PPT	(B)	2298	2334	2320	2345	2392	2400	2414	36.34%
HBD	(B)	4236	4257	4230	4258	4215	4408	4229	63.66%
BLK	(B)	0	0	0	0	0	0	0	0.00%

MCP	Market Clearing Price (€/MWh)
PPT	Priority Price-Taking
HBD	Hybrid
BLK	Block
CPL	Market Coupling Flow

### Trade's Volume Mix

		Sell - MWh	Buy - MWh	
Lignite	(0.0%)	64	0	(0.0%)
Crete Conv.	(2.6%)	3,659	0	(0.0%)
Gas	(37.9%)	54,350	0	(0.0%)
Hydro	(2.3%)	3,231	0	(0.0%)
Imports	(5.0%)	7,231		
RES	(51.4%)	73,722	954	(0.7%)
Crete RES	(0.7%)	1,033	0	(0.0%)
HV Load	(0.0%)	0	18,514	(12.9%)
MV Load	(0.0%)	0	25,745	(18.0%)
LV Load	(0.0%)	0	67,493	(47.1%)
Crete Load	(0.0%)	0	8,347	(5.8%)
Pumping	(0.0%)	0	926	(0.6%)
Exports			19,174	(13.4%)
Sys.Losses	(0.0%)	0	2,137	(1.5%)
D/R Load	(0.0%)	0	0	(0.0%)

