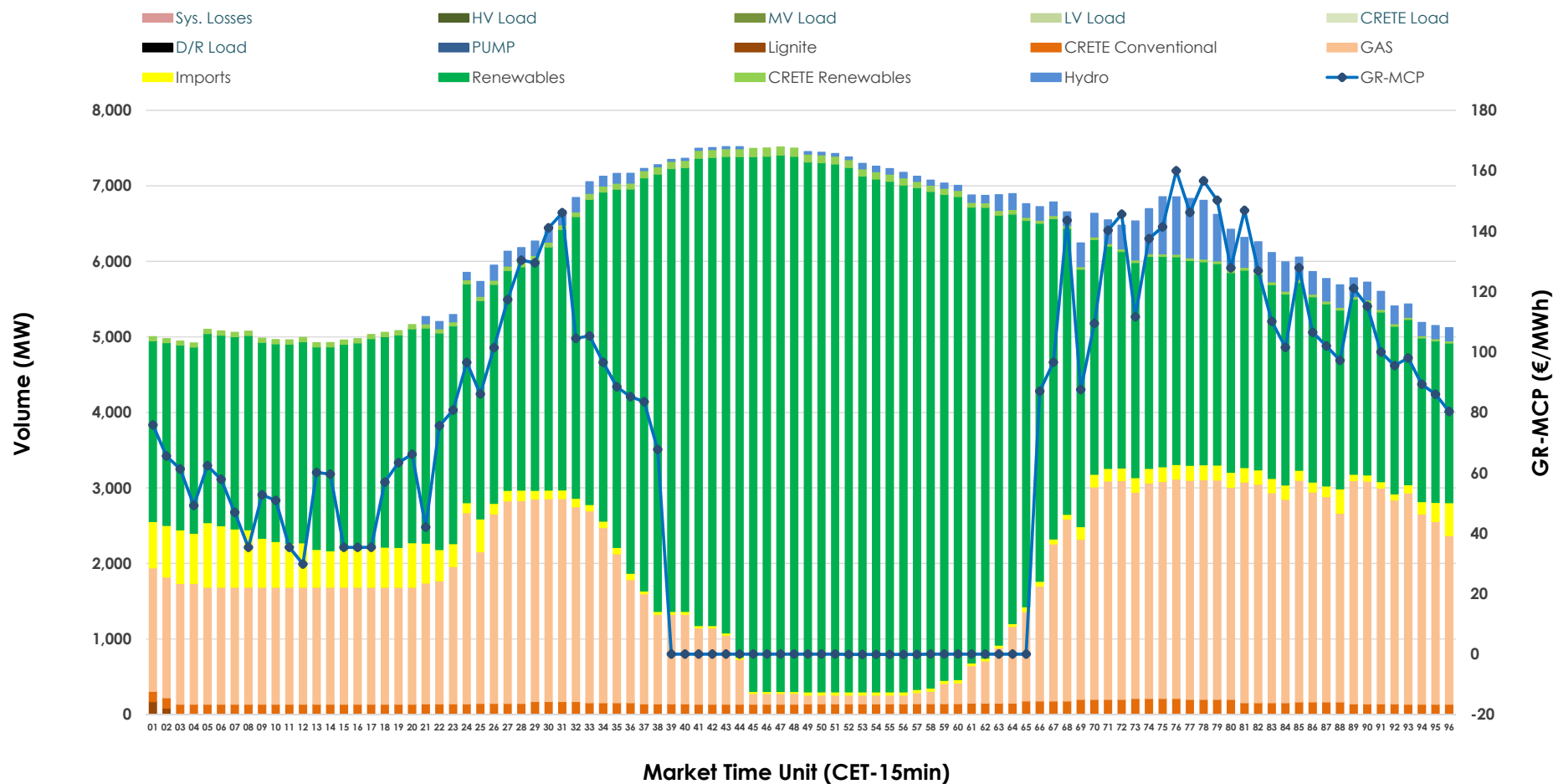


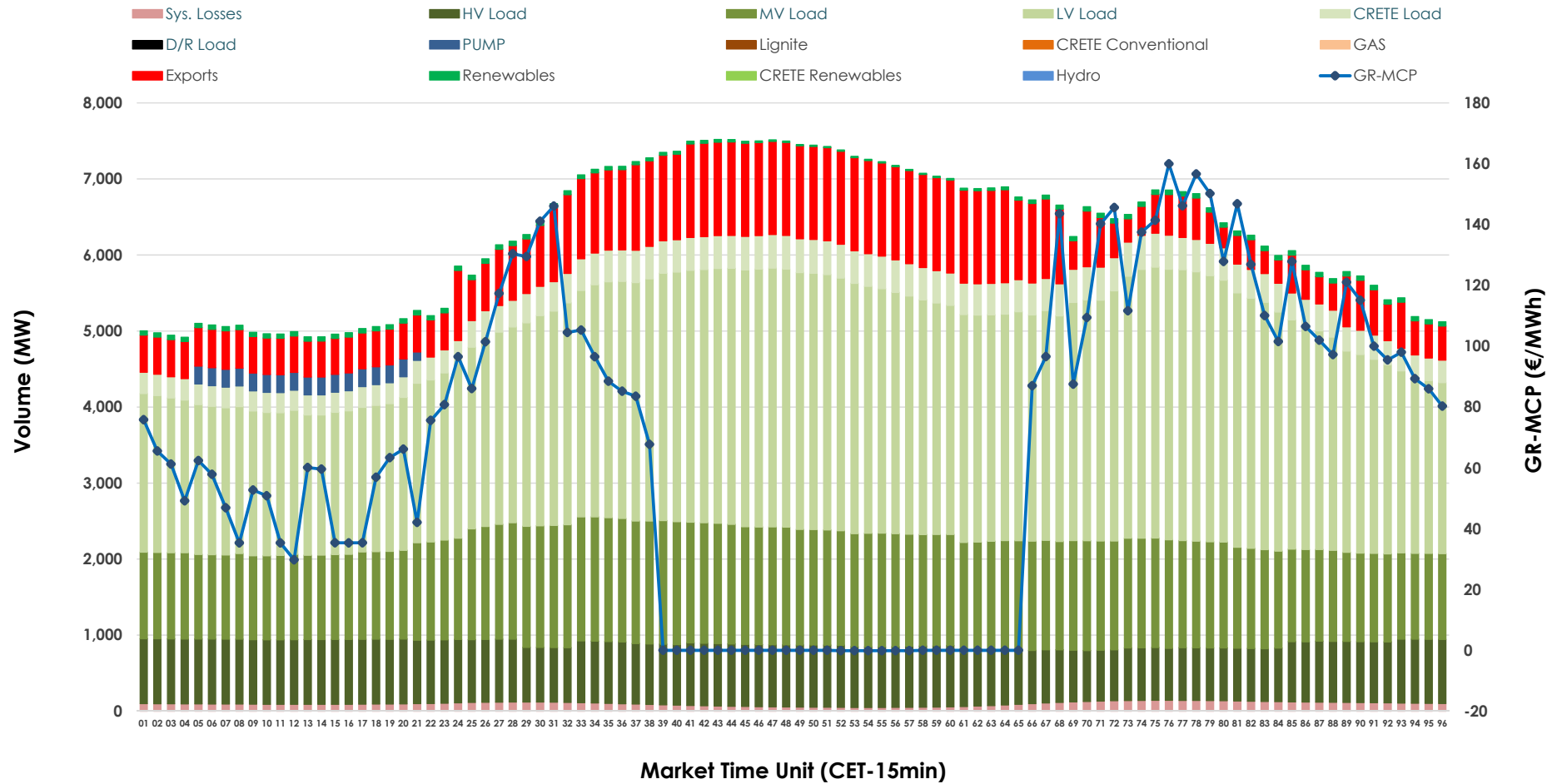


## Day-Ahead Market Outlook

24.10.2025 Day-Ahead Market - Sell



## 24.10.2025 Day-Ahead Market - Buy



### GR Bidding Zone Weekly Figures

Delivery Day	18.10	19.10	20.10	21.10	22.10	23.10	24.10
	📉 -9%	📉 -11%	📈 53%	📉 -4%	📉 -9%	📉 -21%	📉 -38%
Avg.MCP (€/MWh)	115.64	103.48	158.33	151.76	137.64	109.31	67.27
Max.MCP (€/MWh)	198.87	206.39	398.44	320.88	329.06	201.34	159.98
Min.MCP (€/MWh)	43.59	15.86	77.26	85.66	83.55	33.08	-0.10
	📉 -5%	📉 -8%	📈 11%	➡️ 0%	📈 1%	➡️ 0%	📈 3%
Tot.Vol(GWh)	282.17	258.41	288.09	288.02	291.85	291.51	301.08

### Trades by Order Type

Delivery Day		18.10	19.10	20.10	21.10	22.10	23.10	24.10	
Ord Price Type		Sell & Buy Trades in (GWh) per Price Type							(%)
PPT	(S)	32.788	31.665	31.387	26.987	32.546	39.620	56.198	37.33%
HBD	(S)	55.222	50.748	52.624	50.369	56.335	59.590	62.633	41.60%
BLK	(S)	47.735	40.187	52.570	52.639	52.857	41.345	28.659	19.04%
CPL	(S)	5.340	6.604	7.466	14.016	4.188	5.201	3.053	2.03%
PPT	(B)	15.740	14.082	16.695	16.349	16.351	17.275	18.245	12.12%
HBD	(B)	120.593	114.159	126.344	127.504	126.280	124.500	126.245	83.86%
BLK	(B)	0.000	0.000	0.000	0.000	0.000	0.000	0.000	0.00%
CPL	(B)	4.752	0.965	1.008	0.159	3.295	3.981	6.052	4.02%
		Sell & Buy Orders Traded per Price Type							(%)
PPT	(S)	1313	1392	1394	1438	1368	1379	1487	42.09%
HBD	(S)	2623	2638	2612	2711	2714	2599	2037	57.66%
BLK	(S)	24	16	20	17	18	18	9	0.25%
PPT	(B)	2297	2298	2334	2320	2345	2392	2400	35.25%
HBD	(B)	4143	4236	4257	4230	4258	4215	4408	64.75%
BLK	(B)	0	0	0	0	0	0	0	0.00%

<b>MCP</b>	Market Clearing Price (€/MWh)
<b>PPT</b>	Priority Price-Taking
<b>HBD</b>	Hybrid
<b>BLK</b>	Block
<b>CPL</b>	Market Coupling Flow

### Trade's Volume Mix

		Sell - MWh	Buy - MWh	
Lignite	(0.0%)	64	0	(0.0%)
Crete Conv.	(2.4%)	3,685	0	(0.0%)
Gas	(27.6%)	41,485	0	(0.0%)
Hydro	(2.6%)	3,906	0	(0.0%)
Imports	(3.6%)	5,455		
RES	(62.7%)	94,464	1,113	(0.7%)
Crete RES	(1.0%)	1,484	0	(0.0%)
HV Load	(0.0%)	0	18,908	(12.6%)
MV Load	(0.0%)	0	32,878	(21.8%)
LV Load	(0.0%)	0	67,078	(44.6%)
Crete Load	(0.0%)	0	8,898	(5.9%)
Pumping	(0.0%)	0	968	(0.6%)
Exports			18,372	(12.2%)
Sys.Losses	(0.0%)	0	2,328	(1.5%)
D/R Load	(0.0%)	0	0	(0.0%)

