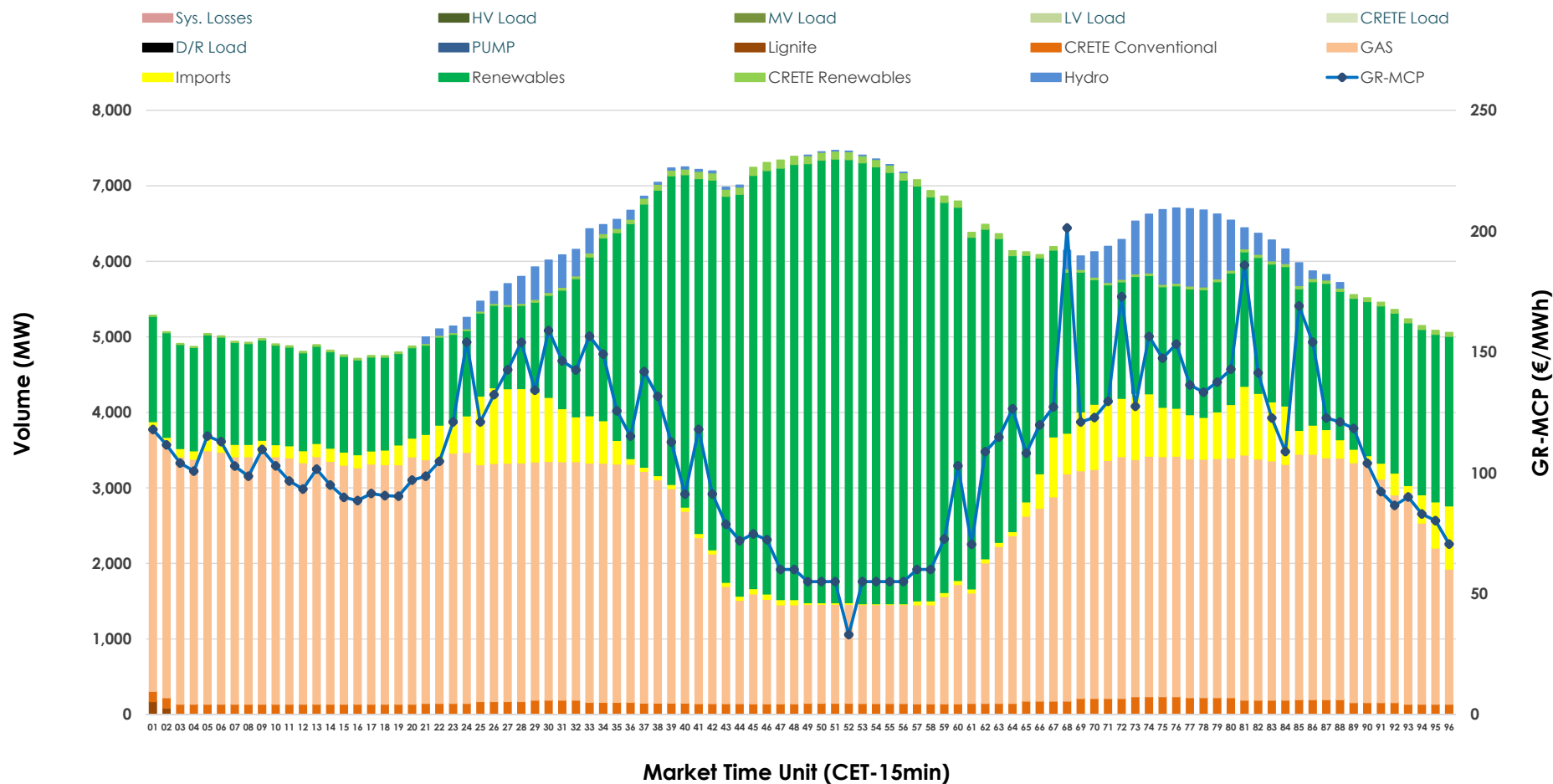


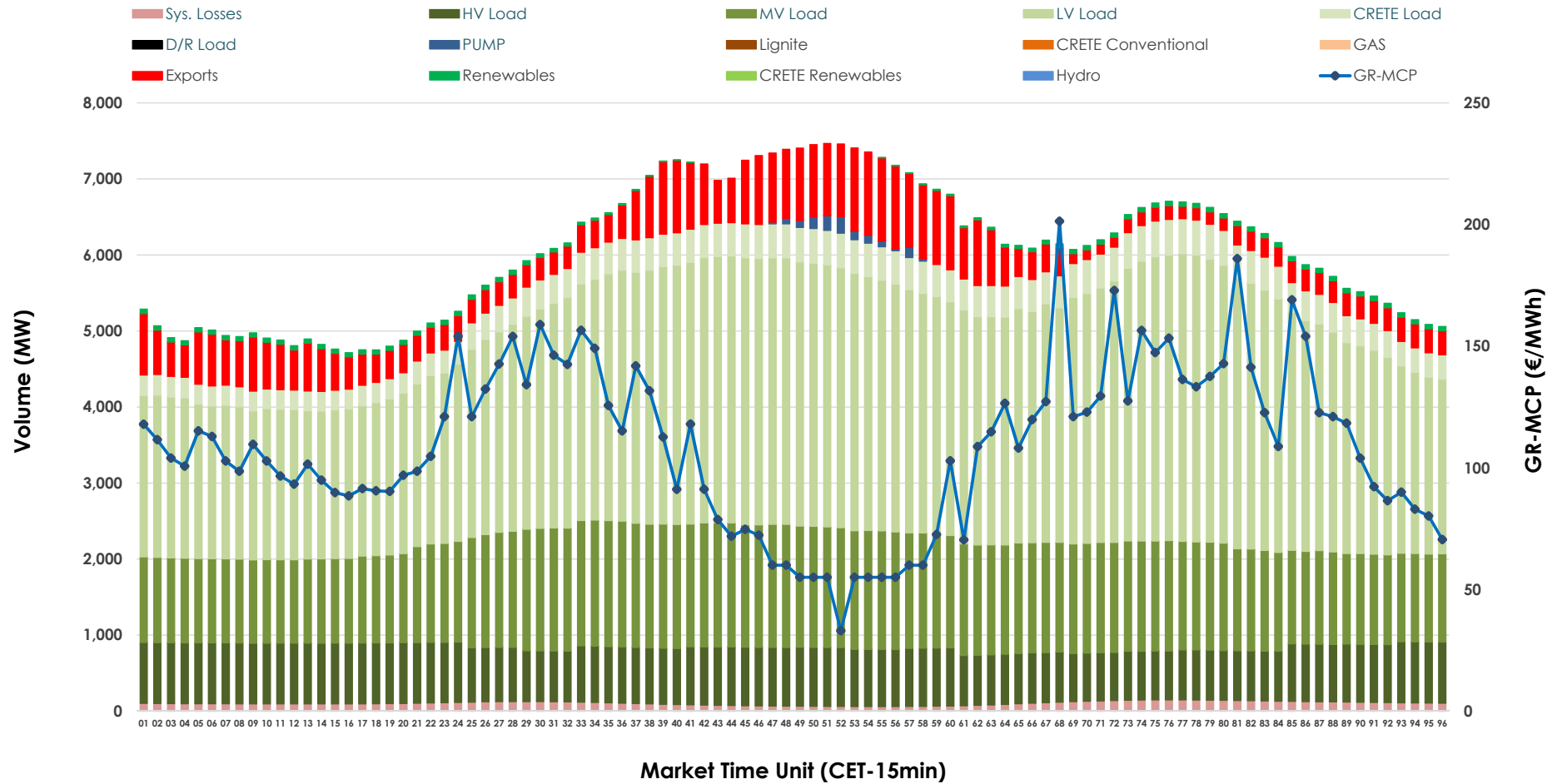


## Day-Ahead Market Outlook

23.10.2025 Day-Ahead Market - Sell



## 23.10.2025 Day-Ahead Market - Buy



### GR Bidding Zone Weekly Figures

Delivery Day	17.10	18.10	19.10	20.10	21.10	22.10	23.10
	👇 -4%	👇 -9%	👇 -11%	👆 53%	👇 -4%	👇 -9%	👇 -21%
<b>Avg.MCP (€/MWh)</b>	126.61	115.64	103.48	158.33	151.76	137.64	109.31
<b>Max.MCP (€/MWh)</b>	249.73	198.87	206.39	398.44	320.88	329.06	201.34
<b>Min.MCP (€/MWh)</b>	86.57	43.59	15.86	77.26	85.66	83.55	33.08
	➡ -1%	👇 -5%	👇 -8%	👆 11%	➡ 0%	👆 1%	➡ 0%
<b>Tot.Vol(GWh)</b>	297.50	282.17	258.41	288.09	288.02	291.85	291.51

### Trades by Order Type

Delivery Day		17.10	18.10	19.10	20.10	21.10	22.10	23.10	
Ord Price Type		Sell & Buy Trades in (GWh) per Price Type							(%)
PPT	(S)	33.750	32.788	31.665	31.387	26.987	32.546	39.620	27.18%
HBD	(S)	56.892	55.222	50.748	52.624	50.369	56.335	59.590	40.88%
BLK	(S)	57.980	47.735	40.187	52.570	52.639	52.857	41.345	28.37%
CPL	(S)	0.127	5.340	6.604	7.466	14.016	4.188	5.201	3.57%
PPT	(B)	15.137	15.740	14.082	16.695	16.349	16.351	17.275	11.85%
HBD	(B)	127.384	120.593	114.159	126.344	127.504	126.280	124.500	85.42%
BLK	(B)	0.000	0.000	0.000	0.000	0.000	0.000	0.000	0.00%
CPL	(B)	6.227	4.752	0.965	1.008	0.159	3.295	3.981	2.73%
		Sell & Buy Orders Traded per Price Type							(%)
PPT	(S)	1336	1313	1392	1394	1438	1368	1379	34.51%
HBD	(S)	2743	2623	2638	2612	2711	2714	2599	65.04%
BLK	(S)	21	24	16	20	17	18	18	0.45%
PPT	(B)	2253	2297	2298	2334	2320	2345	2392	36.20%
HBD	(B)	4160	4143	4236	4257	4230	4258	4215	63.80%
BLK	(B)	0	0	0	0	0	0	0	0.00%

<b>MCP</b>	Market Clearing Price (€/MWh)
<b>PPT</b>	Priority Price-Taking
<b>HBD</b>	Hybrid
<b>BLK</b>	Block
<b>CPL</b>	Market Coupling Flow

### Trade's Volume Mix

		Sell - MWh	Buy - MWh	
Lignite	(0.0%)	64	0	(0.0%)
Crete Conv.	(2.7%)	3,898	0	(0.0%)
Gas	(44.5%)	64,796	0	(0.0%)
Hydro	(2.4%)	3,552	0	(0.0%)
Imports	(5.6%)	8,190		
RES	(43.9%)	64,046	970	(0.7%)
Crete RES	(0.8%)	1,210	0	(0.0%)
HV Load	(0.0%)	0	17,719	(12.2%)
MV Load	(0.0%)	0	33,297	(22.8%)
LV Load	(0.0%)	0	69,677	(47.8%)
Crete Load	(0.0%)	0	9,112	(6.3%)
Pumping	(0.0%)	0	305	(0.2%)
Exports			12,197	(8.4%)
Sys.Losses	(0.0%)	0	2,479	(1.7%)
D/R Load	(0.0%)	0	0	(0.0%)

