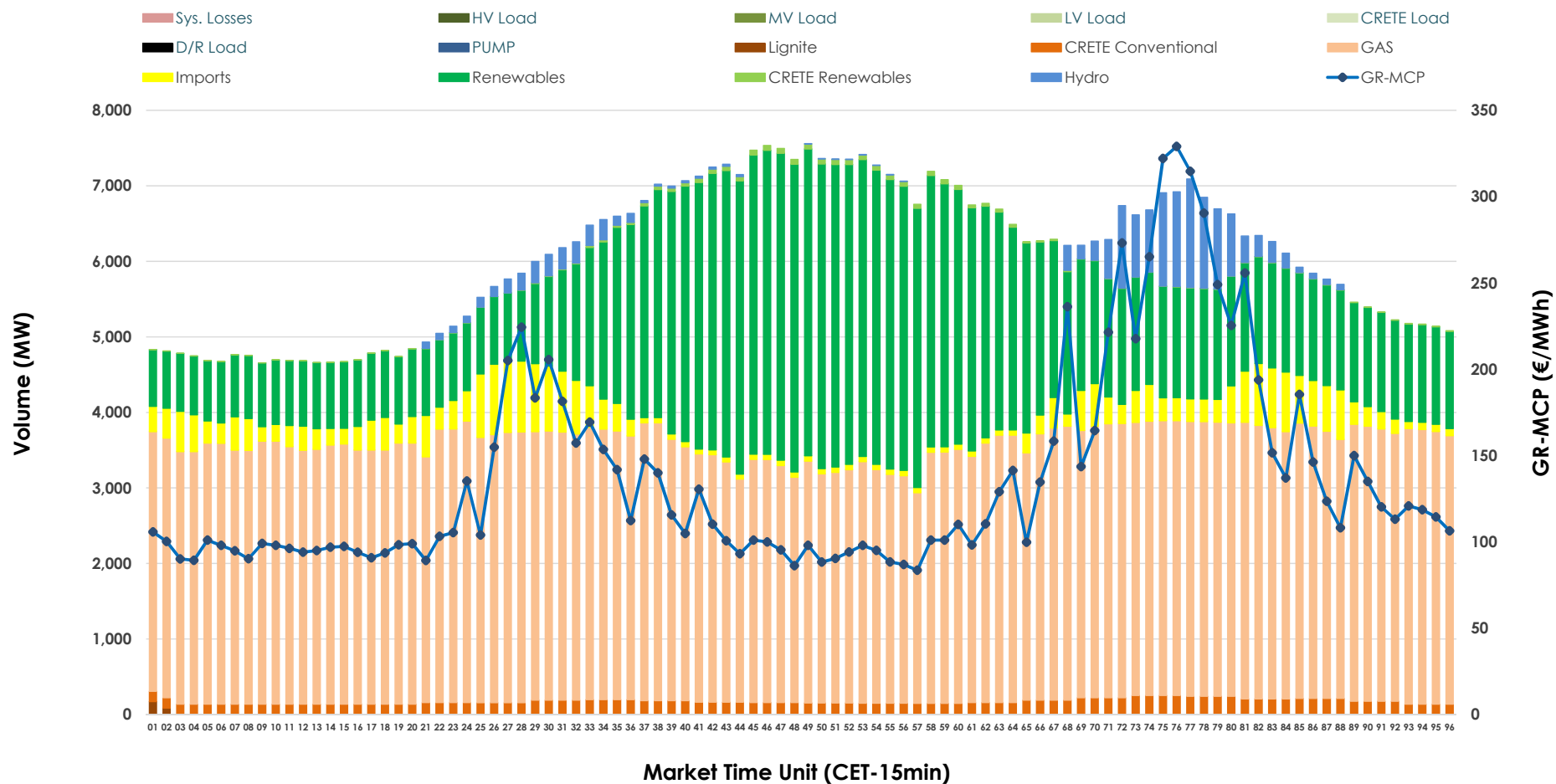


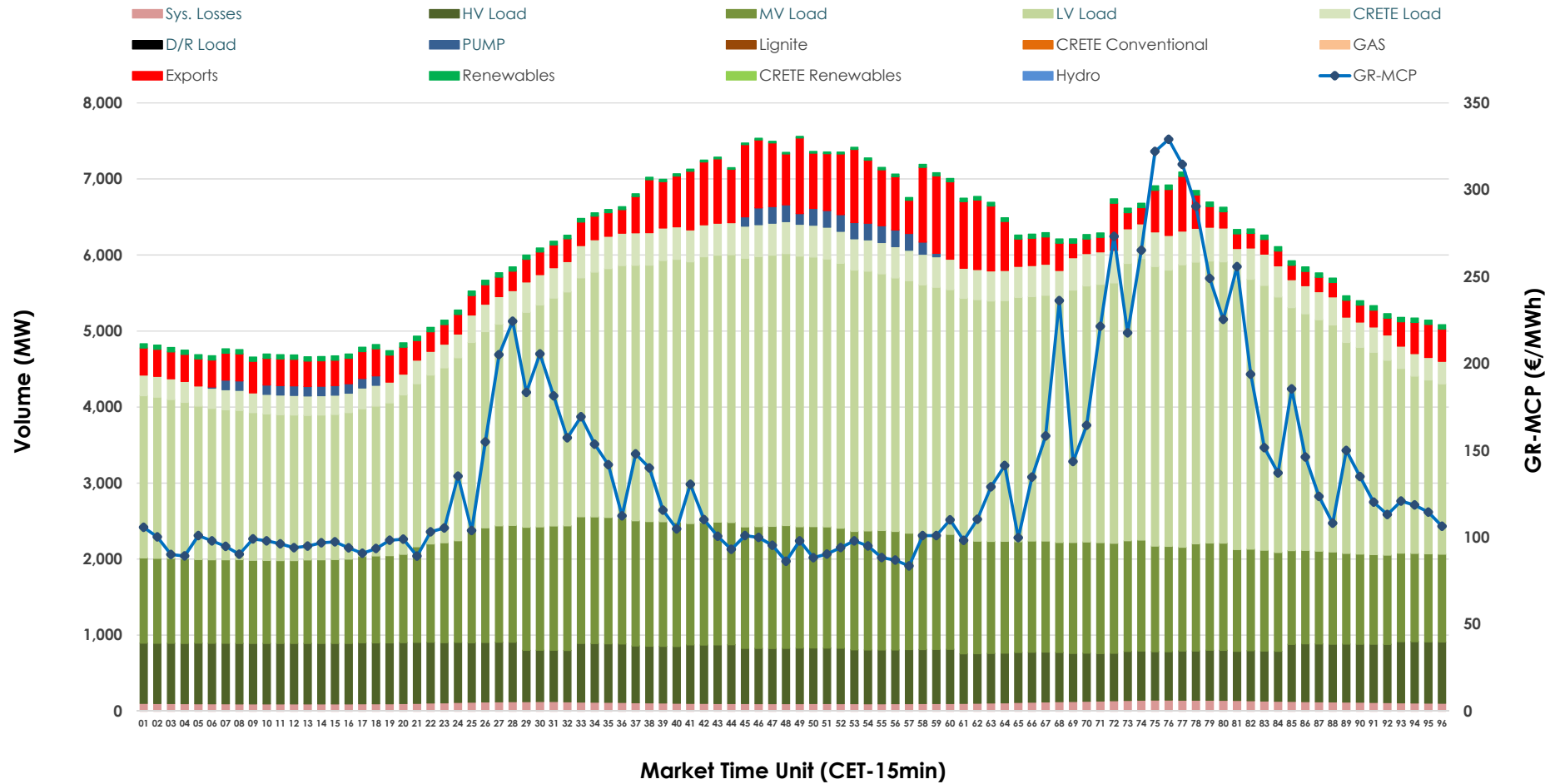


## Day-Ahead Market Outlook

22.10.2025 Day-Ahead Market - Sell



## 22.10.2025 Day-Ahead Market - Buy



### GR Bidding Zone Weekly Figures

Delivery Day	16.10	17.10	18.10	19.10	20.10	21.10	22.10
	📉 -17%	📉 -4%	📉 -9%	📉 -11%	📈 53%	📉 -4%	📉 -9%
Avg.MCP (€/MWh)	131.30	126.61	115.64	103.48	158.33	151.76	137.64
Max.MCP (€/MWh)	342.46	249.73	198.87	206.39	398.44	320.88	329.06
Min.MCP (€/MWh)	76.01	86.57	43.59	15.86	77.26	85.66	83.55
	📈 2%	📉 -1%	📉 -5%	📉 -8%	📈 11%	📉 0%	📈 1%
Tot.Vol(GWh)	299.66	297.50	282.17	258.41	288.09	288.02	291.85

### Trades by Order Type

Delivery Day		16.10	17.10	18.10	19.10	20.10	21.10	22.10	
Ord Price Type		Sell & Buy Trades in (GWh) per Price Type							(%)
PPT	(S)	36.198	33.750	32.788	31.665	31.387	26.987	32.546	22.30%
HBD	(S)	60.347	56.892	55.222	50.748	52.624	50.369	56.335	38.61%
BLK	(S)	53.119	57.980	47.735	40.187	52.570	52.639	52.857	36.22%
CPL	(S)	0.164	0.127	5.340	6.604	7.466	14.016	4.188	2.87%
PPT	(B)	16.086	15.137	15.740	14.082	16.695	16.349	16.351	11.20%
HBD	(B)	124.904	127.384	120.593	114.159	126.344	127.504	126.280	86.54%
BLK	(B)	0.000	0.000	0.000	0.000	0.000	0.000	0.000	0.00%
CPL	(B)	8.838	6.227	4.752	0.965	1.008	0.159	3.295	2.26%
		Sell & Buy Orders Traded per Price Type							(%)
PPT	(S)	1264	1336	1313	1392	1394	1438	1368	33.37%
HBD	(S)	2657	2743	2623	2638	2612	2711	2714	66.20%
BLK	(S)	18	21	24	16	20	17	18	0.44%
PPT	(B)	2306	2253	2297	2298	2334	2320	2345	35.51%
HBD	(B)	4091	4160	4143	4236	4257	4230	4258	64.49%
BLK	(B)	0	0	0	0	0	0	0	0.00%

<b>MCP</b>	Market Clearing Price (€/MWh)
<b>PPT</b>	Priority Price-Taking
<b>HBD</b>	Hybrid
<b>BLK</b>	Block
<b>CPL</b>	Market Coupling Flow

### Trade's Volume Mix

		Sell - MWh		Buy - MWh	
Lignite	(0.0%)	64	0	0	(0.0%)
Crete Conv.	(2.8%)	4,125	0	0	(0.0%)
Gas	(56.7%)	82,732	0	0	(0.0%)
Hydro	(2.7%)	3,895	0	0	(0.0%)
Imports	(5.4%)	7,813	0	0	(0.0%)
RES	(32.1%)	46,792	1,149	0	(0.8%)
Crete RES	(0.3%)	506	0	0	(0.0%)
HV Load	(0.0%)	0	17,607	0	(12.1%)
MV Load	(0.0%)	0	33,309	0	(22.8%)
LV Load	(0.0%)	0	70,335	0	(48.2%)
Crete Load	(0.0%)	0	8,858	0	(6.1%)
Pumping	(0.0%)	0	1,068	0	(0.7%)
Exports		0	10,901	0	(7.5%)
Sys.Losses	(0.0%)	0	2,699	0	(1.8%)
D/R Load	(0.0%)	0	0	0	(0.0%)

