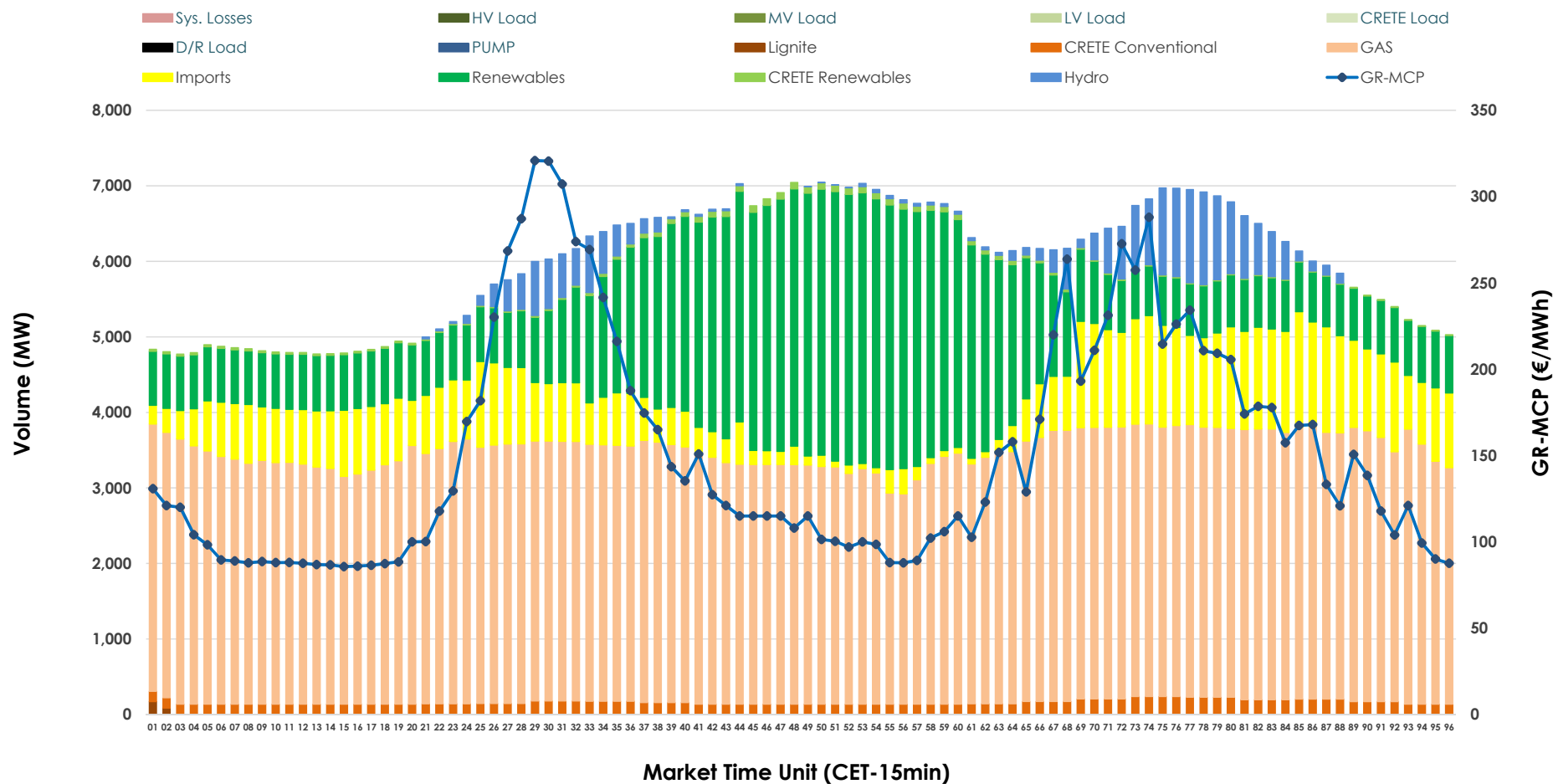


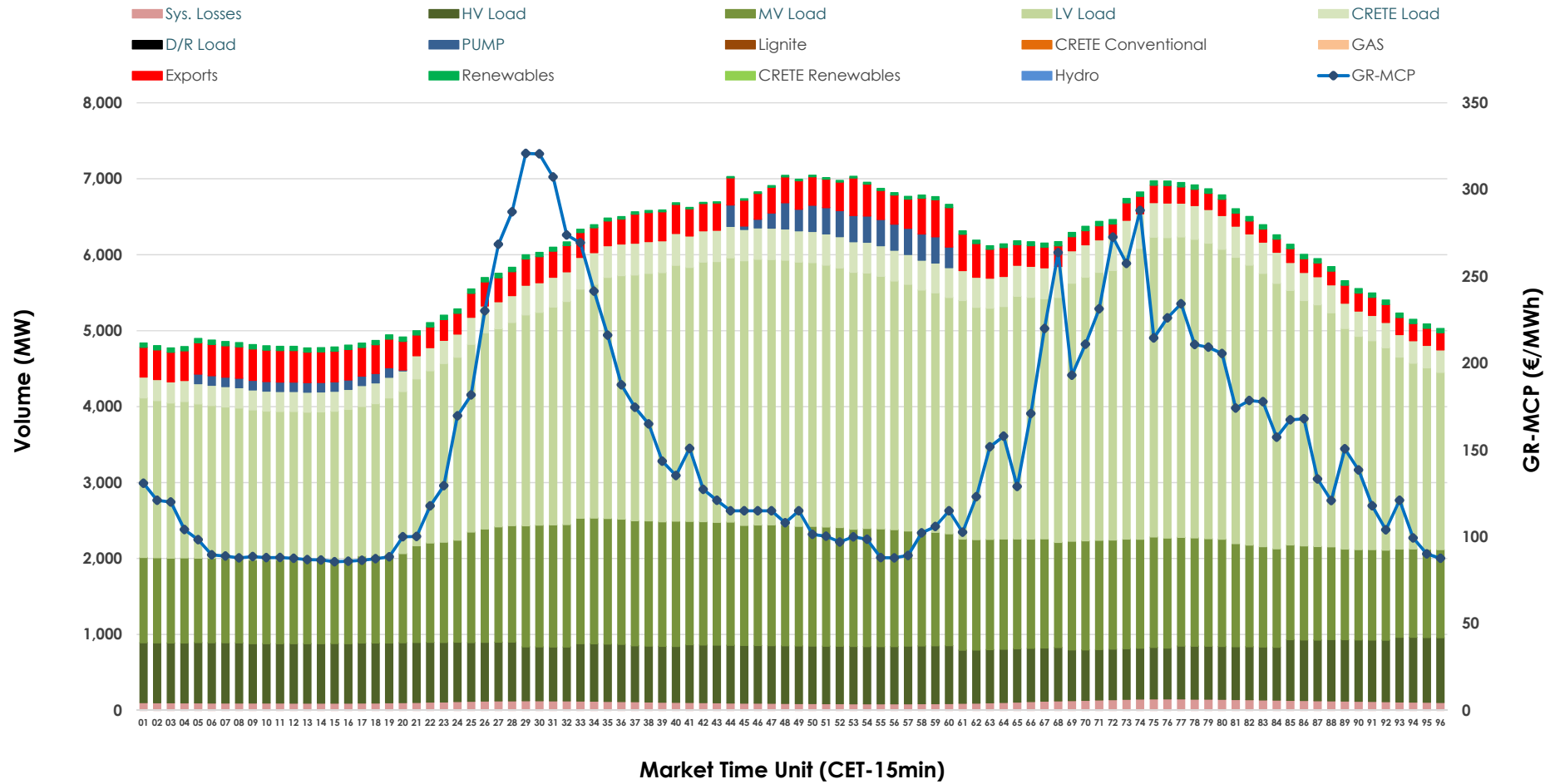


## Day-Ahead Market Outlook

21.10.2025 Day-Ahead Market - Sell



## 21.10.2025 Day-Ahead Market - Buy



### GR Bidding Zone Weekly Figures

Delivery Day	15.10	16.10	17.10	18.10	19.10	20.10	21.10
	↗ 3%	↘ -17%	↘ -4%	↘ -9%	↘ -11%	↗ 53%	↘ -4%
Avg.MCP (€/MWh)	158.21	131.30	126.61	115.64	103.48	158.33	151.76
Max.MCP (€/MWh)	491.13	342.46	249.73	198.87	206.39	398.44	320.88
Min.MCP (€/MWh)	0.01	76.01	86.57	43.59	15.86	77.26	85.66
	➡ -1%	↗ 2%	➡ -1%	↘ -5%	↘ -8%	↗ 11%	➡ 0%
Tot.Vol(GWh)	294.40	299.66	297.50	282.17	258.41	288.09	288.02

### Trades by Order Type

Delivery Day		15.10	16.10	17.10	18.10	19.10	20.10	21.10	
Ord Price Type		Sell & Buy Trades in (GWh) per Price Type							(%)
PPT	(S)	33.108	36.198	33.750	32.788	31.665	31.387	26.987	18.74%
HBD	(S)	55.887	60.347	56.892	55.222	50.748	52.624	50.369	34.98%
BLK	(S)	55.807	53.119	57.980	47.735	40.187	52.570	52.639	36.55%
CPL	(S)	2.400	0.164	0.127	5.340	6.604	7.466	14.016	9.73%
PPT	(B)	16.444	16.086	15.137	15.740	14.082	16.695	16.349	11.35%
HBD	(B)	124.771	124.904	127.384	120.593	114.159	126.344	127.504	88.54%
BLK	(B)	0.000	0.000	0.000	0.000	0.000	0.000	0.000	0.00%
CPL	(B)	5.987	8.838	6.227	4.752	0.965	1.008	0.159	0.11%
		Sell & Buy Orders Traded per Price Type							(%)
PPT	(S)	1352	1264	1336	1313	1392	1394	1438	34.52%
HBD	(S)	2641	2657	2743	2623	2638	2612	2711	65.07%
BLK	(S)	20	18	21	24	16	20	17	0.41%
PPT	(B)	2319	2306	2253	2297	2298	2334	2320	35.42%
HBD	(B)	4032	4091	4160	4143	4236	4257	4230	64.58%
BLK	(B)	0	0	0	0	0	0	0	0.00%

<b>MCP</b>	Market Clearing Price (€/MWh)
<b>PPT</b>	Priority Price-Taking
<b>HBD</b>	Hybrid
<b>BLK</b>	Block
<b>CPL</b>	Market Coupling Flow

### Trade's Volume Mix

		Sell - MWh		Buy - MWh	
Lignite	(0.0%)	64	0	0	(0.0%)
Crete Conv.	(2.7%)	3,852	0	0	(0.0%)
Gas	(56.0%)	80,664	0	0	(0.0%)
Hydro	(3.7%)	5,381	0	0	(0.0%)
Imports	(12.2%)	17,639	0	0	(0.0%)
RES	(24.7%)	35,508	1,129	0	(0.8%)
Crete RES	(0.6%)	904	0	0	(0.0%)
HV Load	(0.0%)	0	18,084	0	(12.6%)
MV Load	(0.0%)	0	33,255	0	(23.1%)
LV Load	(0.0%)	0	70,609	0	(49.0%)
Crete Load	(0.0%)	0	8,798	0	(6.1%)
Pumping	(0.0%)	0	1,720	0	(1.2%)
Exports		0	7,731	0	(5.4%)
Sys.Losses	(0.0%)	0	2,686	0	(1.9%)
D/R Load	(0.0%)	0	0	0	(0.0%)

