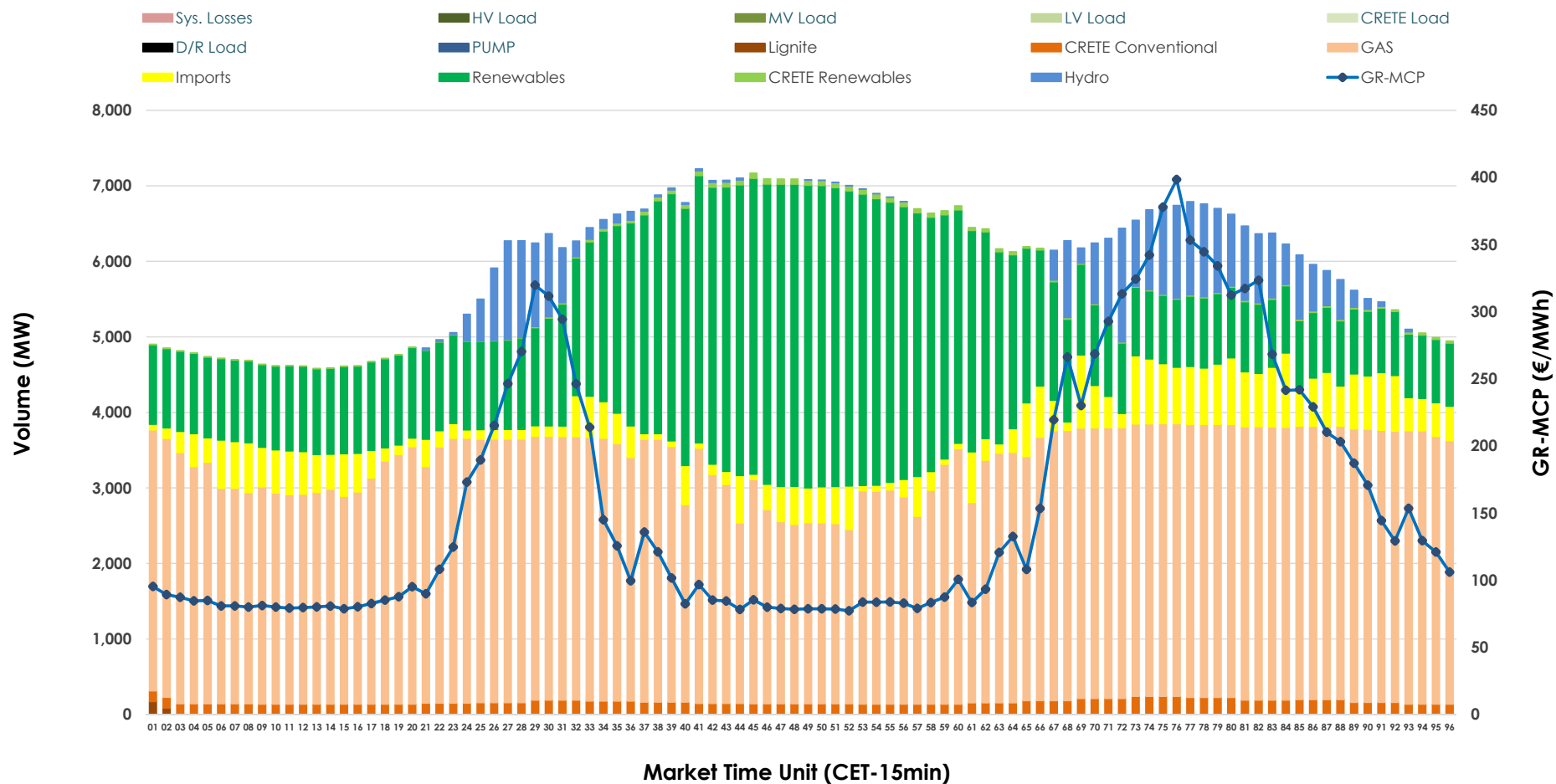


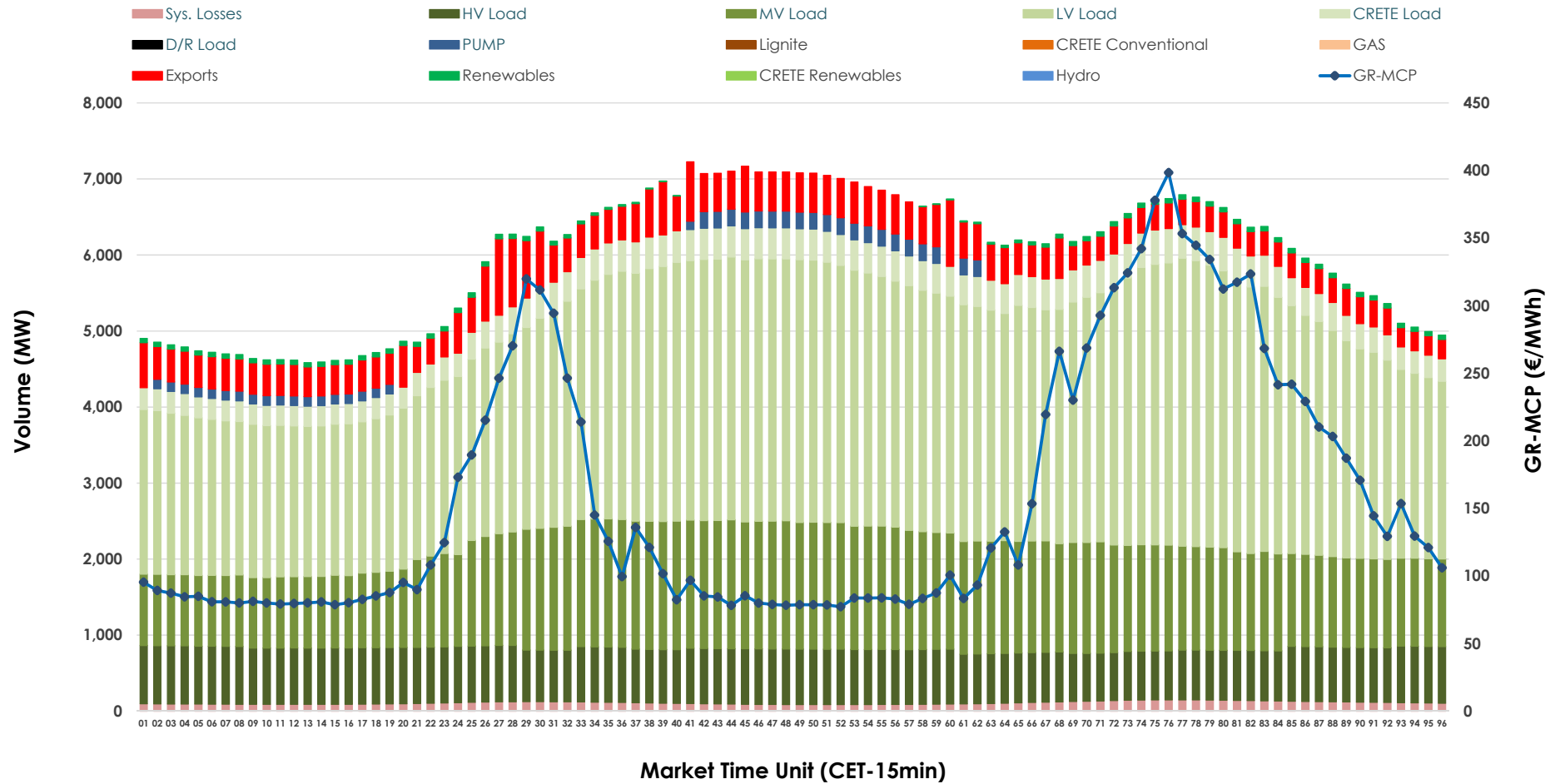


Day-Ahead Market Outlook

20.10.2025 Day-Ahead Market - Sell



20.10.2025 Day-Ahead Market - Buy



GR Bidding Zone Weekly Figures

Delivery Day	14.10	15.10	16.10	17.10	18.10	19.10	20.10
	⬇️ -3%	⬆️ 3%	⬇️ -17%	⬇️ -4%	⬇️ -9%	⬇️ -11%	⬆️ 53%
Avg.MCP (€/MWh)	153.56	158.21	131.30	126.61	115.64	103.48	158.33
Max.MCP (€/MWh)	561.15	491.13	342.46	249.73	198.87	206.39	398.44
Min.MCP (€/MWh)	0.00	0.01	76.01	86.57	43.59	15.86	77.26
	⬆️ 3%	⬆️ -1%	⬆️ 2%	⬆️ -1%	⬇️ -5%	⬇️ -8%	⬆️ 11%
Tot.Vol(GWh)	296.95	294.40	299.66	297.50	282.17	258.41	288.09

Trades by Order Type

Delivery Day		14.10	15.10	16.10	17.10	18.10	19.10	20.10	
Ord Price Type		Sell & Buy Trades in (GWh) per Price Type							(%)
PPT	(S)	31.803	33.108	36.198	33.750	32.788	31.665	31.387	21.79%
HBD	(S)	59.731	55.887	60.347	56.892	55.222	50.748	52.624	36.53%
BLK	(S)	54.473	55.807	53.119	57.980	47.735	40.187	52.570	36.49%
CPL	(S)	2.466	2.400	0.164	0.127	5.340	6.604	7.466	5.18%
PPT	(B)	15.465	16.444	16.086	15.137	15.740	14.082	16.695	11.59%
HBD	(B)	124.679	124.771	124.904	127.384	120.593	114.159	126.344	87.71%
BLK	(B)	0.000	0.000	0.000	0.000	0.000	0.000	0.000	0.00%
CPL	(B)	8.328	5.987	8.838	6.227	4.752	0.965	1.008	0.70%
		Sell & Buy Orders Traded per Price Type							(%)
PPT	(S)	1338	1352	1264	1336	1313	1392	1394	34.62%
HBD	(S)	2507	2641	2657	2743	2623	2638	2612	64.88%
BLK	(S)	23	20	18	21	24	16	20	0.50%
PPT	(B)	2274	2319	2306	2253	2297	2298	2334	35.41%
HBD	(B)	4076	4032	4091	4160	4143	4236	4257	64.59%
BLK	(B)	0	0	0	0	0	0	0	0.00%

MCP	Market Clearing Price (€/MWh)
PPT	Priority Price-Taking
HBD	Hybrid
BLK	Block
CPL	Market Coupling Flow

Trade's Volume Mix

		Sell - MWh	Buy - MWh	
Lignite	(0.0%)	64	0	(0.0%)
Crete Conv.	(2.7%)	3,925	0	(0.0%)
Gas	(53.9%)	77,591	0	(0.0%)
Hydro	(5.0%)	7,132	0	(0.0%)
Imports	(7.2%)	10,307		
RES	(30.8%)	44,347	949	(0.7%)
Crete RES	(0.5%)	681	0	(0.0%)
HV Load	(0.0%)	0	17,056	(11.8%)
MV Load	(0.0%)	0	32,549	(22.6%)
LV Load	(0.0%)	0	69,538	(48.3%)
Crete Load	(0.0%)	0	8,788	(6.1%)
Pumping	(0.0%)	0	1,690	(1.2%)
Exports			10,857	(7.5%)
Sys.Losses	(0.0%)	0	2,620	(1.8%)
D/R Load	(0.0%)	0	0	(0.0%)

