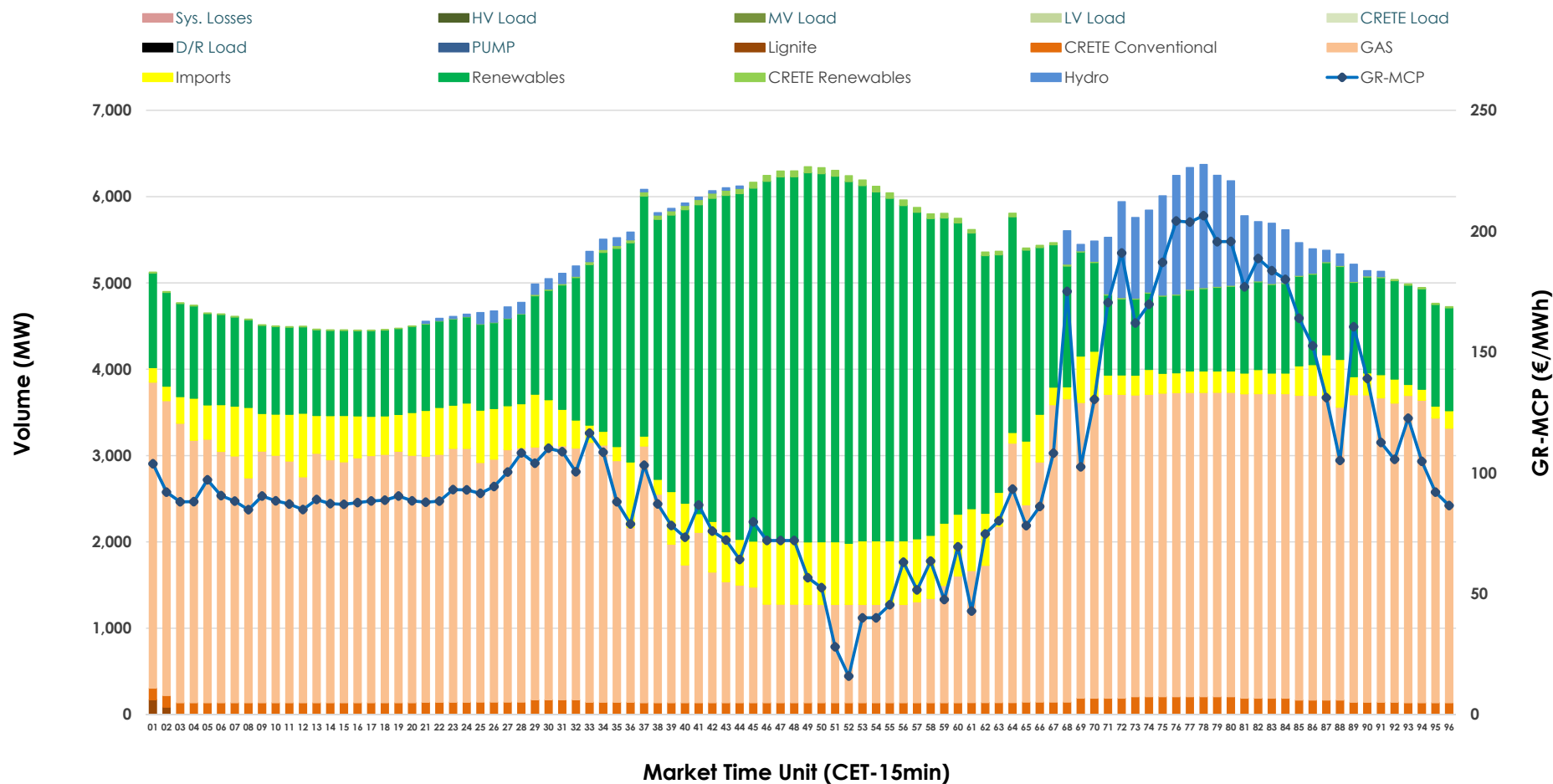


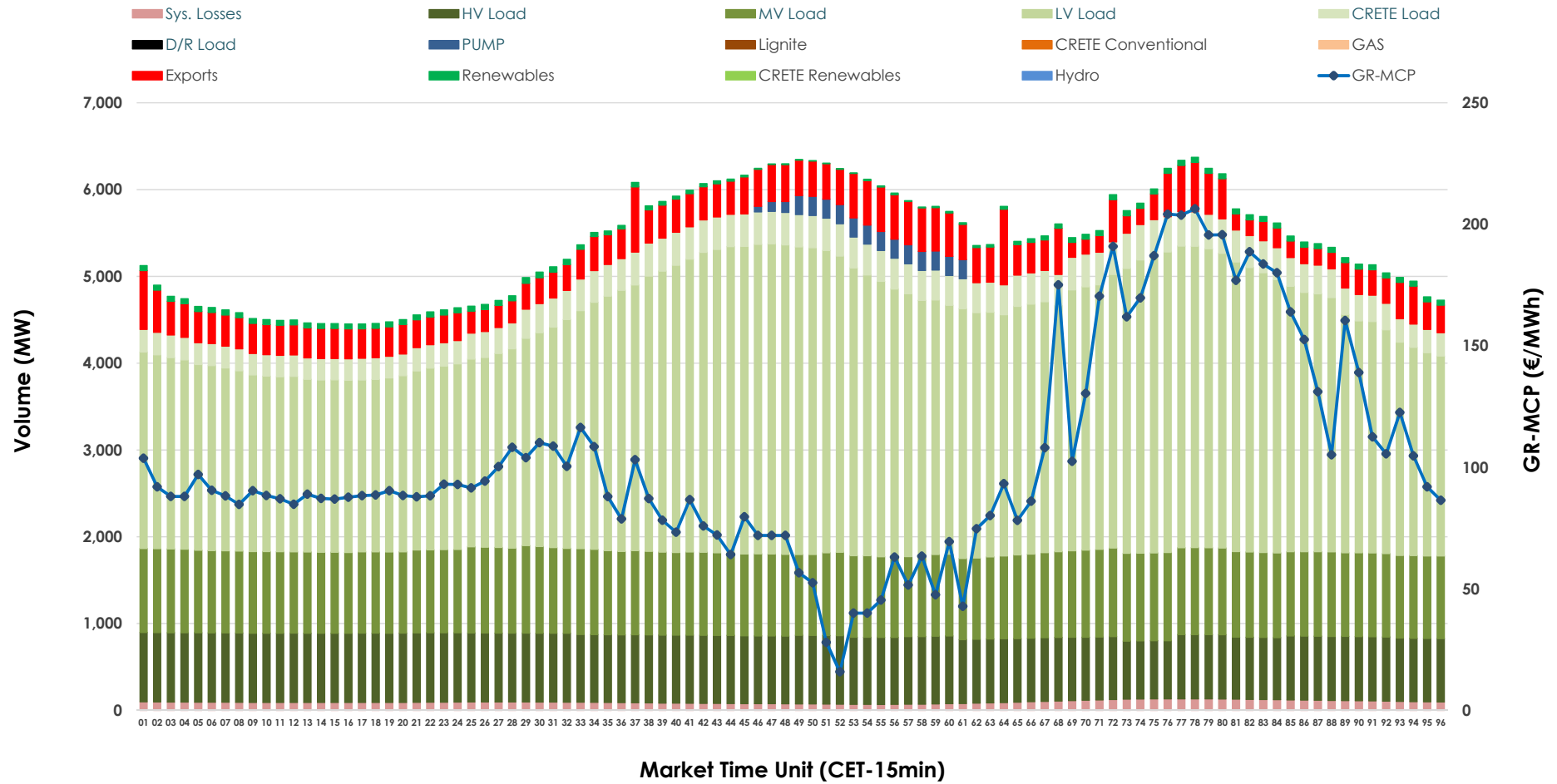


Day-Ahead Market Outlook

19.10.2025 Day-Ahead Market - Sell



19.10.2025 Day-Ahead Market - Buy



GR Bidding Zone Weekly Figures

| Delivery Day | 13.10 | 14.10 | 15.10 | 16.10 | 17.10 | 18.10 | 19.10 |
|-----------------|--------|--------|--------|--------|--------|--------|--------|
| | ↑ 105% | ↓ -3% | ↑ 3% | ↓ -17% | ↓ -4% | ↓ -9% | ↓ -11% |
| Avg.MCP (€/MWh) | 158.35 | 153.56 | 158.21 | 131.30 | 126.61 | 115.64 | 103.48 |
| Max.MCP (€/MWh) | 459.08 | 561.15 | 491.13 | 342.46 | 249.73 | 198.87 | 206.39 |
| Min.MCP (€/MWh) | 0.20 | 0.00 | 0.01 | 76.01 | 86.57 | 43.59 | 15.86 |
| | ↑ 8% | ↑ 3% | → -1% | ↑ 2% | → -1% | ↓ -5% | ↓ -8% |
| Tot.Vol(GWh) | 287.34 | 296.95 | 294.40 | 299.66 | 297.50 | 282.17 | 258.41 |

Trades by Order Type

| Delivery Day | | 13.10 | 14.10 | 15.10 | 16.10 | 17.10 | 18.10 | 19.10 | |
|----------------|-----|---|---------|---------|---------|---------|---------|---------|--------|
| Ord Price Type | | Sell & Buy Trades in (GWh) per Price Type | | | | | | | (%) |
| PPT | (S) | 31.434 | 31.803 | 33.108 | 36.198 | 33.750 | 32.788 | 31.665 | 24.51% |
| HBD | (S) | 57.223 | 59.731 | 55.887 | 60.347 | 56.892 | 55.222 | 50.748 | 39.28% |
| BLK | (S) | 52.255 | 54.473 | 55.807 | 53.119 | 57.980 | 47.735 | 40.187 | 31.10% |
| CPL | (S) | 2.758 | 2.466 | 2.400 | 0.164 | 0.127 | 5.340 | 6.604 | 5.11% |
| PPT | (B) | 15.350 | 15.465 | 16.444 | 16.086 | 15.137 | 15.740 | 14.082 | 10.90% |
| HBD | (B) | 121.458 | 124.679 | 124.771 | 124.904 | 127.384 | 120.593 | 114.159 | 88.35% |
| BLK | (B) | 0.000 | 0.000 | 0.000 | 0.000 | 0.000 | 0.000 | 0.000 | 0.00% |
| CPL | (B) | 6.862 | 8.328 | 5.987 | 8.838 | 6.227 | 4.752 | 0.965 | 0.75% |
| | | Sell & Buy Orders Traded per Price Type | | | | | | | (%) |
| PPT | (S) | 1338 | 1338 | 1352 | 1264 | 1336 | 1313 | 1392 | 34.40% |
| HBD | (S) | 2568 | 2507 | 2641 | 2657 | 2743 | 2623 | 2638 | 65.20% |
| BLK | (S) | 26 | 23 | 20 | 18 | 21 | 24 | 16 | 0.40% |
| PPT | (B) | 2259 | 2274 | 2319 | 2306 | 2253 | 2297 | 2298 | 35.17% |
| HBD | (B) | 3961 | 4076 | 4032 | 4091 | 4160 | 4143 | 4236 | 64.83% |
| BLK | (B) | 0 | 0 | 0 | 0 | 0 | 0 | 0 | 0.00% |

| | |
|------------|-------------------------------|
| MCP | Market Clearing Price (€/MWh) |
| PPT | Priority Price-Taking |
| HBD | Hybrid |
| BLK | Block |
| CPL | Market Coupling Flow |

Trade's Volume Mix

| | | Sell - MWh | Buy - MWh | |
|-------------|---------|------------|-----------|---------|
| Lignite | (0.0%) | 64 | 0 | (0.0%) |
| Crete Conv. | (2.8%) | 3,614 | 0 | (0.0%) |
| Gas | (49.7%) | 64,153 | 0 | (0.0%) |
| Hydro | (3.5%) | 4,486 | 0 | (0.0%) |
| Imports | (8.4%) | 10,806 | | |
| RES | (35.2%) | 45,464 | 1,090 | (0.8%) |
| Crete RES | (0.5%) | 617 | 0 | (0.0%) |
| HV Load | (0.0%) | 0 | 18,382 | (14.2%) |
| MV Load | (0.0%) | 0 | 23,120 | (17.9%) |
| LV Load | (0.0%) | 0 | 66,770 | (51.7%) |
| Crete Load | (0.0%) | 0 | 7,883 | (6.1%) |
| Pumping | (0.0%) | 0 | 791 | (0.6%) |
| Exports | | | 8,842 | (6.8%) |
| Sys.Losses | (0.0%) | 0 | 2,327 | (1.8%) |
| D/R Load | (0.0%) | 0 | 0 | (0.0%) |

