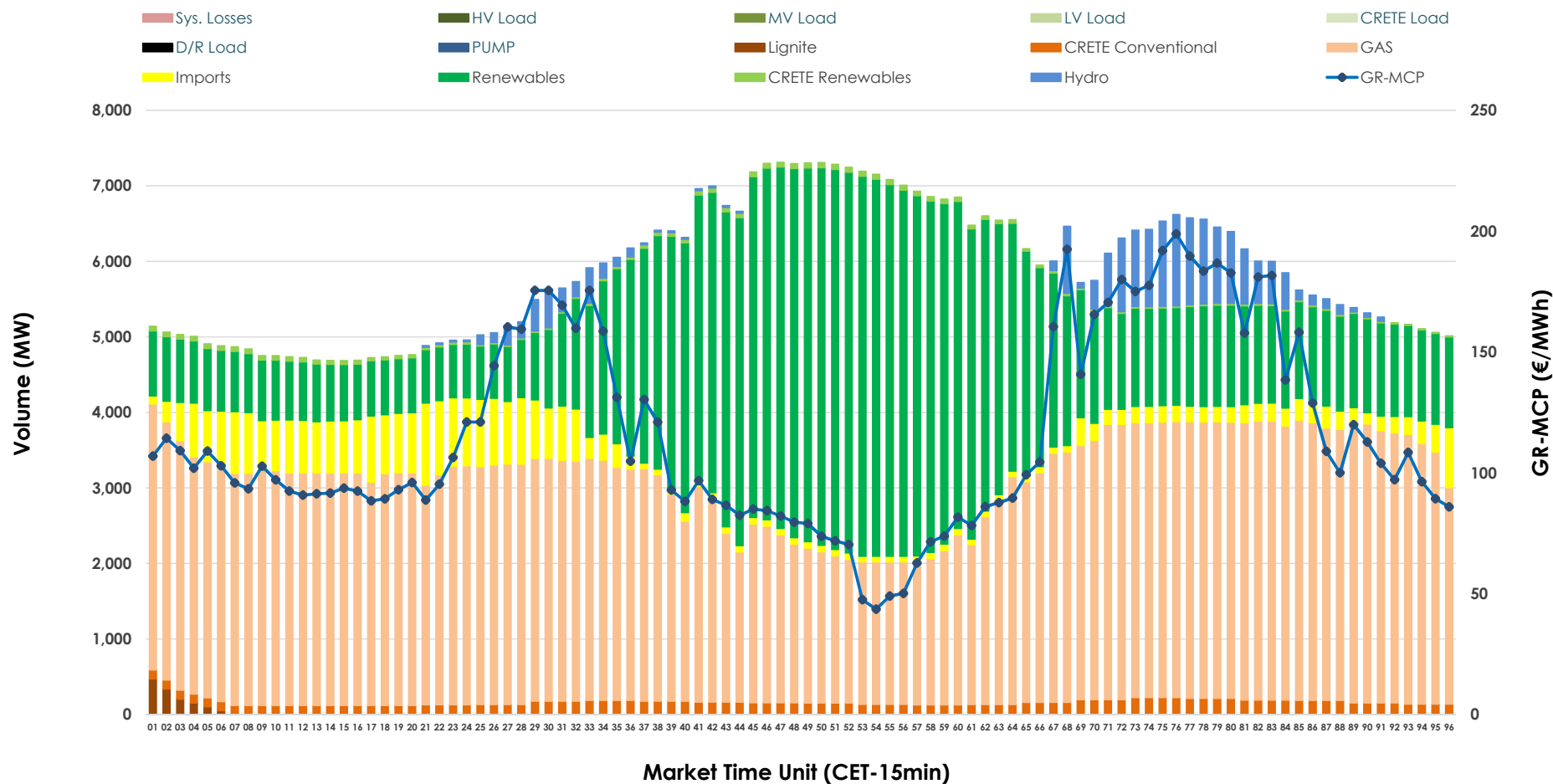


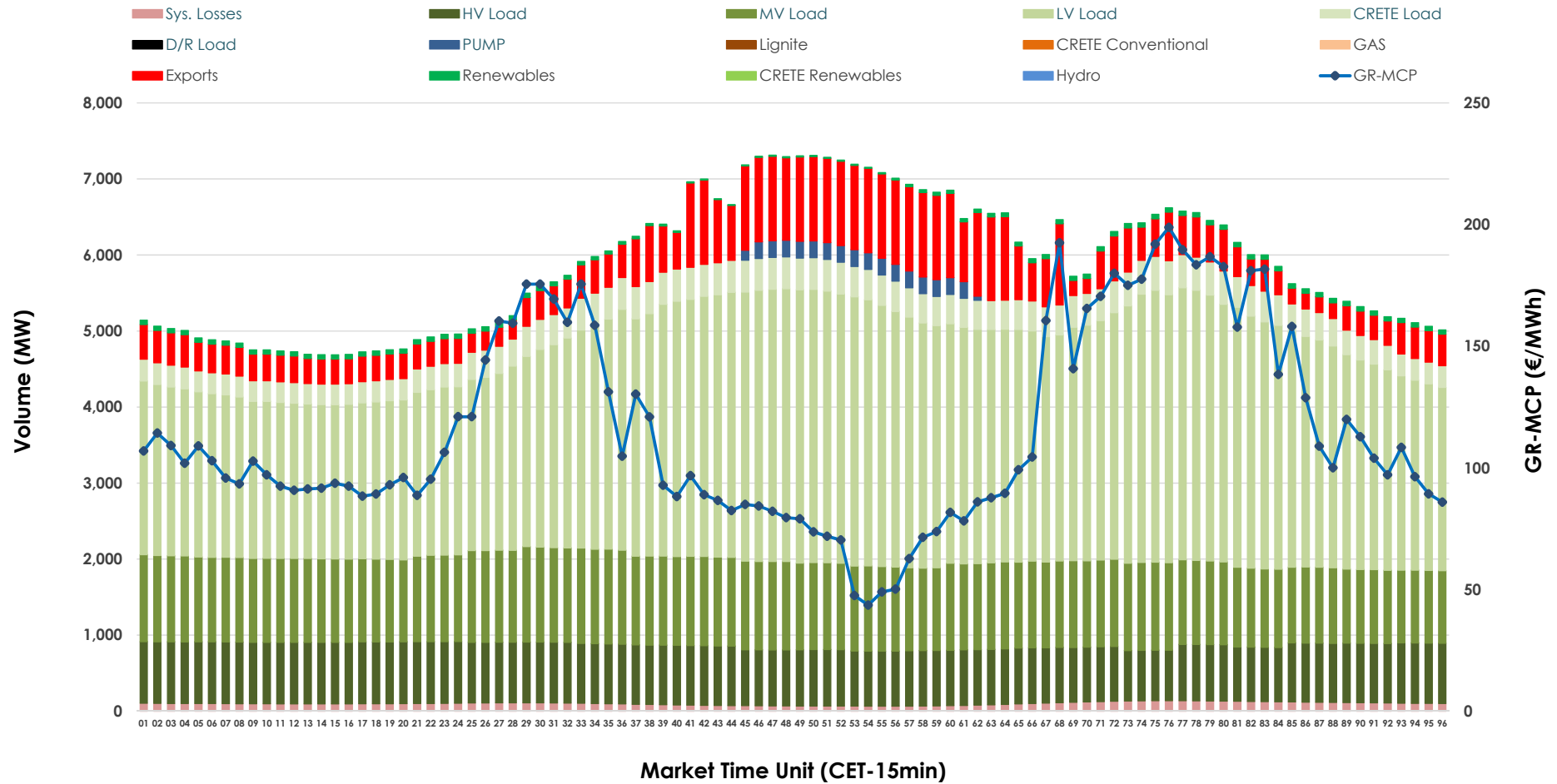


Day-Ahead Market Outlook

18.10.2025 Day-Ahead Market - Sell



18.10.2025 Day-Ahead Market - Buy



GR Bidding Zone Weekly Figures

Delivery Day	12.10	13.10	14.10	15.10	16.10	17.10	18.10
	↗ 7%	↗ 105%	↘ -3%	↗ 3%	↘ -17%	↘ -4%	↘ -9%
Avg.MCP (€/MWh)	77.41	158.35	153.56	158.21	131.30	126.61	115.64
Max.MCP (€/MWh)	219.32	459.08	561.15	491.13	342.46	249.73	198.87
Min.MCP (€/MWh)	-3.81	0.20	0.00	0.01	76.01	86.57	43.59
	↘ -7%	↗ 8%	↗ 3%	↘ -1%	↗ 2%	↘ -1%	↘ -5%
Tot.Vol(GWh)	265.95	287.34	296.95	294.40	299.66	297.50	282.17

Trades by Order Type

Delivery Day		12.10	13.10	14.10	15.10	16.10	17.10	18.10	
Ord Price Type		Sell & Buy Trades in (GWh) per Price Type							(%)
PPT	(S)	44.570	31.434	31.803	33.108	36.198	33.750	32.788	23.24%
HBD	(S)	55.366	57.223	59.731	55.887	60.347	56.892	55.222	39.14%
BLK	(S)	30.246	52.255	54.473	55.807	53.119	57.980	47.735	33.83%
CPL	(S)	2.791	2.758	2.466	2.400	0.164	0.127	5.340	3.78%
PPT	(B)	14.169	15.350	15.465	16.444	16.086	15.137	15.740	11.16%
HBD	(B)	108.813	121.458	124.679	124.771	124.904	127.384	120.593	85.48%
BLK	(B)	0.000	0.000	0.000	0.000	0.000	0.000	0.000	0.00%
CPL	(B)	9.991	6.862	8.328	5.987	8.838	6.227	4.752	3.37%
		Sell & Buy Orders Traded per Price Type							(%)
PPT	(S)	1285	1338	1338	1352	1264	1336	1313	33.16%
HBD	(S)	2070	2568	2507	2641	2657	2743	2623	66.24%
BLK	(S)	15	26	23	20	18	21	24	0.61%
PPT	(B)	2246	2259	2274	2319	2306	2253	2297	35.67%
HBD	(B)	4000	3961	4076	4032	4091	4160	4143	64.33%
BLK	(B)	0	0	0	0	0	0	0	0.00%

MCP	Market Clearing Price (€/MWh)
PPT	Priority Price-Taking
HBD	Hybrid
BLK	Block
CPL	Market Coupling Flow

Trade's Volume Mix

		Sell - MWh	Buy - MWh	
Lignite	(0.2%)	328	0	(0.0%)
Crete Conv.	(2.6%)	3,703	0	(0.0%)
Gas	(51.4%)	72,481	0	(0.0%)
Hydro	(3.2%)	4,526	0	(0.0%)
Imports	(6.1%)	8,618		
RES	(35.7%)	50,431	1,103	(0.8%)
Crete RES	(0.7%)	999	0	(0.0%)
HV Load	(0.0%)	0	18,399	(13.0%)
MV Load	(0.0%)	0	26,876	(19.0%)
LV Load	(0.0%)	0	68,925	(48.9%)
Crete Load	(0.0%)	0	8,775	(6.2%)
Pumping	(0.0%)	0	926	(0.7%)
Exports			13,699	(9.7%)
Sys.Losses	(0.0%)	0	2,382	(1.7%)
D/R Load	(0.0%)	0	0	(0.0%)

