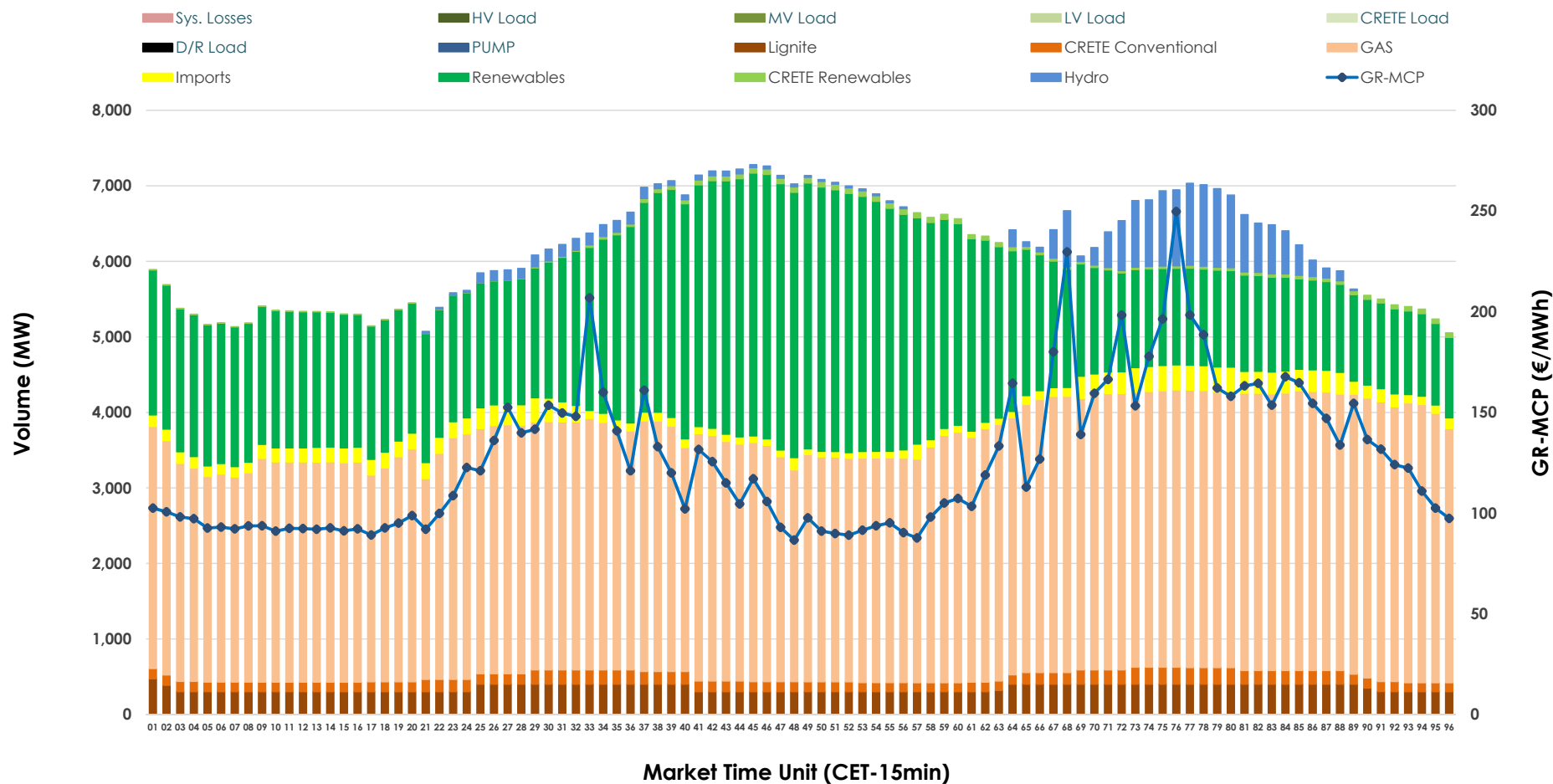


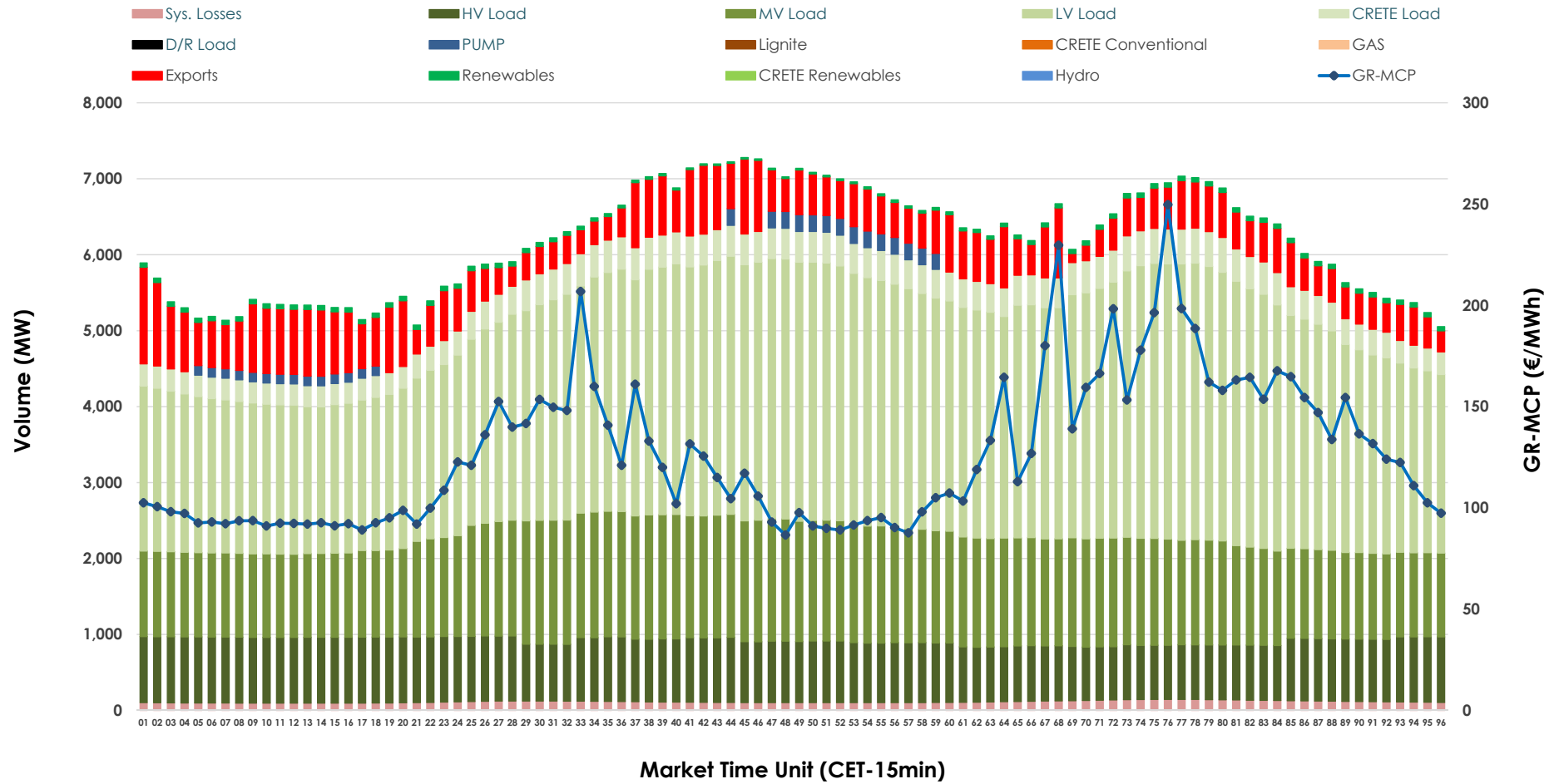


Day-Ahead Market Outlook

17.10.2025 Day-Ahead Market - Sell



17.10.2025 Day-Ahead Market - Buy



GR Bidding Zone Weekly Figures

Delivery Day	11.10	12.10	13.10	14.10	15.10	16.10	17.10
	↓ -41%	↗ 7%	↑ 105%	↘ -3%	↗ 3%	↘ -17%	↘ -4%
Avg.MCP (€/MWh)	72.37	77.41	158.35	153.56	158.21	131.30	126.61
Max.MCP (€/MWh)	153.30	219.32	459.08	561.15	491.13	342.46	249.73
Min.MCP (€/MWh)	-1.00	-3.81	0.20	0.00	0.01	76.01	86.57
	↘ -2%	↘ -7%	↗ 8%	↘ 3%	↘ -1%	↗ 2%	↘ -1%
Tot.Vol(GWh)	287.02	265.95	287.34	296.95	294.40	299.66	297.50

Trades by Order Type

Delivery Day		11.10	12.10	13.10	14.10	15.10	16.10	17.10	
Ord Price Type		Sell & Buy Trades in (GWh) per Price Type							(%)
PPT	(S)	46.708	44.570	31.434	31.803	33.108	36.198	33.750	22.69%
HBD	(S)	60.154	55.366	57.223	59.731	55.887	60.347	56.892	38.25%
BLK	(S)	32.325	30.246	52.255	54.473	55.807	53.119	57.980	38.98%
CPL	(S)	4.322	2.791	2.758	2.466	2.400	0.164	0.127	0.09%
PPT	(B)	14.986	14.169	15.350	15.465	16.444	16.086	15.137	10.18%
HBD	(B)	118.981	108.813	121.458	124.679	124.771	124.904	127.384	85.64%
BLK	(B)	0.000	0.000	0.000	0.000	0.000	0.000	0.000	0.00%
CPL	(B)	9.542	9.991	6.862	8.328	5.987	8.838	6.227	4.19%
		Sell & Buy Orders Traded per Price Type							(%)
PPT	(S)	1413	1285	1338	1338	1352	1264	1336	32.59%
HBD	(S)	2110	2070	2568	2507	2641	2657	2743	66.90%
BLK	(S)	9	15	26	23	20	18	21	0.51%
PPT	(B)	2277	2246	2259	2274	2319	2306	2253	35.13%
HBD	(B)	4135	4000	3961	4076	4032	4091	4160	64.87%
BLK	(B)	0	0	0	0	0	0	0	0.00%

MCP	Market Clearing Price (€/MWh)
PPT	Priority Price-Taking
HBD	Hybrid
BLK	Block
CPL	Market Coupling Flow

Trade's Volume Mix

		Sell - MWh	Buy - MWh	
Lignite	(5.6%)	8,357	0	(0.0%)
Crete Conv.	(2.5%)	3,672	0	(0.0%)
Gas	(52.7%)	78,459	0	(0.0%)
Hydro	(2.9%)	4,295	0	(0.0%)
Imports	(2.9%)	4,378		
RES	(32.7%)	48,692	1,135	(0.8%)
Crete RES	(0.6%)	896	0	(0.0%)
HV Load	(0.0%)	0	19,353	(13.0%)
MV Load	(0.0%)	0	32,887	(22.1%)
LV Load	(0.0%)	0	68,541	(46.1%)
Crete Load	(0.0%)	0	8,895	(6.0%)
Pumping	(0.0%)	0	1,205	(0.8%)
Exports			14,017	(9.4%)
Sys.Losses	(0.0%)	0	2,716	(1.8%)
D/R Load	(0.0%)	0	0	(0.0%)

